

EGER TÖRTÉNELMI VÁOSRÉSZEINEK DEMOGRÁFIAI JELLEMZŐI, KIVÁLASZTOTT MUTATÓK ALAPJÁN

Antal Tóth – Csaba Patkós

Összefoglalás

Eger az Észak-Magyarország régió második legnépesebb települése; központi funkciókkal rendelkező igazgatási, gazdasági, oktatási, egészségügyi, kulturális és egyházi központ. Jól elkülöníthető, jellegzetes településrészekből áll, amelyek demográfiai jellemzői is igen eltérőek. Legnépesebb lakófunkciójú területeinek népességszáma több tízszeresen múlja felül az egyéb funkciójú városrészekét. Az előregedő városok közé tartozik, fiatalosabb korösszetételű északi területei társadalmi szempontból nem homogének, sőt jelentősen különböznek egymástól: magas, illetve alacsony státuszú lakosságot magas arányban koncentráló részeket egyaránt találunk itt. Egerben az országos átlagnál magasabb az iskolázottsági szint, viszont ebből a szempontból is nagymértékű területi differenciák figyelhetők meg (Rác Hóstya, Felnémet, Felsőváros versus Almagyardomb, belváros).

Kulcsszavak: *Eger, városrészek, demográfia, népességszám, korösszetétel, iskolai végzettség*

THE DEMOGRAPHIC CHARACTERISTICS OF THE HISTORIC DISTRICTS OF EGER ACCORDING TO SELECTED INDEXES

Abstract

Eger is the second largest settlement of the North Hungarian Region, it has central functions in administration, economy, education healthcare, culture and religion. It consists of well-separable, typical districts having special demographic functions as well. The number of inhabitants in its most populous residential quarters outperforms ten times that of the districts with other functions. Eger is an ageing town. Its Northern district has the youngest age structure, but its society is not homogenous as there are people of the higher and the lower social strata as well. Although the level of education in the town is higher than that of the national average, there are huge spatial differences in it. (Rác Hóstya, Felnémet, Felsőváros v.s. Almagyardomb, Belváros).

Keywords: *Eger, districts, demography, population number, age structure, highest education*

Introduction

Eger is a county town with 53 thousand inhabitants in the North Hungarian Region, Heves County and the District of Eger. It is the seat of the county and the district, the second biggest settlement of the region with a branch of central functions in administration, economy, education healthcare, culture and religion.

The town has deep historic roots as it is inhabited since the Neolith Ages. It became an archbishop seat in 1009, in the first period of the reign of St. Stephen (Csapó et al. 2019, [3, 90. p.]). One of the most urbanized settlements, based on the medieval town structure its typical districts were evolved from the 17th century till now [3, pp. 43-44.]. The main objective of our study is to research the demographic characters based on the data of the National Census of 2011. A special emphasis was put on the differences in the number of inhabitants, age structure and education.

Material and methods

At the first stage of our research the main challenge was to fix the borders of the historic districts. A digital map containing the borders of the districts was acquired from the Municipality of Eger ([2, 10. p.]). Small corrections were made according to settlement morphology point of view. The next step was the spatial adjustment of the historical districts and the regions of census with the assistance of Hungarian Central Statistical Office (HCSO). Finally 20 districts were determined (*Figure 1*).

During the project 16 data of the 2011 national census were bought from HCSO. In our recent study the processing of some relevant indexes (population number, the ratio of 0-14 years old and 60-x years old people, the ratio of people with elementary education in the active population (15-59 years old) additionally the ratio of graduated people in the 25+ years old population) was done in order to reveal and analyse the basic demographic trends of the districts.

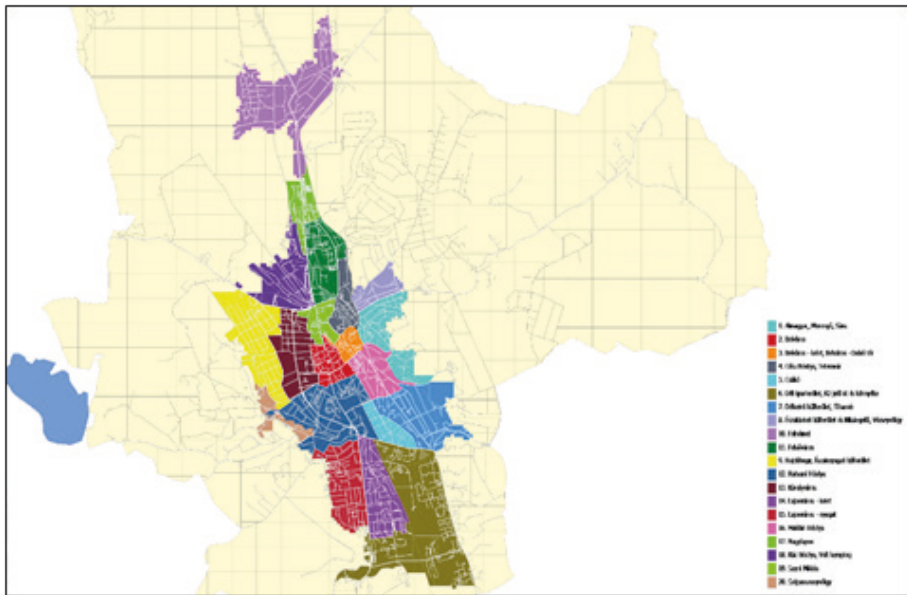


Figure 1: The 20 districts of Eger

Source: Eszterházy Károly University INNOREGIO Knowledge Centre – Hungarian Central Statistical Office – Municipality of Eger
(Authors' edition, technical editor: Balázs Magyar)

Results

The population number of Eger has reached its peak since 1990 in 1994 with almost 64 thousand inhabitants. In the following decades the decline was almost continuous, consequently there were 52898 inhabitants in 2019. The shrinking tendency is similar to that of the country, but the ratio of decline is bigger than the national average: between 1990–2019 the ratio is -14.5% that is 8.7% bigger than the national average.

The distribution of population among the 20 districts is quite uneven (*Figure 2*). According to the data of the 2011 census there were 1500–4500 inhabitants in half of the districts. At the same time in the biggest housing estate of Eger – built in the 1970s–1980s – the Felsőváros (the former „Csebokszári” Housing Estate) the number of inhabitants exceeds 10 thousand (almost one fifth of the population (17.7%) lives here), in the Hatvani „hóstya” (district) and Felnémet area 5–5 thousand people were living. (In certain areas of Eger founded in the 18th century the „hóstya” phrase of German origin is used meaning an uptown zone (Csapó et al. 2019, [4]).

In the Szépasszonyvölgy zone there are only 146, in the Southern Industrial Zone and around the K2 road 266 and in the Eastern Belváros (City Zone) and Dobó Square 454 inhabitants. In case of the last three areas the dwelling function is of secondary importance beyond wine making, wine touristic, industrial and administrative, cultural, education and other touristic features.

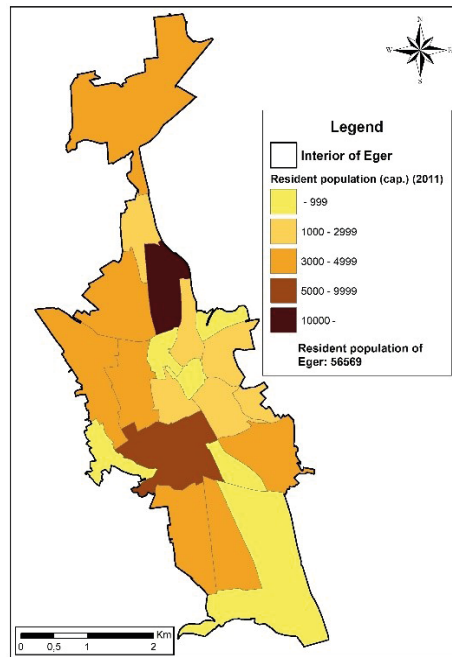


Figure 2: The number of inhabitants in the 20 districts of Eger (2011) (capita)

Source: HCSO (own edition, technical editor: Balázs Magyar)

Eger at the beginning of the 21st century belongs to the ageing towns because of the lower birth rates and the growth of the life expectancies. The ration of children and te youth is decreasing. The disadvantageous situation of Eger in case of ageing is shown by the ratio of the age group 0-14. It was 13.2% during the last census which is less than the data of the District of Eger (14.1), Heves County (14.7), the North Hungarian Region (15.6%) and the national average (14.6%).

There are huge differences between the districts of Eger concerning this index too (Figure 3). In 14 districts the ratio of the 0-14 years population was between 10.3-13.7% with a smaller deviation in 2011. In the Southern Industrial Zone and the surrounding of the K2 road (4.1), in the Eastern side of the a Belváros (City Zone) and Dobó Square (7.9), and in the Maklár Hóstya (9.3) it did not reach 10%. At the same time in the area of the Rác Hóstya and the ex-camping zone (21.6%), in Felnémet (17.5) and in the North Eastern Periphery and Bikalegelő additionally

in the Vécsey Valley (14.4) the value is much higher than the the average of the town. The zones with younger age structure are different from each other from a social point of view: beyond the zones of self-contained, terraced houses (e.g. Vécsey-völgy, Felnémet-Pásztorvölgy) and subdivisions segregated areas with disadvantaged, mainly Roma population can be found here (mainly in the Rác Hóstya District, the so-called Szala-shore and the Béke Yard in Felnémet) ([2, pp. 55-56.], [3, 105. p.]).

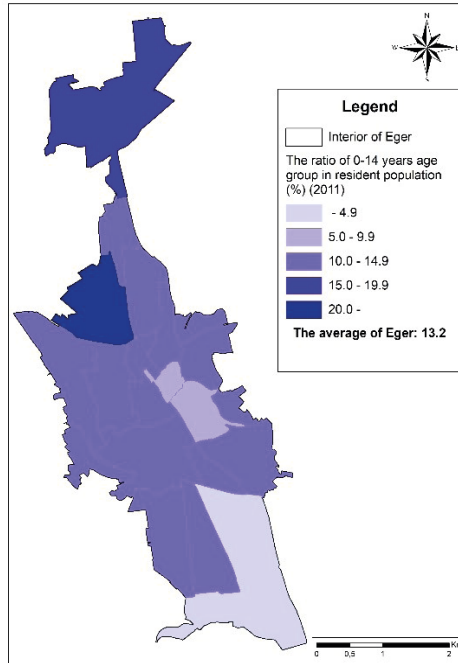


Figure 3: The ratio of the 0-14 years old population in the 20 districts of Eger (2011) (%)
 Source: HCSO (own edition, technical editor: Balázs Magyar)

Concerning the spatial distribution of 60+ population the situation is reverse: in the Almagyar, Merengő, Sác (13.0) and the Rác Hóstya, former camping (13.8) district their ratio is less than half of the average of th town (23.7%). Among these districts, moreover inside these areas population with diverging social strata can be found. The population of four historic districts (Belváros, Hajdúhegy és Northwestern Periphery, Maklár Hóstya, Csákó) is the oldest, the ratio of 60+ people was almost one third of the inhabitants.

In the age of knowledge-based society and economy the learning capacities, competences, skills and talents of the potential workforce is of high importance. One relevant element of this is the level of education as its low level decreases the chances to find proper job (because of the lack of expertise and needed practice too).

In the active age generation (15-59 years) the ratio of people with only elementary school qualification is 8.4%. In the Southern Industrial Zone and the surrounding of the K2 road, the Almagyar, Merengő, Sánc Districts their ratio is under 2%, in Felnémet (14.2) and specifically in the Rác Hóstya and the ex-camping area (22.4) is well above the average of the town.

As a consequence of the appreciation of human capital it is even more important to examine the territorial differences of the population with higher graduation. Eger is a center of schools and education with two universities. It may explain the fact that the ratio of graduated people among the 25+ population is 10 percent higher (28.9) than the national average (19%). Spatial differences are high in case of this index: in the Belváros, the Eastern side of the a Belváros (City Zone) and Dobó Square and in the Almagyar, Merengő, Sánc districts (45.5) the ratio of graduated people was above 40% in the 25+ age population (*Figure 4*). At the same time in the Felsőváros – the most populated district – it was 18.1 and in the Rác Hóstya ex-camping zone it was only similar to the national average (20.3).

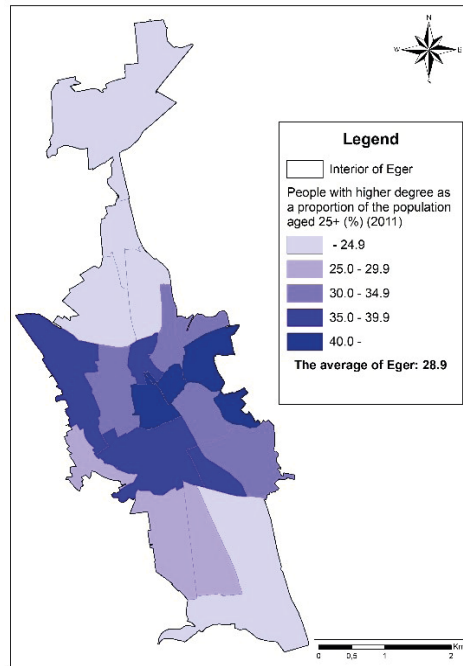


Figure 4: The ratio of people with higher grade in the 25+ population in the 20 districts of Eger (2011) (%)

Source: HCSO (own edition, technical editor: Balázs Magyar)

Conclusions

As for demographics Eger can be stated a disadvantageous (but not yet critical) town because of population decline and ageing. According to the trends and the empirical researches of the last years the continuation (in some cases the strengthening) of the negative tendencies can be forecasted.

The town consists of clearly demarked districts, being quite different from a demographic (population number, age structure, education) point of view.

Our socio-geographic research results can be used in practice too during decision making in: city development, site selection or choice of residence.

Acknowledgements

This work was supported by the grant EFOP-3.6.1-16-2016-00001 (“Complex improvement of research capacities and services at Eszterházy Károly University”).

References

- [1.] Csapó T. - Lenner T. - Kovács G. (2019): Eger történeti földrajza és településmorfológiája. Településföldrajzi Tanulmányok, VIII(2), pp. 16-34.
- [2.] Eger Megyei Jogú Város Integrált Településfejlesztési Stratégia 2014-2020 (2014). Available at: https://eger.hu/public/uploads/integralt-telepulesfejlesztési-strategia-2014-2020_592fcc35869b2.pdf (Accessed: 19 September 2019)
- [3.] Eger Megyei Jogú Város Integrált Városfejlesztési Stratégiája (2010). (Accessed: 19 September 2019) Available at:
- [4.] https://www.eger.hu/public/uploads/II_fejezet.pdf https://www.eger.hu/public/uploads/III_1_Belvaros.pdf
- [5.] https://www.eger.hu/public/uploads/III_2_Eszak.pdf
- [6.] Mi az a hóstya? Available at: <https://m.nyest.hu/hirek/mi-az-a-hostya> (Accessed: 23 September 2019)

Authors**Antal Tóth PhD**

Associate professor, vice dean
Eszterházy Károly University
Faculty of Natural Sciences
Institute of Geographical and Environmental Science
toth.antal@uni-eszterhazy.hu

Csaba Patkós PhD

Associate professor, director of institute
Eszterházy Károly University
Faculty of Natural Sciences
Institute of Geographical and Environmental Science
patkos.csaba@uni-eszterhazy.hu