

**Notes on longhorn beetles of Lebanon
(Coleoptera: Cerambycidae)**

Tamás NÉMETH^{1*}, Kálmán SZÉKELY², Attila KOTÁN³, András MÁRKUS⁴, Wael YAMMINE⁵,
Challita TANIOS⁶ & Nabil NEMER^{7**}

¹ Hungarian Natural History Museum, Department of Zoology,

H-1088 Budapest, Baross u.13, Hungary. E-mail: nemeth.tamas@nhmus.hu

² H-1013 Budapest, Attila út 29, Hungary. E-mail: szekelykalman@gmail.com

³ H-2120 Dunakeszi, Ábrahám Pál u.48/b, Hungary. E-mail: helladia@gmail.com

⁴ H-5700 Gyula, Gárdonyi u. 16/B, Hungary. E-mail: andras.markus@gmail.com

⁵ Department of Plant Protection, Faculty of Agricultural & Veterinary Sciences,
Lebanese University, Dekwaneh, Beirut, Lebanon. E-mail: waeljeanyammine@gmail.com

⁶ Tannourine Cedars Forest Nature Reserve, Tannourine, Batroun, Lebanon.

E-mail: challitah.tanios@gmail.com

⁷ Department of Agriculture and Food Engineering, Holy Spirit University of Kaslik,

P.O.Box 446, Jounieh, Lebanon. E-mail: nabilnemer@usek.edu.lb

Abstract – First records of four longhorn beetles to the fauna of Lebanon with list of the species collected by the members of the Hungarian Natural History Museum and cooperating partners in Lebanon between 2015 and 2018. With 42 figures.

Key words – biodiversity, faunistic, Middle East, new record, life-history

INTRODUCTION

The cedar forests in Lebanon are mainly concentrated in the north of the country. *Cedrus libani* A. Rich. or the cedar of Lebanon is among the species listed as Vulnerable (VU) in the IUCN Red List. Cedar areas in Lebanon are confined to twelve surviving stands on the western slope of the Mount Lebanon chain at altitudes ranging from 1400 to 2000 m, facing the Mediterranean Sea, where high humidity provided by cloud and fog compensates the evaporation of the hot and dry summer months. Most of these cedar forests are fairly pure cedar stands including sporadic broadleaved tree species such as wild apple

*,** Corresponding authors.

(*Malus trilobata* (Labillardière) Schneider), cedar oak (*Quercus cedrorum* Kotschy) and Brant's oak (*Quercus brantii* Lindley) (SATTOUT & NEMER 2008).

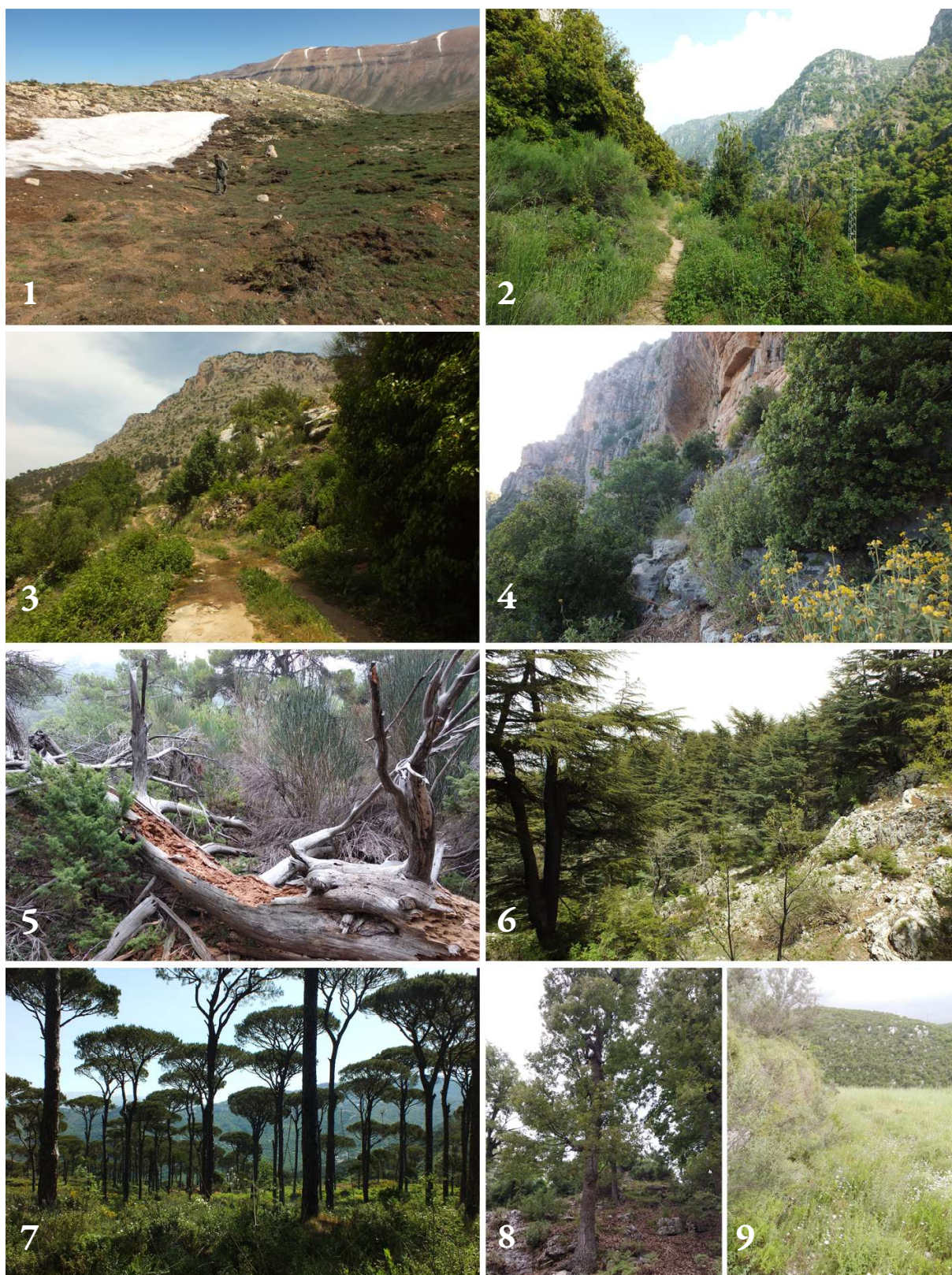
The cooperation of the Hungarian Natural History Museum, Budapest with the Holy Spirit University of Kaslik, Lebanon and The Committee of Cedar Forest Friends, Bcharre, Lebanon was established in 2015 and led to systematic collecting trips into Northern Lebanon in May 2015, June 2016, May 2017, and July and August 2018. During these trips, the collectors visited different habitat types (Figs 1–9), and collected many species of various beetle families including Cerambycidae. During the identification of the material, we found four species new for the fauna of Lebanon. Here we list the species we collected, complemented with their locality data.

The Cerambycidae fauna of Lebanon is well-known. According to the latest publications (SAMA *et al.* 2010, COCQUEMPOT *et al.* 2016) 125 species have been recorded from the country. *Pedostrangalia riccardoi carmelita* Sama, 1996 and *Phymatodes testaceus* (Linnaeus, 1758) were published recently as new for the country (MÁRKUS & NÉMETH 2016), and *Alosterna libani* Márkus *et* Németh, 2016, *Cortodera colchica libanensis* Danilevsky, 2017 and *Cortodera orientalis nigripecta* Kasatkin, 2019 were described from Lebanon (MÁRKUS & NÉMETH 2016, DANILEVSKY & NÉMETH 2017, KASATKIN 2019). Here we add the following species to the list: *Anaglyptus mysticus* (Linnaeus, 1758) (Ehden), *Icosium tomentosum atticum* Ganglbauer, 1882 (Bcharre), *Leioderes kollari* Redtenbacher, 1849 (Ehden) and *Oxypleurus nodieri* Mulsant, 1839 (Arsoun).

MATERIAL AND METHODS

Classification follows DANILEVSKY (2019). Tribes are listed alphabetically under subfamilies, species are also listed alphabetically under tribes. Subgenera are mentioned only under the genus *Phytoecia*. The voucher specimens are deposited in the Coleoptera Collection of the Hungarian Natural History Museum, and in the private collections of Attila Kotán (Budapest), András Márkus (Gyula), Nabil Nemer (Tannourine) and Kálmán Székely (Budapest).

Abbreviations of collectors – AK = Attila Kotán, AM = András Márkus, CT = Challita Tanios, CTK = Charbel Tawk, HM = Hannah Mikhael, MB = Mira Boutsany, MR = Martine Rehayem, NN = Nabil Nemer, OA = Oscar Akiki, PN = Petra Nemes, SK = Staffan Kyrk, TN = Tamás Németh, WY = Wael Yammine.



Figs 1–9. Collecting sites: 1 = Bcharre env., 4 km SE Ariz, 2 = Bcharre env., Quadisha Valley, 3 = Tannourine env., 2 km N Harissa, Fuwar, stream valley, 4 = Tannourine El Tahta, 5 = Ehden, Horsh Ehden Natural Reserve, 6 = Tannourine env., 2 km N Harissa, Tannourine Cedars Nat. Reserve, 7 = Arsoun, 8 = Fnaidek, 9 = Kfar Hay, Mar Youanna Maroun (photos by Tamás Németh)

LIST OF CERAMBYCIDAE COLLECTED DURING
THE LEBANESE TRIPS**Subfamily Prioninae Latreille, 1802**

Tribe Aegosomatini J. Thomson, 1861

Aegosoma scabricorne (Scopoli, 1763)

Material examined – Northern gov., Bcharre env., Quadisha Valley, 34°14'57"N, 35°58'34"E, 970 m, *ex pupa* from *Juglans*, 22.VI.2016, MB, AK, PN, TN, WY; same but hand collected from *Juglans*, 28.VII.2018, PN, TN, WY; Bcharre, suburb, 34°15'9"N, 36°0'33"E, 31.VII.2018, PN, TN, WY.

Tribe Ergatini Fairmaire, 1864

Callergates gaillardoti (Chevrolat, 1854)

(Fig. 10)

Material examined – Northern gov., Ehden, Horsh Ehden Natural Reserve, from rotten *Pinus* log, 34°18'55"N, 35°58'58"E, 4.VIII.2018, PN, TN; 2 km N Harissa, Tannourine Cedars Nat. Reserve, hand collected, 34°12'34"N, 35°55'45"E, 1750 m, VII.2018, CT.

Tribe Macrotomini J. Thomson, 1861

Prinobius myardi atropos (Chevrolat, 1854)

Material examined – Northern gov., Bcharre, Quadisha valley, at light, VII.2018, CTK.

Subfamily Lepturinae Latreille, 1802

Tribe Lepturini Latreille, 1802

Alosterna libani Márkus et Németh, 2016

Material examined – Northern gov., Bcharre env., 1 km E Ariz, Horsh Arz el-Rab, ancient *Cedrus* forest, swept & hand collected, 34°14'33"N, 36°2'59"E, 1900 m, 20.V.2015, AM, TN; same but hand collected at night 27.V.2015, MB, AM, TN, MR (MÁRKUS & NÉMETH 2016).

Grammoptera baudii pistacivora Sama, 1996

Material examined – Northern gov., Bcharre env., Quadisha Valley, swept & hand collected, 34°14'57"N, 35°58'34"E, 970 m, 27.V.2015, MB, AM, TN, MR.

Pedostrangalia riccardoi carmelita Sama, 1996

Material examined – Northern gov., Bcharre env., Quadisha Valley, swept & hand collected, 34°14'57"N, 35°58'34" E, 970 m, 27.V.2015, MB, AM, TN, MR; Bcharre env., 1 km E Ariz, Horsh Arz el-Rab, ancient *Cedrus* forest, swept & hand collected, 34°14'33"N, 36°2'59"E, 1900 m, 20.VI.2016, MB, AK, PN, TN; Tannourine env., 2 km N Harissa, Fuwar, stream valley, swept & beaten, 34°12'22"N, 35°55'17"E, 1460 m, 17.VI.2016, AK, PN, TN (MÁRKUS & NÉMETH 2016); Ehden, Horsh Ehden Natural Reserve, swept & hand collected, 34°18'33"N, 35°59'14"E, 1525 m, 19.VI.2016, AK, PN, TN.

Paracorymbia benjamini ehdenensis Sama et Rapuzzi, 2000

Material examined – Northern gov., Ehden, Horsh Ehden Natural Reserve, swept & hand collected, 34°18'33"N, 35°59'14"E, 1525 m, 19.VI.2016, AK, PN, TN.

Pseudovadonia livida setosa Danilevsky, 2013

Material examined – Northern gov., Tannourine env., 2 km N Harissa, Fuwar, stream valley, swept & hand collected, 34°12'22"N, 35°55'17"E, 1460 m, 27.VI.2016, AK, PN, TN.

Stenurella bifasciata nigrosuturalis (Reitter, 1895)

Material examined – South gov., Saidoun, 2.VI.2018, WY; Mount Lebanon Range, 5 km NW Nahr Ibrahim, Khdayra, riverside, swept and hand collected, 34°5.112'N, 35°41.602'E, 21.VI.2016, MB, AK, PN, TN, WY.

Stictoleptura cordigera cordigera (Fuesslins, 1775)

Material examined – South gov., Saidoun, 2. & 10.VI.2018, WY; Northern gov., 2 km N Harissa, Fuwar, stream valley, swept & beaten, 34°12'22"N, 35°55'17"E, 1460 m, 17.VI.2016, AK, PN, TN; Bcharre env., Quadisha Valley, swept & hand collected, 34°14'57"N, 35°58'34"E, 970 m, 23.VI.2016, AK, TN, WY.

Tribe Rhagiini Kirby, 1837
Cortodera colchica libanensis Danilevsky, 2017

Material examined – Northern gov., Bcharre env., 4 km E Ariz, 34°14.645'N, 36°5.166'E, 2830 m, 24.VI.2016, MB, AK, PN, TN, MR, WY; Tannourine, 30.IV.2016, NN; Tannourine env., 2 km N Harissa, Tannourine Cedars Nat. Reserve, 34°12'28.75"N, 35°56'5.01"E, 1802 m, from *Centaurea*, 11.V.2017, PN (DANILEVSKY & NÉMETH 2017).

Subfamily Spondylidinae Audinet-Serville, 1832

Tribe Asemini J. Thomson, 1861

Arhopalus ferus Mulsant, 1839

(Fig. 11)

Material examined – Northern gov., Bcharre env., 1 km E Ariz, Horsh Arz el-Rab, ancient *Cedrus* forest, *ex* larva from rotten *Cedrus* log, 34°14'33"N, 36°2'59"E, 1900 m, 20.VI.2016, AK, PN, TN.

Cephalocrius syriacus (Reitter, 1895)

Material examined – Mount Lebanon Range, Arsoun, *Pinus* forest, from *Tomicus* pheromone trap, 33°51'8.03"N, 35°41'44.36"E, X.2016, NN, same but reared from *Pinus*, 7.V.–15.VIII.2017, AK, PN, TN.

Tribe Saphanini Gistel, 1848

Oxypleurus nodieri Mulsant, 1839

Material examined – Mount Lebanon Range, Arsoun, *Pinus* forest, from *Tomicus* pheromone trap, 33°51'8.03"N, 35°41'44.36"E, X.2016, NN; same but 7.V.2017, AK, PN, TN.

Remark – First record for Lebanon.

Subfamily Cerambycinae Latreille, 1802

Tribe Achrysonini Lacordaire, 1868

Icosium tomentosum atticum Ganglbauer, 1882

(Fig. 12)

Material examined – Northern gov., Bcharre env., Quadisha Valley, reared from *Thuja*, 34°14'57"N, 35°58'34"E, 970 m, 5.V.2017, AK, PN, TN, CT.

Remark – First record for Lebanon.

Tribe Anaglyptini Lacordaire, 1868
Anaglyptus mysticus (Linnaeus, 1758)
(Fig. 13)

Material examined – Northern gov., Ehden, Horsh Ehden Natural Reserve, upper gate, mixed forest, from *Acer*, 34°18'15.38"N, 35°59'2.66"E, 1600 m, 4.V.2017, MB, AK, PN, TN, CT.

Remark – First record for Lebanon.

Tribe Brachypteromatini Sama, 2008
Dolocerus holtzi (Pic, 1905)

Material examined – Northern gov., Bcharre env., Quadisha Valley, swept & beaten, 34°14'57"N, 35°58'34"E, 970 m, 5.V.2017, AK, PN, TN, CT.

Tribe Callichromatini Swainson et Shuckard, 1840
Aromia moschata ambrosiaca (Steven, 1809)

Material examined – Northern gov., Northern gov., Bcharre, suburb, hand collected, 34°15'9"N, 36°0'33"E, V–VII.2018, CTK; Bcharre, 11.VI.2015. *ex larva* from *Salix* sp., AM, TN.

Tribe Callidiini Kirby, 1837
Callidium libani Sama et Rapuzzi, 2002
(Fig. 14)

Material examined – Northern gov., Northern gov., Bcharre env., 1 km E Ariz, Horsh Arz el-Rab, ancient *Cedrus* forest, from *Cedrus* branches, 34°14'33"N, 36°2'59"E, 1900 m, 20.V.2015, AM, TN; same but reared from *Cedrus*, 9.–23.V.2017, AK, PN, TN, CT; Ehden, Horsh Ehden Natural Reserve, reared from *Cedrus* branch, 34°18'25"N, 35°59'6"E, 2.VIII.2018–15.II.2019, PN, TN.

Leioderes kollari Redtenbacher, 1849
(Fig. 15)

Material examined – Northern gov., Ehden, Horsh Ehden Natural Reserve, upper gate, mixed forest, reared from *Acer*, 34°18'15.38"N, 35°59'2.66"E, 1600 m, 4.V.2017, MB, AK, PN, TN, CT.

Remark – First record for Lebanon.

Phymatodes testaceus (Linnaeus, 1758)

Material examined – Northern gov., Bcharre env., 1 km E Ariz, Horsh Arz el-Rab, ancient *Cedrus* forest, pupae from beneath bark of *Quercus cedrorum*, 34°14'33"N, 36°2'59"E, 1900 m, 30.V.–VI.7.2015, AM, TN; Tannourine env., 2 km N Harissa, Tannourine Cedars Nat. Reserve, 34°12'34"N, 35°55'45"E, 1750 m, 23.V.2015, adult from beneath bark of *Q. cedrorum*, AM; same but emerged from stacked oak logs, 16. & 26.VI.2016, AK, PN, TN; LEBANON, Ehden, Horsh Ehden Natural Reserve, adults and pupae from beneath bark of *Q. cedrorum*, 34°18'33"N, 35°59'14"E, 1525 m, 21.V.–VI.7.2015, MB, AM, TN (MÁRKUS & NÉMETH 2016).

Phymatodes lividus (Rossi, 1794)

(Fig. 16)

Material examined – Northern gov., Ehden, Horsh Ehden Natural Reserve, swept & hand collected, 34°18'33"N, 35°59'14"E, 1525 m, 25.V.2015, III.14–V.13.2016. *ex larva Quercus* sp., MB, AM, TN; Tannourine El Tahta, macchia, reared from dry *Quercus* branch, 34°12'46.84"N, 35°52'26.40"E, 960 m, 3.V.2017, TN; same but netted from canopy, 10.V.2017, AK, TN, CT; Akkar gov., Fnaidek, *Quercus* forest, reared from *Quercus* branch, 34°28'19"N, 36°12'28"E, 3.VIII.2018, PN, TN, CT.

Phymatodes rufipes syriacus (Pic, 1891)

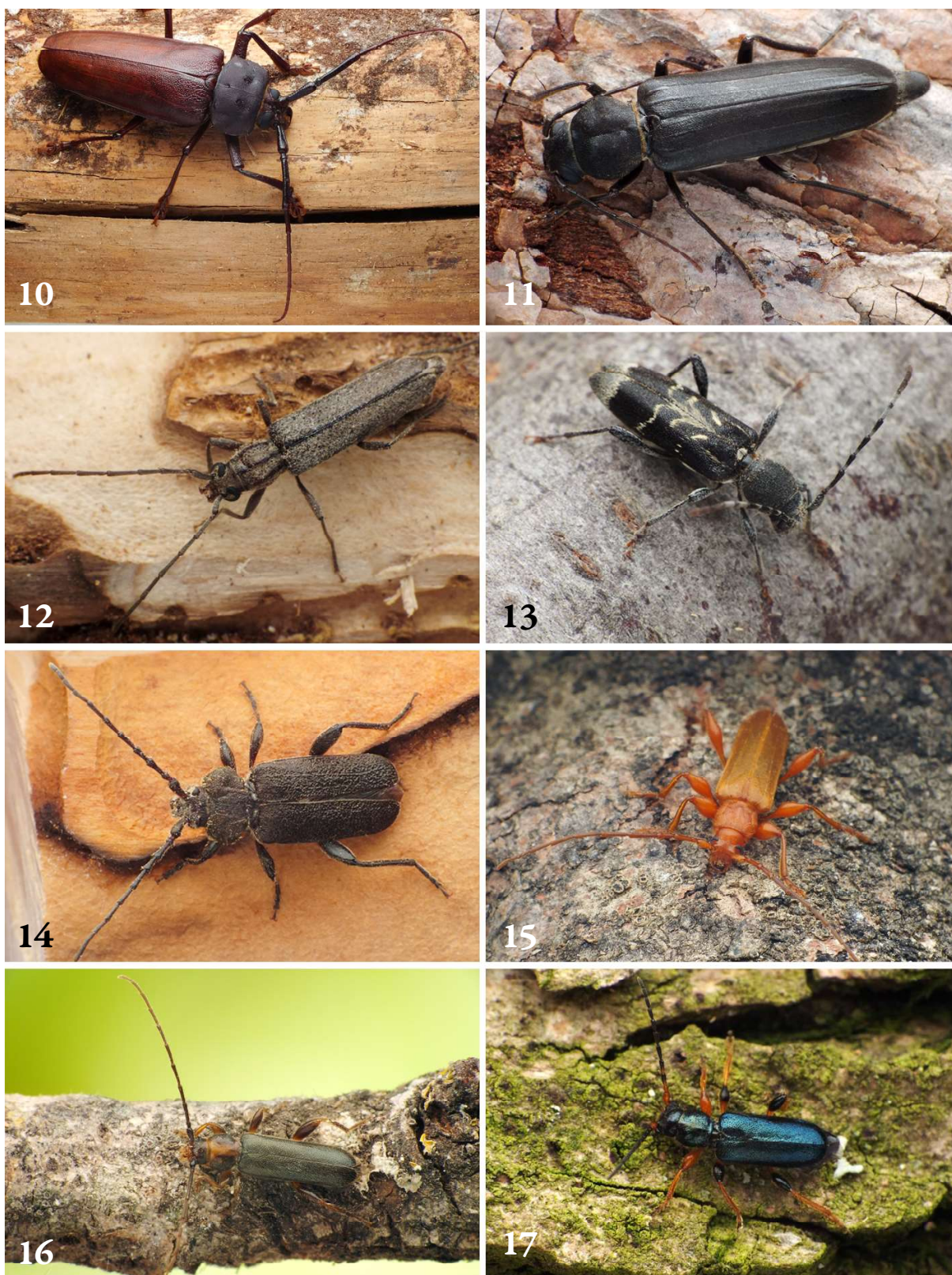
(Fig. 17)

Material examined – Northern gov., 7 km NE Batroun, Moghr Al Ahoual, macchia, *ex larva* from *Quercus*, 34°17.104'N, 35°52.771'E, 715 m, 18.VI.2016–II.2017, AK, PN, TN; Tannourine env., 2 km N Harissa, Tannourine Cedars Nat. Reserve, 34°12'34"N, 35°55'45"E, 1750 m, 30.V.2015 *ex Prunus* sp., AM; Bcharre env., 1 km E Ariz, Horsh Arz el-Rab, ancient *Cedrus* forest, swept & hand collected, 34°14'33"N, 36°2'59"E, 1900 m, 1.VI.2015. *ex Quercus cedrorum*, AM, TN.

Ropalopus ledereri wittmeri Demelt, 1970

(Fig. 18)

Material examined – Akkar gov., Fnaidek, *Quercus* forest, reared from *Quercus* branch, 34°28'19"N, 36°12'28"E, 3.VIII.2018–24.II.2019, PN, TN, CT.



Figs 10–17. Live longhorn individuals: 10 = *Callergates gaillardoti* (Chevrolat, 1854), 11 = *Arhopalus ferus* Mulsant, 1839, 12 = *Icosium tomentosum atticum* Ganglbauer, 1882, 13 = *Anaglyptus mysticus* (Linnaeus, 1758), 14 = *Callidium libani* Sama et Rapuzzi, 2002, 15 = *Leioderes kollari* Redtenbacher, 1849, 16 = *Phymatodes lividus* (Rossi, 1794), 17 = *Ph. rufipes syriacus* (Pic, 1891). Not to scale (photos by Tamás Németh)

Tribe Cerambycini Latreille, 1802
Cerambyx dux (Faldermann, 1837)

Material examined – Mount Lebanon, Beit Chabab, 1.VI.2016 & 17.VII.2018, WY; Northern gov., Bane, suburb, hand collected, V–VII.2017, HM; Northern gov., Bcharre, suburb, hand collected, 34°15'9"N, 36°0'33"E, V–VII.2018, CTK; same but V.2018; same but 31.VII.2018, PN, TN, WY.

Tribe Clytini Mulsant, 1839
Chlorophorus graciosus graciosus (Marseul, 1868)

Material examined – Northern gov., Tannourine env., 2 km N Harissa, Fuwar, stream valley, swept & beaten, 34°12'22"N, 35°55'17"E, 1460 m, 17. & 27.VI.2016, AK, PN, TN; Ehden, Horsh Ehden Natural Reserve, swept & hand collected, 34°18'33"N, 35°59'14"E, 1525 m, 19. & 26.VI.2016, AK, PN, TN; Bcharre env., Quadisha Valley, swept & hand collected, 34°14'57"N, 35°58'34"E, 970 m, 23.VI.2016, AK, TN, WY; same but 27.V.2015, MB, AM, TN, MR; same but 22.VI.2016, MB, AK, TN, WY; 7 km NE Batroun, Qnat, macchia, swept & hand collected, 34°15.323'N, 35°53.667'E, 1195 m, 18.VI.2016, AK, PN, TN; Tannourine env., Chatin, hand collected, 18.VI.2016, MB; South gov., Saidoun, 2.VI.2018, WY.

Chlorophorus sartor (O. F. Müller, 1766)

Material examined – Northern gov., Horsh Ehden Natural Reserve, upper gate, mixed forest, 34°18'15.38"N, 35°59'2.66"E, 1600 m, 4.V.2017, MB, AK, PN, TN, CT; Quadisha Valley, swept & hand collected, 34°14'57"N, 35°58'34"E, 970 m, 23.VI.2016, AK, TN, WY; 7 km NE Batroun, Qnat, macchia, swept & hand collected, 34°15.323'N, 35°53.667'E, 1195 m, 18.VI.2016, AK, PN, TN; Mount Lebanon Range, 5 km NW Nahr Ibrahim, Khdayra, riverside, swept and hand collected, 34°5.112'N, 35°41.602'E, 21.VI.2016, MB, AK, PN, TN, WY.

Chlorophorus varius damascenus (Chevrolat, 1854)
 (Fig. 19)

Material examined – Northern gov., Bcharre env., Quadisha Valley, *ex larva* from *Spartium junceum*, 34°14'57"N, 35°58'34"E, 970 m, 22.VI.2016–10.III.2017, MB, AK, PN, TN, WY; same but *ex larva* from *Juglans*, 23.VI.2016, AK, TN, WY; same but swept, 28.VII.2018, PN, TN, WY; Tannourine El Tahta, macchia, swept & hand collected, 34°12'46"N, 35°52'26"E, 960 m, 27.VII.2018, PN, TN; same but wine trap, 27.VII.–5.VIII.2018; 2 km N Harissa, Fuwar, stream valley, swept &

beaten, 34°12'22"N, 35°55'17"E, 1460 m, 17.VI.2016, AK, PN, TN; 7 km NE Batroun, Qnat, macchia, swept & hand collected, 34°15.323'N, 35°53.667'E, 1195 m, 18.VI.2016, AK, PN, TN; Mount Lebanon, Beit Chabab, suburb, 2016, WY.

Chlorophorus yachovi Sama, 1996

Material examined – Northern gov., 6 km NE Batroun, Barhalioun, macchia, beaten, 34°15.919'N, 35°52.724'E, 1060 m, 18.VI.2016, AK, PN, TN; Ehden, Horsh Ehden Natural Reserve, elytra from hollow *Quercus*, 34°18'33"N, 35°59'14"E, 1525 m, 26.VI.2016, AK, TN; Akkar gov., Fnaidek, *Quercus* forest, from *Quercus* branch, 34°28'19"N, 36°12'28"E, 3.VIII.2018, PN, TN, CT.

Clytus rhamni temesiensis Germar, 1824

Material examined – Northern gov., 7 km NE Batroun, Qnat, macchia, swept & hand collected, 34°15.323'N, 35°53.667'E, 1195 m, 18.VI.2016, AK, PN, TN; Tannourine Cedars Nat. Reserve, swept & hand collected, 34°12'34"N, 35°55'45"E, 1750 m, 18.VI.2016, AK, TN, PN; 2 km N Harissa, Fuwar, stream valley, swept & beaten, 34°12'22"N, 35°55'17"E, 1460 m, 17.VI.2016, AK, PN, TN; Ehden, Horsh Ehden Natural Reserve, swept & hand collected, 34°18'33"N, 35°59'14"E, 1525 m, 19. & 26.VI.2016, AK, PN, TN.

Clytus madoni Pic, 1891

Material examined – Mount Lebanon Range, Kfar Hay, Mar Youanna Maroun, macchia, swept & hand collected, 34°14'47.69"N, 35°45'1.02"E, 322 m, 3.V.2017, MB, AK, PN, TN; Mount Lebanon Range, Kfar Hay, Mar Youanna Maroun, macchia, swept & hand collected, 34°14'47.69"N, 35°45'1.02"E, 322 m, 3.V.2017, MB, AK, PN, TN; Northern gov., 2 km N Harissa, Fuwar, stream valley, swept & beaten, 34°12'22"N, 35°55'17"E, 1460 m, 17.VI.2016, AK, PN, TN.

Libanoclytus tommasoii Sama, Rapuzzi et Kairouz, 2010

Material examined – Northern gov., Bcharre env., Quadisha Valley, reared from *Morus*, 34°14'57"N, 35°58'34"E, 970 m, 26.V.2015, MB, AM, TN, MR (MÁRKUS & NÉMETH 2016); same but 5.V.–V.22.2017, AK, PN, TN, CT; Bcharre env., Quadisha Valley, hand collected from *Ficus carica*, 34°14'57"N, 35°58'34"E, 970 m, 22.VI.2016, MB, AK, PN, TN, WY (MÁRKUS & NÉMETH 2016).

Plagionotus floralis (Pallas, 1776)

Material examined – Northern gov., 2 km N Harissa, Tannourine Cedars Nat. Reserve, swept & hand collected, 34°12'34"N, 35°55'45"E, 1750 m, 16.VI.2016, AK, PN, TN.

Neoplacionotus bobelayei (Brullé, 1832)

Material examined – Northern gov., 2 km N Harissa, Fuwar, stream valley, swept & beaten, 34°12'22"N, 35°55'17"E, 1460 m, 17.VI.2016, AK, PN, TN; 7 km NE Batroun, Qnat, macchia, swept & hand collected, 34°15.323'N, 35°53.667'E, 1195 m, 18.VI.2016, AK, PN, TN; Mount Lebanon Range, Kfar Hay, Mar Youanna Maroun, macchia, swept & hand collected, 34°14'47.69"N, 35°45'1.02"E, 322 m, 3.V.2017, MB, AK, PN, TN.

Xylotrechus raghidae (Sama et Rapuzzi, 2000)
(Fig. 20)

Material examined – Northern gov., Tannourine env., 2 km N Harissa, Tannourine Cedars Nat. Reserve, reared from *Astragalus gummifera*, 34°12'34"N, 35°55'45"E, 1750 m, 18. & 26.VI.2016, AK, PN, TN; same but 1.–29.V.2017; Bcharre env., 1 km E Ariz, Horsh Arz el-Rab, *ex Astragalus gummifera*, 34°14'33"N, 36°2'59"E, 1900 m, 22.V.2015, AM, TN.

Tribe Deilini Fairmaire, 1864

Deilus rugosicollis rugosicollis Rapuzzi et Sama, 2012
(Fig. 21)

Material examined – Mount Lebanon Range, Kfar Hay, Mar Youanna Maroun, macchia, swept & hand collected, 34°14'47.69"N, 35°45'1.02"E, 322 m, 3.V.2017, MB, AK, PN, TN; Arsoun, *Pinus* forest, swept & beaten, 33°51'8.03"N, 35°41'44.36"E, 7.V.2017, AK, PN, TN; Northern gov., Bcharre env., Quadisha Valley, *ex larva* from *Spartium junceum*, 34°14'57"N, 35°58'34"E, 970 m, 22.VI.2016, MB, AK, PN, TN, WY; same but beaten, 5. & 10.V.2017, AK, PN, TN, CT; Tannourine env., 2 km N Harissa, 34°12'22"N, 35°55'17"E, 1460 m, 24.V–30.X.2015, *ex larva Spartium* sp., leg. OA, AM, NN, TN.

Delagrangaeus angustissimus troodi Sama, 1994

(Fig. 22)

Material examined – Northern gov., Bcharre env., Quadisha Valley, ex larva from *Thuja*, 34°14'57"N, 35°58'34"E, 970 m, 22.VI.2016–10.II.2017, MB, AK, PN, TN, WY.

Tribe Graciliini Mulsant, 1839

Axinopalpis alberti Sama, Rapuzzi et Kairouz, 2010

(Fig. 23)

Material examined – Mount Lebanon Range, 5 km NW Nahr Ibrahim, Khdayra, riverside, ex larva from dry branches, 34°5.112'N, 35°41.602'E, 21.VI.2016–15.II.2017, MB, AK, PN, TN, WY; Northern gov., Tannourine env., 2 km N Harissa, Tannourine Cedars Nat. Reserve, 34°12'34"N, 35°55'45"E, 1750 m, 7.V.2016, ex larva from *Prunus* sp., AM.

Tribe Hesperophanini Mulsant, 1839

Hesperophanes sericeus (Fabricius, 1787)

(Fig. 24)

Material examined – Northern gov., Tannourine El Tahta, macchia, reared from dry *Quercus* branch, 34°12'46.84"N, 35°52'26.40"E, 960 m, 3.V.–17.VII.2017, TN.

Stromatium auratum Böber, 1793

Material examined – Mount Lebanon gov., Jbeil distr., Masita, 34°6'15.04"N, 35°40'9.50"E, 13.VII.2017, CT.

Trichoferus fasciculatus fasciculatus (Faldermann, 1837)

Material examined – Northern gov., 6 km NE Batroun, Barhalioun, macchia, ex larva from *Spartium junceum*, 34°15.919'N, 35°52.724'E, 1060 m, 26.VI.2016, AK, PN, TN; Tannourine El Tahta, macchia, at light, 34°12'46"N, 35°52'26"E, 960 m, 25.VII.2018, PN, TN; same but wine trap, 27.VII.–5.VIII.2018.

Trichoferus sp. 1.
(Fig. 41)

Material examined – Northern gov., 6 km NE Batroun, Barhalioun, macchia, wine trap, 34°15.919'N, 35°52.724'E, 1060 m, 19–26.VI.2016, AK, PN, TN.

Remarks – This female specimen collected by wine trap at Barhalioun probably represents an undescribed species of *Trichoferus* near to *Trichoferus preissi* (Heyden, 1894). Without available type material and more specimens we have not made a taxonomical decision here.

Trichoferus sp. 2.
(Fig. 42)

Material examined – Northern gov., Bcharre env., Quadisha Valley, ex larva from *Spartium junceum*, 34°14'57"N, 35°58'34"E, 970 m, 22.VI.2016, MB, AK, PN, TN, WY.

Remarks – This male specimen reared from *Spartium junceum* in Quadisha valley probably represents an undescribed species of *Trichoferus*. Without available type material and more specimens we have not made a taxonomical decision here.

Trichoferus griseus (Fabricius, 1792)

Material examined – Northern gov., Bcharre env., Quadisha Valley, reared from *Cercis siliquastrum*, 34°14'57"N, 35°58'34"E, 970 m, 5.V.2017, AK, PN, TN, CT.

Trichoferus kotschyi (Ganglbauer, 1883)

Material examined – Mount Lebanon Range, Arsoun, *Pinus* forest, from *Tomicus* pheromone trap, 33°51'8.03"N, 35°41'44.36"E, X.2016, NN.

Tribe Hylotruperini Zagajkevitch, 1991
Hylotrupes bajulus (Linnaeus, 1758)

Material examined – Mount Lebanon Range, Arsoun, *Pinus* forest, from *Tomicus* pheromone trap, 33°51'8.03"N, 35°41'44.36"E, X.2016, NN; Northern gov., Bcharre, suburb, hand collected, 34°15'9"N, 36°0'33"E, V-VII.2018, CTK.



Figs 18–25. Live longhorn individuals: 18 = *Ropalopus ledereri wittmeri* Demelt, 1970, 19 = *Chlorophorus varius damascenus* (Chevrolat, 1854), 20 = *Xylotrechus raghidae* (Sama et Rapuzzi, 2000), 21 = *Deilus rugosicollis rugosicollis* Rapuzzi et Sama, 2012, 22 = *Delagrangeus angustissimus troodi* Sama, 1994, 23 = *Axinopalpis alberti* Sama, Rapuzzi et Kairouz 2010, 24 = *Hesperophanes sericeus* (Fabricius, 1787), 25 = *Molorchus juglandis* Sama, 1982. Not to scale (photos by Tamás Németh)

Tribe Molorchini Gistel, 1848
Molorchus juglandis Sama, 1982
(Fig. 25)

Material examined – Northern gov., Tannourine env., 2 km N Harissa, stream valley, reared from *Juglans*, 34°12'22"N, 35°55'17"E, 1460 m, 24.V.2015–24.IV.2016, OA, AM, NN, TN; same but Fuwar, stream valley, 17.VI.2016–IV.2017, AK, PN, TN; Ehden, Horsh Ehden Natural Reserve, reared from *Prunus*, 34°18'33"N, 35°59'14"E, 1525 m, 19.VI.2016, AK, PN, TN; Bcharre env., Quadisha Valley, *ex larva* from *Juglans* sp., 34°14'57"N, 35°58'34"E, 970 m, 22.VI.2016, MB, AK, PN, TN, WY.

Molorchus sterbai Adlbauer, 1988

Material examined – Northern gov., Bcharre env., 1 km E Ariz, Horsh Arz el-Rab, ancient *Cedrus* forest, 34°14'33"N, 36°2'59"E, 1900 m, 30.V.–VI.3.2015, *ex Cedrus libani*, AM, TN.

Tribe Psebiini Lacordaire, 1868
Nathrius brevipennis (Mulsant, 1839)

Material examined – Northern gov., Ehden, Horsh Ehden Natural Reserve, upper gate, mixed forest, reared from *Acer*, 34°18'15.38"N, 35°59'2.66"E, 1600 m, 4.V.2017m MB, AK, PN, TN, CT; Tannourine env., 2 km N Harissa, stream valley, reared from *Juglans* and *Pistacia*, 34°12'22"N, 35°55'17"E, 1460 m, 24.V.–3.VI.2015, OA, AM, NN, TN; same but Fuwar, stream valley, 17.VI.2016–IV.2017, AK, PN, TN; same but at light.

Tribe Purpuricenini J. Thomson, 1861
Purpuricenus dalmatinus Sturm, 1843

Material examined – Akkar gov., Fnaidek, *Quercus* forest, reared from *Quercus* branch, 34°28'19"N, 36°12'28"E, 3.VIII.2018, PN, TN, CT.

Purpuricenus interscapillatus longevittatus Pic, 1941

Material examined – 7 km NE Batroun, Qnat, macchia, wine-trap, 34°15.323'N, 35°53.667'E, 1195 m, 18.VI.2016, AK, PN, TN.

Purpuricenus budensis (Götz, 1783)

Material examined – South gov., Saidoun, 2. & 10.VI.2018, WY.

Tribe Stenopterini Gistel, 1848
Callimus femoratus (Germar, 1824)
(Fig. 26)

Material examined – Northern gov., Tannourine env., 2 km N Harissa, Tannourine Cedars Nat. Reserve, swept, 34°12'34"N, 35°55'45"E, 1750 m, 5.V.2017, MB; Tannourine El Tahta, macchia, beaten & netted from canopy, 34°12'46.84"N, 35°52'26.40"E, 960 m, 10.V.2017, AK, TN, CT; Tannourine env., 2 km N Harissa, Fuwar, swept, 34°12'22"N, 35°55'17"E, 1460 m, 17. & 27.VI.2016, AK, PN, TN; Bcharre env., Quadisha Valley, swept & beaten, 34°14'57"N, 35°58'34"E, 970 m, 27.V.2015, MB, AM, TN, MR; same, but 5. & 10.V.2017, AK, PN, TN, CT; Ehden, Horsh Ehden Natural Reserve, upper gate, mixed forest, reared from *Acer*, 34°18'15.38"N, 35°59'2.66"E, 1600 m, 4.V.2017, MB, AK, PN, TN, CT; Ehden, Horsh Ehden Natural Reserve, swept & hand collected, 34°18'33"N, 35°59'14"E, 1525 m, 19.VI.2016, AK, PN, TN; 7 km NE Batroun, Qnat, macchia, swept & hand collected, 34°15.323'N, 35°53.667'E, 1195 m, 18.VI.2016, AK, PN, TN; Mount Lebanon Range, 5 km NW Nahr Ibrahim, Khdayra, riverside, swept and hand collected, 34°5.112'N, 35°41.602'E, 21.VI.2016, MB, AK, PN, TN, WY; Kfar Hay, Mar Youanna Maroun, macchia, swept & hand collected, 34°14'47.69"N, 35°45'1.02"E, 322 m, 3.V.2017, MB, AK, PN, TN; Bekaa Valley, Taanayel, university farm, 33°47'33.63"N, 35°52'2.41"E, 878 m, 8.V.2017, AK, PN, TN.

Stenopterus rufus syriacus Pic, 1892

Material examined – Northern gov., Tannourine El Tahta, macchia, swept & hand collected, 34°12'46.84"N, 35°52'26.40"E, 960 m, 10.V.2017, AK, TN, CT; Mount Lebanon Range, Arsoun, *Pinus* forest, swept, 33°51'8.03"N, 35°41'44.36"E, X.2016, NN; Jounieh, Holy Spirit University of Kaslik, botanical garden, 24.V.2015, SK; Kfar Hay, Mar Youanna Maroun, macchia, swept & hand collected, 34°14'47.69"N, 35°45'1.02"E, 322 m, 3.V.2017, MB, AK, PN, TN.

Subfamily Lamiinae Latreille, 1825

Tribe Acanthocinini Blanchard, 1845

Leiopus syriacus syriacus (Ganglbauer, 1884)

Material examined – Northern gov., Bcharre env., Quadisha Valley, reared from *Morus*, 34°14'57"N, 35°58'34"E, 970 m, 5.V.2017, AK, PN, TN, CT; same but beaten, 22.VI.2016, MB, AK, PN, TN, WY (MÁRKUS & NÉMETH 2016); same but swept, 5.V.2017, AK, TN, PN, CT. Tannourine env., 2 km N Harissa, stream valley, reared from *Juglans regia*, 34°12'22" N, 35°55'17" E, 1460 m, 25.V.2015, OA, AM, NN, TN (MÁRKUS & NÉMETH 2016); 2 km N Harissa, Fuwar, stream valley, swept & beaten, 34°12'22"N, 35°55'17"E, 1460 m, 17. & 27.VI.2016, AK, PN, TN.

Tribe Agapanthiini Mulsant, 1839

Agapanthia mutinensium Sama et Rapuzzi, 2010

(Fig. 27)

Material examined – Mount Lebanon Range, Kfar Hay, Mar Youanna Maroun, macchia, swept & hand collected, 34°14'47.69"N, 35°45'1.02"E, 322 m, 3.V.2017, MB, AK, PN, TN.

Agapanthia subsimplicicornis Sama et Rapuzzi, 2010

Material examined – Northern gov., Bcharre env., Quadisha Valley, swept & hand collected, 34°14'57"N, 35°58'34"E, 970 m, 27.V.2015, MB, AM, TN, MR.

Agapanthia suturalis (Fabricius, 1787)

Material examined – Northern gov., Tannourine El Tahta, macchia, swept & hand collected, 34°12'46.84"N, 35°52'26.40"E, 960 m, 3.V.2017, MB, AK, PN, TN; Tannourine El Tahta, macchia, swept, 12'46.84"N, 35°52'26.40"E, 960 m, 10.V.2017, AK, TN, CT; Tannourine env., 2 km N Harissa, Tannourine Cedars Nat. Reserve, swept, 34°12'34"N, 35°55'45"E, 1750 m, 5.V.2017, MB; Bcharre env., Quadisha Valley, swept & beaten, 34°14'57"N, 35°58'34"E, 970 m, 5.V.2017, AK, PN, TN, CT; Ehden, Horsh Ehden Natural Reserve, upper gate, mixed forest, 34°18'15.38"N, 35°59'2.66"E, 1600 m, 4.V.2017, MB, AK, PN, TN, CT; Mount Lebanon Range, Kfar Hay, Mar Youanna Maroun, macchia, swept & hand collected, 34°14'47.69"N, 35°45'1.02"E, 322 m, 3.V.2017, MB, AK, PN, TN.

Calamobius filum (Rossi, 1790)

Material examined – Northern gov., Tannourine El Tahta, macchia, swept & hand collected, 34°12'46.84"N, 35°52'26.40"E, 960 m, 3. & 10.V.2017, MB, AK, PN, TN; Tannourine env., 2 km N Harissa, Tannourine Cedars Nat. Reserve, swept & hand collected, 34°12'34"N, 35°55'45"E, 1750 m, 23.V.2015, OA, MB, AM, NN, TN, MR, WY; same but 16.VI.2016, AK, PN, TN; same but 5.V.2017, MB; Bcharre env., 1 km E Ariz, Horsh Arz el-Rab, ancient *Cedrus* forest, swept & hand collected, 34°14'33"N, 36°2'59"E, 1900 m, 20.V.2015, AM, TN; Bcharre env., Quadisha Valley, swept & hand collected, 34°14'57"N, 35°58'34"E, 970 m, 27.V.2015, MB, AM, TN, MR; Tannourine env., Chatin, hand collected, 18.VI.2016, MB; Bekaa Valley, Taanayel, university farm, 33°47'33.63"N, 35°52'2.41"E, 878 m, 8.V.2017, AK, PN, TN; Mount Lebanon Range, Kfar Hay, Mar Youanna Maroun, macchia, swept & hand collected, 34°14'47.69"N, 35°45'1.02"E, 322 m, 3.V.2017, MB, AK, PN, TN.

Tribe Apodasyini Lacordaire, 1872
Deroplia genei genei (Aragona, 1830)

Material examined – Northern gov., Bcharre env., Quadisha Valley, beaten & netted from canopy, 34°14'57"N, 35°58'34"E, 970 m, 10.V.2017, AK, PN, TN, CT.

Tribe Batocerini J. Thomson, 1864
Batocera rufomaculata (DeGeer, 1775)

Material examined – Mount Lebanon Range, Dik El-Mehdi, IX.2018, WY; Northern gov., Fanar, suburb, hand collected, 1.VI.2016, WY.

Tribe Dorcadionini Swainson, 1840
Dorcadion drusum (Chevrolat, 1870)
(Fig. 28)

Material examined – Northern gov., Bcharre env., 4 km SE Ariz, hand collected at snow banks, 34°12'41"N, 36°3'34"E, 2570 m, 20.V.2015, AM, TN; 6 km W Tannourine, "Tann. uplands", hand collected, 34°12'30"N, 36°0'27"E, 26.VII.2018, PN, TN [dead specimen]; Ehden, S to Horsh Ehden Natural Reserve, meadow, hand collected, 34°17'38.85"N, 35°59'0.31"E, 1771 m, 4.V.2017, MB, AK, PN, TN, CT; Bekaa Valley, Touaite, 33°51'49.00"N, 35°51'25.00"E, 22.III.2018, WY.

Tribe Phytoeciini Mulsant, 1839
Phytoecia (Helladia) alziari (Sama, 1992)
(Fig. 29)

Material examined – Mount Lebanon Range, Kfar Hay, Mar Youanna Maroun, macchia, swept & hand collected, 34°14'47.69"N, 35°45'1.02"E, 322 m, 3.V.2017, MB, AK, PN, TN.

Phytoecia (Helladia) armeniaca Frivaldszky, 1878
(Fig. 30)

Material examined – Northern gov., Tannourine env., 2 km N Harissa, Tannourine Cedars Nat. Reserve, 34°12'28.75"N; 35°56'5.01"E, 1802 m, hand collected & swept, 10.V.2017, AK, PN, TN.

Phytoecia (Helladia) humeralis (Waltl, 1838)

Material examined – Mount Lebanon Range, Kfar Hay, Mar Youanna Maroun, macchia, swept & hand collected, 34°14'47.69"N, 35°45'1.02"E, 322 m, 3.V.2017, MB, AK, PN, TN.

Phytoecia (Helladia) orbicollis Reiche et Saulcy, 1858
(Fig. 31)

Material examined – Northern gov., Bcharre env., 4 km E Ariz, hand collected, 2430 m, 24.VI.2016, MB, AK, PN, TN, MR, WY; Tannourine El Tahta, macchia, swept, 34°12'46.84"N, 35°52'26.40"E, 960 m, 10.V.2017, AK, TN, CT.

Phytoecia (Helladia) paulusi paulusi Holzschuh, 1971
(Fig. 32)

Material examined – Northern gov., Tannourine env., 2 km N Harissa, Tannourine Cedars Nat. Reserve, 34°12'28.75"N; 35°56'5.01"E, 1802 m, hand collected & swept, 10.V.2017, AK, PN, TN.

Phytoecia (Musaria) astarte perrini Pic, 1892
(Fig. 33)

Material examined – Northern gov., Tannourine env., 2 km N Harissa, Tannourine Cedars Nat. Reserve, 34°12'28.75"N; 35°56'5.01"E, 1802 m, hand collected & swept, 10.V.2017, AK, PN, TN.

Phytoecia (Musaria) wachanrui Mulsant, 1851
(Fig. 34)

Material examined – Northern gov., Ehden, S to Horsh Ehden Natural Reserve, meadow, hand collected, 34°17'38.85"N, 35°59'0.31"E, 1771 m, 4.V.2017, MB, AK, PN, TN, CT; Bcharre env., 1 km E Ariz, Horsh Arz el-Rab, ancient *Cedrus* forest, swept & hand collected, 34°14.494'N, 36°2.884'E, 1900 m, 10.V.2017, MB; Bekaa Valley, Hazerta, 33°50'56"N; 35°53'05"E, 22.III.2018, WY.

Phytoecia (Phytoecia) caerulea bethseba Reiche et Saulcy, 1858

Material examined – Bekaa Valley, Terbol, "Icarda", 23.IV.2017, WY.

Phytoecia (Phytoecia) croceipes Reiche et Saulcy, 1858
(Figs 35–36)

Material examined – Northern gov., Bcharre env., Quadisha Valley, swept & beaten, 34°14'57"N, 35°58'34"E, 970 m, 5.V.2017, AK, PN, TN, CT; Tannourine El Tahta, macchia, swept, 34°12'46.84"N, 35°52'26.40"E, 960 m, 10.V.2017, AK, TN, CT; Mount Lebanon Range, Kfar Hay, Mar Youanna Maroun, macchia, swept & hand collected, 34°14'47.69"N, 35°45'1.02"E, 322 m, 3.V.2017, MB, AK, PN, TN.

Phytoecia (Phytoecia) geniculata Mulsant, 1862
(Figs 37–38)

Material examined – Northern gov., Tannourine El Tahta, macchia, beaten & netted from canopy, 34°12'46.84"N, 35°52'26.40"E, 960 m, 11.V.2017, AK, TN, CT.

Phytoecia (Phytoecia) pubescens Pic, 1895
(Figs 39–40)

Material examined – Mount Lebanon Range, Arsoun, *Pinus pinea* ecosyst., 21.VI.1996., Routier & Nemer, Ref. 22Cb IIE 23988; Kfar Hay, Mar Youanna Maroun, macchia, swept & hand collected, 34°14'47.69"N, 35°45'1.02"E, 322 m, 3.V.2017, MB, AK, PN, TN.

Phytoecia (Phytoecia) pustulata pustulata Schrank, 1776

Material examined – Northern gov., Ehden, Horsh Ehden Natural Reserve, swept & hand collected, 34°18'33"N, 35°59'14"E, 1525 m, 21.V.2015, MB, AM, TN.

Phytoecia (Phytoecia) virgula virgula Charpentier, 1825

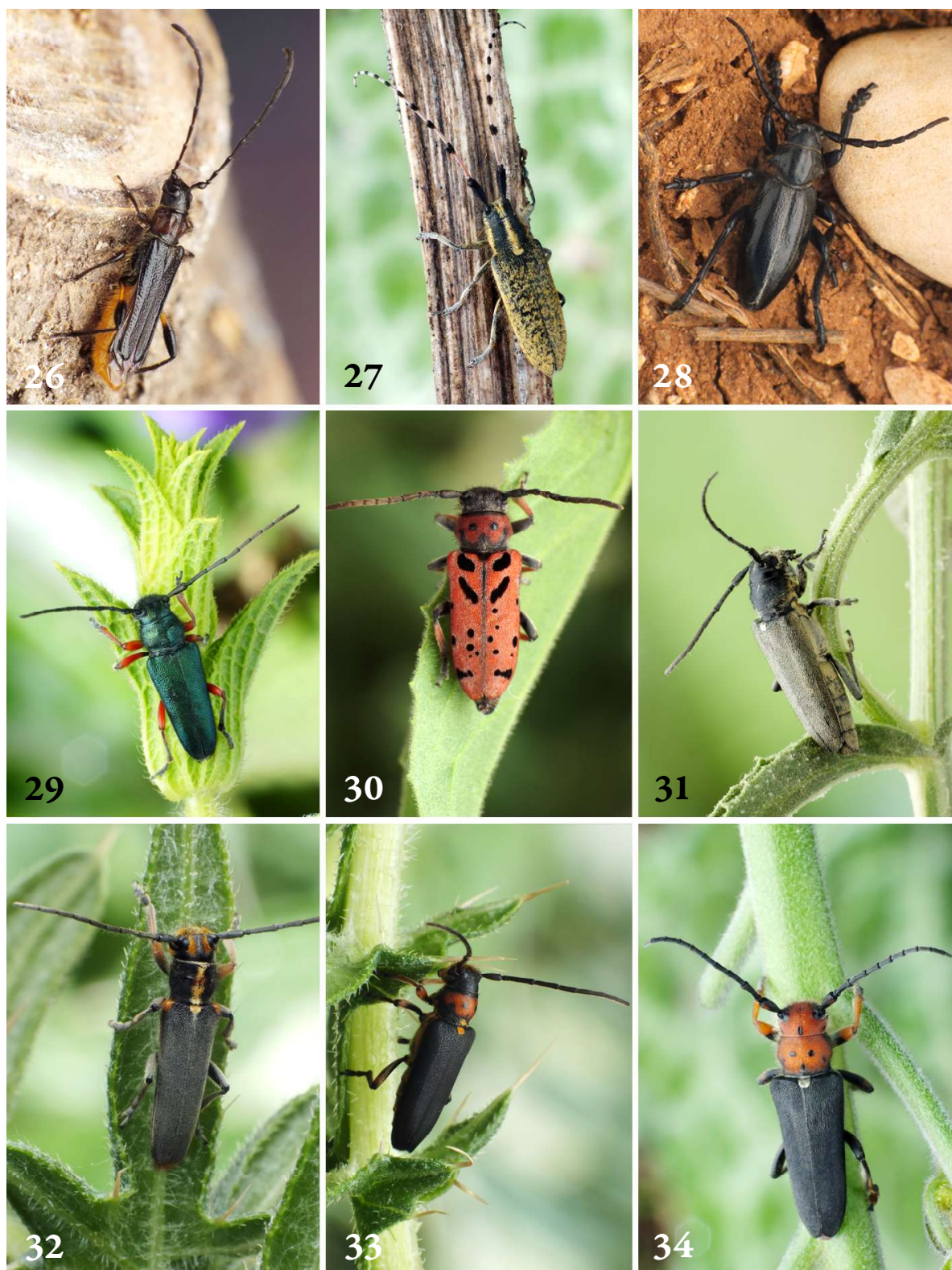
Material examined – Northern gov., Ehden, Horsh Ehden Natural Reserve, swept & hand collected, 34°18'33"N, 35°59'14"E, 1525 m, 21.V.2015, MB, AM, TN; 2 km N Harissa, Tannourine Cedars Nat. Reserve, swept & hand collected, 34°12'34"N, 35°55'45"E, 1750 m, 16.VI.2016, AK, PN, TN; Tannourine El Tahta, macchia, swept, 34°12'46.84"N, 35°52'26.40"E, 960 m, 10.V.2017, AK, TN, CT; Bcharre env., Quadisha Valley, swept & beaten, 34°14'57"N, 35°58'34"E, 970 m, 5.V.2017, AK, PN, TN, CT.

Phytoecia (Parobereina) vittipennis vittipennis Reiche, 1877

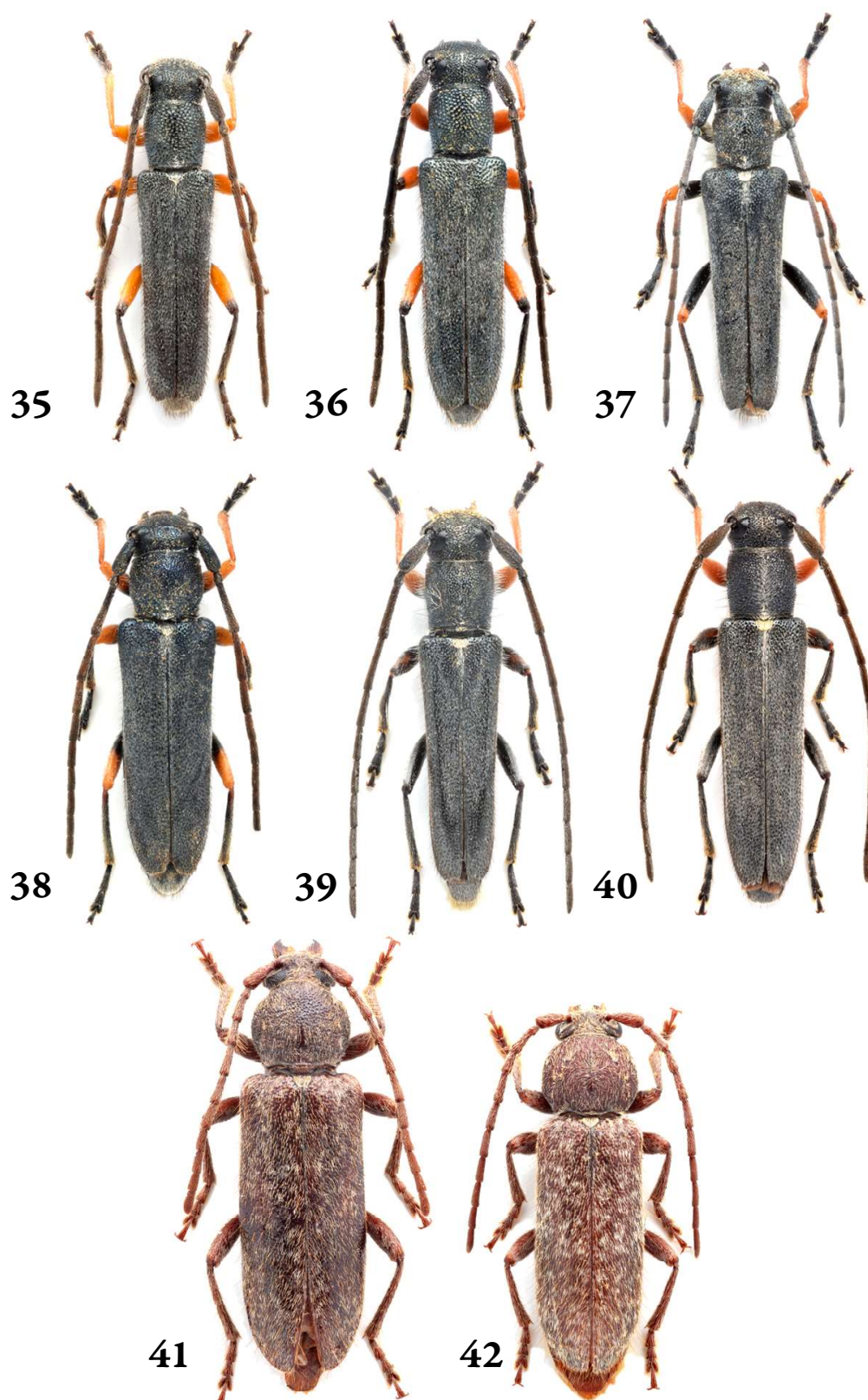
Material examined – Northern gov., 2 km N Harissa, Tannourine Cedars Nat. Reserve, swept & hand collected, 34°12'34"N, 35°55'45"E, 1750 m, 25.VII.2018, PN, TN; 2 km N Harissa, Tannourine Cedars Nat. Reserve, swept & hand collected, 34°12'34"N, 35°55'45"E, 1750 m, 18.VI.2016, AK, PN, TN.

Phytoecia (Opsilia) coeruleascens (Scopoli, 1763)

Material examined – Northern gov., Bcharre env., 1 km E Ariz, Horsh Arz el-Rab, ancient *Cedrus* forest, swept & hand collected, 34°14'33"N, 36°2'59"E, 1900 m, 20.V.2015, AM, TN; Tourza, shrubs, hand collected, 34°16'34"N, 35°53'54"E, 600 m, 19.V.2015, AM, TN.



Figs 26–34. Live longhorn individuals: 26 = *Callimus femoratus* (Germar, 1824), 27 = *Agapanthia mutinensium* Sama et Rapuzzi, 2010, 28 = *Pedestredorcadion drusum* (Chevrolat, 1870), 29 = *Phytoecia alziari* (Sama, 1992), 30 = *Ph. armeniaca* Frivaldszky, 1878, 31 = *Ph. orbicollis* Reiche et Saulcy, 1858, 32 = *Ph. paulusi paulusi* Holzschuh, 1971, 33 = *Ph. astarte perrini* Pic, 1892, 34 = *Ph. wachanrui* Mulsant, 1851. Not to scale (photos by Tamás Németh)



Figs 35–42. Habitus images: 35 = *Phytoecia croceipes* Reiche et Saulcy, 1858, male, 36 = female, 37 = *Ph. geniculata* Mulsant, 1862, male, 38 = female, 39 = *Ph. pubescens* Pic, 1895, male, 40 = female, 41 = *Trichoferus* sp. from Batroun, Barhalioun, 42 = *Trichoferus* sp. from Bcharre, Quadisha valley. Not to scale (photos by Tamás Németh)

Pilemia (Pseudopilemia) hirsutula hirsutula G. F. Frölich, 1793

Material examined – Northern gov., Ehden, Horsh Ehden Natural Reserve, swept & hand collected, 34°18'33"N, 35°59'14"E, 1525 m, 21.V.2015, MB, AM, TN.

Tribe Pteropliini J. Thomson, 1860

Niphona picticornis Mulsant, 1839

Material examined – Northern gov., Bcharre env., Quadisha Valley, *ex larva* from *Spartium junceum*, 34°14'57"N, 35°58'34"E, 970 m, 22.VI.2016–5.II.2017, MB, AK, PN, TN, WY; same but from *Ficus carica*, 22.VI.2016–1.IX.2016; same but from vegetation, 23.VI.2016, AK, TN, WY; same but from *Morus*, 27.V.2015–8.II.2016, MB, AM, TN, MR; Tannourine env., 2 km N Harissa, Tannourine Cedars Nat. Reserve, swept, 34°12'34"N, 35°55'45"E, 1750 m, 5.V.2017, MB; Tannourine El Tahta, macchia, reared from dry *Quercus* branch, 34°12'46.84"N, 35°52'26.40"E, 960 m, 3.V.2017, TN; Mount Lebanon Range, Arsoun, *Pinus* forest, from *Tomicus* pheromone trap, 33°51'8.03"N, 35°41'44.36"E, X.2016, NN.

Tribe Tetropini Portevin, 1927

Tetrops praeustus angorensis Pic, 1918

Material examined – Northern gov., Tannourine env., 2 km N Harissa, Tannourine Cedars Nat. Reserve, yellow sticky cardboard trap, 34°12'34"N, 35°55'45"E, 1750 m, 21.VI.2016, MR; same but swept, 10.V.2017, AK, PN, TN.

*

Acknowledgements – We thank Gábor Csorba (deputy general director, HNHM) without whom the Lebanese trips could not be realised. This study would not be possible without the kind help of Oscar Akiki, Mira Boustani, Martine Rehayem, Petra Nemes and Hanna Mikhael during the fieldwork. Special thanks for Mikhail Danilevsky for input on the manuscript.

REFERENCES

- COCQUEMPOT C., NEMER N., BRUSTEL H. & TANIOS C. 2016: Nouvelles données et nouveau catalogue des Coléoptères Cerambycidae du Liban (Coleoptera, Cerambycoidea). – *Bulletin de la Société entomologique de France* **121**(1): 91–104.
- DANILEVSKY M. L. 2019: *Catalogue of Palaearctic Cerambycoidea*. – Online: www.zin.ru/Animalia/Coleoptera/rus/danlists.htm [Accessed 25 November 2019.]
- DANILEVSKY M. L. & NÉMETH T. 2017: A new subspecies of *Cortodera colchica* (Faldermann, 1836) from Lebanon (Coleoptera, Cerambycidae). – *Humanity Space. International Almanac* **6**(5): 837–842.
- KASATKIN D. G. 2019: A new subspecies of longicorn beetles of the genus *Cortodera* Mulsant, 1863 (Coleoptera: Cerambycidae) from Lebanon. – *Caucasian Entomological Bulletin* **15**(1): 131–133. <https://doi.org/10.23885/181433262019151-131133>
- MÁRKUS A. & NÉMETH T. 2016: A new species of *Alosterna* Mulsant, 1863 from Lebanon, and notes on other species (Coleoptera: Cerambycidae). – *Folia entomologica hungarica* **77**: 23–32. <https://doi.org/10.17112/FoliaEntHung.2016.77.23>
- SAMA G., RAPUZZI P. & KAIROUZ A. 2010: Catalogue commenté des Cerambycidae du Liban. An annotated catalogue of the Cerambycidae of Lebanon (Insecta Coleoptera Cerambycidae). – *Quaderno di Studi e Notizie di Storia Naturale della Romagna* **30**: 131–201.
- SATTOUT E. & NEMER N. 2008: Managing climate change effects on relic forest ecosystems: A program for Lebanese Cedar. – *Biodiversity* **9**(3–4): 122–130. 130. <https://doi.org/10.1080/14888386.2008.9712917>