

**Notes on snout beetles of Lebanon
(Coleoptera: Curculionoidea, without Scolytinae and Platypodinae)**

Valentin SZÉNÁSI^{1*}, Nabil NEMER² & Tamás NÉMETH³

¹ *Duna-Ipoly National Park Directorate,*

H-2509 Esztergom, Strázsahegy, Hungary. E-mail: szvalent@gmail.com

² *Department of Agriculture and Food Engineering, Holy Spirit Universty of Kaslik,*

P.O.Box 446, Jounieh, Lebanon. E-mail: nabilnemer@usek.edu.lb

³ *Hungarian Natural History Museum, Department of Zoology,*

H-1088 Budapest, Baross u.13, Hungary. E-mail: nemeth.tamas@nhmus.hu

Abstract – First records of 93 species of fungus weevils (Anthribidae), leaf rolling weevils (Attelabidae), seed weevils (Brentidae: Apioninae) and true weevils (Curculionidae) to the fauna of Lebanon are reported with the list of the 145 species of Curculionoidea collected by the Hungarian Natural History Museum and cooperating partners in Lebanon between 2015 and 2018. With 18 figures.

Key words – biodiversity, faunistic, Middle East, new record, life history

INTRODUCTION

Lebanon's 10.452 km² surface area harbours a rich flora estimated at 2790 species of vascular plants (YAZBEK *et al.* 2011) making the country part of the Conservation International's Mediterranean Basin Biodiversity Hotspot (MYERS *et al.* 2000). The North of Lebanon includes the most diverse forests extending on different altitudinal gradients with the highest mountain peak in Lebanon at 3090 m a.s.l. Four protected cedar forests exist here: Qammoua Protected Forest Area, Tannourine Cedar Forest Nature Reserve (Fig. 1), Ehden Nature Reserve, and Bcharre Arz el-Rab. The highest concentration of forests in Lebanon is present in the North (30%) and in the Mount Lebanon Range (37%) (KHOURY *et al.* 2015).

*Corresponding author.

In the recent years entomological collecting trips were organised by the Hungarian Natural History Museum (HNHM, Budapest) with the cooperation of Holy Spirit University of Kaslik, Lebanon, and The Committee of Cedar Forest Friends, Bcharre, Lebanon, for exploring biodiversity of the country.

The trips in May 2015, June 2016, May 2017, and in July and August 2018 resulted in important material of Coleoptera deposited in the Coleoptera Collection of HNHM. During these trips, the entomologists visited different types of habitats, and collected many species of various beetle groups including Curculionoidea. As a result, new species of several beetle families such as Cerambycidae (MÁRKUS & NÉMETH 2016), Chrysomelidae (BEZDĚK 2018) and Elateridae (NÉMETH 2019) were described. New Curculionidae species were described recently from the genera *Bradybatus* Germar, 1823 (KOŠŤÁL 2018) and *Brachysomus* Schoenherr, 1823 (SZÉNÁSI & NÉMETH 2018). Here we list the 145 species collected by the HNHM and cooperating partners. We found 93 species new for the fauna of Lebanon.

MATERIAL AND METHODS

Classification follows ALONSO-ZARAZAGA *et al.* (2017), GERMANN (2018), ARZANOV & KASATKIN (2018) and KOŠŤÁL & CALDARA (2019). Subfamilies are listed under families, tribes are listed alphabetically under subfamilies, and species are listed alphabetically under tribes. The voucher specimens are deposited in the Coleoptera Collection of HNHM. The number of collected specimens are in parentheses after each locality. For collecting site images see NÉMETH *et al.* (2019).

Abbreviations of collectors – AK = Attila Kótán, AM = András Márkus, CT = Challita Tanios, MB = Mira Boustani, MR = Martine Rehayem, NN = Nabil Nemer, OA = Oscar Akiki, PN = Petra Nemes, SK = Staffan Kyrk, TN = Tamás Németh, WY = Wael Yammine.

LIST OF CURCULIONOIDEA COLLECTED DURING THE LEBANESE TRIPS

Family ANTHRIBIDAE Billberg, 1820

Subfamily Anthribinae Billberg, 1820

Tribe Platyrhinini Imhoff, 1856

Platyrhinus resinosus (Scopoli, 1763)

Material examined – Northern gov., Baabda, Wadi Chahrour, 33°49'4.11"N, 35°33'28.01"E, 3.V. 2017, leg. NN (1).

Remark – First record for Lebanon.

Subfamily Choraginae Kirby, 1819

Tribe Araecerini Lacordaire, 1865

Araecerus fasciculatus (DeGeer, 1775)

Material examined – Mount Lebanon gov., Jounieh, Holy Spirit University of Kaslik, botanical garden, 19.V.2015, leg. AM, TN (1), Arsoun, 2.V.2016, NN (1).

Remark – First record for Lebanon.

Tribe Piesocorynini Valentine, 1960

Phaenotheriosoma besucheti Frieser, 1978

(Figs 2, 7)

Material examined – Northern gov., Tannourine env., 2 km N Harissa, Tannourine Cedars Nat. Reserve, sifted from leaf litter, 34°12'34"N, 35°55'45"E, 1750 m, 6.V.2017, leg. AK, PN, TN (3).

Family ATTELABIDAE Billberg, 1820

Subfamily Rhynchitinae Gistel, 1848

Tribe Auletini Desbrochers des Loges, 1908

Eomesauletes politus (Lepeletier et Audinet-Serville, 1825)

Material examined – Northern gov., Bcharre env., Quadisha Valley, swept & beaten, 34°14'57"N, 35°58'34"E, 970 m, 5.V.2017, leg. AK, PN, TN, CT (6); same but beaten & netted from canopy, 10.V.2017 (4); Tannourine env., 2 km N Harissa, Tannourine Cedars Nat. Reserve, 34°12'34"N, 35°55'45"E, 1750 m, 23.V.2015, leg. OA, MB, AM, NN, TN, MR, WY (1); Tannourine El Tahta, macchia, beaten & netted from canopy, 34°12'46.84"N, 35°52'26.40"E, 960 m, 10.V.2017, leg. AK, TN, CT (1); Mount Lebanon Range, Kfar Hay, Mar Youanna Maroun, macchia, swept & hand collected, 34°14'47.69"N, 35°45'1.02"E, 322 m, 3.V.2017, leg. MB, AK, PN, TN (1).

Tribe Deporaini Voss, 1929

Deporaus podager (Desbrochers des Loges, 1889)

(Fig. 8)

Material examined – Northern gov., Ehden, Horsh Ehden Natural Reserve, swept, 34°18'33"N, 35°59'14"E, 1525 m, 21.V.2015, leg. MB, AM, TN (1).

Remark – First record for Lebanon.

Tribe Rhynchitini Gistel, 1848
Lasiorrhynchites syriacus (Desbrochers des Loges, 1869)

Material examined – Northern gov., 7 km NE Batroun, Qnat, macchia, swept & hand collected, 34°15.323'N, 35°53.667'E, 1195 m, 18.VI.2016, leg. AK, PN, TN (2); Tannourine env., 2 km N Harissa, Tannourine Cedars Nat. Reserve, 34°12'34"N, 35°55'45"E, 1750 m, 23.V.2015, leg. OA, MB, AM, NN, TN, MR, WY (1); Tannourine El Tahta, macchia, beaten & netted from canopy, 34°12'46.84"N, 35°52'26.40"E, 960 m, 10.V.2017, leg. AK, TN, CT (1); Ehden, Horsh Ehden Natural Reserve, swept & hand collected, 34°18'33"N, 35°59'14"E, 1525 m, 19.VI.2016, leg. AK, PN, TN (1); Mount Lebanon Range, Arsoun, *Pinus* forest, from *Tomicus* pheromone trap, 33°51'8.03"N, 35°41'44.36"E, X.2016, leg. NN (2).

Remark – First records for Lebanon.

Mecorhis ungarica Herbst, 1783

Material examined – Mount Lebanon Range, Arsoun, *Pinus* forest, from *Tomicus* pheromone trap, 33°51'8.03"N, 35°41'44.36"E, X.2016, leg. NN (1); Northern gov., Tannourine env., 2 km N Harissa, Tannourine Cedars Nat. Reserve, 34°12'34"N, 35°55'45"E, 1750 m, 23.V.2015, leg. OA, MB, AM, NN, TN, MR, WY (1).

Remark – First records for Lebanon.

Rhynchites bacchus (Linnaeus, 1758)

Material examined – Northern gov., Tannourine env., 2 km N Harissa, Tannourine Cedars Nat. Reserve, 34°12'34"N, 35°55'45"E, 1750 m, 23.V.2015, leg. OA, MB, AM, NN, TN, MR, WY (1).

Remark – First record for Lebanon.

Tatianaerhynchites aequatus (Linnaeus, 1767)

Material examined – Northern gov., Ehden, Horsh Ehden Natural Reserve, swept & hand collected, 34°18'33"N, 35°59'14"E, 1525 m, 21.V.2015, 2.V.2017, leg. MB, AK, AM, PN & TN (1); Tannourine env., 2 km N Harissa, Tannourine Cedars Nat. Reserve, 34°12'34"N, 35°55'45"E, 1750 m, 23.V.2015, leg. OA, MB, AM, NN, TN, MR, WY (4).

Remark – First records for Lebanon.



Figs 1–6. Photos in nature: 1 = collecting site at Tannourine Cedars Natural Reserve, 2 = *Phaenotheriosoma besucheti* Frieser, 1978, 3 = *Brachycerus aegyptiacus* Olivier, 1807, 4 = *Meneleon signaticollis* (Gyllenhal, 1834), 5 = *Larinus onopordi* (Fabricius, 1787), 6 = *Lixus rectodorsalis* Petri, 1904. Not to scale (photos by Tamás Németh)

Family BRENTIDAE Billberg, 1820
Subfamily Apioninae Schoenherr, 1823
Tribe Apionini Schoenherr, 1823
Alocatron curvirostre (Gyllenhal, 1833)

Material examined – Northern gov., Bcharre env., Quadisha Valley, swept & beaten, 34°14'57"N, 35°58'34"E, 970 m, 5.V.2017, leg. AK, PN, TN, CT (2); Mount Lebanon Range, Aintoura, Bkerki Valley, 33°57'52.15"N, 35°38'15.95"E, swept & beaten, 8.V.2017, leg. AK, PN, TN (1).

Remark – First records for Lebanon.

Aspidapion aeneum (Fabricius, 1775)

Material examined – Northern gov., Tannourine env., 2 km N Harissa, Tannourine Cedars Nat. Reserve, 34°12'34"N, 35°55'45"E, 1750 m, 23.V.2015, leg. OA, MB, AM, NN, TN, MR, WY (1); Northern gov., Ehden, Horsh Ehden Natural Reserve, swept, 34°18'33"N, 35°59'14"E, 1525 m, 21.V.2015, leg. MB, AM, TN (1).

Aspidapion radiolus (Marsham, 1802)

Material examined – Northern gov., Tannourine env., 2 km N Harissa, Tannourine Cedars Nat. Reserve, swept & hand collected, 34°12'34"N, 35°55'45"E, 1750 m, 23.V.2015, 16.VI.2016, leg. OA, MB, AM, NN, MR, WY, AK, PN, TN (2); Bcharre env., Quadisha Valley, swept & hand collected, 34°14'57"N, 35°58'34"E, 970 m, 23.VI.2016, leg. AK, TN, WY (1).

Aspidapion validum (Germar, 1817)

Material examined – Northern gov., Bcharre env., Quadisha Valley, swept & beaten, 34°14'57"N, 35°58'34"E, 970 m, 5.V.2017, leg. AK, PN, TN, CT (7); Tannourine El Tahta, macchia, beaten & netted from canopy, 34°12'46.84"N, 35°52'26.40"E, 960 m, 10.V.2017, leg. AK, TN, CT (1); Tannourine env., 2 km N Harissa, Tannourine Cedars Nat. Reserve, 34°12'34"N, 35°55'45"E, 1750 m, 23.V.2015, leg. OA, MB, AM, NN, TN, MR, WY (2).

Remark – First records for Lebanon.

Ceratapion gibbirostre (Gyllenhal, 1813)

Material examined – Northern gov., Tannourine env., 2 km N Harissa, Fuvar, stream valley, at light, 34°12'22"N, 35°55'17"E, 1460 m, 27.VI.2016, leg. AK, PN, TN (1); Tannourine env., 2 km N Harissa, Tannourine Cedars Nat. Reserve, 34°12'34"N, 35°55'45"E, 1750 m, 23.V.2015, leg. OA, MB, AM, NN, TN, MR, WY (1); Tannourine Cedars, 19.VIII.2006, leg. NN (1).

Ceratapion klapperichi Wanat, 1995

Material examined – Northern gov., Tannourine env., 2 km N Harissa, Tannourine Cedars Nat. Reserve, 34°12'34"N, 35°55'45"E, 1750 m, 24.VII.2018, leg. PN, TN, (1).

Remark – First record for Lebanon.

Euprotapion kuenburgorum (Reitter, 1898)

(Fig. 9)

Material examined – Northern gov., Tannourine env., 2 km N Harissa, Tannourine Cedars Nat. Reserve, 34°12'28.75"N; 35°56'5.01"E, 1802 m, hand collected & swept, 1.V.2017, 10.V.2017, leg. AK, PN, TN (2).

Remark – First record for Lebanon.

Eutrichapion punctiger (Paykull, 1792)

Material examined – Northern gov., Tourza, shrubs, hand collected, 34°16'34"N, 35°53'54"E, 600 m, 19.V.2015, leg. AM, TN (1).

Remark – First record for Lebanon.

Holotrichapion ononis (Kirby, 1808)

Material examined – Northern gov., Bcharre env., 1 km E Ariz, Horsh Arz el-Rab, ancient *Cedrus* forest, swept & hand collected, 34°14'39"N, 36°2'56"E, 1900 m, 22.V.2015, leg. TN, MR, WY (1); Bcharre env., 1 km E Ariz, Horsh Arz el-Rab, ancient *Cedrus* forest, swept & hand collected, 34°14'39"N, 36°2'56"E, 1900 m, 29.VII.2018, leg. PN, TN, WY (1).

Remark – First records for Lebanon.

Malvapion malvae (Fabricius, 1775)

Material examined – Northern gov., Bcharre env., Quadisha Valley, swept & beaten, 34°14'57"N, 35°58'34"E, 970 m, 5.V.2017, leg. AK, PN, TN, CT (1).

Remark – First record for Lebanon.

Oryxolaemus scabiosus (Weise, 1889)

Material examined – Northern gov., Tannourine El Tahta, macchia, beaten & netted from canopy, 34°12'46.84"N, 35°52'26.40"E, 960 m, 10.V.2017, leg. AK, TN, CT (1); Bcharre env., 1 km E Ariz, Horsh Arz el-Rab, ancient *Cedrus* forest, 34°14'33"N, 36°2'59"E, 1900 m, 20.V.2015, leg. AM, TN (1).

Remark – First records for Lebanon.

Oxystoma ochropus (Germar, 1818)

Material examined – Northern gov., Bcharre env., Quadisha Valley, swept & hand collected, 34°14'57"N, 35°58'34"E, 970 m, 23.VI.2016, leg. AK, TN, WY (3).

Remark – First record for Lebanon.

Phrissotrichum tubiferum (Gyllenhal, 1833)

Material examined – Northern gov., Bcharre env., Quadisha Valley, beaten & netted from canopy, 34°14'57"N, 35°58'34"E, 970 m, 5.V.2017, leg. AK, PN, TN, CT (2); same but 10.V.2017 (3); Tannourine env., 2 km N Harissa, Tannourine Cedars Nat. Reserve, swept & hand collected, 34°12'34"N, 35°55'45"E, 1750 m, 1.V.2017, leg. AK, PN, TN (1).

Remark – First records for Lebanon.

Protapion nigrিতarse (Kirby, 1808)

Material examined – Northern gov., 6 km NE Batroun, Barhalioun, macchia, hand collected, 34°15.919'N, 35°52.724'E, 1060 m, 2.V.2017, leg. MB, AK, PN, TN (1).

Remark – First record for Lebanon.

Pseudoperapion brevirostre (Herbst, 1797)

Material examined – Northern gov., Tannourine env., 2 km N Harissa, Fuvar, stream valley, swept & beaten, 34°12'22"N, 35°55'17"E, 1460 m, 17.VI.2016, leg. AK, PN, TN (1).

Remark – First record for Lebanon.

Pseudoprotapion ergenense (Becker, 1864)

Material examined – Northern gov., Bcharre env., 4 km E Ariz, hand collected, 34°14.645'N, 36°5.166'E, 2830 m, 24.VI.2016, leg. MB, AK, PN, TN, MR, WY (1).

Remark – First record for Lebanon.

Rhopalapion longirostre (Olivier, 1807)

Material examined – Northern gov., Tannourine env., 2 km N Harissa, Tannourine Cedars Nat. Reserve, swept & hand collected, 34°12'34"N, 35°55'45"E, 1750 m, 28.VI.2016, leg. AK, PN, TN (2); same but 23.V.2015, leg. OA, MB, AM, NN, TN, MR, WY (1); same but 25.VII.2018, leg. PN, TN (2); Tannourine El Tahta, macchia, swept & hand collected, 34°12'46.84"N, 35°52'26.40"E, 960 m, 3.V.2017, leg. MB, AK, PN, TN (1); Mount Lebanon gov., Arsoun, 2.V.2016, leg. NN (2).

Family CURCULIONIDAE Latreille, 1802 s.l.

Subfamily Brachycerinae Billberg, 1820

Tribe Brachycerini Billberg, 1820

Brachycerus aegyptiacus Olivier, 1807

(Fig. 3)

Material examined – Northern gov., 6 km NE Batroun, Barhalioun, macchia, hand collected, 34°15.919'N, 35°52.724'E, 1060 m, 2.V.2017, leg. MB, AK, PN, TN (1); Ehden, S to Horsh Ehden Natural Reserve, from beneath stones, 34°18'33"N, 35°59'14"E, 1895 m, 4.V.2017, leg. MB, AK, PN, TN, CT (1); 2 km N Harissa, Tannourine Cedars Nat. Reserve, hand collected, 34°12'34"N, 35°55'45"E, 1750 m, V–VII.2018, leg. CT (2); same but 23.V.2015, leg. OA, MB, AM, NN, TN, MR, WY (1); Mount Lebanon gov., Beit Chabab, suburb, 16.VI.2013, leg. WY (1).

Remark – First records for Lebanon.

Brachycerus hermoniacus Friedman et Sagiv, 2011

Material examined – Northern gov., Bcharre env., 4 km SE Ariz, hand collected at snow banks, 34°14'6.53"N, 36°3'33.94"E, 2100 m, 22.V.2015, leg. AM, TN, MR, WY (1); Res. Nat. des Cedres de Tannourine, 20.VIII.2011, leg. NN (1).

Brachycerus junix Lichtenstein, 1796

Material examined – Tannourine, 24.IV.2016, leg. NN (1).

Subfamily Conoderinae Schoenherr, 1833

Tribe Baridini Schoenherr, 1836

Malvaevora timida (Rossi, 1792)

Material examined – Northern gov., Tannourine El Tahta, macchia, swept & hand collected, 34°12'46.84"N, 35°52'26.40"E, 960 m, 3.V.2017, leg. MB, AK, PN, TN (3); Tannourine env., 2 km N Harissa, Fuvar, stream valley, swept & beaten, 34°12'22"N, 35°55'17"E, 1460 m, 17.VI.2016, leg. AK, PN, TN (4); same but at light, 27.VI.2016, leg. AK, PN, TN (1); Bcharre env., 4 km SE Ariz, hand collected at snow banks, 34°12'41"N, 36°3'34"E, 2570 m, 20.V.2015, leg. AM, TN (2); Mount Lebanon Range, Kfar Hay, Mar Youanna Maroun, macchia, swept & hand collected, 34°14'47.69"N, 35°45'1.02"E, 322 m, 3.V.2017, leg. MB, AK, PN, TN (1); Arsoun, 2.V.2016, leg. NN (1); Bekaa valley, Terbol, Icarda, 20.IV.2018, leg. WY (1).

Remark – First records for Lebanon.

Tribe Ceutorhynchini Gistel, 1848

Ceutorhynchus chalybaeus Germar, 1823

Material examined – Northern gov., Bcharre env., 1 km E Ariz, Horsh Arz el-Rab, ancient *Cedrus* forest, 34°14'33"N, 36°2'59"E, 1900 m, 20.V.2015, leg. AM, TN (1).

Remark – First record for Lebanon.

Ceutorhynchus pallidactylus (Marsham, 1802)

Material examined – Northern gov., Tannourine El Tahta, macchia, beaten & netted from canopy, 34°12'46.84"N, 35°52'26.40"E, 960 m, 10.V.2017, leg. AK, TN, CT (1).

Ceutorhynchus sulcicollis (Paykull, 1800)

Material examined – Tannourine El Tahta, macchia, swept & hand collected, 34°12'46.84"N, 35°52'26.40"E, 960 m, 3.V.2017, leg. MB, AK, PN, TN (1); , Mount Lebanon Range, Kfar Hay, Mar Youanna Maroun, macchia, swept & hand collected, 34°14'47.69"N, 35°45'1.02"E, 322 m, 3.V.2017, leg. MB, AK, PN, TN (1).

Remark – First records for Lebanon.

Coeliodes ilicis (Bedel, 1885)

Material examined – Mount Lebanon Range, Kfar Hay, Mar Youanna Maroun, macchia, swept & hand collected, 34°14'47.69"N, 35°45'1.02"E, 322 m, 3.V.2017, leg. MB, AK, PN, TN (2).

Remark – First record for Lebanon.

Coeliodes proximus Schultze, 1895

Material examined – Northern gov., Tannourine env., 2 km N Harissa, Tannourine Cedars Nat. Reserve, swept & hand collected, 34°12'34"N, 35°55'45"E, 1750 m, 19.VI.2016, leg. AK, PN, TN (1).

Remark – First record for Lebanon.

Ethelcus verrucatus (Gyllenhal, 1837)

Material examined – Northern gov., Bcharre env., 1 km E Ariz, Horsh Arz el-Rab, ancient *Cedrus* forest, 34°14'33"N, 36°2'59"E, 1900 m, 20.V.2015, leg. AM, TN (2).

Remark – First record for Lebanon.

Glocianus distinctus (C. N. F. Brisout de Barneville, 1870)

Material examined – Northern gov., Bcharre env., 1 km E Ariz, Horsh Arz el-Rab, ancient *Cedrus* forest, 34°14'33"N, 36°2'59"E, 1900 m, 20.V.2015, leg. AM, TN (2).

Remark – First record for Lebanon.

Glocianus sericellus (Schultze, 1900)
(Fig. 10)

Material examined – Northern gov., Bcharre env., 1 km E Ariz, Horsh Arz el-Rab, ancient *Cedrus* forest, swept & hand collected, 34°14'33"N, 36°2'59"E, 1900 m, 22.V.2015, leg. AM, TN, MR, WY (1).

Pseudocoeliodes rubricus Gyllenhal, 1837

Material examined – Northern gov., Tannourine El Tahta, macchia, beaten, 34°12'46.84"N, 35°52'26.40"E, 960 m, 10.V.2017, leg. AK, TN, CT (1).

Sirocalodes mixtus (Mulsant et Rey, 1859)

Material examined – Northern gov., Tannourine env., 2 km N Harissa, Tannourine Cedars Nat. Reserve, 34°12'34"N, 35°55'45"E, 1750 m, 23.V.2015, leg. OA, MB, AM, NN, TN, MR, WY (1).

Remark – First record for Lebanon.

Thamiocolus uniformis (Gyllenhal, 1837)

Material examined – Northern gov., Tannourine El Tahta, macchia, swept & hand collected, 34°12'46.84"N, 35°52'26.40"E, 960 m, 3.V.2017, leg. MB, AK, PN, TN (1); Bcharre env., Quadisha Valley, swept & hand collected, 34°14'57"N, 35°58'34"E, 970 m, 23.VI.2016, leg. AK, TN, WY (1).

Remark – First records for Lebanon.

Zacladus exiguus (Olivier, 1807)

Material examined – Mount Lebanon Range, Aintoura, Bkerki Valley, 33°57'52.15"N, 35°38'15.95"E, swept & beaten, 8.V.2017, leg. AK, PN, TN (1).

Remark – First record for Lebanon.

Subfamily Cossoninae Schoenherr, 1825

Tribe Cossonini Schoenherr, 1825

Mesites pallidipennis Boheman, 1838

Material examined – Northern gov., Bcharre env., Quadisha Valley, swept & beaten, 34°14'57"N, 35°58'34"E, 970 m, 28.VII.2018, leg. PN, TN, WY (1).

Tribe Rhyncolini Gistel, 1848

Brachytemnus porcatatus (Germar, 1824)

Material examined – Ehden, Horsh Ehden Natural Reserve, swept & hand collected, 34°18'25"N, 35°59'6"E, 2.VIII.2018, leg. PN, TN (4).

Rhyncolus elongatus (Gyllenhal, 1827)

Material examined – Northern gov., Ehden, Horsh Ehden Natural Reserve, from beneath bark, 34°18'33"N, 35°59'14"E, 1525 m, 21.V.2015, leg. MB, AM, TN (5).

Remark – First record for Lebanon.

Rhyncolus punctatulus Boheman, 1838

Material examined – Northern gov., Bcharre env., Quadisha Valley, *ex* larva from *Ficus carica*, 34°14'57"N, 35°58'34"E, 970 m, 22.VI.2016–10.IV.2017, leg. MB, AK, PN, TN, WY (1).

Remark – First record for Lebanon.

Rhyncolus syriacus Desbrochers des Loges, 1892

(Fig. 11)

Material examined – Mount Lebanon Range, Arsoun, *Pinus* forest, from *Tomicus* pheromone trap, 33°51'8.03"N, 35°41'44.36"E, 7.V.2017, leg. AK, PN, TN (1).

Remark – First record for Lebanon.

Subfamily Curculioninae Latreille, 1802

Tribe Rhynchophorini Schoenherr, 1833

Rhynchophorus ferrugineus (Olivier, 1790)

Material examined – Baalbek-Hermel gov., Hazerta, 33°50'56"N, 35°53'0.5"E; 10.III.2018, leg. WY (1).

Remark – First record for Lebanon.

Sitophilus kakourisi Alziar et Colonnelli, 2009

Material examined – Northern gov., Tannourine El Tahta, pitfall trap, 34°12'37.12"N, 35°52'32.57"E, 930 m, 3–11.V.2017, leg. MB, AK, PN, TN (8); Ehden, Horsh Ehden Natural Reserve, upper gate, mixed forest, sifted, 34°18'15.38"N, 35°59'2.66"E, 1600 m, 4.V.2017, leg. MB, AK, PN, TN, CT (1).

Remark – First records for Lebanon.

Tribe Anthonomini C. G. Thomson, 1859

Anthonomus pedicularius (Linnaeus, 1758)

Material examined – Northern gov., Ehden, Horsh Ehden Natural Reserve, swept & hand collected, 34°18'33"N, 35°59'14"E, 1525 m, 19.VI.2016, leg. AK, PN, TN (1).

Remark – First record for Lebanon.

Anthonomus stierlini Desbrochers des Loges, 1869

Material examined – Northern gov., Tannourine env., 2 km N Harissa, Tannourine Cedars Nat. Reserve, 34°12'34"N, 35°55'45"E, 1750 m, 23.V.2015, leg. OA, MB, AM, NN, TN, MR, WY (3).

Bradybatus delagrangei Desbrochers des Loges, 1892

(Fig. 12)

Material examined – Northern gov., Tannourine env., 2 km N Harissa, Tannourine Cedars Nat. Reserve, sifted from leaf litter, 34°12'34"N, 35°55'45"E, 1750 m, 6.V.2017, leg. AK, PN, TN (6).

Remark – First record for Lebanon.

Bradybatus nemethi Košťál, 2018

Material examined – Northern gov., Tannourine env., 2 km N Harissa, Tannourine Cedars Nat. Reserve, swept & hand collected, 34°12'34"N, 35°55'45"E, 1750 m, 1.V.2017, leg. AK, PN, TN (holotype and 6 paratypes); Tannourine env., 2 km N Harissa, Tannourine Cedars Nat. Reserve, 34°12'28.75"N; 35°56'5.01"E, 1802 m, hand collected & swept, 10.V.2017, leg. AK, PN, TN (2 paratypes); Tannourine env., 2 km N Harissa, Tannourine Cedars Nat. Reserve, swept & hand collected, 34°12'34"N, 35°55'45"E, 1750 m, 23.V.2015, leg. OA, MB, AM, NN, TN, MR, WY (1 paratype).

Bradybatus schoenmanni Košťál, 2018

Material examined – Northern gov., Bcharre env., Quadisha Valley, beaten & netted from canopy, 34°14'57"N, 35°58'34"E, 970 m, 10.V.2017, leg. AK, PN, TN, CT (1 paratype).

Tribe Cionini Schoenherr, 1825
Cionus hortulanus (Geoffroy, 1785)

Material examined – Northern gov., Tannourine env., 2 km N Harissa, Tannourine Cedars Nat. Reserve, 34°12'34"N, 35°55'45"E, 1750 m, 23.V.2015, leg. OA, MB, AM, NN, TN, MR, WY (9).

Remark – First record for Lebanon.

Cionus scrophulariae (Linnaeus, 1758)

Material examined – Northern gov., Tannourine env., 2 km N Harissa, Tannourine Cedars Nat. Reserve, 34°12'28.75"N; 35°56'5.01"E, 1802 m, 10.V.2017, leg. AK, PN, TN (2).

Tribe Curculionini Latreille, 1802
Archarius pyrrhoceras (Marsham, 1802)

Material examined – Northern gov., Bcharre env., 1 km E Ariz, Horsh Arz el-Rab, ancient *Cedrus* forest, swept & hand collected, 34°14.494'N, 36°2.884'E, 1900 m, 20–22. V.2015, 9.V.2017, leg. AK, AM, PN, TN, MR, CT, WY (7); Tannourine env., 2 km N Harissa, Tannourine Cedars Nat. Reserve, sifted from leaf litter, 34°12'34"N, 35°55'45"E, 1750 m, 23.V.2015, 6.V.2017, leg. AK, PN, TN, OA, MB, AM, NN, MR, WY (2); Tannourine El Tahta, macchia, beaten & netted from canopy, 34°12'46.84"N, 35°52'26.40"E, 960 m, 10.V.2017, leg. AK, TN, CT (1); Ehden, Horsh Ehden Natural Reserve, swept, 34°18'33"N, 35°59'14"E, 1525 m, 21.V.2015, leg. MB, AM, TN (1).

Remark – First records for Lebanon.

Curculio glandium Marsham, 1802

Material examined – Northern gov., Tannourine env., 2 km N Harissa, Tannourine Cedars Nat. Reserve, swept & hand collected, 34°12'34"N, 35°55'45"E, 1750 m, 1.V.2017, leg. AK, PN, TN (5); same but 23.V.2015,

leg. OA, MB, AM, NN, TN, MR, WY (2); Mount Lebanon Range, Arsoun, *Pinus* forest, 33°51'8.03"N, 35°41'44.36"E, X.2016, leg. NN (1).

Remark – First records for Lebanon.

Curculio muchei Voss, 1962

(Fig. 13)

Material examined – Northern gov., Bcharre env., Quadisha Valley, swept & beaten, 34°14'57"N, 35°58'34"E, 970 m, 5.V.2017, leg. AK, PN, TN, CT (1); same but beaten & netted from canopy, 10.V.2017, leg. AK, PN, TN, CT (1).

Remark – First records for Lebanon.

Curculio venosus venosus (Gravenhorst, 1807)

Material examined – Northern gov., Tannourine env., 2 km N Harissa, Fuvar, stream valley, swept & beaten, 34°12'22"N, 35°55'17"E, 1460 m, 17.VI.2016, leg. AK, PN, TN (1).

Remark – First record for Lebanon.

Tribe Mecinini Gistel, 1848

Cleopomiarus medius (Desbrochers des Loges, 1893)

Material examined – Northern gov., Bcharre env., Quadisha Valley, beaten & netted from canopy, 34°14'57"N, 35°58'34"E, 970 m, 10.V.2017, leg. AK, PN, TN, CT (15); same but swept, 27.V.2015, leg. MB, AM, TN, MR (2); 6 km NE Batroun, Barhalioun, macchia, hand collected, 34°15.919'N, 35°52.724'E, 1060m, 2.V.2017, leg. MB, AK, PN, TN (1); Tannourine El Tahta, macchia, beaten & netted from canopy, 34°12'46.84"N, 35°52'26.40"E, 960 m, 10.V.2017, leg. AK, TN, CT (1); Tannourine env., 2 km N Harissa, Fuvar, stream valley, swept & beaten, 34°12'22"N, 35°55'17"E, 1460 m, 17.VI.2016, leg. AK, PN, TN (3).

Remark – First records for Lebanon.

Gymnetron rotundicolle Gyllenhal, 1838

Material examined – Northern gov., Tannourine El Tahta, pitfall trap, 34°12'37.12"N, 35°52'32.57"E, 930 m, 3–11.V.2017, leg. MB, AK, PN, TN (1).

Remark – First record for Lebanon.

Mecinus caucasicus (Reitter, 1907)

Material examined – Mount Lebanon Range, Kfar Hay, Mar Youanna Maroun, macchia, swept & hand collected, 34°14'47.69"N, 35°45'1.02"E, 322 m, 3.V.2017, leg. MB, AK, PN, TN (2); Northern gov., Bcharre env., Quadisha Valley, beaten & netted from canopy, 34°14'57"N, 35°58'34"E, 970 m, 10.V.2017, leg. AK, PN, TN, CT (1).

Remark – First records for Lebanon.

Miarus stoeckleini Franz, 1947

Material examined – Mount Lebanon Range, Kfar Hay, Mar Youanna Maroun, macchia, swept & hand collected, 34°14'47.69"N, 35°45'1.02"E, 322 m, 3.V.2017, leg. MB, AK, PN, TN (2); Northern gov., Bcharre env., 4 km E Ariz, hand collected, 34°14.645'N, 36°5.166'E, 2830 m, 24.VI.2016, leg. MB, AK, PN, TN, MR, WY (1).

Remark – First records for Lebanon.

Rhinusa asellus (Gravenhorst, 1807)

Material examined – Northern gov., 6 km NE Batroun, Barhalioun, macchia, hand collected, 34°15.919'N, 35°52.724'E, 1060 m, 2.V.2017, leg. MB, AK, PN, TN (1).

Remark – First record for Lebanon.

Rhinusa bipustulata (Rossi, 1792)

Material examined – Northern gov., Tannourine env., 2 km N Harissa, Tannourine Cedars Nat. Reserve, 34°12'28.75"N; 35°56'5.01"E, 1802 m, hand collected & swept, 10.V.2017, leg. AK, PN, TN (7); Bcharre env., Quadisha Valley, beaten & netted from canopy, 34°14'57"N, 35°58'34"E, 970 m, 10.V.2017, leg. AK, PN, TN, CT (1); Tannourine El Tahta, macchia, beaten & netted from canopy, 34°12'46.84"N, 35°52'26.40"E, 960 m, 10.V.2017, leg. AK, TN, CT (1).

Rhinusa emmrichi (Bajtenov, 1979)

Material examined – Mount Lebanon Range, Kfar Hay, Mar Youanna Maroun, macchia, swept & hand collected, 34°14'47.69"N, 35°45'1.02"E, 322 m, 3.V.2017, leg. MB, AK, PN, TN (1).

Rhinusa tetra (Fabricius, 1792)

Material examined – Northern gov., Tannourine env., 2 km N Harissa, Tannourine Cedars Nat. Reserve, 34°12'28.75"N; 35°56'5.01"E, 1802 m, hand collected & swept, 10.V.2017, leg. AK, PN, TN (4); Ehden, Horsh Ehden Natural Reserve, swept, 34°18'33"N, 35°59'14"E, 1525 m, 21.V.2015, leg. MB, AM & TN (8); Bcharre env., 4 km SE Ariz, hand collected at snow banks, 34°12'41"N, 36°3'34"E, 2570 m, 20.V.2015, leg. AM, TN (1).

Tribe Tychiini C. G. Thomson, 1859

Sibinia femoralis Germar, 1823

Material examined – Northern gov., Tannourine El Tahta, macchia, beaten & netted from canopy, 34°12'46.84"N, 35°52'26.40"E, 960 m, 10.V.2017, leg. AK, TN, CT (1).

Sibinia subelliptica Desbrochers des Loges, 1873

Material examined – Northern gov., Bcharre env., Quadisha Valley, swept & beaten, 34°14'57"N, 35°58'34"E, 970 m, 28.VII.2018, leg. PN, TN, WY (1).

Remark – First record for Lebanon.

Tychius cuprifer (Panzer, 1799)

Material examined – Northern gov., 6 km NE Batroun, Barhalioun, macchia, hand collected, 34°15.919'N, 35°52.724'E, 1060 m, 2.V.2017, leg. MB, AK, PN, TN (2).

Tychius longinasus Desbrochers des Loges, 1907

(Fig. 14)

Material examined – Northern gov., Bcharre env., Quadisha Valley, swept & beaten, 34°14'57"N, 35°58'34"E, 970 m, 5.V.2017, leg. AK, PN, TN, CT (1).

Remark – First record for Lebanon.

Tychius ruficornis Tournier, 1874

(Fig. 15)

Material examined – Northern gov., 6 km NE Batroun, Barhalioun, macchia, hand collected, 34°15.919'N, 35°52.724'E, 1060 m, 2.V.2017, leg. MB, AK, PN, TN (1).

Remark – First record for Lebanon.

Tychius striatulus Gyllenhal, 1835

Material examined – Northern gov., Tannourine env., 2 km N Harissa, Fuvar, stream valley, swept & beaten, 34°12'22"N, 35°55'17"E, 1460 m, 17.VI.2016, leg. AK, PN, TN (3); Tannourine, 12.VI.2016, leg. NN (1).

Subfamily Entiminae Schoenherr, 1823

Tribe Brachyderini Schoenherr, 1826

Caulostrophus obsoletehispidus (Lucas, 1854)

Material examined – Mount Lebanon Range, Beit Meri, *Pinus pinea* ecosyst., 27.VIII.1997, leg. NN (1).

Remark – First record for Lebanon.

Strophomorphus brevisculus (Marseul, 1868)

Material examined – Northern gov., Bcharre env., 2 km E Ariz, Horsh Arz el-Rab, hand collected & from beneath stones, 34°14'5.56"N, 36°3'39.18"E, 2150 m, 9.V.2017, leg. AK, PN, TN, CT (1); 1 km E Tannourine El Tahta, *Platanus* grove, swept & hand collected, 34°12'44"N, 35°53'14"E, 31.VII.2018, leg. PN, TN, WY (1); Bcharre distr., Quadisha Valley, swept & beaten, 34°14'57"N, 35°58'34"E, 970 m, 28.VII.2018, leg. PN, TN, WY (1); Bcharre, suburb, 34°15'9"N, 36°0'33"E, 31.VII.2018, leg. PN, TN, WY (1).

Strophomorphus ctenotus Desbrochers des Loges, 1875

Material examined – Northern gov., Tannourine env., 2 km N Harissa, Tannourine Cedars Nat. Reserve, from beneath stones, 34°12'34"N, 35°55'45"E, 1750 m, 26.VI.2016, leg. AK, PN, TN (1).

Strophomorphus libanicus Desbrochers des Loges, 1875

Material examined – Northern gov., Bcharre env., 4 km E Ariz, hand collected, 34°14.645'N, 36°5.166'E, 2830 m, 24.VI.2016, leg. MB, AK, PN, TN, MR, WY (4); Bcharre env., 4 km SE Ariz, hand collected, 34°14'6.53"N, 36°3'33.94"E, 2100 m, 20.VI.2016, leg. MB, AK, PN, TN (3); 6km W Tannourine, "Tann. uplands", hand collected, 34°12'30"N, 36°0'27"E, 26.VII.2018, leg. PN, TN (19).

Strophomorphus sublaevigatus Desbrochers des Loges, 1875

Material examined – Mount Lebanon Range, Salima, *Pinus pinea* ecosyst., 27.VIII.1997, leg. NN (1).

Tribe Holcorhinini Desbrochers des Loges, 1898

Eptacus arachnoides (Stierlin, 1861)

Material examined – Northern gov., Bcharre env., 2 km E Ariz, Horsh Arz el-Rab, hand collected & from beneath stones, 34°14'5.56"N, 36°3'39.18"E, 2150 m, 9.V.2017, leg. AK, PN, TN, CT (1); Bcharre env., 4 km E Ariz, hand collected, 34°14.645'N, 36°5.166'E, 2830 m, 24.VI.2016, leg. MB, AK, PN, TN, MR, WY (19) (4); Bcharre env., 4 km SE Ariz, hand collected, 34°14'6.53"N, 36°3'33.94"E, 2100 m, 20.VI.2016, leg. MB, AK, PN, TN (12) (1); same but hand collected at snow banks, 22.V.2015, leg. AM, TN, MR, WY (1); 6 km W Tannourine, "Tann. uplands", hand collected, 34°12'30"N, 36°0'27"E, 26.VII.2018, leg. PN, TN (44).

Tribe Otiorhynchini Schoenherr, 1826

Otiorhynchus armadillo (Rossi, 1792)

Material examined – Mount Lebanon, gov., Beit Chabab, suburb, V.2015, leg. WY (1).

Remark – First record for Lebanon.

Otiorhynchus balcanicus Stierlin, 1861

Material examined – Mount Lebanon Range, Arsoun, *Pinus* forest, from *Tomicus* pheromone trap, 33°51'8.03"N, 35°41'44.36"E, X.2016, leg. NN (1).

Remark – First record for Lebanon.

Otiorhynchus carcelii Gyllenhal, 1842

Material examined – Northern gov., Tannourine El Tahta, macchia, swept & hand collected, 34°12'46.84"N, 35°52'26.40"E, 960 m, 3.V.2017, leg. MB, AK, PN, TN (1).

Otiorhynchus coyeyi Marseul, 1868

Material examined – Northern gov., Bcharre env., 2 km E Ariz, Horsh Arz el-Rab, hand collected & from beneath stones, 34°14'5.56"N, 36°3'39.18"E, 2150 m, 9.V.2017, leg. AK, PN, TN, CT (12); Ehden, S to Horsh Ehden Natural Reserve, from beneath stones, 34°18'33"N, 35°59'14"E, 1895 m, 4.V.2017, leg. MB, AK, PN, TN, CT (7); Tannourine env., 2 km N Harissa, Tannourine Cedars Nat. Reserve, swept & hand collected, 34°12'34"N, 35°55'45"E, 1750 m, 1.V.2017, leg. AK, PN, TN (3); 6 km NE Batroun, Barhalioun, macchia, hand collected, 34°15.919'N, 35°52.724'E, 1060 m, 2.V.2017, leg. MB, AK, PN, TN (1); Tannourine El Tahta, macchia, swept & hand collected, 34°12'46.84"N, 35°52'26.40"E, 960 m, 3.V.2017, leg. MB, AK, PN, TN (1); Bcharre env., 4 km SE Ariz, hand collected, 34°14'6.53"N, 36°3'33.94"E, 2100 m, 20.VI.2016, leg. MB, AK, PN, TN (12) (1); same but hand collected at snow banks, 22.V.2015, leg. AM, TN, MR, WY (6); Bcharre env., 4 km SE Ariz, hand collected at snow banks, 34°12'41"N, 36°3'34"E, 2570 m, 20.V.2015, leg. AM, TN (5); Bcharre env., 1 km E Ariz, Horsh Arz el-Rab, ancient *Cedrus* forest, swept & hand collected, 34°14'33"N, 36°2'59"E, 1900 m, 22.V.2015, leg. AM, TN, MR, WY (1).

Remark – First records for Lebanon.

Otiorhynchus dorsogranatus Magnano, 2010

Material examined – Northern gov., Tannourine env., 2 km N Harissa, Tannourine Cedars Nat. Reserve, swept & hand collected, 34°12'34"N, 35°55'45"E, 1750 m, 25.VII.2018, leg. PN, TN (2).

Remark – First record for Lebanon. Described from Turkey (MAGNANO 2010), however it was not mentioned in ALONSO-ZARAZAGA *et al.* (2017).

Otiorhynchus heinzorum Braun, 2002

Material examined – Northern gov., Tannourine env., 2 km N Harissa, Tannourine Cedars Nat. Reserve, swept & hand collected, 34°12'34"N, 35°55'45"E, 1750 m, 1.V.2017, leg. AK, PN, TN (1); Bcharre env., 4 km SE Ariz, hand collected, 34°14'6.53"N, 36°3'33.94"E, 2100 m, 20.VI.2016, leg. MB, AK, PN, TN (1); Bcharre env., 4 km E Ariz, hand collected, 34°14.645'N, 36°5.166'E, 2830 m, 24.VI.2016, leg. MB, AK, PN, TN, MR, WY (7).

Otiorhynchus kindermanni Stierlin, 1861

Material examined – Northern gov., Bcharre env., 4 km E Ariz, hand collected, 34°14.645'N, 36°5.166'E, 2830 m, 24.VI.2016, leg. MB, AK, PN, TN, MR, WY (8); Tannourine, 30.VI.2016, leg. NN (3); Bcharre env., 4 km SE Ariz, hand collected at snow banks, 34°12'41"N, 36°3'34"E, 2570 m, 20.V.2015, leg. AM, TN (3).

Otiorhynchus leuthneri Smreczyński, 1977

Material examined – Mount Lebanon Range, Arsoun, *Pinus* forest, from *Tomicus* pheromone trap, 33°51'8.03"N, 35°41'44.36"E, X.2016, leg. NN (1).

Remark – First record for Lebanon.

Otiorhynchus minutegranulatus Magnano, 1999
(Fig. 16)

Material examined – Mount Lebanon Range, Arsoun, 2.V.2016, leg. NN (1).

Remark – First record for Lebanon.

Otiorhynchus nitidus Reiche et Saulcy, 1858
(Fig. 17)

Material examined – Northern gov., Bcharre env., 4 km E Ariz, hand collected, 34°14.645'N, 36°5.166'E, 2830 m, 24.VI.2016, 20.VI.2016, leg. MB, AK, PN, TN, MR, WY (18), (2); Bcharre env., 4 km SE Ariz, hand collected at snow banks, 34°14'6.53"N, 36°3'33.94"E, 2100 m, 22.V.2015, leg. AM, TN, MR, WY (2).

Remark – First records for Lebanon.

Otiorhynchus ovalipennis Boheman, 1842

Material examined – Northern gov., Bcharre env., Quadisha Valley, swept & beaten, 34°14'57"N, 35°58'34"E, 970 m, 5.V.2017, leg. AK, PN, TN, CT (12); same but swept & beaten, 28.VII.2018, leg. PN, TN, WY (3); same but swept, 27.V.2015, leg. MB, AM, TN, MR (2); same but swept & hand collected, 23.VI.2016, leg. AK, TN, WY (5); same but beaten & netted from canopy, 10.V.2017, leg. AK, PN, TN, CT (2); Ehden, Horsh Ehden Natural Reserve, upper gate, mixed forest, sifted, 34°18'15.38"N, 35°59'2.66"E, 1600 m, 4.V.2017, leg. MB, AK, PN, TN,

CT (5); Tannourine env., 2 km N Harissa, Fuvar, stream valley, swept & beaten, 34°12'22"N, 35°55'17"E, 1460 m, 17.VI.2016, leg. AK, PN, TN (6); Tannourine env., 2 km N Harissa, Tannourine Cedars Nat. Reserve, 34°12'34"N, 35°55'45"E, 1750 m, 23.V.2015, leg. OA, MB, AM, NN, TN, MR, WY (1); Bcharre, suburb, 34°15'9"N, 36°0'33"E, 31.VII.2018, leg. PN, TN, WY (11); 1 km E Tannourine El Tahta, *Platanus* grove, swept & hand collected, 34°12'44"N, 35°53'14"E, 31.VII.2018, leg. PN, TN, WY (1); Akkar gov., Fnaidek, *Quercus* forest, hand collected, 34°28'19"N, 36°12'28"E, 3.VIII.2018, leg. PN, TN, CT (1); Mount Lebanon Range, Arsoun, 2.V.2016, leg. NN (1).

Remark – First records for Lebanon.

Otiorhynchus schuhmacheri Stierlin, 1883

(Fig. 18)

Material examined – Northern gov., Bcharre env., Quadisha Valley, swept & beaten, 34°14'57"N, 35°58'34"E, 970 m, 5.V.2017, leg. AK, PN, TN, CT (6); same but swept, 27.V.2015, leg. MB, AM, TN, MR (1); same but swept & hand collected, 23.VI.2016, leg. AK, TN, WY (2); same but swept & beaten, 28.VII.2018, leg. PN, TN, WY (1); Ehden, Horsh Ehden Natural Reserve, upper gate, mixed forest, sifted, 34°18'15.38"N, 35°59'2.66"E, 1600 m, 4.V.2017, leg. MB, AK, PN, TN, CT (10); Tannourine env., 2 km N Harissa, Tannourine Cedars Nat. Reserve, pitfall trap, 34°12'34"N, 35°55'45"E, 1750 m, 1–6.V.2017, leg. AK, PN, TN (1); same but from beneath stones, 26.VI.2016, leg. AK, PN, TN (1); Bcharre, suburb, 34°15'9"N, 36°0'33"E, 31.VII.2018, leg. PN, TN, WY (1).

Tribe Phyllobiini Schoenherr, 1826

Dichorhynchus pseudoscythropus Desbrochers des Loges, 1875

Material examined – Northern gov., Tannourine env., 2 km N Harissa, Tannourine Cedars Nat. Reserve, swept & hand collected, 34°12'34"N, 35°55'45"E, 1750 m, 18.VI.2016, leg. AK, PN, TN (2); Bcharre env., Quadisha Valley, beaten & netted from canopy, 34°14'57"N, 35°58'34"E, 970 m, 10.V.2017, leg. AK, PN, TN, CT (1); same but swept, 27.V.2015, leg. MB, AM, TN, MR (2).

Oedecnemidius varius (Brullé, 1832)

Material examined – Northern gov., 6 km NE Batroun, Barhalioun, macchia, hand collected, 34°15.919'N, 35°52.724'E, 1060 m, 2.V.2017, leg. MB, AK, PN, TN (5).

Remark – First record for Lebanon.

Parascythopus mirandus Desbrochers des Loges, 1875

Material examined – Northern gov., Tannourine env., 2 km N Harissa, Tannourine Cedars Nat. Reserve, swept & hand collected, 34°12'34"N, 35°55'45"E, 1750 m, 19.VI.2016, leg. AK, PN, TN (5); Bcharre distr., 1 km E Ariz, Horsh Arz el-Rab, ancient *Cedrus* forest, 34°14'39"N, 36°2'56"E, 1900 m, 29.VII.2018, leg. PN, TN, WY (2); Bcharre env., 1 km E Ariz, Horsh Arz el-Rab, ancient *Cedrus* forest, 34°14'33"N, 36°2'59"E, 1900 m, 20.V.2015, leg. AM, TN (2).

Parascythopus kadleci Borovec et Magnano, 2004

Material examined – Northern gov., 6 km NE Batroun, Barhalioun, macchia, hand collected, 34°15.919'N, 35°52.724'E, 1060 m, 2.V.2017, leg. MB, AK, PN, TN (1).

Phyllobius fulvago Gyllenhal, 1834

Material examined – Northern gov., Bcharre env., Quadisha Valley, swept & beaten, 34°14'57"N, 35°58'34"E, 970 m, 5.V.2017, leg. AK, PN, TN, CT (44); Tannourine env., 2 km N Harissa, Fuvar, stream valley, swept & beaten, 34°12'22"N, 35°55'17"E, 1460 m, 17.VI.2016, leg. AK, PN, TN (2) (1); 1 km E Ariz, Horsh Arz el-Rab, ancient *Cedrus* forest, swept & hand collected, 34°14.494'N, 36°2.884'E, 1900 m, 9.V.2017, leg. AK, PN, TN, CT (3); Bcharre env., 1 km E Ariz, Horsh Arz el-Rab, ancient *Cedrus* forest, swept & hand collected, 34°14'33"N, 36°2'59"E, 1900 m, 20.VI.2016, leg. MB, AK, PN, TN (1); Ehden, Horsh Ehden Natural Reserve, swept, 34°18'33"N, 35°59'14"E, 1525 m, 21.V.2015, leg. MB, AM, TN (1); Tannourine env., 2 km N Harissa, Tannourine Cedars Nat. Reserve, 34°12'34"N, 35°55'45"E, 1750 m, 23.V.2015, leg. OA, MB, AM, NN, TN, MR, WY (3); Mount Lebanon Range, Kfar Hay, Mar Youanna Maroun, macchia, swept & hand collected, 34°14'47.69"N, 35°45'1.02"E, 322 m, 3.V.2017, leg. MB, AK, PN, TN (5); Arsoun, *Pinus* forest, swept & beaten, 33°51'8.03"N, 35°41'44.36"E, 7.V.2017, leg. AK, PN, TN (4); Arsoun, 2.V.2016, leg. NN (1).

Rhinoscythopus obliquus (Desbrochers des Loges, 1875)

Material examined – Mount Lebanon Range, Kfar Hay, Mar Youanna Maroun, macchia, swept & hand collected, 34°14'47.69"N, 35°45'1.02"E, 322 m, 3.V.2017, leg. MB, AK, PN, TN (1).

Tribe Polydrusini Schoenherr, 1823

Polydrusus grandiceps (Desbrochers des Loges, 1875)

Material examined – Mount Lebanon Range, Arsoun, *Pinus* forest, from *Tomicus* pheromone trap, 33°51'8.03"N, 35°41'44.36"E, X.2016, leg. NN (1); 1 km E Tannourine El Tahta, *Platanus* grove, swept & hand collected, 34°12'44"N, 35°53'14"E, 31.VII.2018, leg. PN, TN & WY (1); 2 km N Harissa, Tannourine Cedars Nat. Reserve, swept & hand collected, 34°12'34"N, 35°55'45"E, 1750 m, 24.VII.2018, leg. PN, TN (1); Ehden, Horsh Ehden Natural Reserve, swept & hand collected, 34°18'25"N, 35°59'6"E, 2.VIII.2018, leg. PN TN (1); same but 25.VII.2018, (6).

Polydrusus luctuosus (Desbrochers des Loges, 1875)

Material examined – Tannourine, 28.V.2016, Saffan Kyrk (1); Northern gov., Tannourine env., 2 km N Harissa, Tannourine Cedars Nat. Reserve, 34°12'34"N, 35°55'45"E, 1750 m, 23.V.2015, leg. OA, MB, AM, NN, TN, MR, WY (1); Ehden, Horsh Ehden Natural Reserve, swept, 34°18'33"N, 35°59'14"E, 1525 m, 21.V.2015, leg. MB, AM, TN (1).

Remark – First records for Lebanon.

Tribe Psallidiini Lacordaire, 1863

Psallidium strenuum Faust, 1889

Material examined – Mount Lebanon Range, Aintoura, Bkerki Valley, 33°57'52.15"N, 35°38'15.95"E, swept & beaten, 8.V.2017, leg. AK, PN, TN (1).

Tribe Sciaphilini Sharp, 1891

Brachysomus (Hippomias) tannourinensis Szénási et Németh, 2019

Material examined – Northern gov., Tannourine env., 2 km N Harissa, Tannourine Cedars Nat. Reserve, sifted from leaf litter, 34°12'34"N, 35°55'45"E, 1750 m, 6.V.2017, leg. AK, PN, TN (holotype and 53 paratypes).

Tribe Sitonini Gistel, 1848

Charagmus variegatus (Fahraeus, 1840)

Material examined – Mount Lebanon Range, Arsoun, 2.V.2016, leg. NN (1).

Remark – First record for Lebanon.

Sitona aliciae Velázquez de Castro, 2011

Material examined – Northern gov., Bcharre env., 4 km E Ariz, hand collected, 34°14.645'N, 36°5.166'E, 2830 m, 24.VI.2016, leg. MB, AK, PN, TN, MR, WY (2).

Remark – First record for Lebanon.

Sitona callosus Gyllenhal, 1834

Material examined – Northern gov., Bcharre env., 1 km E Ariz, Horsh Arz el-Rab, ancient *Cedrus* forest, swept & hand collected, 34°14'33"N, 36°2'59"E, 1900 m, 22.V.2015, leg. AM, TN, MR, WY (1).

Remark – First record for Lebanon.

Sitona gemellatus Gyllenhal, 1834

Material examined – Mount Lebanon Range, Kfar Hay, Mar Youanna Maroun, macchia, swept & hand collected, 34°14'47.69"N, 35°45'1.02"E, 322 m, 3.V.2017, leg. MB, AK, PN, TN (1).

Remark – First record for Lebanon.

Sitona lividipes lividipes Fahraeus, 1840

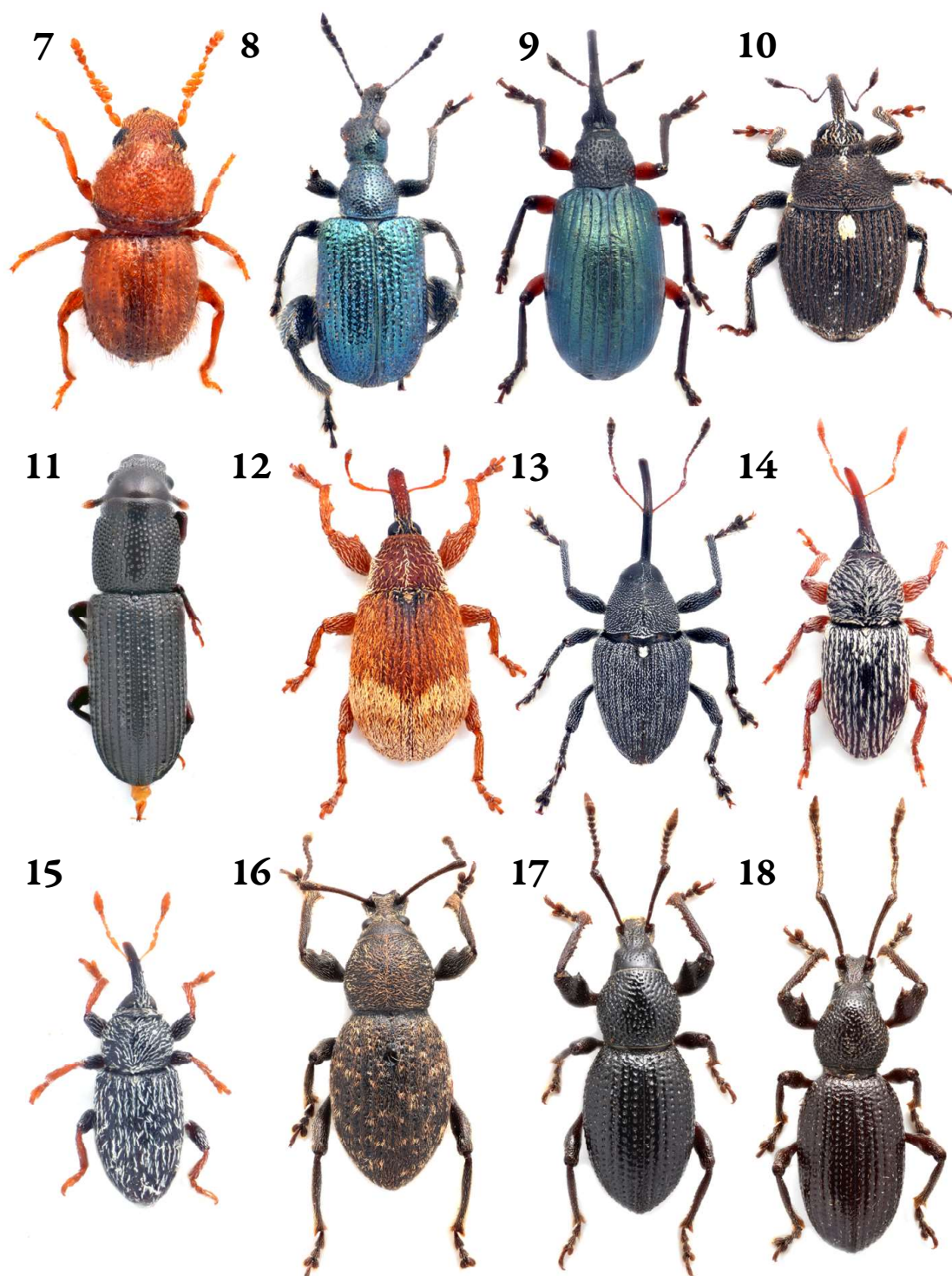
Material examined – Northern gov., Ehden, Horsh Ehden Natural Reserve, swept, 34°18'33"N, 35°59'14"E, 1525 m, 21.V.2015, leg. MB, AM, TN (1).

Remark – First record for Lebanon.

Sitona puncticollis Stephens, 1831

Material examined – Northern gov., Bcharre env., 4 km SE Ariz, hand collected at snow banks, 34°12'41"N, 36°3'34"E, 2570 m, 20.V.2015, leg. AM, TN (1).

Remark – First record for Lebanon.



Figs 7–18. Habitus images: 7 = *Phaenotheriosoma besucheti* Frieser, 1978, 8 = *Deporaus podager* (Desbrochers des Loges, 1889), 9 = *Euprotapion kuenenburgerum* (Reitter, 1898), 10 = *Glocianus sericellus* (Schultze, 1900), 11 = *Rhyncolus syriacus* Desbrochers des Loges, 1892, 12 = *Bradybatus delagrangi* Desbrochers des Loges, 1892, 13 = *Curculio muchei* Voss, 1962, 14 = *Tychius longinasus* Desbrochers des Loges, 1907, 15 = *T. ruficornis* Tournier, 1874, 16 = *Otiorhynchus minutigranulatus* Magnano, 1999, 17 = *O. nitidus* Reiche et Saulcy, 1858, 18 = *O. schuhmacheri* Stierlin, 1883. Not to scale (photos by Tamás Németh)

Subfamily Hyperinae Marseul, 1863 (1848)

Tribe Hyperini Marseul, 1863 (1848)

Brachypera dauci (Olivier, 1807)

Material examined – Mount Lebanon Range, apricot, 19.VII.1997, pitfall trap (1).

Remark – First record for Lebanon.

Donus orientalis Capiomont, 1868

Material examined – Northern gov., Ehden, Horsh Ehden Natural Reserve, swept & hand collected, 34°18'33"N, 35°59'14"E, 1525 m, 2.V.2017, leg. MB, AK, PN, TN (1).

Remark – First record for Lebanon.

Subfamily Lixinae Schoenherr, 1823

Tribe Cleonini Schoenherr, 1826

Cleonis pigra (Scopoli, 1763)

Material examined – Northern gov., Bcharre env., 2 km E Ariz, Horsh Arz el-Rab, hand collected & from beneath stones, 34°14'5.56"N, 36°3'39.18"E, 2150 m, 9.V.2017, leg. AK, PN, TN, CT (3); Bcharre env., 4 km E Ariz, hand collected, 34°14.645'N, 36°5.166'E, 2830 m, 24.VI.2016, leg. MB, AK, PN, TN, MR, WY (1); Bcharre env., 4 km SE Ariz, hand collected, 34°14'6.53"N, 36°3'33.94"E, 2100 m, 20.VI.2016, leg. MB, AK, PN, TN (4).

Remark – First records for Lebanon.

Coniocleonus cicatricosus (Hoppe, 1795)

Material examined – Northern gov., Tannourine env., 2 km N Harissa, Fuvar, stream valley, swept & beaten, 34°12'22"N, 35°55'17"E, 1460 m, 17.VI.2016, leg. AK, PN, TN (1).

Remark – First record for Lebanon.

Cyphocleonus samaritanus (Reiche et Saulcy, 1858)

Material examined – Northern gov., Tannourine env., 2 km N Harissa, Tannourine Cedars Nat. Reserve, 34°12'28.75"N; 35°56'5.01"E, 1802 m, hand collected & swept, 10.V.2017, leg. AK, PN, TN (3); Ehden, S to Horsh Ehden

Natural Reserve, from beneath stones, 34°18'33"N, 35°59'14"E, 1895 m, 4.V.2017, leg. MB, AK, PN, TN, CT (1).

Remark – First records for Lebanon.

Mecaspis alternans (Herbst, 1795)

Material examined – Mount Lebanon Range, Monteverde, *Pinus pinea* ecosyst., 27.VIII.1997, leg. NN (1).

Remark – First record for Lebanon.

Menecleonus signaticollis (Gyllenhal, 1834)

(Fig. 4)

Material examined – Northern gov., Bcharre env., 4 km SE Ariz, hand collected at snow banks, 34°14'6.53"N, 36°3'33.94"E, 2100 m, 22.V.2015, leg. AM, TN, MR, WY (2).

Remark – First record for Lebanon.

Pseudocleonus pustulosus Chevrolat, 1876

Material examined – Northern gov., Bcharre env., 4 km SE Ariz, hand collected, 34°14'6.53"N, 36°3'33.94"E, 2100 m, 20.VI.2016, leg. MB, AK, PN, TN (2); same but 34°14.645'N, 36°5.166'E, 2830 m, 24.VI.2016, leg. MB, AK, PN, TN, MR, WY (2); Tannourine, 30.VI.2016, leg. NN (1).

Tribe Lixini Schoenherr, 1823

Bangasternus orientalis (Capiomont, 1873)

Material examined – Northern gov., Bcharre env., 4 km E Ariz, hand collected, 34°14.645'N, 36°5.166'E, 2830 m, 24.VI.2016, leg. MB, AK, PN, TN, MR, WY (3).

Bangasternus planifrons (Brullé, 1832)

Material examined – Northern gov., Tourza, shrubs, hand collected, 34°16'34"N, 35°53'54"E, 600 m, 19.V.2015, leg. AM, TN (1).

Gasteroclisus syriacus Petri, 1920

Material examined – Mount Lebanon Range, Arsoun, 2.V.2016, leg. NN (1).

Larinus centaurii (Olivier, 1807)

Material examined – Northern gov., Tannourine env., 2 km N Harissa, Tannourine Cedars Nat. Reserve, 20.V.2012, NN (1).

Remark – First record for Lebanon.

Larinus bardus Gyllenhal, 1835

Material examined – Northern gov., 6km W Tannourine, “Tann. uplands”, hand collected, 34°12’30”N, 36°0’27”E, 26.VII.2018, leg. PN, TN (11).

Remark – First record for Lebanon.

Larinus grisescens Gyllenhal, 1835

Material examined – Northern gov., Tannourine env., 2 km N Harissa, Tannourine Cedars Nat. Reserve, 34°12’34”N, 35°55’45”E, 1750 m, 23.V.2015, leg. OA, MB, AM, NN, TN, MR, WY (2).

Larinus minutus Gyllenhal, 1835

Material examined – Northern gov., 6km W Tannourine, “Tann. uplands”, hand collected, 34°9.457’N, 35°57.282’E, 1940 m, 28.VI.2016, leg. AK, PN, TN (8); Tannourine env., Chatin, hand collected, 18.VI.2016, leg. MB (1); Tannourine, 30.VI.2016, leg. NN (1); Akkar gov., Fnaidek, *Quercus* forest, hand collected, 34°28’19”N, 36°12’28”E, 3.VIII.2018, leg. PN, TN, CT (4).

Larinus onopordi (Fabricius, 1787)

(Fig. 5)

Material examined – Mount Lebanon gov., Jounieh, Holy Spirit University of Kaslik, botanical garden, 19.V.2015, leg. AM, TN (6); Tourza, shrubs, singled, 34°16’34”N, 35°53’54”E, 600 m, 19.V.2015, leg. AM, TN (4); Northern gov., Ehden, Horsh Ehden Natural Reserve, swept & singled, 34°18’33”N, 35°59’14”E, 1525 m,

21.V.2015, leg. MB, AM, TN (4); Tannourine env., 2 km N Harissa, Tannourine Cedars Nat. Reserve, from beneath stones, 34°12'34"N, 35°55'45"E, 1750 m, 26.VI.2016, leg. AK, PN, TN (1); same but swept & singled 28.VI.2016, (5); same but 34°12'28.75"N; 35°56'5.01"E, 1802 m, 11.V.2017, leg. PN (2); same but swept & hand collected, 24.VII.2018, leg. PN, TN (7); same but 23.V.2015, leg. OA, MB, AM, NN, TN, MR, WY (2); 6 km W Tannourine, "Tann. uplands", singled, 34°9.457'N, 35°57.282'E, 1940 m, 28.VI.2016, leg. AK, PN, TN (5); Bcharre env., 4 km SE Ariz, hand collected at snow banks, 34°12'41"N, 36°3'34"E, 2570 m, 20.V.2015, leg. AM, TN (1); Tourza, shrubs, hand collected, 34°16'34"N, 35°53'54"E, 600 m, 19.V.2015, leg. AM, TN (1); Akkar gov., Fnaidek, *Quercus* forest, hand collected, 34°28'19"N, 36°12'28"E, 3.VIII.2018, leg. PN, TN, CT (1); Bekaa Valley, Haouch Al Nabi, 24.V.2018, leg. WY (4).

Larinus ovaliformis Capiomont, 1874

Material examined – Northern gov., Tannourine El Tahta, macchia, beaten & netted from canopy, 34°12'46.84"N, 35°52'26.40"E, 960 m, 10.V.2017, leg. AK, TN, CT (1).

Larinus rudicollis Petri, 1907

Material examined – Northern gov., Tannourine El Tahta, macchia, beaten & netted from canopy, 34°12'46.84"N, 35°52'26.40"E, 960 m, 10.V.2017, leg. AK, TN, CT (1); same but swept & hand collected, 27.VII.2018, leg. PN, TN (1); Tannourine env., 2 km N Harissa, Tannourine Cedars Nat. Reserve, swept & hand collected, 34°12'34"N, 35°55'45"E, 1750 m, 18.VI.2016, leg. AK, PN, TN (1); Tourza, shrubs, hand collected, 34°16'34"N, 35°53'54"E, 600 m, 19.V.2015, leg. AM, TN (1); Bcharre, suburb, hand collected, 34°15'33"N, 35°59'52"E, 1570 m, 20.V.2015, leg. AM, TN (1); Mount Lebanon Range, Arsoun, *Pinus* forest, from malaise trap, 33°51'8.03"N, 35°41'44.36"E, X.2016, leg. NN (1).

Larinus syriacus Gyllenhal, 1835

Material examined – Northern gov., Tannourine El Tahta, macchia, beaten & netted from canopy, 34°12'46.84"N, 35°52'26.40"E, 960 m, 10.V.2017, leg. AK, TN, CT (2).

Remark – First record for Lebanon.

Larinus sturnus (Schaller, 1783)

Material examined – Northern gov., Tannourine env., 2 km N Harissa, Tannourine Cedars Nat. Reserve, 34°12'28.75"N; 35°56'5.01"E, 1802 m, 11.V.2017, leg. PN (3); same but hand collected & swept, 10.V.2017, leg. AK, PN, TN (1); Bcharre env., 4 km E Ariz, hand collected, 34°14.645'N, 36°5.166'E, 2830 m, 24.VI.2016, leg. MB, AK, PN, TN, MR, WY (1); 6km W Tannourine, "Tann. uplands", hand collected, 34°12'30"N, 36°0'27"E, 26.VII.2018, leg. PN, TN (17).

Remark – First records for Lebanon.

Lixus ascanii (Linnaeus, 1767)

Material examined – Northern gov., Bcharre env., 1 km E Ariz, Horsh Arz el-Rab, ancient *Cedrus* forest, swept & hand collected, 34°14.494'N, 36°2.884'E, 1900 m, 9.V.2017, leg. AK, PN, TN, CT (1); Bcharre env., 4 km SE Ariz, hand collected at snow banks, 34°14'6.53"N, 36°3'33.94"E, 2100 m, 22.V.2015, leg. AM, TN, MR, WY (1).

Remark – First records for Lebanon.

Lixus cardui Olivier, 1807

Material examined – Northern gov., Tannourine El Tahta, macchia, swept & hand collected, 34°12'46.84"N, 35°52'26.40"E, 960 m, 3.V.2017, leg. MB, AK, PN, TN (2).

Remark – First record for Lebanon.

Lixus filiformis (Fabricius, 1781)

Material examined – Mount Lebanon Range, Kfar Hay, Mar Youanna Maroun, macchia, swept & hand collected, 34°14'47.69"N, 35°45'1.02"E, 322 m, 3.V.2017, leg. MB, AK, PN, TN (2); Northern gov., Tannourine El Tahta, macchia, beaten & netted from canopy, 34°12'46.84"N, 35°52'26.40"E, 960 m, 10.V.2017, leg. AK, TN, CT (1).

Remark – First records for Lebanon.

Lixus furcatus Olivier, 1807

Material examined – Northern gov., Ehden, Horsh Ehden Natural Reserve, swept & hand collected, 34°18'33"N, 35°59'14"E, 1525 m, 19.VI.2016, leg. AK, PN, TN (1).

Remark – First record for Lebanon.

Lixus korbi Petri, 1904

Material examined – Northern gov., Tannourine env., 2 km N Harissa, Tannourine Cedars Nat. Reserve, 34°12'34"N, 35°55'45"E, 1750 m, 23.V.2015, leg. OA, MB, AM, NN, TN (1).

Remark – First record for Lebanon.

Lixus obesus Petri, 1904

Material examined – Northern gov., Tannourine env., 2 km N Harissa, Tannourine Cedars Nat. Reserve, canopy netting, 34°12'34"N, 35°55'45"E, 1750 m, 21.VI.2016, leg. PN, TN (1); Tannourine, 28.V.2016, leg. SK (2).

Lixus rectodorsalis Petri, 1904

(Fig. 6)

Material examined – Northern gov., Tannourine env., 2 km N Harissa, Tannourine Cedars Nat. Reserve, sifted from leaf litter, 34°12'34"N, 35°55'45"E, 1750 m, 6.V.2017, leg. AK, PN, TN (3); same but swept & hand collected, 1.V.2017, leg. AK, PN, TN (4); Ehden, S to Horsh Ehden Natural Reserve, from beneath stones, 34°18'33"N, 35°59'14"E, 1895 m, 4.V.2017, leg. MB, AK, PN, TN, CT (1).

Remark – First records for Lebanon.

Lixus scolopax Boheman, 1835

Material examined – Northern gov., Bcharre env., Quadisha Valley, swept & beaten, 34°14'57"N, 35°58'34"E, 970 m, 5.V.2017, leg. AK, PN, TN, CT (2); same but 27.V.2015, leg. MB, AM, TN, MR (1); Tannourine env., 2 km N Harissa, Fuvar, stream valley, swept & beaten, 34°12'22"N, 35°55'17"E, 1460 m, 17.VI.2016, leg. AK, PN, TN (3); Tannourine env., 2 km N Harissa, Tannourine Cedars Nat. Reserve, swept & hand collected, 34°12'34"N, 35°55'45"E, 1750 m, 23.V.2015, V–VII.2018, 16.VI.2016, leg. OA, MB, AM, NN, MR WY,

CT, AK, PN, TN (4); Tannourine El Tahta, macchia, swept & hand collected, 34°12'46.84"N, 35°52'26.40"E, 960 m, 3.V.2017, leg. MB, AK, PN, TN (2); Mount Lebanon Range, Kfar Hay, Mar Youanna Maroun, macchia, swept & hand collected, 34°14'47.69"N, 35°45'1.02"E, 322 m, 3.V.2017, leg. MB, AK, PN TN (1); Akkar gov., Fnaidek, *Quercus* forest, hand collected, 34°28'19"N, 36°12'28"E, 3.VIII.2018, leg. PN, TN, CT (1).

Remark – First records for Lebanon.

Lixus speciosus Miller, 1861

Material examined – Mount Lebanon Range, Aarsal, cherry, 2.IX.1997, pitfall (1).

Remark – First record for Lebanon.

Lixus vilis (Rossi, 1790)

Material examined – Northern gov., Bcharre env., 1 km E Ariz, Horsh Arz el-Rab, ancient *Cedrus* forest, 34°14'33"N, 36°2'59"E, 1900 m, 20.V.2015, leg. AM, TN (1).

Remark – First record for Lebanon.

Rhinocyllus conicus (Froelich, 1792)

Material examined – Northern gov., Tannourine env., 2 km N Harissa, Tannourine Cedars Nat. Reserve, swept, 34°12'34"N, 35°55'45"E, 1750 m, 5.V.2017, leg. MB (1).

Remark – First record for Lebanon.

Subfamily Mesoptiliinae Lacordaire, 1863

Tribe Magdalidini Pascoe, 1870

Magdalis duplicata Germar, 1819

Material examined – Northern gov., Tannourine env., 2 km N Harissa, Tannourine Cedars Nat. Reserve, 34°12'34"N, 35°55'45"E, 1750 m, 23.V.2015, leg. OA, MB, AM, NN, TN, MR, WY (2); Tannourine, 28.IV.2016, NN (1).

Remark – First record for Lebanon.

Magdalis scutellaris K. Daniel, 1903

Material examined – Northern gov., Tannourine El Tahta, macchia, beaten & netted from canopy, 34°12'46.84"N, 35°52'26.40"E, 960 m, 10.V.2017, leg. AK, TN, CT (1); Tannourine env., 2 km N Harissa, Tannourine Cedars Nat. Reserve, swept & hand collected, 34°12'34"N, 35°55'45"E, 1750 m, 16.VI.2016, leg. AK, PN, TN (1); Ehden, Horsh Ehden Natural Reserve, swept, 34°18'33"N, 35°59'14"E, 1525 m, 21.V.2015, leg. MB, AM, TN (1); same but from beneath bark, 21.V.2015, leg. MB, AM, TN (1).

Remark – First records for Lebanon.

Magdalis violacea (Linnaeus, 1758)

Material examined – Northern gov., Tannourine env., 2 km N Harissa, Tannourine Cedars Nat. Reserve, swept & hand collected, 34°12'34"N, 35°55'45"E, 1750 m, 19.VI.2016, leg. AK, PN, TN (1); Bcharre env., 1 km E Ariz, Horsh Arz el-Rab, ancient *Cedrus* forest, swept & hand collected, 34°14'33"N, 36°2'59"E, 1900 m, 20.V.2015, leg. AM, TN, MR (3); same but hand collected at night, 27.V.2015, leg. MB, AM, TN, MR (2).

Remark – First records for Lebanon.

Subfamily Molytinae Schoenherr, 1823**Tribe Cryptorhynchini Schoenherr, 1825***Echinodera hethhei* Stüben, 2018

Material examined – Northern gov., Ehden, Horsh Ehden Natural Reserve, upper gate, mixed forest, sifted, 34°18'15.38"N, 35°59'2.66"E, 1600 m, 4.V.2017, leg. MB, AK, PN, TN, CT (1).

Remark – First record for Lebanon.

Kykliaocalles syriacus (Pic, 1900)

Material examined – Northern gov., Tannourine env., 2 km N Harissa, Tannourine Cedars Nat. Reserve, pitfall trap, 34°12'34"N, 35°55'45"E, 1750 m, VI–VIII.2016, leg. MR (11).

Tribe Molytini Schoenherr, 1823
Paraminyops opulentus opulentus Reiche, 1879

Material examined – Mount Lebanon Range, Ain Saade, *Pinus pinea* ecosyst., 18.V.1997, leg. Masri, NN, Routier (1).

*

Acknowledgements – We thank Gábor Csorba (deputy general director, HNHM) without whom the Lebanese trips could not be realised. This study would not be possible without the kind help of Oscar Akiki, Mira Boustani, András Márkus, Hanna Mikhael, Petra Nemes, Martine Rehayem, Challita Tanios, Charbel Tawk and Wael Yammine during the fieldwork and organisation of the expeditions. Special thanks are due to Csilla Szabó (HNHM) for typing the label data into the manuscript, and to Piotr Bialooki (Poland), Michael Košťál (Czech Republic) and Attila Podlussány (HNHM) for their help in identification of some problematic specimens.

REFERENCES

- ALONSO-ZARAZAGA M. A., BARRIOS H., BOROVEC R., BOUCHARD P., CALDARA R., COLONNELLI E., GÜLTEKIN L., HLAVÁČ P., KOROTYAEV B., LYAL C. H. C., MACHADO A., MEREGALLI M., PIEROTTI H., REN L., SÁNCHEZ-RUIZ M., SFORZI A., SILFVERBERG H., SKUHROVEC J., TRÝZNA M., VELÁZQUEZ DE CASTRO A. J. & YUNAKOV N. N. 2017: *Cooperative catalogue of Palaearctic Coleoptera Curculionoidea. Monografías electrónicas SEA 8*. – Sociedad Entomológica Aragonesa S. E. A., Zaragoza, 729 pp.
- ARZANOV Y. G. & KASATKIN D. G. 2018: To the knowledge of weevils of the genus *Brachycerus* Olivier, 1789 (Coleoptera: Curculionidae: Brachycerinae) from Lebanon. – *Caucasian Entomological Bulletin* **14**: 29–33. <https://doi.org/10.23885/18143326201814S2933>
- BEZDĚK J. 2018: Contribution to the knowledge of the Clytrini of the Eastern Mediterranean, the Near East and the Arabian Peninsula, with descriptions of four new species (Coleoptera: Chrysomelidae: Cryptocephalinae). – *European Journal of Taxonomy* **481**: 1–37. <https://doi.org/10.5852/ejt.2018.481>
- GERMANN C. 2018: A review of *Conocetus* Desbrochers des Loges, 1875, subgenus of *Polydrusus* Germar, 1817 (Coleoptera, Curculionidae, Entiminae). – *European Journal of Taxonomy* **392**: 1–39. <https://doi.org/10.5852/ejt.2018.392>
- KHOURY R., ANTOUN N., KHATER C. & ABOU HABIB N. 2015: *Fifth National Report of Lebanon to the Convention on Biological Diversity*. – Global Environment Facility, Lebanon, 146 pp.
- KOŠTÁL M. 2018: Two new species of the genus *Bradybatus* Germar, 1823 (subgenus *Nothops* Marseul, 1868) from Lebanon (Coleoptera: Curculionidae: Anthonomini). – *Koleopterologische Rundschau* **88**: 259–267.
- KOŠTÁL M. & CALDARA R. 2019: Revision of Palearctic species of the genus *Cionus* Clairville (Coleoptera: Curculionidae: Cionini). – *Zootaxa* **4631**(1): 1–144. <https://doi.org/10.11646/zootaxa.4631.1.1>

- MAGNANO L. 2010: Una nuova specie di Otiiorhynchus (Aequipennis) Magnano, 1998 della Turchia Meridionale (Coleoptera, Curculionidae). – *Atti della Accademia Roveretana degli Agiati, Classe di Scienze Matematiche Fisiche e Naturali* (Serie 8 B) **10**(B): 197–202.
- MÁRKUS A. & NÉMETH T. 2016: A new species of Alosterina Mulsant, 1863 from Lebanon, and notes on other species (Coleoptera: Cerambycidae). – *Folia entomologica hungarica* **77**: 23–32. <https://doi.org/10.17112/FoliaEntHung.2016.77.23>
- MYERS N., MITTERMEIER R. A., MITTERMEIER C. G., DA FONSECA G. A. B. & KENT J. 2000: Biodiversity hotspots for conservation priorities. – *Nature* **403**: 853–858. <https://doi.org/10.1038/35002501>
- NÉMETH T. 2019: Elateridae (Coleoptera) of Lebanon. – *Zootaxa* **4614**(1): 127–159. <https://doi.org/10.11646/zootaxa.4614.1.6>
- NÉMETH T., SZÉKELY K., KOTÁN A., MÁRKUS A., YAMMINE W., TANIOS C. & NEMER N. 2019: Notes on the longhorn beetles (Coleoptera: Cerambycidae) of Lebanon. – *Folia entomologica hungarica* **80**: 13–38. <https://doi.org/10.17112/FoliaEntHung.2019.80.13>
- SZÉNÁSI V. & NÉMETH T. 2019: Description of a new species of the subgenus Hippomias Yunakov, 2006 in the genus Brachysomus Schoenherr, 1823 (Coleoptera: Curculionidae: Entiminae) from Lebanon. – *Zootaxa* **4658**(2): 389–395. <https://doi.org/10.11646/zootaxa.4658.2.13>
- YAZBEK M., MACHAKA-HOURI N., AL-ZEIN M. S., SAFI S. SINNO N. & TALHOUK S. N. T 2011: Lebanon. – In: RADFORD E. A., CATULLO G. & MONTMOLLIN B. DE (eds): *Important Plant Areas of the south and east Mediterranean region: priority sites for conservation*. IUCN, Gland, Switzerland and Malaga, pp. 53–57.