








Cite this: *Nanoscale*, 2019, **11**, 14226

## Quantification of DNA damage induced repair focus formation *via* super-resolution dSTORM localization microscopy†

Dániel Varga, <sup>‡a</sup> Hajnalka Majoros, <sup>‡b,c</sup> Zsuzsanna Ujfaludi, <sup>b,c</sup>  
Miklós Erdélyi <sup>\*a</sup> and Tibor Pankotai <sup>\*b,c</sup>

In eukaryotic cells, each process, in which DNA is involved, should take place in the context of a chromatin structure. DNA double-strand breaks (DSBs) are one of the most deleterious lesions often leading to chromosomal rearrangement. In response to environmental stresses, cells have developed repair mechanisms to eliminate the DSBs. Upon DSB induction, several factors play roles in chromatin relaxation by catalysing the appropriate histone posttranslational modification (PTM) steps, therefore promoting the access of the repair factors to the DSBs. Among these PTMs, the phosphorylation of the histone variant H2AX at its Ser139 residue (also known as  $\gamma$ H2AX) could be observed at the break sites. The structure of a DNA double-strand break induced repair focus has to be organized during the repair as it contributes to the accessibility of specific repair proteins to the damaged site. Our aim was to develop a quantitative approach to analyse the morphology of single repair foci by super-resolution dSTORM microscopy to gain insight into chromatin organization in DNA repair. We have established a specific dSTORM measurement process by developing a new analytical algorithm for gaining quantitative information about chromatin morphology and repair foci topology at an individual  $\gamma$ H2AX enriched repair focus. Using this method we quantified single repair foci to show the distribution of  $\gamma$ H2AX. The image of individual  $\gamma$ H2AX referred to as the Single target Molecule response scatter Plot (SMPlot) was obtained by using high lateral resolution dSTORM images. Determination of the average localization numbers in an SMPlot was one of the key steps of quantitative dSTORM. A repair focus is made up of nanofoci. Such a substructure of repair foci can only be resolved and detected with super-resolution microscopy. Determination of the number of  $\gamma$ H2AXs in the nanofoci was another key step of quantitative dSTORM. Additionally, based on our new analysis method, we were able to show the number of nucleosomes in each nanofocus that could allow us to define the possible chromatin structure and the nucleosome density around the break sites. This method is one of the first demonstrations of a single-cell based quantitative measurement of a discrete repair focus, which could provide new opportunities to categorize the spatial organization of nanofoci by parametric determination of topological similarity.

Received 30th April 2019,  
Accepted 30th June 2019

DOI: 10.1039/c9nr03696b

rsc.li/nanoscale

## Introduction

The DNA in the nucleus is constantly targeted by different damaging agents derived from both endogenous and exogenous sources. DNA double-strand breaks (DSBs) are the most

deleterious lesions, and therefore they have to be repaired as quickly and efficiently as possible to prevent chromosomal loss and translocation. Since DSBs affect DNA integrity simultaneously with the recruitment of early DNA repair factors, a DNA damage response (DDR) is activated in the cells, which can arrest the cell cycle.<sup>1,2</sup> For efficient DDR activation, different DSB sensors are required to activate chromatin reorganization and recruitment of downstream repair proteins that can eventually accomplish the efficient repair process.<sup>3</sup> Recent studies have already shown that DNA damage can lead to immediate chromatin relaxation around the site of damage.<sup>4–6</sup> One of the first steps of DSB induced chromatin reorganization is the phosphorylation of the histone variant H2AX at its S139 residue (called  $\gamma$ H2AX) in the proximity of the damaged site.<sup>4,5,7,8</sup> The  $\gamma$ H2AX enriched chromosomal locus, considered

<sup>a</sup>University of Szeged, Department of Optics and Quantum Electronics, Hungary.  
E-mail: erdelyim@physx.u-szeged.hu

<sup>b</sup>University of Szeged, Department of Biochemistry and Molecular Biology, Hungary.  
E-mail: pankotai@bio.u-szeged.hu, pankotai.tibor@stoma.szote.u-szeged.hu

<sup>c</sup>University of Szeged, Department of Oral Biology and Experimental Dental Research, Hungary

†Electronic supplementary information (ESI) available. See DOI: 10.1039/c9nr03696b

‡These authors contributed equally to this work.



as the repair focus, marks the damage site to initiate the recruitment of further repair proteins required for the process and performance of the repair.<sup>9,10</sup> Several factors, such as the cell cycle state, functional activity of genes, break position along the DNA sequence, temporal state of DNA compaction, number of simultaneously occurring DSBs, *etc.*, have been known to influence this process, thereby assigning the fate of the cell.<sup>11,12</sup> The  $\gamma$ H2AX signal detection is regularly used to visualize and quantify the extent of DSBs and to follow the DNA repair kinetics.

Several techniques have been applied to follow the changes in  $\gamma$ H2AX signal intensity. Chromatin immunoprecipitation studies have revealed that the  $\gamma$ H2AX signal shows asymmetrical distribution around the damage site with lower density at the transcribed regions.<sup>13–20</sup> It has already been shown that both the chromatin topology and state are crucial for the organization of the recruitment of repair proteins. A recent study based on chromosome conformation capture (4C) experiments has highlighted the complexity of genome re-organization, including megabase range associations between certain chromosomal regions as well as smaller genomic interactions, which involve kilobase-length DNA segments.<sup>21,22</sup> Additionally, optical methods, such as conventional confocal microscopy, have also been regularly used for mapping the spatial distribution of DSBs. Due to the lateral resolution of these methods, the DDR signal can be detected in maximum 300 nm resolution. By using these techniques, it was shown that the  $\gamma$ H2AX signal distributes up to a megabase around the damaged site<sup>8</sup> generating DSB repair foci (repair foci) with a typical feature size of half a micron, which is just above the resolution limit of traditional fluorescence microscopes.

High resolution imaging based datasets of repair focus structures have already been published and demonstrated *via* single molecule localization methods (SMLM),<sup>23–28</sup> structured illumination microscopy (SIM),<sup>26,29,30</sup> and stimulated emission depletion (STED)<sup>29–31</sup> super-resolution methods. These images can be further evaluated by using cluster analysis, and both the spatial distribution and the geometrical parameters of repair foci and even nanofoci can be determined.<sup>32,33</sup> Single molecule localization methods (SMLM), such as dSTORM, provide the highest lateral resolution among optical methods and open the way for imaging biological structures in the sub-20 nm regime.<sup>34–36</sup> SMLM determines the positions of individual molecules, which are used to create the final image.<sup>37–39</sup> Different SMLM techniques such as PALM, PAINT and dSTORM have been proposed for quantitative analysis. However, taking into account the advantages and the limitations of the labelling procedures we opted to use the dSTORM technique.<sup>40–46</sup> Although dSTORM separates the nanofoci of the repair focus, quantitative evaluation of the images has still been challenging because the number of detected localizations ( $N_{\text{localizations}}$ ) generated by a single-labelled histone had remained unknown. Therefore, for quantitative analysis, the number of localizations per labelled  $\gamma$ H2AX histone (number of localizations in a SPlot) has to be statistically determined.

Here we provide insight into  $\gamma$ H2AX distribution in nanometre resolution by using a super-resolution dSTORM microscopy technique applied either on U2OS cells exposed to neocarzinostatin treatment or on AsiSI endonuclease-expressing DivA cells.<sup>18,47</sup> By surpassing the limitation of classical confocal microscopy, super-resolution dSTORM microscopy possesses high prospecting capacity, which allows us to enlarge complex structures at  $\gamma$ H2AX-enriched chromatin regions in 20 nm resolution. With this technique we measured the DDR profiles of several genomic regions and gained temporal, functional and structural insights into the damaged chromatin units evolved during the DSB repair. By means of dSTORM, in accord with the already published data, we observed that the number of repair foci increased following DSB induction.<sup>48,49</sup> In addition, we demonstrated that the sizes of these repair foci were extended under DSB formation and we could also provide a higher resolution of the repair foci spatial organization using our new statistical approaches. This article preconcerts the nano-scale organization of the repair foci, which could highlight the spatial localization of the nanofocus structure and quantitative measurements of these repair centres.

## Results

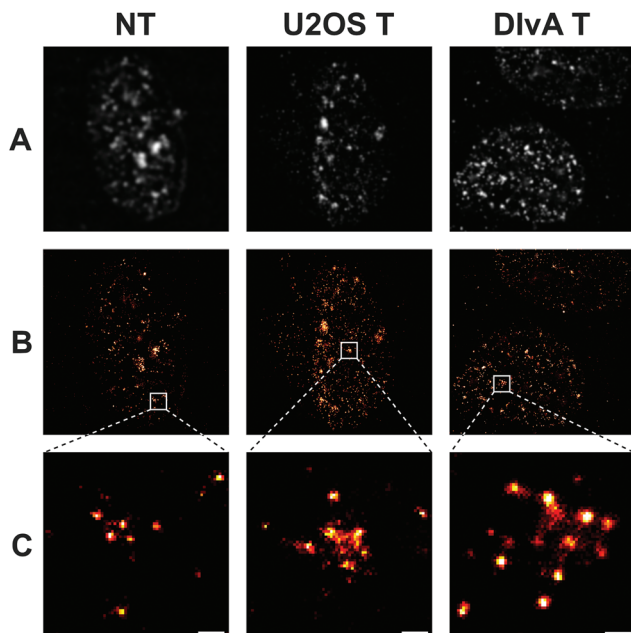
### The experimental system and the determination of the parameters used in dSTORM

The typical size of a repair focus is about half micron, just above the resolution limit of traditional fluorescence microscopes. However, at a high density of the DNA breaks when individual repair foci overlap and form larger clusters the traditional imaging methods cannot be utilized. In such cases optical super-resolution microscopy is required to distinguish individual repair foci and reveal their sub-structures containing 20–60 nm nanofoci.<sup>50</sup> In order to prove this, we generated DNA DSBs by applying neocarzinostatin and 4-OHT treatment to U2OS and DivA cells, respectively.<sup>14,47</sup> We quantified the DSB triggered repair foci formation 2 hours following the break induction by labelling H2AX S139 phosphorylated sites with fluorophore-conjugated antibody. We generated traditional EPI fluorescence and high resolution dSTORM images from the nuclei of non-treated and treated cells (Fig. 1A vs. B). By performing dSTORM, we observed an increase in the number and distribution of repair foci following DSB induction. At a higher resolution of individual repair foci, we could identify nanofoci that we used in our quantitative analysis (Fig. 1C).

### Spatial distribution of repair foci within cells

In contrast to traditional optical microscopy images, in which the separation of individual repair foci is a great challenge and their size can only be quantified by their intensity values, cluster-analysis dSTORM images pave the way for quantitative evaluation. Quantitative functions of repair foci, such as their spatial density variation and their area distribution, were evaluated by means of 2D density-based spatial cluster analysis





**Fig. 1** Traditional EPI fluorescence (A) and dSTORM super-resolved (B) images of nuclei of nontreated (NT) and treated (via NCS and 4-OHT) U2OS and DivA cells, respectively. Magnified dSTORM images (C) of the selected individual repair foci. Scale bar represents 200 nm.

(DBSCAN). This algorithm requires two input parameters: a minimum number of points that form a cluster ( $N_{\text{core}}$ ) and the maximum distance between two adjacent points ( $\epsilon$ ).<sup>51</sup> For the elimination of non-specific labelling and imprecise, out-of-focus localization,  $N_{\text{core}}$  and  $\epsilon$  were set to 8 and 50 nm during the calculations, respectively. Fig. 2A, C and E show a typical dSTORM super-resolved image of non-treated (NT) and treated (T) (with NCS and 4-OHT) U2OS and DivA cells. The cluster-analysis images of the selected cells are also shown (Fig. 2B, D and F). In order to efficiently reveal the repair focus distribution pattern inside the nucleus, the cluster analysis module was implemented into our rainSTORM localization software (for details see Materials and methods).

The algorithm isolated and quantified each repair focus based on their area and spatial distribution inside the nucleus. While Fig. 2A–F show single but typical nuclei, Fig. 2G–L depict the evaluation results of several, 5 untreated, 4 treated U2OS and 6 treated DivA nuclei, respectively. By using the algorithm, discrete nanofoci were analysed by quantifying the  $\gamma$ H2AX tag-pair distances. These defined nanofoci are different from those detected by standard microscopy showing the sub-structures of molecular arrangements (Fig. 2B, D and F).

It was reported that in euchromatic milieu DNA breaks could be repaired more effectively since these breaks do not need to be repositioned outside of the heterochromatic domain for the successful repair.<sup>52</sup> In order to detect the distribution of the  $\gamma$ H2AX enriched repair foci within the nucleus we applied cluster recognition, and we compared their position to the centre of the nucleus determined by a computer

algorithm. This position was used as a central point to plot individual repair foci by modelling their localization as a circular shell. The spatial density of repair foci show a non-linear distribution (grey dots and trend lines in Fig. 2G, H and I). Following DSB induction, in comparison to the control nuclei, we could detect almost 3-times more repair foci formation in the treated U2OS and DivA cells (grey dots and trend lines in Fig. 2H and I vs. G), respectively. The amount of the measured density increases from the periphery towards the centre of the nucleus due to the different chromatin organizations. For further quantitative analysis of the repair foci, we sorted them into two classes based on their size (indicated in red and blue in Fig. 2G–I). While in the nuclei of untreated cells, both populations have similar and regular density distribution, in the treated cells the number of large repair foci ( $>5000 \text{ nm}^2$ ) was found to be 2 times more than the number of small ( $<5000 \text{ nm}^2$ ) ones (Fig. 2H and I red vs. blue lines). Therefore, the larger repair foci could appear upon DNA damage induction, and it could differ from the repair foci induced by endogenous DNA damage.

Finally, for deep evaluation, several individual repair foci of each treatment category were chosen. For that, the sizes of clusters associated with the repair foci were categorized by their area, and their distribution was presented in histograms shown in Fig. 2J, K and L. The measured distributions could be fitted with lognormal curves.<sup>37</sup> In control cells, the expected area of the calculated surface was found to be  $2950 \text{ nm}^2$ , and this value was only slightly changed in the treated U2OS and DivA cells ( $2850 \text{ nm}^2$  and  $3150 \text{ nm}^2$ ). However, the mean values of the calculated distributions were increased by 18% ( $8750 \text{ nm}^2$ ) and 55% ( $11550 \text{ nm}^2$ ) in the treated cells compared to the untreated ones ( $7450 \text{ nm}^2$ ), since the normalized occurrence of the large-sized repair foci was enriched following DSB induction. The presented data reveal that this algorithm can also be used to separate the  $\gamma$ H2AX background, *i.e.* endogenous *versus* DSB induced signals (Fig. 2J vs. K and L). These data suggest that DSBs induced by either neocarzinostatin or 4-OHT could result in elevated  $\gamma$ H2AX histone enriched repair foci both in number and size.

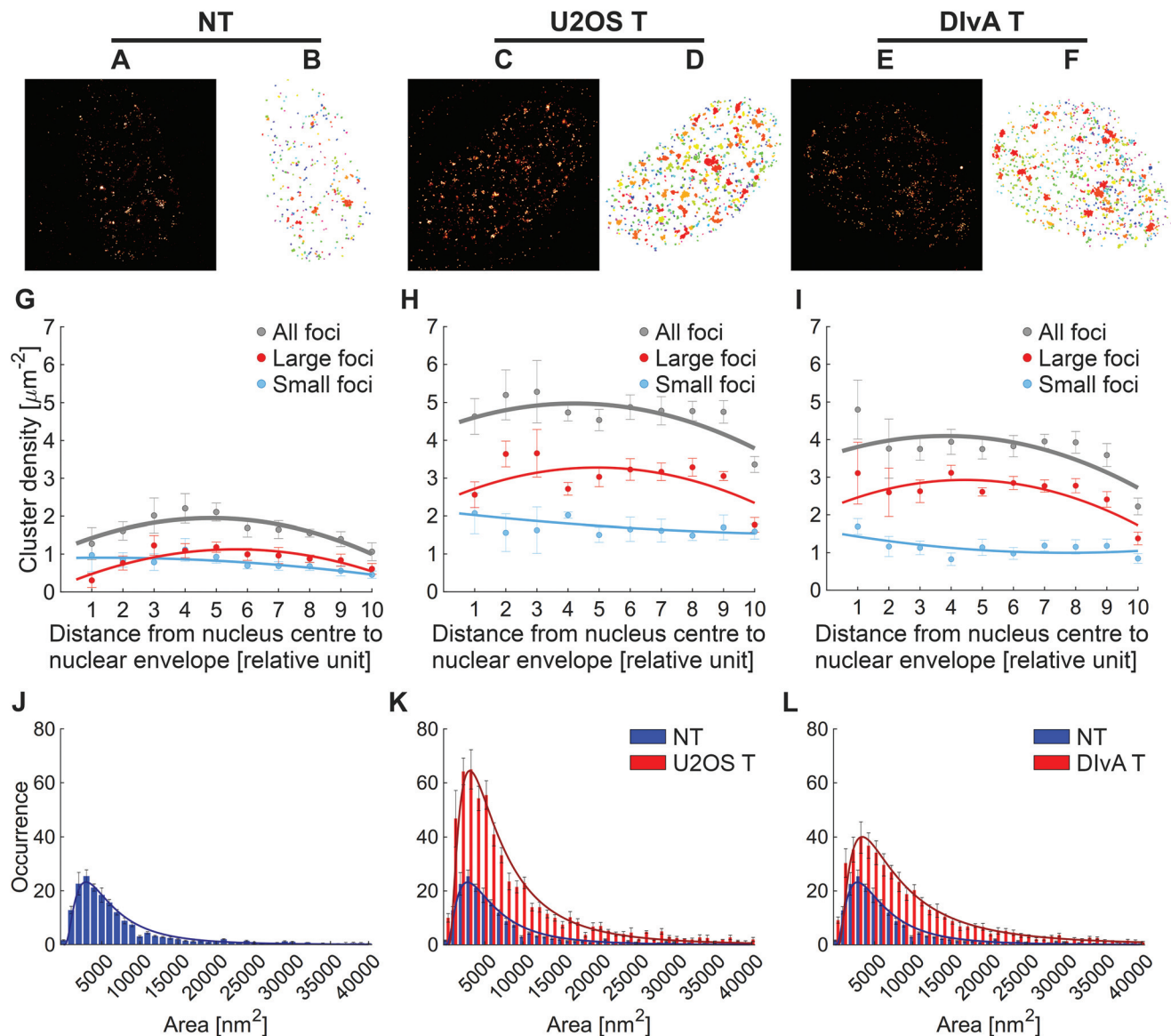
The evaluation of spatial distribution of repair foci is based on the cluster analysis of the raw dSTORM images, in which the pixel value represents the number of accepted localizations. However, the number of localizations ( $N_{\text{localizations}}$ ) generated by a single labelled histone strongly depends on the lifetime of the fluorescence ON state ( $N_{\text{lifetime}}$ ), the labelling density ( $N_{\text{labelling}}$ ) and the number of reactivation cycles of the applied dye molecules ( $N_{\text{activation}}$ ). Due to multiple localizations, the accepted ones belonging to the same target molecule form an SMPlot, the size of which depends on the localization precision.

$$N_{\text{localizations}} = N_{\text{lifetime}} \times N_{\text{labelling}} \times N_{\text{activation}}$$

Segmentation and quantitative evaluation of SMPlots are required to determine the response function of dSTORM imaging, in other words, the number of localizations belong-







**Fig. 2** dSTORM (A, C, and E) and cluster-analysis (B, D, and F) images of untreated (A, B) and treated U2OS (C, D) and DivA (E, F) cells. The average repair focus density functions are indicated in grey (G, H and I). The density function calculated for small (<5000  $\text{nm}^2$ ) and large (>5000  $\text{nm}^2$ ) repair foci are also shown in blue and red, respectively. Comparative histograms of the area distribution of repair focus sizes are presented for untreated (J), NCS treated U2OS (K) and DivA cells (L).

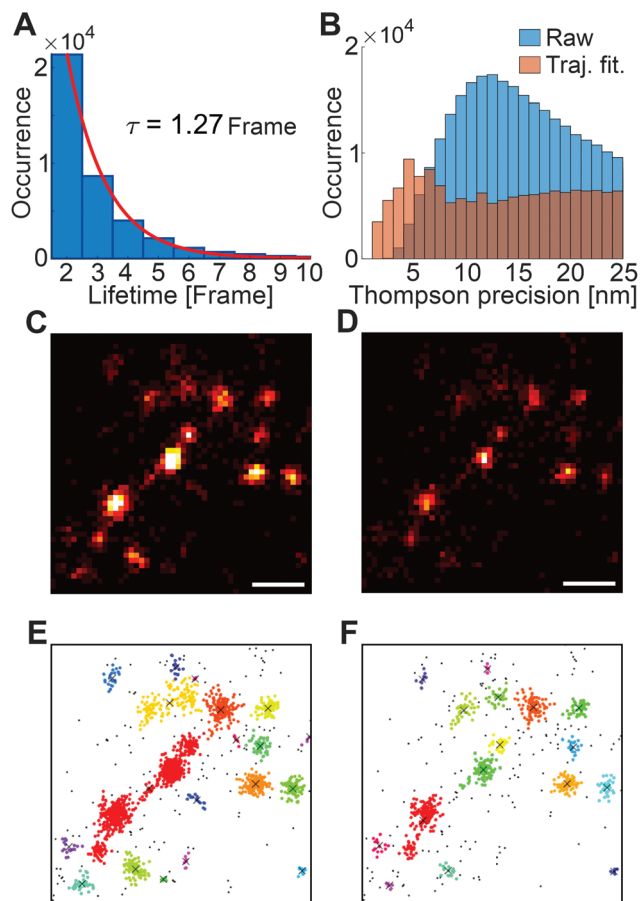
ing to a single labelled histone molecule. Being aware of this response function the size and spatial distribution of the captured repair foci can be statistically evaluated.

#### Trajectory fitting of individual blinking events ( $N_{\text{lifetime}}$ )

In dSTORM, the fluorescence dye molecules are stochastically switched between their OFF (no fluorescence), ON (fluorescence) and bleached states. The occupation of these states can be controlled by a special switching buffer and data acquisition (laser power *etc.*) parameters.<sup>53</sup> The lifetime of the ON state strongly depends on the biological sample and the local chemical environment.<sup>50</sup> Ideally, the lifetime of the ON state is in accordance with the exposure time, and the captured

photons emitted by a single dye molecule can be visualized on a single image frame. However, the detector is not triggered, and the lifetime of the ON state is not constant. As a result, the same dye molecule can be captured on sequential frames and the trajectory length of single emitted fluorescence shows an exponential decay (Fig. 3A). A trajectory fitting module was built into the rainSTORM localization software that can realign these sections.<sup>54</sup> This resulted in less but more precise detection of localizations (Fig. 3B). Labelling density, buffer conditions and image acquisition parameters were set to minimize the possibility of spatial and temporal overlap of individual PSFs (Point Spread Function), hence single Gaussian fitting could be used throughout this work. Fig. 3 shows the





**Fig. 3** The histogram represents the lifetime of the ON state (A). Trajectory fitting precise localizations (orange) and the original (raw) distribution (blue) are represented in B. 2D original (C) and trajectory fitted dSTORM image (D) of the same repair focus, respectively. Scale bar is 200 nm. Graphical representation of cluster analysis of a repair focus before (E) and after (F) trajectory fitting, respectively. The different colours indicate different nanofoci within a repair focus.

dSTORM (Fig. 3C and D) and the cluster analysis images (Fig. 3E and F) of a repair focus before and after trajectory fitting, respectively. The trajectory fitted image reveals more structural details, and consequently provides a more appropriate data source for cluster analysis (Fig. 3D and F).

#### Number of blinkings per individual SMPlot ( $N_{\text{labelling}} \times N_{\text{activation}}$ )

Generally, during immunostaining techniques, proteins are recognized by primary and fluorophore-conjugated secondary antibodies (Fig. 4A). However, the number of molecules, taking part in the labelling procedure and then in super-resolution imaging, strongly depend on the actual biological sample (number of epitopes *etc.*) and the local environment (pH, permeability *etc.*). During our measurements, due to the steric hindrance of the nucleosomes, a single primary antibody can bind to the target  $\gamma$ H2AX molecule. In addition, our measurements also support the already published data that the stoichiometry of the primary and secondary antibody is not equal (*i.e.* IgG), since the 2<sup>nd</sup> antibody could recognize two

epitope surfaces on the first antibody binding.<sup>55</sup> Consequently, a single  $\gamma$ H2AX molecule is labelled by one primary and one or two secondary antibodies. The number of dye molecules per secondary antibody was set to four, based on consultations with the manufacturer. In conclusion, we used a model in which a single target histone molecule is labelled either by 4 or 8 fluorescent dye molecules, therefore the number of dye molecules per  $\gamma$ H2AX molecule is

$$N_{\text{labelling}} = N_{\text{primary}} \times N_{\text{secondary}} \times N_{\text{dye}},$$

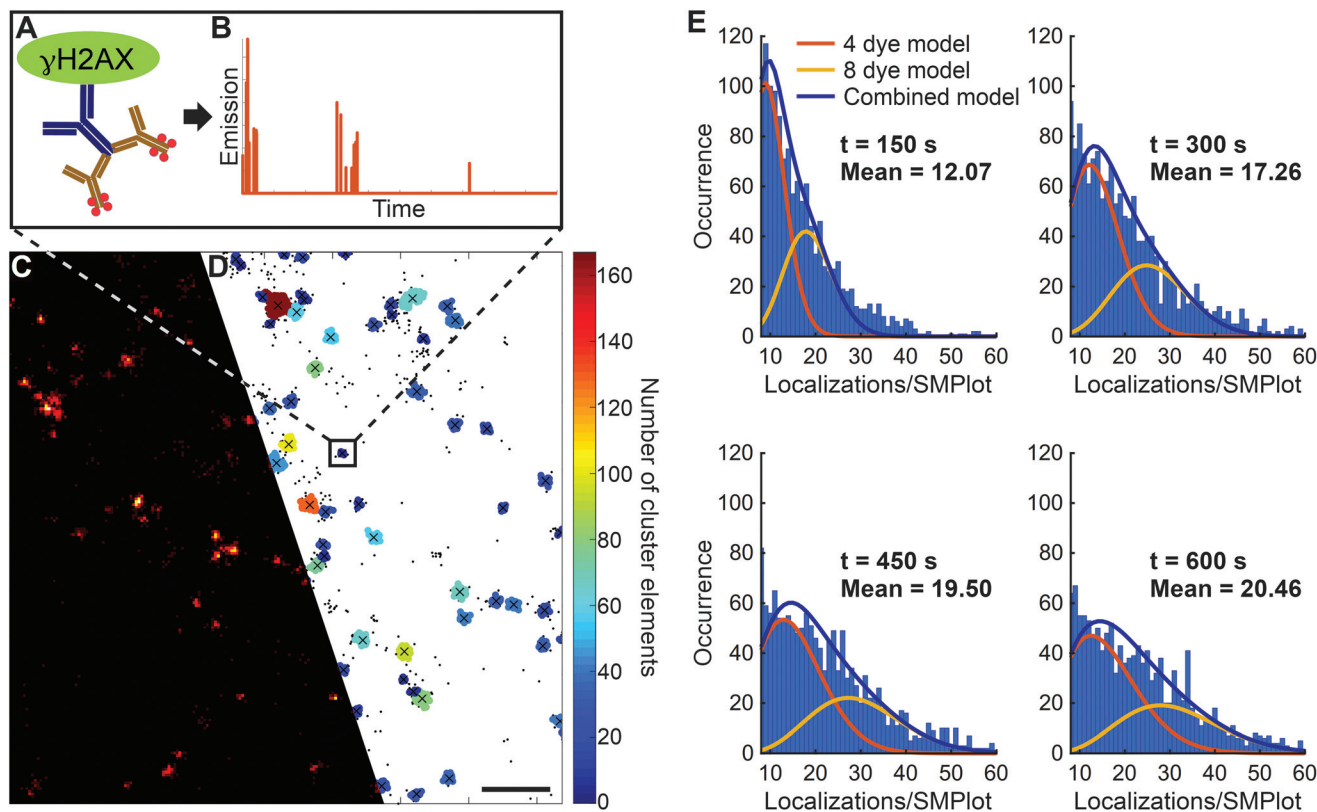
where  $N_{\text{primary}} = 1$ ,  $N_{\text{secondary}} = 1$  or 2 and  $N_{\text{dye}} = 4$ . The real ratio of  $\gamma$ H2AX labelled by 4 or 8 fluorescent dye molecules could be determined by means of cluster analysis (DBSCAN). To eliminate larger clusters belonging to multiple  $\gamma$ H2AX,  $N$  and  $\epsilon$  were set to 5 and 25 nm during the simulations, respectively. Clusters were further filtered by their size and only the small ones (area <5000 nm<sup>2</sup>) were taken into consideration and identified as nanofoci generated by a single  $\gamma$ H2AX. These clusters are represented with a dark blue colour in Fig. 4D. The histograms of localizations per SMPlot were depicted by using four different image stack sizes and were fitted with a theoretical curve (Fig. 4E). This curve is a linear combination of the two distributions representing the cases of 4 and 8 dyes per  $\gamma$ H2AX. Based on the weight of the two components, the ratio of  $\gamma$ H2AX molecules labelled with a single or two secondary antibodies can be determined.<sup>55</sup> The good agreement between the experimental and theoretical data confirms that the preliminary assumptions on labelling stoichiometry were correct.

Additionally, this ratio also depends on the duration of the measurement, since photobleaching plays a central role in the model. In the dSTORM technique dye molecules can be switched ON and OFF several times before they are finally bleached. It was shown that in a three-state switching model the number of switching cycles follow Poisson and geometrical distributions in short ( $k_{\text{bit}} \ll 1$ ) and long ( $k_{\text{bit}} \gg 1$ ) data acquisition times, respectively.<sup>46</sup> However, the typical number of switching cycles ( $N_{\text{activation}}$ ) has already been published for several dyes,<sup>56</sup> and it should be determined more specifically, since it strongly depends on the sample, the buffer conditions and the data acquisition parameters. Based on the evaluation of the fitted curves (Fig. 4E) it can be realized that a measurement time longer than 500 s (>20 000 image frame with 30 ms exposure time) was required for adequate statistical data analysis. This evaluation proved that under the measurement conditions detailed above on average 20 localizations belonged to a single  $\gamma$ H2AX molecule, *i.e.* the response function (number of localizations in SMPlot) of the system was found to be 20 localizations per target molecule.

#### Quantitative analysis of single DBS repair foci

Based on the statistically given response function we could determine the number of labelled  $\gamma$ H2AX in the individual repair foci both in the untreated and in the treated cells. dSTORM images and their cluster maps of three randomly





**Fig. 4** Schematic representation of the binding of first and secondary antibodies to  $\gamma$ H2AX (A) and their frame indexes are shown (B). Super-resolved dSTORM image before (C) and after (D) cluster analysis. Images obtained during dSTORM (C) and the SMPlots were selected *via* cluster analysis (D) and their histogram was applied to determine the ratio of labelling *via* 4 and 8 dye molecules (E) and the response function. Scale bar represents 500 nm.

selected cells with three typical repair foci are shown in Fig. 5 (A–I). In the treated cells, the densities of repair foci were found to be 2.8- and 2.2-times higher compared to the untreated U2OS control cells (Fig. 5D and G vs. A). In these cells, in which DSBs were induced, an increased number of  $\gamma$ H2AX could be observed within the repair focus compared to the control cells. The histograms obtained from the quantitative measurements are shown in Fig. 5M–O. The distribution of cluster sizes based on their  $\gamma$ H2AX histone numbers follow the same kinetics shown in Fig. 2 (Fig. 2J–L). Consequently, the number of  $\gamma$ H2AX molecules within a repair focus is linearly proportional to its area in untreated ( $397 \pm 7$   $\gamma$ H2AX per  $\text{nm}^2$ ), treated U2OS ( $427 \pm 3$   $\gamma$ H2AX per  $\text{nm}^2$ ), and treated DivA ( $412 \pm 4$   $\gamma$ H2AX per  $\text{nm}^2$ ) cells shown in Fig. 5J, K and L, respectively.

The major advantage of our algorithm is that it allows the schematic representation of the individual localization of repair foci and we could apply a topological analysis of the captured images. By using the parameters (localization, primary and secondary antibody numbers, fluorophores, *etc.*) determined in our measurements, we could mathematically analyse the topology of nanofoci within a repair focus. Each blinking event was measured, quantified and following the calculations the number of independent nanofoci were plotted into two-

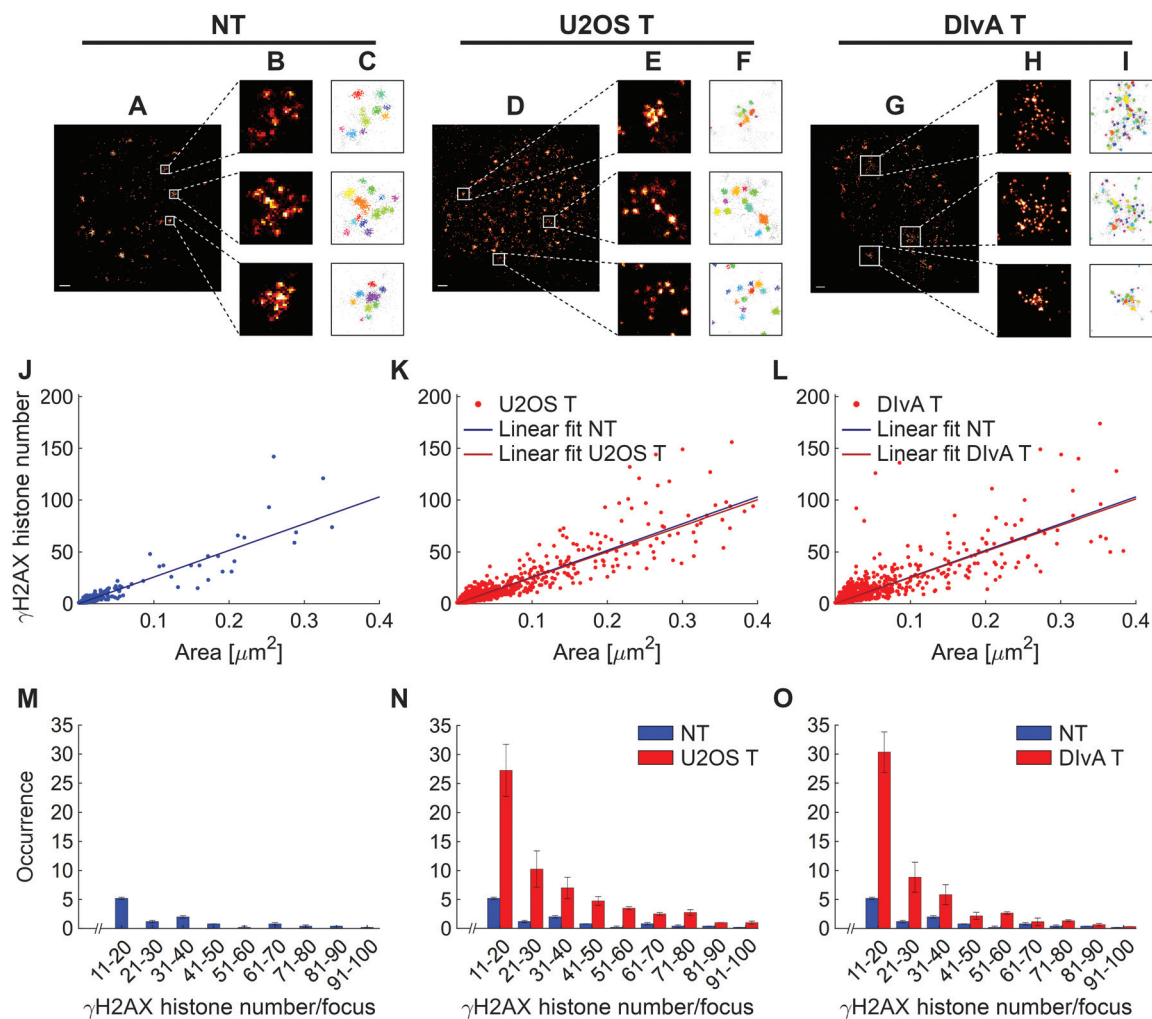
dimensional complexes (Fig. 5A–I). In the representation process each point which localized in proximity ( $N = 8$  and  $\epsilon = 50$  nm) were considered to belong to the same repair focus. The described plots of each condition (U2OS control, NCS treated U2OS and 4-OHT treated DivA cells) are shown in Fig. 5C, F and I. These characterization studies allow a compact and illustrative visualization of specific nanofoci. Based on this plot we could tag the point structures with barcodes, which provides novel possibilities of analysing and categorizing the number of nanofoci structures in cell nuclei (Fig. 5J–L). These representations demonstrate that the endogenous and induced DSBs are covered by approximately 10–50 H2AX S139 phosphorylated histones (Fig. 5M–O).<sup>57,58</sup>

## Discussion

DNA double-strand breaks are one of the most harmful DNA lesions since the dsDNA strand loses its integrity and the improper association of these broken DNA strands could lead to chromosomal rearrangements. During the DSB repair, the chromatin structure is rearranged and H2AX S139 phosphorylation rapidly appears around the damage sites.<sup>5,6,24</sup> These







**Fig. 5** Super-resolved dSTORM images of the entire nuclei of untreated (A) and treated U2OS (D) and DivA (G) cells. Three typical repair foci were selected (B, E and H) and cluster analysed (C, F and I). The number of  $\gamma$ H2AX histones as a function of the area of the repair focus are depicted and fitted by a linear curve (J, K, and L) based on the evaluation of 5 untreated, 4 treated U2OS and 6 treated DivA cells. Histograms of the  $\gamma$ H2AX histone number/focus (M, N and O) using the same data show a similar distribution to the area distribution.

steps allow the efficient recruitment of the repair factors to the damaged DNA regions and affect the choice between the DNA repair pathways. For examining the DSB-induced chromatin changes, confocal microscopy-based techniques are used in most of the studies, although over the last few years the high-throughput chromosome conformation capture technique (4C) and single cell microscopy were utilized to gain detailed insights about the protein interactions and cascades involved in the different repair pathways.<sup>31,59–63</sup> A more detailed overview has raised more questions, which could be answered only at a single-cell level: how the different DNA repair pathways are chosen and how individual repair proteins are regulated to access the DNA repair site. Answering these questions requires a better resolution, most favourably in a single molecule detection level deeply into the mechanistic organization of the orchestrated repair focus. For single molecule detection, the 200–300 nm resolution, which is the limitation of conventional microscopy would not provide

sufficiently detailed image resolution. Recently, G. Legube's laboratory has published detailed information about the chromatin organization of DNA repair foci by using 4C.<sup>59</sup> However, the limitation of the technique is that it shows the average of a given repair focus by combining the data obtained from a large population of cells. Recent applications of electron-microscopy and super-resolution light microscopy<sup>24,30,31,61–63</sup> have demonstrated that it is feasible to study single molecular arrangements within a repair focus. By improving the resolution of microscopy and data evaluation of structures on the meso- and nano-scale level, the search for the best-suited analysis parameters and potentially useful classification criteria of repair foci and damaged chromatin sites has become important.

In this study, we addressed the nano-scale resolution of a single repair focus by the quantitative dSTORM technique in order to reveal the structure of  $\gamma$ H2AX containing repair foci within the nuclear environment. For this, we quantified



numerous parameters, such as the number of fluorophores, and primary and secondary antibodies, which could bind to a single target molecule, *etc.* and we applied these parameters to evaluate the images by using dSTORM based image processing. Using this unconventional procedure we provided 20 nm resolution imaging followed by cluster analysis of various repair foci. However, the quantitative dSTORM technique has been used for studying cellular events, such as cytoskeleton formation in the cytoplasm, and in our study it has been utilized for the first time to study cellular events in the nucleus. By the data we obtained from our quantitative measurements it is one of the first demonstrations of the deep structure of a DNA repair focus, in which a single nucleosome resolution has been obtained together with the nanofoci organization. Our data suggest a looping mechanism, in which approximately twenty S139 phosphorylated H2AX histones are included within a single chromatin sub-domain. Based on the literature data and our experimental results we could estimate that a H2AX S139 phosphorylated histone could be located in one out of ten or twenty nucleosomes, which suggest that a single nanofocus is localized within an approximately 40–50 kb DNA region.<sup>14,30,57,58,64</sup>

Additionally, another important finding of our study is that a single repair focus contains approximately 10 units of  $\gamma$ H2AX enriched nanofoci. However, we could not determine whether it is a single DSB or several broken DNA regions are associated with one repair focus. Nanofoci spatially distribute in the nuclear space according to a pattern that is dependent on the progression of DDR. This pattern recapitulates the previously described repair kinetics, underlying an euchromatin-to-heterochromatin repair trend since it was shown that heterochromatin regions require further structural remodelling before specific DNA repair proteins could assess those regions. These data highlight another mechanism, in which the complex DNA breaks could be associated with repair centres for efficient DNA repair. This question could be answered in the future by using our quantitative dSTORM method.

In conclusion, we could show that dSTORM is the most adequate tool for deep investigation of repair focus formation. We believe that nowadays this is the most appropriate procedure for quantitative analyses of the structural changes of a single repair focus in individual cells at nano-scale resolution. The measurements and the procedure we applied in our study allow ultra-resolution insights into structures and architectures, offering new perspectives for further understanding the mechanisms of chromatin function in DNA repair.

## Materials and methods

### Trajectory fitting algorithms

The exposure time in localization microscopy is matched to the ON state lifetime of individual molecules. However, due to the stochastic feature of the blinking process, a single fluorescent molecule is typically captured in several sequential

frames. Trajectory fitting is an inbuilt algorithm in the rainSTORM localization software that links together photons emitted by the same dye molecule. Localizations on sequential frames which are closer to each other than a preliminary defined acceptance radius are assumed to belong to the same fluorescence dye molecule. As a result, the code calculates the weighted localization coordinates taking into consideration the captured photon numbers. Therefore, the higher the localization precision, the higher the weight factor.<sup>54</sup>

### Determination of cluster density

A Matlab code was written to determine the spatial density of repair foci inside the nuclei using localization data provided by rainSTORM. First the selected nucleus was segmented with a simple and irregular  $N_{\text{polygon}}$ -sided ( $N_{\text{polygon}} \approx 100$ ) polygon using the sum image of the captured frames. The centre of the polygon<sup>65</sup> was calculated and connected to all the vertices of the polygon, and all these lines were segmented into ten equal parts (nine division points). In the next step, ten polygons were formed by the  $n^{\text{th}}$  division points of each line. Repair foci inside the  $i^{\text{th}}$ , but outside the  $(i-1)^{\text{th}}$  polygons were counted and the normalized area repair focus density was calculated in each.

### Implementation of 2D/3D DBSCAN into rainSTORM

A DBSCAN based cluster analysis module was implemented into the rainSTORM program. After the reconstruction of the high resolution (SupRes) image the user can select a region using the box tracking tool, and set the two cluster analysis parameters ( $N_{\text{core}}$ ,  $\epsilon$ ). The program plots and saves data for further evaluation and visualization. Larger areas (entire nuclei *etc.*) can also be selected, but the code automatically segments them into smaller regions to avoid computation fails. After cluster analysis is performed for all sub-regions, the code saves the merged data.

### Experimental determination of bleach rate

The number of cumulative localizations ( $N_{\text{cumulative}}$ ) as a function of time follow an exponential curve the decay of which is proportional to the bleach rate ( $k_{\text{bl}}$ ):

$$N_{\text{cumulative}} = N_0(1 - e^{-k_{\text{bl}}t}),$$

where  $N_0$  is the average number of switching cycles of the fluorophore. The two parameters ( $k_{\text{bl}}$ ,  $N_0$ ) were determined by fitting the theoretical curve to the measured data.

### Statistics of $N_{\text{dye}}$ on independently switching fluorophores

Fluorescence switching was described by a three-state (ON, OFF and bleached) model. The probability of detecting  $n$  blinkings of  $N_{\text{dye}}$  fluorophores is

$$P_{N_{\text{dye}}}(n) = \sum_{x_1+x_2+\dots+x_{N_{\text{dye}}}=n} P_1(x_1)P_1(x_2)\dots P_1(x_{N_{\text{dye}}}),$$

where  $x_i$  gives the blinking number of the  $i$ -th molecule and  $P_1(m)$  is the probability of  $m$  blinkings of a single fluorophore.<sup>46</sup> Due to the assumption that single  $\gamma$ H2AX molecules were





labelled by 4 or 8 fluorophores, the overall probability was given as the linear combination of the probabilities

$$P_{4,8}(m) = a_1 \cdot P_4(m_1) + a_2 \cdot P_8(m_2),$$

where  $m_1 + m_2 = m$  gives the blinking number, and the ratio of  $a_1$  and  $a_2$  parameters can be determined by fitting (see ESI Note 1†).

### Cell lines, media and culture conditions

DiVA cells were cultured at 37 °C in DMEM (Dulbecco's Modified Eagle's Medium, 4.5 g l<sup>-1</sup> glucose, supplemented with L-pyruvate; Lonza,) supplemented with 10% foetal bovine serum (Lonza), 4 mM L-glutamine (Sigma-Aldrich), 1 mM puromycin (Gibco) and 1% antibiotics (Lonza). U2OS osteosarcoma cells were cultured at 37 °C in DMEM (Dulbecco's Modified Eagle's Medium; Lonza) supplemented with 10% foetal bovine serum (Lonza), 4 mM L-glutamine (Sigma-Aldrich) and 1% antibiotics (Sigma-Aldrich).

Both cell lines were grown under standard conditions.

The U2OS cell line was purchased from ATCC, and DiVA cells were provided by G. Legube. All experimental protocols were approved by the guidelines of the University of Szeged and the Medical Research Council.

### Neocarzinostatin (NCS) treatment

U2OS cells were treated with 5 ng ml<sup>-1</sup> concentration of neocarzinostatin and incubated for 15 minutes. Following the treatment, the cells were washed with PBS (phosphate-buffered saline) and incubated in a culture medium for 2 hours.

### 4-Hydroxytamoxifen (4-OHT) treatment

DiVA cells were treated with a 1 μM concentration of 4-OHT and incubated for 2 hours for the nuclear transport of AsiI endonuclease. Following the treatment, the cells were washed with PBS and then immunostained.

### Immunocytochemistry

The cells were washed with PBS and then incubated with CSK buffer 3 times for 3 minutes and once for half minute [10 mM Hepes pH 7.0 (Sigma-Aldrich), 100 mM sucrose (Sigma-Aldrich), 3 mM MgCl<sub>2</sub> (Sigma-Aldrich), 0.7% Triton X-100 (Sigma-Aldrich), 0.3 mg ml<sup>-1</sup> RNase A (Roche)]. The cells were washed twice with PBS, and then fixed with 4% formaldehyde (Sigma-Aldrich) for 10 minutes. The cells were permeabilized with 0.2% Triton X-100/PBS for 5 minutes. After washing steps, the cells were blocked with 5% BSA (Sigma-Aldrich) in PBST [0.1% Tween 20 (Sigma-Aldrich) in PBS], supplemented with the GAR HRP antibody in 1:2000 dilution for 20 minutes. The cells were washed with PBST, and then incubated with primary antibodies diluted in 1% BSA/PBST: anti-γH2AX (Abcam, ab2893) in 1:400 dilution. After washing steps, the following secondary antibody was used: GAR Alexa 647 (Abcam, ab150091) in 1:1500 dilution. After several washing steps with PBST the experiments were conducted after the addition of imaging buffer, which is an aqueous solution

diluted in PBS containing an enzymatic oxygen scavenging system GluOx (2000 U ml<sup>-1</sup> glucose-oxidase (Sigma-Aldrich), 40 000 U ml<sup>-1</sup> catalase (Sigma-Aldrich), 25 mM potassium chloride (Sigma-Aldrich), 22 mM tris(hydroxymethyl)amino-methane (Sigma-Aldrich), 4 mM tris(2-carboxyethyl)phosphine (TCEP) (Sigma-Aldrich)) with 4% (w/v) glucose (Sigma-Aldrich) and 100 mM β-mercaptoethylamine (MEA) (Sigma-Aldrich). The final pH was set to 6.0–8.5.<sup>66–68</sup>

### dSTORM microscopy

We used a Nikon Eclipse Ti-E frame with a Nikon CFI Apochromat TIRF objective (NA 1.49, 100× magnification, oil immersion) for imaging. EPI-fluorescence illumination was applied at an excitation wavelength of 647 nm (2RU-VFL-P-300-647-B1, 300 mW, MPB Communications Ltd). A filter set from Semrock was used in the microscope (Di03-R405/488/561/635-t1-25x36BrightLine® quad-edge quad-edge super-resolution/TIRF dichroic beamsplitter and FF01-446/523/600/677-25BrightLine® quad-band bandpass filter). An Andor iXon3 DU897 EMCCD camera was used for image acquisition (pixel size: 16 μm) with the following acquisition parameters: 30 ms exposure time, EM gain of 100, temperature of –75 °C.

## Author contributions

Conceived the project and designed the experiments: T.P., M.E., H.M., D.V., and Zs.U. Performed the experiments: H.M. and D.V. Analysed the data: H.M., D.V., Zs.U., T.P., and M.E. Contributed reagents/materials/analysis tools: M.E. and T.P. Wrote the paper: T.P., M.E., H.M., D.V., and Zs.U.

## Funding

This research was supported by a grant from the National Research, Development and Innovation Office grants GINOP-2.3.2-15-2016-00020, GINOP-2.3.2-15-2016-00036, the Hungarian Brain Research Program (2017-1.2.1-NKP-2017-00002), the EU-funded Hungarian Grant EFOP-3.6.1-16-2016-00008, and the Tempus Foundation.

## Conflicts of interest

No potential conflicts of interest were disclosed.

## Acknowledgements

We thank Nikolett Barbara Boros, Zoltán Gábor Páhi, Imre M. Boros and Evi Soutoglou for discussion and revisions. We also thank Ivett Berzsenyi and Elvira Czikv Ponyeczkiné for technical assistance.



## References

- 1 A. Ciccia and S. J. Elledge, *Mol. Cell*, 2010, **40**, 179–204.
- 2 S. P. Jackson and J. Bartek, *Nature*, 2009, **461**, 1071–1078.
- 3 A. N. Blackford and S. P. Jackson, *Mol. Cell*, 2017, **66**, 801–817.
- 4 G. Du, G. A. Drexler, W. Friedland, C. Greubel, V. Hable, R. Krucken, A. Kugler, L. Tonelli, A. A. Friedl and G. Dollinger, *Radiat. Res.*, 2011, **176**, 706–715.
- 5 B. Jakob, J. Splinter, S. Conrad, K. O. Voss, D. Zink, M. Durante, M. Lobrich and G. Taucher-Scholz, *Nucleic Acids Res.*, 2011, **39**, 6489–6499.
- 6 Y. Zhang, G. Mate, P. Muller, S. Hillebrandt, M. Krufczik, M. Bach, R. Kaufmann, M. Hausmann and D. W. Heermann, *PLoS One*, 2015, **10**, e0128555.
- 7 N. F. Lowndes and G. W. Toh, *Curr. Biol.*, 2005, **15**, R99–R102.
- 8 V. Turinetto and C. Giachino, *Nucleic Acids Res.*, 2015, **43**, 2489–2498.
- 9 E. P. Rogakou, C. Boon, C. Redon and W. M. Bonner, *J. Cell Biol.*, 1999, **146**, 905–916.
- 10 E. P. Rogakou, D. R. Pilch, A. H. Orr, V. S. Ivanova and W. M. Bonner, *J. Biol. Chem.*, 1998, **273**, 5858–5868.
- 11 R. Ceccaldi, B. Rondinelli and A. D. D'Andrea, *Trends Cell Biol.*, 2016, **26**, 52–64.
- 12 M. Falk, M. Hausmann, E. Lukasova, A. Biswas, G. Hildenbrand, M. Davidkova, E. Krasavin, Z. Kleibl, I. Falkova, L. Jezkova, L. Stefancikova, J. Sevcik, M. Hofer, A. Bacikova, P. Matula, A. Boreyko, J. Vachelova, A. Michaelidesova and S. Kozubek, *Crit. Rev. Eukaryotic Gene Expression*, 2014, **24**, 205–223.
- 13 E. Berkovich, R. J. Monnat Jr. and M. B. Kastan, *Nat. Cell Biol.*, 2007, **9**, 683–690.
- 14 P. Caron, F. Aymard, J. S. Iacovoni, S. Briois, Y. Canitrot, B. Bugler, L. Massip, A. Losada and G. Legube, *PLoS Genet.*, 2012, **8**, e1002460.
- 15 J. S. Iacovoni, P. Caron, I. Lassadi, E. Nicolas, L. Massip, D. Trouche and G. Legube, *EMBO J.*, 2010, **29**, 1446–1457.
- 16 J. A. Kim, M. Kruhlak, F. Dotiwala, A. Nussenzweig and J. E. Haber, *J. Cell Biol.*, 2007, **178**, 209–218.
- 17 A. Meier, H. Fiegler, P. Munoz, P. Ellis, D. Rigler, C. Langford, M. A. Blasco, N. Carter and S. P. Jackson, *EMBO J.*, 2007, **26**, 2707–2718.
- 18 T. Pankotai, C. Bonhomme, D. Chen and E. Soutoglou, *Nat. Struct. Mol. Biol.*, 2012, **19**, 276–282.
- 19 V. Savic, K. B. Sanborn, J. S. Orange and C. H. Bassing, *Cell Cycle*, 2009, **8**, 3285–3290.
- 20 R. Shroff, A. Arbel-Eden, D. Pilch, G. Ira, W. M. Bonner, J. H. Petrini, J. E. Haber and M. Lichten, *Curr. Biol.*, 2004, **14**, 1703–1711.
- 21 B. D. Pope, T. Ryba, V. Dileep, F. Yue, W. Wu, O. Denas, D. L. Vera, Y. Wang, R. S. Hansen, T. K. Canfield, R. E. Thurman, Y. Cheng, G. Gulsoy, J. H. Dennis, M. P. Snyder, J. A. Stamatoyannopoulos, J. Taylor, R. C. Hardison, T. Kahveci, B. Ren and D. M. Gilbert, *Nature*, 2014, **515**, 402–405.
- 22 S. S. Rao, M. H. Huntley, N. C. Durand, E. K. Stamenova, I. D. Bochkov, J. T. Robinson, A. L. Sanborn, I. Machol, A. D. Omer, E. S. Lander and E. L. Aiden, *Cell*, 2014, **159**, 1665–1680.
- 23 M. J. Grant, M. S. Loftus, A. P. Stoja, D. H. Kedes and M. M. Smith, *Proc. Natl. Acad. Sci. U. S. A.*, 2018, **115**, 4992–4997.
- 24 M. Hausmann, E. Wagner, J. H. Lee, G. Schrock, W. Schaufler, M. Krufczik, F. Papenfuss, M. Port, F. Bestvater and H. Scherthan, *Nanoscale*, 2018, **10**, 4320–4331.
- 25 M. Krufczik, A. Sievers, A. Hausmann, J. H. Lee, G. Hildenbrand, W. Schaufler and M. Hausmann, *Int. J. Mol. Sci.*, 2017, **18**, DOI: 10.3390/ijms18051005.
- 26 R. Lopez Perez, G. Best, N. H. Nicolay, C. Greubel, S. Rossberger, J. Reindl, G. Dollinger, K. J. Weber, C. Cremer and P. E. Huber, *FASEB J.*, 2016, **30**, 2767–2776.
- 27 H. Ma, R. Fu, J. Xu and Y. Liu, *Sci. Rep.*, 2017, **7**, 1542.
- 28 K. Prakash, D. Fournier, S. Redl, G. Best, M. Borsos, V. K. Tiwari, K. Tachibana-Konwalski, R. F. Ketting, S. H. Parekh, C. Cremer and U. J. Birk, *Proc. Natl. Acad. Sci. U. S. A.*, 2015, **112**, 14635–14640.
- 29 S. Britton, J. Coates and S. P. Jackson, *J. Cell Biol.*, 2013, **202**, 579–595.
- 30 F. Natale, A. Rapp, W. Yu, A. Maiser, H. Harz, A. Scholl, S. Grulich, T. Anton, D. Horl, W. Chen, M. Durante, G. Taucher-Scholz, H. Leonhardt and M. C. Cardoso, *Nat. Commun.*, 2017, **8**, 15760.
- 31 J. Reindl, S. Girst, D. W. Walsh, C. Greubel, B. Schwarz, C. Siebenwirth, G. A. Drexler, A. A. Friedl and G. Dollinger, *Sci. Rep.*, 2017, **7**, 40616.
- 32 E. Bobkova, D. Depes, J.-H. Lee, L. Jezkova, I. Falkova, E. Pagacova, O. Kopečna, M. Zadneprianetc, A. Bacikova and E. Kulikova, *Int. J. Mol. Sci.*, 2018, **19**, 3713.
- 33 A. Hofmann, M. Krufczik, D. Heermann and M. Hausmann, *Int. J. Mol. Sci.*, 2018, **19**, 2263.
- 34 J. Folling, M. Bossi, H. Bock, R. Medda, C. A. Wurm, B. Hein, S. Jakobs, C. Eggeling and S. W. Hell, *Nat. Methods*, 2008, **5**, 943–945.
- 35 M. J. Rust, M. Bates and X. Zhuang, *Nat. Methods*, 2006, **3**, 793–795.
- 36 M. Sauer, *J. Cell Sci.*, 2013, **126**, 3505–3513.
- 37 E. Betzig, G. H. Patterson, R. Sougrat, O. W. Lindwasser, S. Olenych, J. S. Bonifacino, M. W. Davidson, J. Lippincott-Schwartz and H. F. Hess, *Science*, 2006, **313**, 1642–1645.
- 38 B. Huang, W. Wang, M. Bates and X. Zhuang, *Science*, 2008, **319**, 810–813.
- 39 W. E. Moerner, *Angew. Chem., Int. Ed.*, 2015, **54**, 8067–8093.
- 40 A. M. Bittel, A. Nickerson, I. S. Saldivar, N. J. Dolman, X. Nan and S. L. Gibbs, *Sci. Rep.*, 2016, **6**, 29687.
- 41 F. Fricke, J. Beaudouin, R. Eils and M. Heilemann, *Sci. Rep.*, 2015, **5**, 14072.
- 42 K. S. Grussmayer, A. Kurz and D. P. Herten, *ChemPhysChem*, 2014, **15**, 734–742.



- 43 R. Jungmann, M. S. Avendano, M. Dai, J. B. Woehrstein, S. S. Agasti, Z. Feiger, A. Rodal and P. Yin, *Nat. Methods*, 2016, **13**, 439–442.
- 44 C. L. Kruger, M. T. Zeuner, G. S. Cottrell, D. Widera and M. Heilemann, *Sci. Signaling*, 2017, **10**, DOI: 10.1126/scisignal.aan1308.
- 45 S. H. Lee, J. Y. Shin, A. Lee and C. Bustamante, *Proc. Natl. Acad. Sci. U. S. A.*, 2012, **109**, 17436–17441.
- 46 R. P. Nieuwenhuizen, M. Bates, A. Szymborska, K. A. Lidke, B. Rieger and S. Stallinga, *PLoS One*, 2015, **10**, e0127989.
- 47 P. Caron, J. Choudhary, T. Clouaire, B. Bugler, V. Daburon, M. Aguirrebengoa, T. Mangeat, J. S. Iacovoni, A. Álvarez-Quilón and F. Cortés-Ledesma, *Cell Rep.*, 2015, **13**, 1598–1609.
- 48 A. Kalousi, A. S. Hoffbeck, P. N. Selemenakis, J. Pinder, K. I. Savage, K. K. Khanna, L. Brino, G. Dellaire, V. G. Gorgoulis and E. Soutoglou, *Cell Rep.*, 2015, **11**, 149–163.
- 49 C. Lemaitre, A. Grabarz, K. Tsouroula, L. Andronov, A. Furst, T. Pankotai, V. Heyer, M. Rogier, K. M. Attwood, P. Kessler, G. Dellaire, B. Klaholz, B. Reina-San-Martin and E. Soutoglou, *Genes Dev.*, 2014, **28**, 2450–2463.
- 50 D. Sisario, S. Memmel, S. Doose, J. Neubauer, H. Zimmermann, M. Flentje, C. S. Djuzenova, M. Sauer and V. L. Sukhorukov, *FASEB J.*, 2018, **32**(12), 6469–6477.
- 51 M. Ester, H.-P. Kriegel, J. Sander and X. Xu, Presented in part at the Proceedings of the Second International Conference on Knowledge Discovery and Data Mining, Portland, Oregon, 1996.
- 52 A. Janssen, G. A. Breuer, E. K. Brinkman, A. I. van der Meulen, S. V. Borden, B. van Steensel, R. S. Bindra, J. R. LaRocque and G. H. Karpen, *Genes Dev.*, 2016, **30**, 1645–1657.
- 53 L. Nahidiazar, A. V. Agronskaia, J. Broertjes, B. van den Broek and K. Jalink, *PLoS One*, 2016, **11**, e0158884.
- 54 A. O. I. Group, rainSTORM user guide, [http://titan.physx.u-szeged.hu/~adoptim/?page\\_id=582%20?](http://titan.physx.u-szeged.hu/~adoptim/?page_id=582%20?), (accessed 30 Mar, 2019).
- 55 C. R. Bauer, *Methods Mol. Biol.*, 2014, **1131**, 543–548.
- 56 G. T. Dempsey, J. C. Vaughan, K. H. Chen, M. Bates and X. Zhuang, *Nat. Methods*, 2011, **8**, 1027–1036.
- 57 L. Vian, A. Pękowska, S. S. P. Rao, K. R. Kieffer-Kwon, S. Jung, L. Baranello, S. C. Huang, L. El Khattabi, M. Dose, N. Pruet, A. L. Sanborn, A. Canela, Y. Maman, A. Oksanen, W. Resch, X. Li, B. Lee, A. L. Kovalchuk, Z. Tang, S. Nelson, M. Di Pierro, R. R. Cheng, I. Machol, B. G. St Hilaire, N. C. Durand, M. S. Shamim, E. K. Stamenova, J. N. Onuchic, Y. Ruan, A. Nussenzweig, D. Levens, E. L. Aiden and R. Casellas, *Cell*, 2018, **173**, 1165–1178.
- 58 W. Xiang, M. J. Roberti, J. K. Heriche, S. Huet, S. Alexander and J. Ellenberg, *J. Cell Biol.*, 2018, **217**, 1973–1984.
- 59 F. Aymard, M. Aguirrebengoa, E. Guillou, B. M. Javierre, B. Bugler, C. Arnould, V. Rocher, J. S. Iacovoni, A. Biernacka, M. Skrzypczak, K. Ginalski, M. Rowicka, P. Fraser and G. Legube, *Nat. Struct. Mol. Biol.*, 2017, **24**, 353–361.
- 60 B. Bintu, L. J. Mateo, J. H. Su, N. A. Sinnott-Armstrong, M. Parker, S. Kinrot, K. Yamaya, A. N. Boettiger and X. Zhuang, *Science*, 2018, **362**, DOI: 10.1126/science.aau1783.
- 61 M. Bach, C. Savini, M. Krufczik, C. Cremer, F. Rosl and M. Hausmann, *Int. J. Mol. Sci.*, 2017, **18**, DOI: 10.3390/ijms18081726.
- 62 J. P. Eberle, A. Rapp, M. Krufczik, M. Eryilmaz, M. Gunkel, H. Erfle and M. Hausmann, *Methods Mol. Biol.*, 2017, **1663**, 1–13.
- 63 M. Eryilmaz, E. Schmitt, M. Krufczik, F. Theda, J. H. Lee, C. Cremer, F. Bestvater, W. Schaufler, M. Hausmann and G. Hildenbrand, *Cancers*, 2018, **10**.
- 64 J. Bewersdorf, B. T. Bennett and K. L. Knight, *Proc. Natl. Acad. Sci. U. S. A.*, 2006, **103**, 18137–18142.
- 65 P. Bose and G. Toussaint, Computing the constrained Euclidean, geodesic and link centre of a simple polygon with applications, Proceedings of CG International'96, IEEE, 1996.
- 66 P. Tinnefeld, C. Eggeling and S. W. Hell, *Far-Field Optical Nanoscopy*, 2015.
- 67 P. Schafer, S. van de Linde, J. Lehmann, M. Sauer and S. Doose, *Anal. Chem.*, 2013, **85**, 3393–3400.
- 68 S. van de Linde, A. Loschberger, T. Klein, M. Heidebreder, S. Wolter, M. Heilemann and M. Sauer, *Nat. Protoc.*, 2011, **6**, 991–1009.

