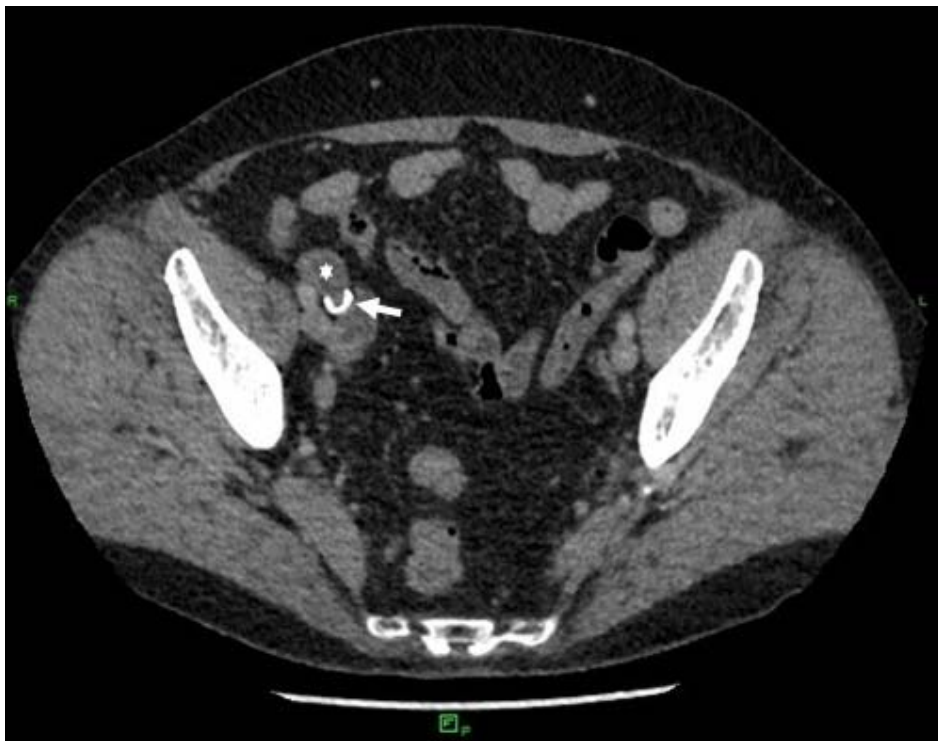


Supplementary Fig. 1. Abdominal computed tomography (sagittal image): appendicolithiasis (arrow) with focal thickening and obstructive dilatation of the appendix (star).



Supplementary Fig. 2. Abdominal computed tomography (axial image): appendicolithiasis (arrow) with focal thickening and obstructive dilatation of the appendix (star).