

PAPER

Tuning the degree of CO₂ activation by carbon doping Cu_n⁻ (n = 3–10) clusters: an IR spectroscopic study†

Olga V. Lushchikova,^{ab} Máté Szalay,^c Tibor Höltzl^{id}^c
and Joost M. Bakker^{id}^{*a}

Received 16th June 2022, Accepted 19th August 2022

DOI: 10.1039/d2fd00128d

Copper clusters on carbide surfaces have shown a high catalytic activity towards methanol formation. To understand the interaction between CO₂ and the catalytically active sites during this process and the role that carbon atoms could play in this, they are modeled by copper clusters, with carbon atoms incorporated. The formed clusters Cu_nC_m⁻ (n = 3–10, m = 1–2) are reacted with CO₂ and investigated by IR multiple-photon dissociation (IR-MPD) spectroscopy to probe the degree of CO₂ activation. IR spectra for the reaction products [Cu_nC·CO₂]⁻, (n = 6–10), and [Cu_nC₂·CO₂]⁻, (n = 3–8) are compared to reference spectra recorded for products formed when reacting the same cluster sizes with CO, and with density functional theory (DFT) calculated spectra. The results reveal a size- and carbon load-dependent activation and dissociation of CO₂. The complexes [Cu_nC·CO₂]⁻ with n = 6 and 10 show predominantly molecular activation of CO₂, while those with n = 7–9 show only dissociative adsorption. The addition of the second carbon to the cluster leads to the exclusive molecular activation of the CO₂ on all measured cluster sizes, except for Cu₅C₂⁻ where CO₂ dissociates. Combining these findings with DFT calculations leads us to speculate that at lower carbon-to-metal ratios (CMRs), the C can act as an oxygen anchor facilitating the OC=O bond rupture, whereas at higher CMRs the carbon atoms increasingly attract negative charge, reducing the Cu cluster's ability to donate electron density to CO₂, and consequently its ability to activate CO₂.

Introduction

The continuous growth of carbon emissions has led, and continues to lead, to an accumulation of CO₂ in the atmosphere, and the concomitant global warming. To

^aRadboud University, Institute for Molecules and Materials, FELIX Laboratory, Toernooiveld 7, 6525 ED Nijmegen, The Netherlands. E-mail: joost.bakker@ru.nl

^bInstitut für Ionenphysik und Angewandte Physik, Universität Innsbruck, Technikerstraße 25, 6020 Innsbruck, Austria

^cFurukawa Electric Institute of Technology, Késmárk Utca 28/A, 1158 Budapest, Hungary

† Electronic supplementary information (ESI) available. See <https://doi.org/10.1039/d2fd00128d>

1 mitigate this, an urgent solution is needed to reduce atmospheric CO₂ concen-
trations. At the same time, CO₂ is the largest carbon source on Earth, and it could
be used as a feedstock for many valuable chemicals, such as alcohols and other
5 higher hydrocarbons. The bottleneck lies in the high kinetic and thermal stability
of the CO₂ molecule, expressed in the C=O bond energy of more than 7 eV.¹

One promising way for CO₂ utilization is its hydrogenation to simple alcohols
like methanol. Industrially this process takes place over a Cu/ZnO/Al₂O₃ catalyst
at temperatures of 200–300 °C and pressures of 50–100 bar.² The energy required
to drive this reaction leads to additional CO₂ emissions and elevated costs, while
10 the one-pass selectivity towards methanol formation is rather low, with larger
concentrations of CO and H₂O formed. Thus, for direct CO₂ conversion, a catalyst
is required which can adsorb and activate CO₂ without breaking C–O bonds.
Many different catalyst materials have been tested to reduce reaction tempera-
tures and increase the methanol yield.

One issue that seems not to affect relatively well-functioning CO₂ hydrogenation
catalysts is poisoning due to coke formation, a process that hampers the
reverse reaction during methanol decomposition.³ Rather, metal carbide catalyst
materials have shown enhanced activity in CO₂ activation. This enhancement has
20 been rationalized by increased catalyst stability upon adding carbon to the metal,
and by the modification of the metal's electronic and structural properties,
changing its catalytic activity.^{4,5} Transition metal carbides (TMCs) have even
demonstrated chemical activity similar, and sometimes even better, than that of
the platinum group metals in the transformation of hydrocarbons and oxygen-
containing molecules.^{6–8} TMCs are also considered to be promising catalysts for
25 CO₂ conversion by H₂.⁸ However, experimentally, it was shown that, for example,
Mo₂C is quite aggressive and leads to CO₂ dissociation, forming CO and H₂O, *via*
the reverse water gas shift (rWGS) reaction.^{9,10} Based on density functional theory
(DFT) calculations, it is suggested that Mo₈C₁₂ nanoparticles are better catalysts,
30 considering their high stability and moderate chemical activity in comparison to
that of bulk Mo (too low) and Mo₂C (too high).¹¹ Similar conclusions were drawn
for Ti carbides.¹¹ Some transition metal catalysts with a carbon-to-metal (C/M)
ratio below 1 easily break the C–O bond leading to CO formation.^{6,7} An increase
in carbon content may enhance catalyst stability, it also leads to a decrease of the
35 chemical activity, for instance observed for TiC and MoC, due to the ligand effect
expressed in a downshift of the metal d-band center affecting the charge transfer
from the metal to CO and, thus, also adsorption energy.^{7,11–13} Accordingly, the
activity of a metal carbide catalyst towards CO₂ dissociation can be tuned by
varying the C/M ratio of the catalyst.¹⁴

TMC catalytic activity can also be altered by the deposition of other metals on
the TMC surface.^{5,7,10,14} Cu-promoted carbides exhibit enhanced selectivity
towards methanol formation in comparison to both bare copper and bare TMC
surfaces, like TaC, SiC, TiC, Mo₂C, and MoC.^{5,7,14} It is also pointed out that the Cu–
45 TMCs interface plays a crucial role. The hydrogenation of the reaction interme-
diates, such as HCO and H₂CO, is energetically more favorable on the Cu sites,
making small Cu clusters more suitable catalysts for methanol formation.^{5,14} Cu₄/
TiC has an even higher CO₂ adsorption energy, and therefore methanol formation
rate, than the commercial Cu/ZnO catalyst.^{5,15,16} However, most Cu/TMC catalyzed
50 reactions proceed *via* CO formation and its subsequent hydrogenation, rather
than *via* direct CO₂ hydrogenation and a formate intermediate, as is the widely

1 accepted reaction pathway over Cu catalysts.² The high selectivity towards CO
results in an elevated CO yield at the expense of methanol production. Therefore,
it is important to understand what the direct influence of carbon is on the
deposited clusters and how it influences CO₂ activation.

5 The fine details of a reaction proceeding on the active sites can be studied at
the molecular level using isolated clusters. Mass-selective gas-phase spectroscopy
allows studying the interaction of CO₂ with clusters of well-defined elemental
composition. For example, photoelectron and IR spectroscopy have been used to
study the interaction between CO₂ and metal anions.^{17–27} This interaction can be
10 characterized by four binding motifs: bidentate (η^2), metal formate, oxalate, and
dissociative adsorption. The variety in CO₂ adsorption motifs is related to the
difference in the degree of electron transfer from the metal center into the anti-
bonding $2\pi_u$ LUMO of CO₂.²⁸ For Cu[−] and other coinage metal ions in particular,
it was found that CO₂ binds in a formate-like fashion, where the metal ion
15 replaces the hydrogen.^{17,19} The reaction of CO₂ with isolated anionic metal clusters
was also studied with flow tube reactor mass spectrometry,^{29,30} and IR spec-
troscopy.^{31,32} The nature of CO₂ adsorption on these clusters appears to be size-
dependent, for example on Pt_{*n*}[−] clusters, where Pt₄[−] shows CO₂ activation,
whereas Pt₅[−], Pt₆[−] and Pt₇[−] show dissociation.³¹ Another example is Co_{*n*}[−], where
20 the Co[−] ion binds two CO₂ molecules in a bidentate configuration,²⁷ and clusters
with *n* > 7 dissociate CO₂.³²

In this work, we investigate how the carbon doping of anionic Cu clusters will
influence the degree of CO₂ activation, where the anionic charge state was chosen
25 to facilitate electron transfer to the CO₂ molecule. Anionic copper clusters con-
taining 5–10 Cu atoms were doped with one or two C atoms and reacted with CO₂.
The formed [Cu_{*n*}C_{*m*}·CO₂][−] species, with *n* = 3–10 and *m* = 1–2, were studied by
mass-selective IR spectroscopy. The obtained spectra are compared to reference
IR spectra of the clusters reacted with CO and with DFT calculated spectra.

30 Methods

The experiment is shown schematically in Fig. 1. Carbon-doped anionic copper
clusters Cu_{*n*}C_{*m*}[−] are produced in a Smalley-type laser ablation source.³³ An
35 isotopically enriched Cu-65 (99.9%) target is ablated by the second harmonic of
a focused Nd:YAG laser (532 nm, 14 mJ) in the presence of a He carrier gas that is
injected by a pulsed valve (General Valve series 9, stagnation pressure 6 bar).
Carbon-doped copper clusters were formed due to the presence of trace carbon
in the carrier gas. The formed clusters are reacted with CO₂ or CO by injecting
40 the pure gases through a second pulsed valve with a 1 bar stagnation pressure
into an extension of the clustering channel. The Cu_{*n*}C_{*m*}[−] clusters react with CO₂
or CO at room temperature in a reaction channel, forming [Cu_{*n*}C_{*m*}·CO₂][−] or
[Cu_{*n*}C_{*m*}·CO][−] complexes with *n* = 3–10, and *m* = 1–2. The bracket notation
implies that no prior knowledge of the adsorption form of CO or CO₂ is
45 assumed. The gas mixture of helium and clusters is expanded into vacuum,
forming a molecular beam that is collimated by a 2 mm diameter skimmer and
an 8 × 2 mm slit aperture. The ions are then irradiated by IR laser light, and
subsequently pulse-extracted by high voltage plates into an orthogonal time-of-
50 flight mass spectrometer (TOF-MS), where they are mass separated and detected
by a multichannel plate (MCP) detector. For the spectroscopic experiments, the

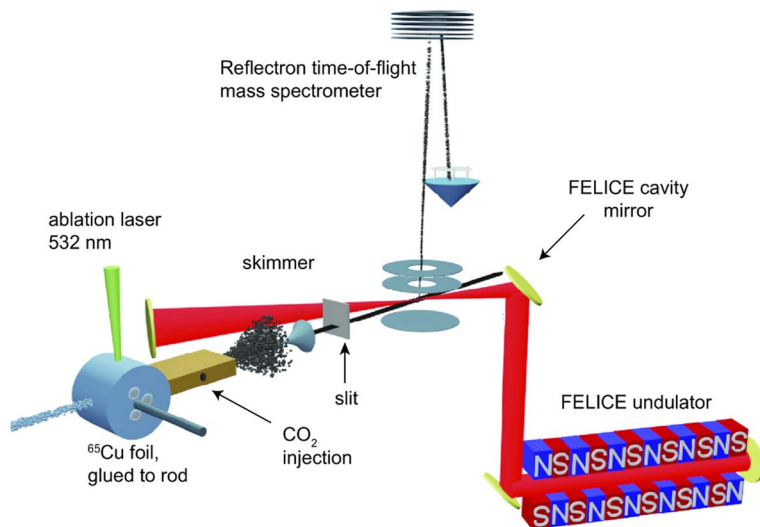


Fig. 1 Schematic of experimental setup.

molecular beam overlaps between the extraction plates at a 35° angle with the IR laser beam of the free-electron laser for intracavity experiments (FELICE).³⁴ IR light is produced in the form of macropulses, consisting of an approximately 10 μs pulse train of transform-limited ps duration micropulses, and is characterized by a spectral bandwidth of $\sim 0.7\%$ of the central frequency. The frequency range covered in this work is $320\text{--}2120\text{ cm}^{-1}$, with typical macropulse energies of $0.06\text{--}0.8\text{ J}$, and fluences of $0.7\text{--}6.1\text{ J cm}^{-2}$. The experiment is operated at twice the IR laser frequency, and mass spectra with and without irradiation are recorded to correct for the fluctuations during cluster production. IRMPD spectra are obtained by calculating the depletion yield $Y(\nu)$ at frequency ν , defined as:

$$Y(\nu) = -\ln\left(\frac{I_{\text{on}}(\nu)}{I_{\text{off}}}\right) / P,$$

where $I_{\text{on}}(\nu)$ is the ion intensity of the irradiated complex, I_{off} the ion intensity without irradiation, and P the macropulse energy. Spectra displaying the depletion $I_{\text{on}}(\nu)/I_{\text{off}}$ can be found in Fig. S1† of the ESI.

For the structural assignment of selected spectra (for Cu_6C^- and Cu_7C^-), DFT calculations of different isomers were done using the Q-Chem 5.3 program package.³⁵ Stable structures were identified with in-house code and optimized at the TPSSh/def2-TZVP + D3 level of theory.³⁶ A detailed description of the search procedure is given in the ESI.† This combination of functional, basis set and dispersion correction was chosen to be able to directly compare the results with our previous work on the adsorption of CO_2 on cationic Cu clusters,³⁷ where adsorption was limited to physisorption. The accuracy of this method was carefully evaluated compared to a CCSD(T)/def2-QZVPPD benchmark.³⁷ In other studies it has been found that the precise mode of physisorption found in these calculations can markedly be influenced by the choice of dispersion correction.³⁸

1 However, since the interaction for the species under study here is significantly
stronger, as seen by the activated and dissociated products discussed below, we
believe that these influences are not decisive here. This is confirmed by further
5 DFT based computations with D3 or D4 and without dispersion correction (Table
S1 in the ESI†).

Only the lowest spin multiplicities were considered in the calculations, so
doublet for Cu_6C^- , and singlet for Cu_7C^- . Harmonic vibrational frequencies of
these structures are convoluted with 20 cm^{-1} Gaussian line shape function and
10 compared to the experimental data for final assignment. No frequency scaling has
been applied for the comparison.

Results and discussion

15 To understand how CO_2 binds to anionic carbon-doped copper clusters, IRMPD
spectra of products formed upon reacting Cu_nC_m^- ($n = 3-10$) with different
carbon loading $m = 1-2$ are recorded. A mass spectrum of all species formed is
shown in Fig. 2. From this figure, one can see that for each size n , a distribution of
 Cu_nC_m^- clusters is formed, that for larger clusters ($n \geq 9$) is essentially limited to
20 $m = 0-3$. Pure Cu_n^- clusters are lower in intensity than the carbon doped clusters,
which we attribute to a more facile formation of a CuC^- seed as a nucleation core
than Cu_2^- .

25 In the inset, a close-up of the mass spectrum in the region close to Cu_6^-
and Cu_7^- is shown, with individual mass peaks corresponding to Cu_nC_m^- .
4 $m(\text{CO}_2)_p^-$ labeled by (m and n) or (m , n and p). It can be seen that the pure Cu
clusters are produced in this mass spectral region too, albeit at lower intensi-
ty than the Cu_nC^- , Cu_nC_2^- , and Cu_nC_3^- signals. Unfortunately, CO_2
adsorption on the pure Cu_n^- clusters is negligible, precluding spectroscopic
30 characterization.

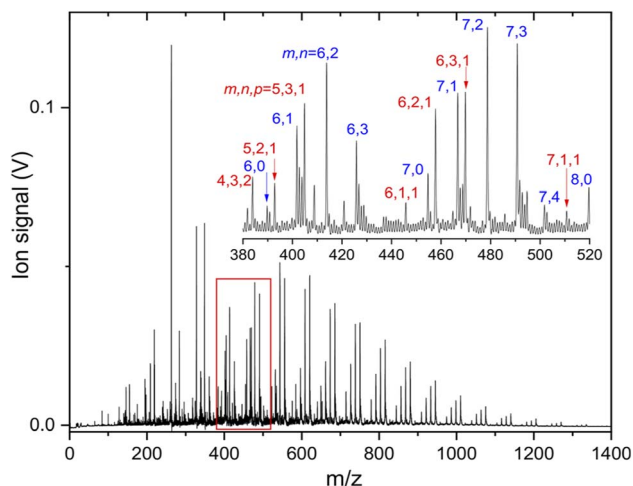


Fig. 2 Mass spectrum of the products formed when reacting anionic Cu_nC_m^- clusters with CO_2 . Mass peaks in the inset are labeled by (m and n) or (m , n , and p) for $\text{Cu}_n\text{C}_m(\text{CO}_2)_p^-$.

CO₂ activation by Cu_nC⁻

The IRMPD spectra of low-carbon loading products [Cu_nC·CO₂]⁻ ($n = 6-10$) are shown in Fig. 3 (panels a–e). The complexes with $n = 7-9$ show only one main band around 2000 cm⁻¹, which is fairly close to the frequency of the free C–O stretch vibration at 2143 cm⁻¹.³⁹ We can thus speculate that these cluster sizes adsorb CO₂ dissociatively, leading to the formation of CO. In contrast, the spectra of complexes with $n = 6$ and 10 are dominated by two bands around 720 and 1630 cm⁻¹, with a weaker band visible around 1100 cm⁻¹. Earlier, experimental IR studies of the CO₂⁻ radical embedded in alkali halide matrices have revealed a characteristic band at 1671 cm⁻¹.⁴⁰ The presence of a band in this region in the IRMPD spectra suggests that Cu_nC⁻ clusters with $n = 6$ and 10 induce a distortion of CO₂, activating it. Bands at similar frequencies were observed when the Pt₄ ion was reacted with CO₂, which was also concluded to lead to activation.³¹

From here, we focus on the species [Cu_nC·CO₂]⁻ with $n = 6$ and 7 since their spectra are representative of two modes of adsorption, activated and dissociated. The suspicion that CO₂ adsorbs dissociatively on CCu₇⁻ can be verified by reference spectra of carbon monoxide (CO) adsorbed to Cu₇C⁻, which is is

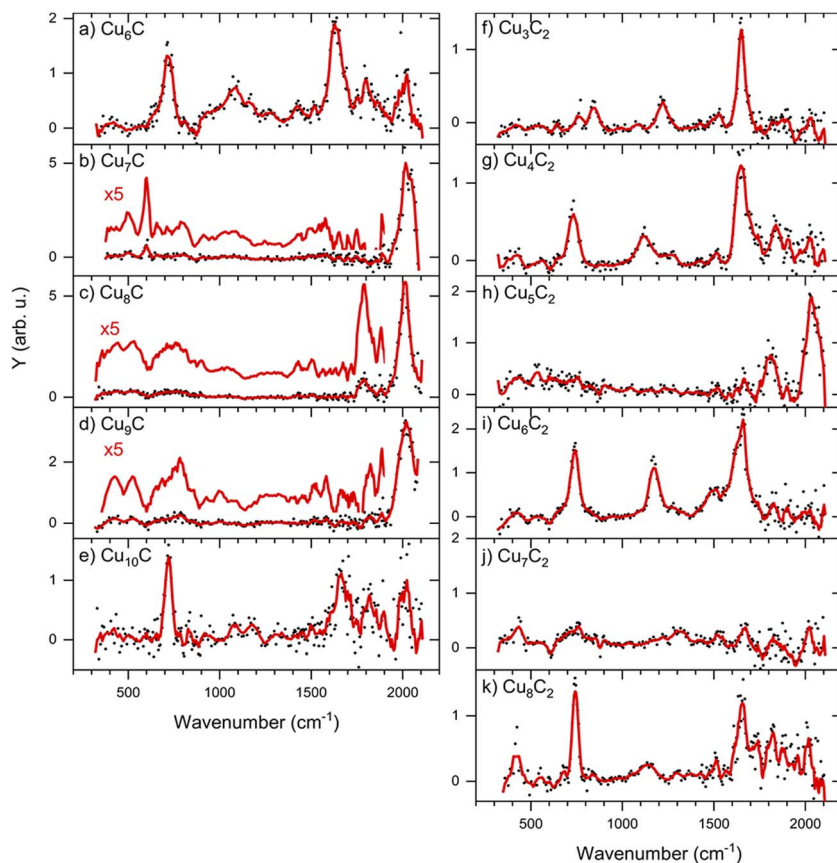


Fig. 3 IRMPD spectra of [Cu_nC·CO₂]⁻ (left) and [Cu_nC₂·CO₂]⁻ (right). The red lines are five-point adjacent-averages of the solid dots.

1 compared to the IRMPD spectrum of $[\text{Cu}_7\text{C}\cdot\text{CO}_2]^-$ in Fig. 4b (second panel from
the top). For this, we reacted the clusters with CO and recorded IRMPD spectra in
the $650\text{--}2100\text{ cm}^{-1}$ range for the $[\text{Cu}_n\text{C}\cdot\text{CO}]^-$ ($n = 4\text{--}10$) species formed. The
5 resulting spectra for all measured cluster sizes are dominated by a strong band
around 2020 cm^{-1} , characteristic for the C–O stretch. This band shows an
excellent agreement with the bands observed when Cu_7C^- is reacted with CO_2
(Fig. 4b, top panel), confirming the hypothesis that CO_2 adsorbs dissociatively on
 Cu_nC^- ($n = 7\text{--}9$). In contrast, the mismatch between spectra for $[\text{Cu}_6\text{C}\cdot\text{CO}_2]^-$ and
10 $[\text{Cu}_6\text{C}\cdot\text{CO}]^-$ (Fig. 4a) suggests that CO_2 adsorbs predominantly molecularly on
 Cu_6C^- and, by extension, also on Cu_{10}C^- .

DFT calculations were performed to further interpret these observations. For
this, we first searched for bare Cu_nC_m^- clusters. In our global optimization
routine, we have identified the lowest energy structures shown in Fig. 5. The
lowest energy structures found are not unlike those predicted for the pure clusters.
15 Cu_6C^- is similar to the predicted Cu_6^- octahedron,⁴¹ with the C substituting

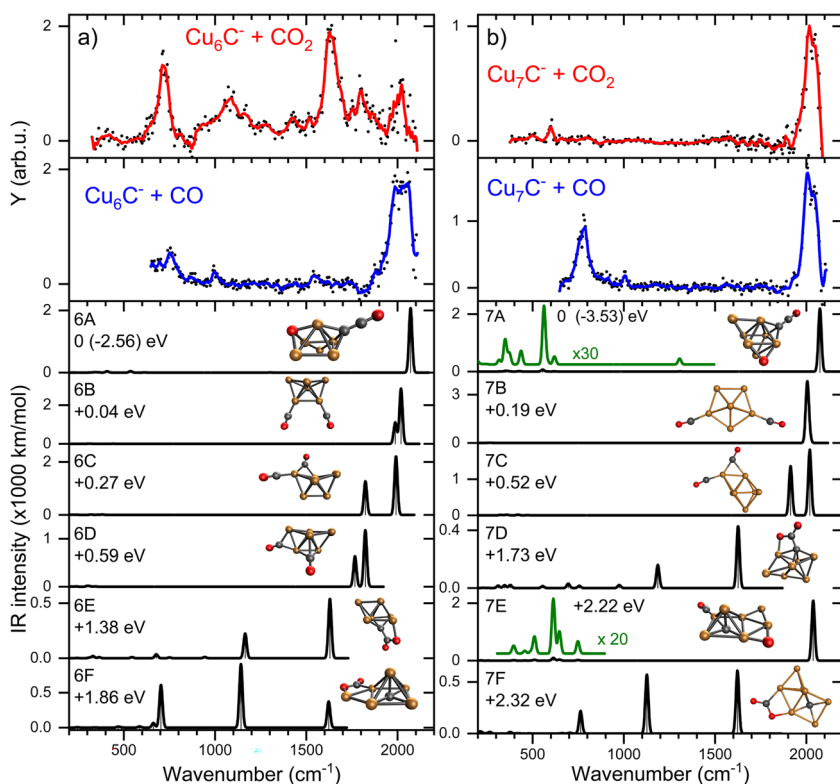


Fig. 4 IRMPD spectra of: (a) Cu_6C^- , and (b) Cu_7C^- , reacted with CO_2 (red) and CO (blue), and calculated spectra (black) of the lowest energy structure. All calculated spectra are convoluted with a 20 cm^{-1} FWHM Gaussian line shape function, and are accompanied by the geometrical structure (Cu, C and O atoms represented by orange, black and red spheres) and relative energy. The green curves are vertical zooms with the multiplication factors indicated. The CO_2 binding energy is given for the putative ground state, relative energies for other isomers.

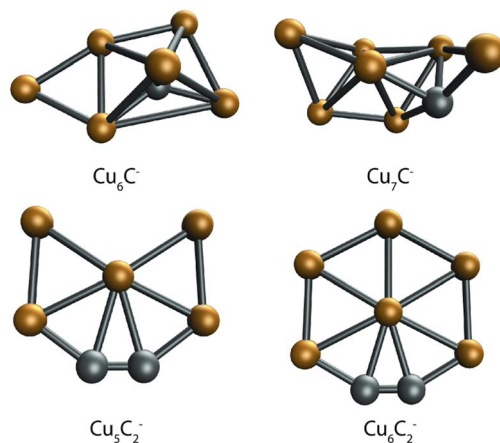


Fig. 5 Lowest energy structures of the single C-doped clusters Cu_6C^- and Cu_7C^- , and double C-doped clusters Cu_5C_2^- and Cu_6C_2^- .

one of the Cu atoms in the octahedron, and the sixth Cu atom bound to one of the Cu–Cu edges. Cu_7C^- looks like the boat structure proposed for Cu_6^- ,⁴² with a C bound on a hollow site, and the last Cu atom bound both to the Cu–Cu edge and to the C atom. Interestingly, the structures for Cu_5C_2^- and Cu_6C_2^- are planar and are similar to the structure predicted for pure Cu_5^- , a 2D trapezoid.^{41,42} In both clusters, the C atoms are bound together in a C_2 unit that forms one corner of a planar hexagon for Cu_6C_2^- , with one Cu atom missing for Cu_5C_2^- .

Using the structures found for the bare clusters, a search was done for structures of the reaction product of Cu_6C^- and Cu_7C^- . An extensive search has identified over sixty stable structures for each species. Many of these structures have a similar binding motif of C and O atoms to the cluster leading to only minor differences in IR spectra, which are indistinguishable in the currently applied experimental method. Therefore, the structures were grouped, first using their spectral properties only. Visual inspection of all structures per group allowed to conclude that they all shared similar binding motifs. For the CO_2 reaction products with Cu_6C^- , sixteen unique spectral patterns were identified, for Cu_7C^- only nine. The spectra of the lowest energy representative from each group are compared to the experimental data in Fig. S2.† A selection of the most promising candidates is shown in Fig. 4 (black traces).

In the search, structures are found both with dissociated and molecular CO_2 , where structures with CO_2 dissociated are generally lowest in energy. The spectra of structures with dissociated CO_2 are dominated by high-frequency bands originating from the C–O stretch vibration(s), with frequencies ranging from 1800–2100 cm^{-1} , depending on the binding site of the CO. Spectra of clusters with molecularly bound CO_2 have multiple bands typically at the lower frequencies associated with the CO_2 bending mode, and the C–O_{bound} and C–O_{free} stretch.

For both $n = 6$ and 7, the largest number of structures found is with CO_2 dissociatively adsorbed, where CO is bound in an on-top configuration (μ^1) to a Cu atom, and the O eliminated from CO_2 bound to another Cu; an example is structure 7E. However, this binding motif is not the energetically most favorable

1 lying at least 1.78 (2.19) eV higher in energy for $n = 6$ (7) than the lowest energy
structure. We attribute this simply to a computational sampling effect, where the
probability to find a Cu atom in a Cu_6C^- cluster is six times higher than finding
a C atom.

5 For $n = 6$, the spectra of structures from this most populated group are very
similar to that of structure 6A, the lowest energy structure, whereas this has
a different structural motif. In structure 6A, the cluster structure contains a Cu_5
square pyramid, with the sixth Cu bridge-bound (μ^2) to one of the edges, and the C
10 bound to a hollow (μ^3) Cu_3 site. Of the dissociated CO_2 , the CO is μ^1 -bound to the
cluster's C atom, forming a linear C–C–O moiety, and the O to a hollow Cu site.
The spectrum has its main band, the CO stretch vibration, close to 2100 cm^{-1} , or
blue-shifted from the observed band frequency by about 60 cm^{-1} . The same motif
of CO binding to the lone C is found for the lowest energy group for $n = 7$ (*e.g.*
15 structure 7A). 7A is a Cu_6 octahedron capped by the seventh Cu and the C, both in
 μ^3 configuration. The CO_2 is dissociated with the single O capping a third octa-
hedron plane, and the CO bound to the C dopant.

For both $n = 6$ and 7 the second group (*e.g.* 6B and 7B) is formed by structures
where CO_2 dissociation leads to an O atom migrating to the C dopant atom,
20 forming two CO molecules that are μ^1 -bound to a Cu. For 6B this is in the form of
a Cu_6 boat structure with the CO molecules attached to the bow and the stern,
while for 7B it is a Cu_7 pentagonal bipyramid. The frequencies of both CO stretch
vibrations are close to each other resulting in one merged vibrational band, which
is found at frequencies of about 2000 cm^{-1} , slightly lower than that for the C–C–O
25 group in 6A and 7A. Group 3 (*e.g.* 6C/7C) is characterized by two CO molecules,
with one μ^1 - and the other μ^2 -bound. In 7C, the same capped octahedron is
recognized, with the bridge-bound CO close to the on-top CO. In this case, two
distinct C–O stretch bands are seen, one around 2000 cm^{-1} for the μ^1 bound CO,
and one around 1900 cm^{-1} for the μ^2 bound CO. For $n = 6$, group 4 has COs
30 bound in μ^2 and μ^3 configurations, with again clearly two distinct bands, now at
 1800 and 1900 cm^{-1} , consistent with a weakening of the C–O bond when it
coordinates to multiple Cu atoms. An interesting motif found is the linking of two
COs resulting in an O–C–C–O chain. However, for both cluster sizes, this last
group is lowly populated, relatively high in energy, and presents no match for the
35 experimental spectrum.

Structures with molecularly bound CO_2 are typically much higher in energy
($>1.4\text{ eV}$) for both $n = 6$ and 7. The structures found are always di- σ -bound *via* the
C and the O. Formation of a C–C bond is favorable resulting in the preferential
40 binding of the CO_2 carbon atom to the cluster's carbon atom, with one of the O
atoms binding to a Cu atom. The lowest energy structures displaying this binding
motif are 6E and 7D.

Structures are assigned based on the comparison between calculated and
experimental spectra. The IRMPD spectrum of $[\text{Cu}_6\text{C}\cdot\text{CO}_2]^-$ shows two major
45 bands at 718 and 1630 cm^{-1} with weaker bands at 1094 , 1426 , 1802 , and
 2016 cm^{-1} . This number of bands cannot be explained by a single structure. The
major band at 718 cm^{-1} agrees best with the CO_2 bending mode predicted at
 705 cm^{-1} for structure 6F, where CO_2 is intact, but bent as a result of charge
transfer. The CO_2 molecule is bound with a C and the O to two neighboring Cu
50 atoms in a bidentate bridging configuration. Two more intense bands are pre-
dicted at 1141 and 1620 cm^{-1} offering a good match for the experimental bands at

1094 and 1630 cm^{-1} . These correspond to the C–O stretching vibrations involving the bound and free O atoms, respectively. Although the band frequencies of 6F match the experiment very well, the relative intensities are less convincing. The experimental band at 718 cm^{-1} has the highest intensity, even though it does not dominate any of the calculated spectra. We do not have a good explanation for this observation; we can speculate that it is related to the excitation mechanism in IRMPD spectroscopy, which may cause discrepancies with calculated intensities.

The search for low energy structures for Cu_6C^- yielded a Cu_5 square pyramid structure shown in Fig. 5, with the C atom fourfold coordinated to the base, and an additional Cu atom μ^2 -bound on one of the edges. In structure 6F, this structure is retained, making this a likely entrance complex. Despite the higher energy of structure 6F (+1.86 eV relative to the lowest energy structure) it is the easiest formed. The formation of other more stable isomers necessarily proceeds *via* either C–O bond cleavage or structural rearrangement of the cluster. Both processes require additional energy to overcome a barrier associated with the transition state.

The depletion spectrum of $[\text{Cu}_6\text{C}\cdot\text{CO}_2]^-$ (Fig. S1†) does not rule out a mixture of different isomers present in the molecular beam, since none of the bands reach 100% depletion. The enhanced intensity of the 1630 cm^{-1} experimental band could then potentially be explained by the presence of an isomer like 6E with predicted bands at 1163 and 1629 cm^{-1} . 6E appears also relatively easily formed as an entrance complex, where CO_2 also binds in a bidentate bridging configuration, now with the C to the cluster's carbon atom. However, the bare cluster's bridging Cu is now bound on a hollow site.

The dominant experimental bands can thus be explained by molecularly adsorbed CO_2 , but minor bands above 1750 cm^{-1} more likely originate from the carbonyl C–O stretch, resulting from CO_2 dissociation. The band at 1802 cm^{-1} might be due to structure 6C's 1825 cm^{-1} predicted mode but could also be assigned to the doublet from structure 6D at 1764 and 1825 cm^{-1} , which could have merged into one band due to band broadening. The 2016 cm^{-1} band could be the second band of structure 6C at 1990 cm^{-1} or 6A and 6B's bands at 2069 and 2018 cm^{-1} , respectively. The offset for 6A makes 6B, 6C and 6D the more likely candidates to explain the high-frequency bands.

All in all, it can be concluded that CO_2 binds mostly molecularly to Cu_6C^- , but in an activated form *via* the C atom either to C or to Cu-atoms. Dissociation may occur, but it is certainly not the dominant motif, which is underlined by the significantly higher predicted intensities of the carbonyl C–O stretch modes.

This dominance of molecular binding is in sharp contrast to what happens after adsorption of CO_2 on Cu_7C^- . The IRMPD spectrum of $[\text{Cu}_7\text{C}\cdot\text{CO}_2]^-$ has one dominant band at 2033 cm^{-1} and a low-intensity band at 598 cm^{-1} . From a comparison with low-energy isomers, it is quite clear that CO_2 is dissociated since no bands associated with activated complexes (7D and 7F) are present in the experimental spectrum. Structure 7C has two CO binding motifs, and its spectrum has separate bands at 1915 (μ^2 , Cu) and 2017 cm^{-1} (μ^1 , Cu). Because this does match the experimental spectrum, we must look for structures with only μ^1 binding. Spectra calculated for such structures (7A, 7B, and 7E) are dominated by one band, depending on the adsorption site of CO, at 2078 (μ^1 to C), 2017 (twice μ^1 to Cu) and 2038 cm^{-1} (μ^1 to Cu), respectively. Each of them could explain the main experimental band at 2033 cm^{-1} . The low-intensity band at 598 cm^{-1} could

1 be due to the weak bands around 558 and 600 cm^{-1} for structures 7A and 7E, respectively. These bands are more than twenty times lower in intensity than the C–O stretch. We therefore assign the spectrum to either 7A or 7E, corresponding to structures where the CO formed from dissociating CO_2 is μ^1 -bound either to the cluster's C or Cu atom, and O bound separately to the cluster. Both structures appear not easily formed, because the lowest energy structure for Cu_7C^- (Fig. 5) requires substantial re-arrangement.

10 CO_2 activation by Cu_nC_2^-

15 If CO_2 is reacted with Cu clusters containing a second carbon, the picture changes. The spectra for the $[\text{Cu}_n\text{C}_2\cdot\text{CO}_2]^-$ ($n = 3\text{--}8$) species are presented in Fig. 3 (right panels). Due to a different production efficiency for clusters with two C atoms, a slightly different range of n is presented. In contrast to the Cu_nC^- species, where only $[\text{Cu}_6\text{C}\cdot\text{CO}_2]^-$ and $[\text{Cu}_{10}\text{C}\cdot\text{CO}_2]^-$ show molecular adsorption, all spectra except that for $[\text{Cu}_5\text{C}_2\cdot\text{CO}_2]^-$ show bands around 740, 1150, and 1650 cm^{-1} indicating activated, but molecular adsorption of CO_2 . For all these species, bands above 1800 cm^{-1} , attributed to dissociative CO_2 adsorption, have disappeared, suggesting that only molecularly bound CO_2 complexes are left. Only the spectrum of $[\text{Cu}_5\text{C}_2\cdot\text{CO}_2]^-$ shows an intense band at 2034 cm^{-1} , suggesting dissociative adsorption. From this, it can be concluded that, overall, the addition of the second C atom reduces the cluster reactivity.

25 Again, we selected two cluster sizes for DFT calculations, $[\text{Cu}_5\text{C}_2\cdot\text{CO}_2]^-$ and $[\text{Cu}_6\text{C}_2\cdot\text{CO}_2]^-$. From the glancing overview in Fig. 3 they are representative for dissociative and molecular binding of CO_2 . The comparison of the spectra for these structures with spectra of the clusters reacted with CO confirms this conclusion, because the 2034 cm^{-1} band for $[\text{Cu}_5\text{C}_2\cdot\text{CO}_2]^-$ perfectly matches that observed for $[\text{Cu}_5\text{C}_2\cdot\text{CO}]^-$. In contrast, the spectrum for $[\text{Cu}_6\text{C}_2\cdot\text{CO}]^-$ does not show any counterpart for the bands dominating the spectrum of $[\text{Cu}_6\text{C}_2\cdot\text{CO}_2]^-$.

30 The calculated structures were again categorized following their spectral and adsorption motifs, as illustrated in Fig. 6. The full list of the lowest energy structures of the identified groups can be found in Fig. S3.† Interestingly, for higher carbon loading, the most common motif found is still the dissociation of CO_2 to CO and O (5C and 6.2C), both bound to Cu atoms. The lowest energy structures 5A and 6.2A are formed by the adsorption of CO to one of the cluster's C atoms and O to the other, forming a C–C–O and a CO moiety. These structures are comparable to the CO motif of Cu_6C^- and Cu_7C^- , suggesting it is overall more favorable for CO_2 to dissociate and bind to the C atoms of the cluster, rather than to Cu.

35 The experimental spectrum of $[\text{Cu}_5\text{C}_2\cdot\text{CO}_2]^-$ is dominated by the strong band at 2035 cm^{-1} and has two more bands at 1667 and 1810 cm^{-1} . The maximum depletion observed ($\sim 45\%$) allows room for assignment to multiple isomers. All structures shown could potentially be present in the molecular beam since they all have bands that might overlap with the experimentally detected. The experimental band at 2035 cm^{-1} could be explained either by structure 5A with two close by bands predicted at 2077 and 2027 cm^{-1} , or by structures 5C, 5D, and 5E with bands at 2063, 2078, and 2012 cm^{-1} , respectively. The second band, at 1810 cm^{-1} , could be explained by the main band of structure 5F at 1865 cm^{-1} , or by the minor bands predicted for structures 5C and 5E. The only serious

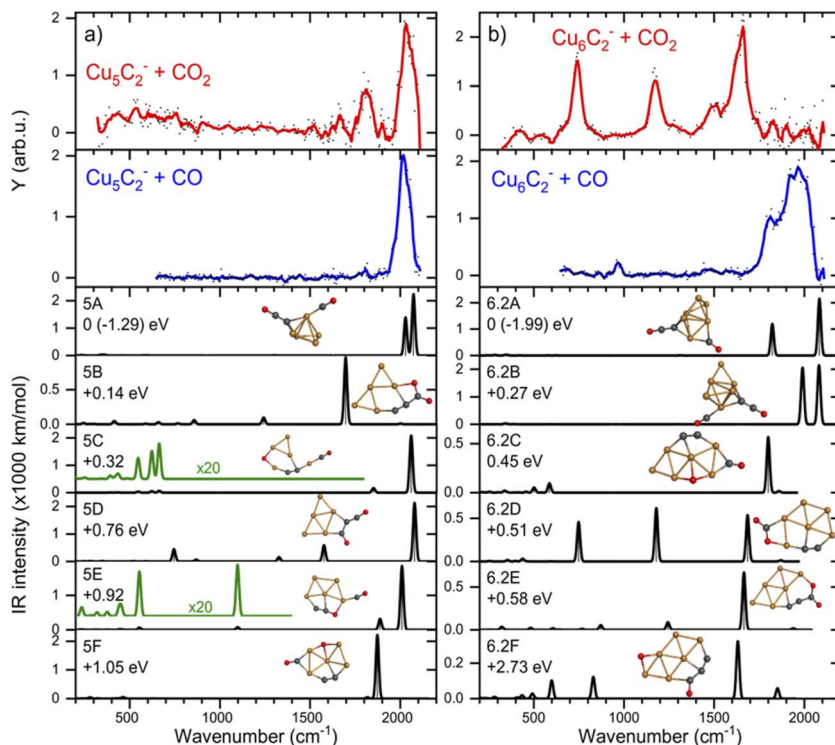


Fig. 6 IRMPD spectra of (a) Cu_5C_2^- and (b) Cu_6C_2^- reacted with CO_2 (red) and CO (blue), and calculated spectra (black) of the lowest energy structure. For details, see caption Fig. 4.

contender for the weakest band observed at 1667 cm^{-1} is structure 5B with the band at 1698 cm^{-1} . All except for 5B, have CO_2 adsorbed dissociatively on the cluster. 5B has molecularly adsorbed CO_2 bound with the one of the C atoms attached to one of the cluster's C atoms, and the O to a Cu.

If we compare the structures shown in Fig. 4a to the lowest energy structure for Cu_5C_2^- , predicted to have a 2D, wheel-like structure, it appears that all structures apart from 5A could be formed without all too large structural re-arrangements of the original cluster: all retain a planar structure with the two C atoms of the bare clusters close together. Only the formation of 5A upon CO_2 adsorption requires a major structural re-arrangement.

In contrast to the spectrum of $[\text{Cu}_5\text{C}_2\cdot\text{CO}_2]^-$, the spectrum of $[\text{Cu}_6\text{C}_2\cdot\text{CO}_2]^-$ does not exhibit any bands above 1780 cm^{-1} , which is indicative that CO_2 is adsorbed molecularly. Therefore, structures 6.2A, 6.2B and 6.2C can be ruled out since they all have high-intensity bands at 1800 cm^{-1} or above. Three of the four experimental bands (742 , 1173 , and 1648 cm^{-1}) could quite well be explained by isomer 6.2D with bands at 748 , 1179 , and 1685 cm^{-1} . The band at 1648 cm^{-1} could also be explained by the 1648 cm^{-1} band of structure 6.2E or by structure 6.2F's 1634 cm^{-1} band, but these structures lack intense bands at lower frequencies. Only the experimental band at 1484 cm^{-1} , a shoulder of the 1648 cm^{-1} band, cannot be explained by isomer 6.2D. Interestingly, it appears quite similar to the weaker band at 1426 cm^{-1} in the $[\text{Cu}_6\text{C}\cdot\text{CO}_2]^-$ spectrum,

1 which may have a similar origin. Another parallel drawn from the spectrum of
[Cu₆C·CO₂]⁻ is that the relative intensities of the middle band are not reflecting
the calculated ratios.

5 Reactive potential energy surface

10 It is now of interest to understand what factors could determine dissociation or
lack thereof. For this, we attempted to calculate reaction pathways for two
representative clusters. The complexity associated with reconstructing the reac-
tive pathway of CO₂ adsorption and subsequent activation over carbon-doped Cu
clusters is enormous. First, as experimental evidence for the structures of the bare
clusters is unknown, the starting point is ill-defined. Nevertheless, using the
minima found in Fig. 5, we calculated a reaction pathway for CO₂ dissociation. It
15 is clear that the structural phase-space for CO₂ initial adsorption is large, and the
pathways to dissociation are plenty. We therefore limit ourselves to potential
pathways that could illuminate whether there could exist a difference in barrier
for even or odd numbers of Cu atoms.

20 In the top panel of Fig. 7, the adsorption and subsequent dissociation of CO₂
over Cu₆C⁻ is shown. Adsorption leads to the formation of structure 6F, already
thought to be an entrance complex, with an adsorption energy of 0.73 eV. The CO₂
is adsorbed *via* the C to one of the Cu atoms forming the base of the octahedron,
and the O atom to the capping extra Cu atom. From here, CO is abstracted
25 towards the base Cu atom, after which it is bound to the next Cu–Cu bridge,
overall gaining little energy with respect to the entrance complex. The transition
state associated with abstracting the CO is relatively high at 1.18 eV above the
reactants. Such a barrier is insurmountable, certainly under the room-
temperature near-thermal conditions of the reaction channel used here.

30 The bottom panel of Fig. 7 shows the same reaction path, now calculated for
CO₂ adsorbing onto Cu₇C⁻. The entrance complex found is much higher in
energy than anything shown in Fig. 4b, at about 2.5 eV higher than structure 7A,
the lowest energy structures. The cluster is an octahedral Cu₅C, with the sixth Cu
(denoted Cu(6)) bridge-bound to a Cu–Cu edge, and the seventh to the newly
35 formed Cu–Cu(6) edge. CO₂ is adsorbed *via* its C atom to an octahedron Cu atom,
and *via* an O atom to the other Cu–Cu(6) edge. CO abstraction then leads to an
energetically still not very favorable structure with the CO bound on top of a Cu
atom, and the O atom on a hollow Cu–Cu–Cu site. The initial adsorption energy of
CO₂ onto Cu₇C⁻ is with 0.93 eV not much different from that of Cu₆C⁻. In
40 contrast, the dissociation reaction over Cu₇C⁻ is much more facile than over
Cu₆C⁻, and with an energy barrier 0.55 eV lower than the energy of the reactants,
this dissociation reaction is well possible.

45 These two reaction paths are by no means a complete description of the
reactions taking place. However, they do allow to draw initial conclusions. (1) The
observation of dominant molecular adsorption in the experimental spectrum of
[Cu₆C·CO₂]⁻ is consistent with the high barrier calculated from structure 6F in
Fig. 7; (2) finding a dissociation barrier below the energy of the reactants for
Cu₇C⁻ demonstrates that dissociation should occur, also consistent with the
50 observed spectrum. It may not be this pathway, as lower barrier pathways may
exist, but if an exothermic reaction with a barrier below the reactants exists, the
system should find it.

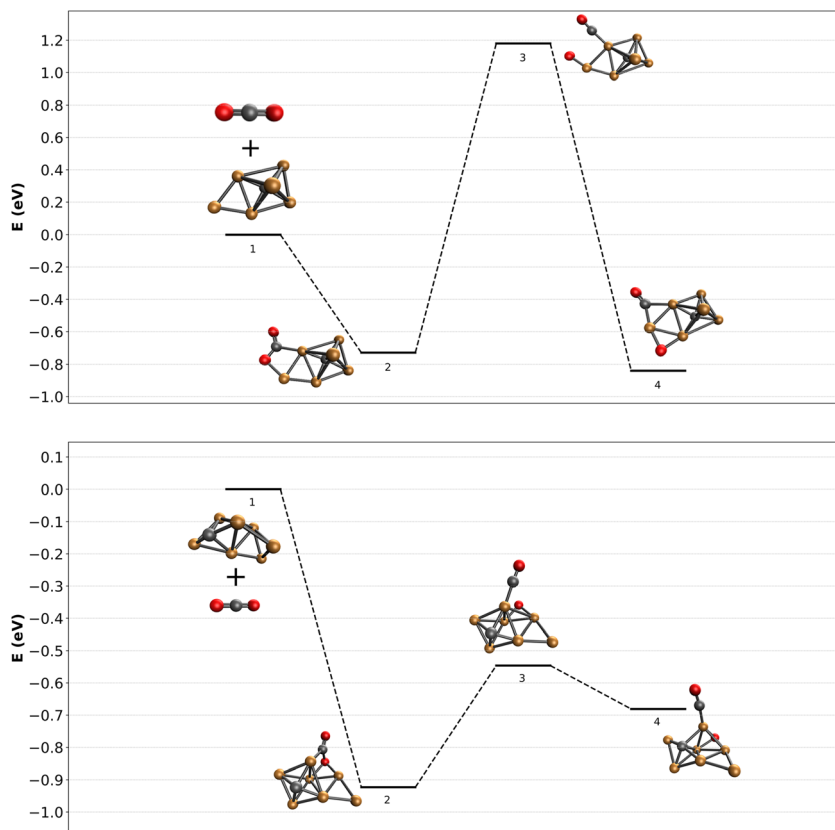


Fig. 7 Reactive potential energy surface for CO₂ dissociation over the lowest energy structures found for Cu₆C⁻ and Cu₇C⁻, calculated at the TPSSH/def2-TZVPD level of theory. Energies (in eV) are given with respect to the bare clusters and free CO₂.

So what is now the influence of the carbon atom on the dissociation propensity? We recall that for Cu_{*n*}C⁻ the dominant adsorption form is dissociative and for Cu_{*n*}C₂⁻ molecular. If extra carbon atoms have a decisive influence, one would compare the outcome of the CO₂ adsorption reaction for clusters with the same number of atoms, where Cu atoms are exchanged for C atoms. For this comparison, we evaluate the spectra in Fig. 3, comparing Cu₆C⁻ with Cu₅C₂⁻, Cu₇C⁻ with Cu₆C₂⁻, and so on. If anything, one sees that this comparison gives the opposite outcome: Cu₆C⁻ molecular, Cu₅C₂⁻ dissociative; Cu₇C⁻ dissociative, Cu₆C₂⁻ molecular; Cu₈C⁻ dissociative, Cu₇C₂⁻ inconclusive; Cu₉C⁻ dissociative, Cu₈C₂⁻ molecular. Then, if we compare clusters with the same number of Cu atoms: Cu₆C⁻ and Cu₆C₂⁻ molecular, Cu₇C⁻ dissociative, Cu₇C₂⁻ inconclusive; Cu₈C⁻ dissociative, Cu₈C₂⁻ molecular. The only trend, if one may call it this: the addition of the second carbon to the cluster inhibits the dissociative adsorption for all cluster sizes except for *n* = 5. We can only speculate that the addition of an extra C atom, which has the higher electron affinity of C (2.55) compared to Cu (1.90),⁴³ leads to a decrease of the charge located on the Cu atoms thereby reducing the electron donation from the cluster into the CO₂ antibonding orbital.

1 Of course, such a hypothesis requires a more detailed investigation, including
spectroscopic characterization of CO₂ activation by the pure Cu_n⁻ clusters that
was elusive in this work.

5 Conclusion

10 IRMPD spectroscopy of the CO₂ adsorbed on the anionic copper carbides reveals
a size-dependent bonding nature. Single-carbon doped Cu clusters Cu_nC⁻ with
 $n = 6$ and 10 show predominantly activated adsorption, but dissociative
adsorption of CO₂ for $n = 7-9$. These results were verified with control experi-
ments of CO adsorbed on the same cluster sizes and with DFT calculations. The
15 exact position of the C and O atoms on the clusters could not be determined
precisely, since the bands for specific structures are very similar in frequency.
Therefore, only the main binding motifs have been analyzed. Doubly-carbon
doped Cu clusters Cu_nC₂⁻ with $n = 3-8$ show predominantly molecular adsorp-
tion, excepting Cu₅C₂⁻ which shows dissociative adsorption of CO₂. DFT calcu-
lations of the dissociation reaction of CO₂ over Cu₆C⁻ and Cu₇C⁻ are consistent
20 with the observed IR spectra, showing only activation for the former and disso-
ciation for the latter. To understand why the addition of a second C atom
apparently throttles CO₂ dissociation requires further extensive computational
work, evaluating reactive pathways over other cluster compositions. We speculate
that the higher electron affinity of C relative to that of Cu will reduce the capacity
25 of Cu atoms in higher C/Cu ratio clusters to donate electron density to CO₂,
reducing the activation capabilities.

Conflicts of interest

30 There are no conflicts to declare.

Acknowledgements

35 The authors acknowledge financial support from the Netherlands Organization
for Scientific Research (NWO) under grant no. 739.017.008 (Mat4Sus), and the
European Union's Horizon 2020 research and innovation programme under the
Marie Skłodowska-Curie grant agreement No. 955650. We further thank NWO for
the support of the FELIX Laboratory and for CPU time at the Dutch National
40 Supercomputers Cartesius and Snellius (2021.055). TH is grateful for the János
Bolyai Research Scholarship (BO/00642/21/7) of the Hungarian Academy of
5 Sciences. We thank Prof. László Nyulászi for fruitful discussions.

Notes and references

- 45 1 S. Xie, Q. Zhang, G. Liu and Y. Wang, *Chem. Commun.*, 2016, **52**, 35–59.
2 M. Behrens, F. Studt, I. Kasatkin, S. Kuhl, M. Havecker, F. Abild-Pedersen,
S. Zander, F. Girgsdies, P. Kurr, B.-L. Kniep, M. Tovar, R. W. Fischer,
J. K. Norskov and R. Schlogl, *Science*, 2012, **336**, 893–897.
3 M. V. Twigg and M. S. Spencer, *Top. Catal.*, 2003, **22**, 191–203.
50 4 H. H. Hwu and J. G. Chen, *Chem. Rev.*, 2005, **105**, 185–212.

- 1 5 S. Posada-Pérez, F. Viñes, J. A. Rodríguez and F. Illas, *Top. Catal.*, 2015, **58**, 159–173.
- 6 Q. Zhang, L. Pastor-Pérez, S. Gu and T. R. Reina, *Catalysts*, 2020, **10**, 1–23.
- 7 A. L. Stottlemeyer, T. G. Kelly, Q. Meng and J. G. Chen, *Surf. Sci. Rep.*, 2012, **67**, 201–232.
- 5 8 M. D. Porosoff, S. Kattel, W. Li, P. Liu and J. G. Chen, *Chem. Commun.*, 2015, **51**, 6988–6991.
- 6 9 X. Liu, C. Kunkel, P. Ramírez De La Piscina, N. Homs, F. Viñ and F. Illas, 2017.
- 10 10 J. A. Rodríguez, J. Evans, L. Feria, A. B. Vidal, P. Liu, K. Nakamura and F. Illas, *J. Catal.*, 2013, **307**, 162–169.
- 11 P. Liu and J. A. Rodríguez, *J. Chem. Phys.*, 2004, **120**, 5414–5423.
- 12 L. K. Ono, D. Sudfeld and B. Roldan Cuenya, *Surf. Sci.*, 2006, **600**, 5041–5050.
- 13 J. A. Rodríguez and F. Illas, *Phys. Chem. Chem. Phys.*, 2012, **14**, 427–438.
- 15 14 S. Posada-Pérez, P. J. Ramírez, J. Evans, F. Viñes, P. Liu, F. Illas and J. A. Rodríguez, *J. Am. Chem. Soc.*, 2016, **138**, 8269–8278.
- 15 15 A. B. Vidal, L. Feria, J. Evans, Y. Takahashi, P. Liu, K. Nakamura, F. Illas and J. A. Rodríguez, *J. Phys. Chem. Lett.*, 2012, **3**, 2275–2280.
- 20 16 J. A. Rodríguez, D. Stacchiola, S. Senanayake, P. Liu and J. Evans, *ACS Catal.*, 2015, **5**, 6696–6706.
- 7 17 X. Zhang, E. Lim, S. K. Kim and K. H. Bowen, *J. Chem. Phys.*, 2015, **143**.
- 18 D. W. Arnold, S. E. Bradforth, E. H. Kim and D. M. Neumark, *J. Chem. Phys.*, 1995, **102**, 3510–3518.
- 19 B. J. Knurr and J. M. Weber, *J. Phys. Chem. A*, 2014, **118**, 10246–10251.
- 25 20 B. J. Knurr and J. M. Weber, *J. Phys. Chem. A*, 2014, **118**, 8753–8757.
- 21 B. J. Knurr and J. M. Weber, *J. Am. Chem. Soc.*, 2012, **134**, 18804–18808.
- 22 A. D. Boese, H. Schneider, A. N. Gloss and J. M. Weber, *J. Chem. Phys.*, 2005, **122**.
- 8 23 B. J. Knurr and J. M. Weber, *J. Phys. Chem. A*, 2013, **117**, 10764–10771.
- 30 24 M. C. Thompson, L. G. Dodson and J. M. Weber, *J. Phys. Chem. A*, 2017, **121**, 4132–4138.
- 25 M. C. Thompson, J. Ramsay and J. M. Weber, *J. Phys. Chem. A*, 2017, **121**, 7534–7542.
- 35 26 M. C. Thompson and J. M. Weber, *J. Phys. Chem. A*, 2018, **122**, 3772–3779.
- 27 B. J. Knurr and J. M. Weber, *J. Phys. Chem. A*, 2014, **118**, 4056–4062.
- 28 J. M. Weber, *Int. Rev. Phys. Chem.*, 2014, **33**, 489–519.
- 29 P. A. Hintz and K. M. Ervin, *J. Chem. Phys.*, 1995, **103**, 7897–7906.
- 30 J. Ho, K. M. Ervin and W. C. Lineberger, *J. Chem. Phys.*, 1990, **93**, 6987–7002.
- 40 31 A. E. Green, J. Justen, W. Schöllkopf, A. S. Gentleman, A. Fielicke and S. R. Mackenzie, *Angew. Chem., Int. Ed.*, 2018, **57**, 14822–14826.
- 32 A. Yanagimachi, K. Koyasu, D. Y. Valdivielso, S. Gewinner, W. Schöllkopf, A. Fielicke and T. Tsukuda, *J. Phys. Chem. C*, 2016, **120**, 14209–14215.
- 33 T. G. Dietz, M. A. Duncan, D. E. Powers and R. E. Smalley, *J. Chem. Phys.*, 1981, **74**, 6511–6512.
- 45 34 J. M. Bakker, V. J. F. Lapoutre, B. Redlich, J. Oomens, B. G. Sartakov, A. Fielicke, G. von Helden, G. Meijer and A. F. G. van der Meer, *J. Chem. Phys.*, 2010, **132**, 074305.
- 50 35 Y. Shao, Z. Gan, E. Epifanovsky, A. T. B. Gilbert, M. Wormit, J. Kussmann, A. W. Lange, A. Behn, J. Deng, X. Feng, D. Ghosh, M. Goldey, P. R. Horn, L. D. Jacobson, I. Kaliman, R. Z. Khaliullin, T. Kuś, A. Landau, J. Liu,

- 1 E. I. Proynov, Y. M. Rhee, R. M. Richard, M. A. Rohrdanz, R. P. Steele,
E. J. Sundstrom, H. L. Woodcock, P. M. Zimmerman, D. Zuev, B. Albrecht,
E. Alguire, B. Austin, G. J. O. Beran, Y. A. Bernard, E. Berquist,
5 K. Brandhorst, K. B. Bravaya, S. T. Brown, D. Casanova, C.-M. Chang,
Y. Chen, S. H. Chien, K. D. Closser, D. L. Crittenden, M. Diedenhofen,
R. A. DiStasio, H. Do, A. D. Dutoi, R. G. Edgar, S. Fatehi, L. Fusti-Molnar,
A. Ghysels, A. Golubeva-Zadorozhnaya, J. Gomes, M. W. D. Hanson-Heine,
P. H. P. Harbach, A. W. Hauser, E. G. Hohenstein, Z. C. Holden, T.-C. Jagau,
10 H. Ji, B. Kaduk, K. Khistyayev, J. Kim, J. Kim, R. A. King, P. Klunzinger,
D. Kosenkov, T. Kowalczyk, C. M. Krauter, K. U. Lao, A. D. Laurent,
K. V. Lawler, S. V. Levchenko, C. Y. Lin, F. Liu, E. Livshits, R. C. Lochan,
A. Luenser, P. Manohar, S. F. Manzer, S.-P. Mao, N. Mardirossian,
A. V. Marenich, S. A. Maurer, N. J. Mayhall, E. Neuscamman, C. M. Oana,
15 R. Olivares-Amaya, D. P. O'Neill, J. A. Parkhill, T. M. Perrine, R. Peverati,
A. Prociuk, D. R. Rehn, E. Rosta, N. J. Russ, S. M. Sharada, S. Sharma,
D. W. Small, A. Sodt, T. Stein, D. Stück, Y.-C. Su, A. J. W. Thom,
T. Tsuchimochi, V. Vanovschi, L. Vogt, O. Vydrov, T. Wang, M. A. Watson,
J. Wenzel, A. White, C. F. Williams, J. Yang, S. Yeganeh, S. R. Yost,
20 Z.-Q. You, I. Y. Zhang, X. Zhang, Y. Zhao, B. R. Brooks, G. K. L. Chan,
D. M. Chipman, C. J. Cramer, W. A. Goddard, M. S. Gordon, W. J. Hehre,
A. Klamt, H. F. Schaefer, M. W. Schmidt, C. D. Sherrill, D. G. Truhlar,
A. Warshel, X. Xu, A. Aspuru-Guzik, R. Baer, A. T. Bell, N. A. Besley,
J.-D. Chai, A. Dreuw, B. D. Dunietz, T. R. Furlani, S. R. Gwaltney, C.-P. Hsu,
25 Y. Jung, J. Kong, D. S. Lambrecht, W. Liang, C. Ochsenfeld, V. A. Rassolov,
L. V. Slipchenko, J. E. Subotnik, T. Van Voorhis, J. M. Herbert, A. I. Krylov,
P. M. W. Gill and M. Head-Gordon, *Mol. Phys.*, 2015, **113**, 184–215.
- 36 F. Liu, E. Proynov, J.-G. Yu, T. R. Furlani and J. Kong, *J. Chem. Phys.*, 2012, **137**,
114104.
- 37 O. V. Lushchikova, M. Szalay, H. Tahmasbi, L. B. F. Juurlink, J. Meyer, T. Höltzl
and J. M. Bakker, *Phys. Chem. Chem. Phys.*, 2021, **23**, 26661–26673.
- 38 J. B. A. Davis, F. Baletto and R. L. Johnston, *J. Phys. Chem. A*, 2015, **119**, 9703–
9709.
- 39 N. Mina-Camilde, C. I. Manzanares and J. F. Caballero, *J. Chem. Educ.*, 1996,
35 **73**, 804.
- 40 K. O. Hartman and I. C. Hisatsune, *J. Chem. Phys.*, 1966, **44**, 1913–1918.
- 41 S. Li, M. M. G. Alemany and J. R. Chelikowsky, *J. Chem. Phys.*, 2006, **125**.
- 42 K. Jug, B. Zimmermann, P. Calaminici and A. M. Köster, *J. Chem. Phys.*, 2002,
40 **116**, 4497.
- 43 A. Louis Allred, *J. Inorg. Nucl. Chem.*, 1961, **17**, 215–221.