

A new *Athlophorus* Burmeister, 1847 species from Vietnam (Hymenoptera: Tenthredinidae)

ATTILA HARIS

H-1076 Budapest, Garay u. 19. 2/20.
email: attilaharis@yahoo.com

HARIS, A.: *A new Athlophorus Burmeister, 1847 species from Vietnam (Hymenoptera: Tenthredinidae).*

Abstract: *Athlophorus bangensis* spec. nov. described from Vietnam and compared to *Athlophorus pilifrons* (Cameron, 1899) and *Athlophorus meghalayensis* Saini and Singh, 1987.

Keywords: Hymenoptera, Tenthredinidae, *Athlophorus*, new species, Vietnam

Introduction

This is the next part of a series to study the sawfly fauna of Vietnam after HARIS 2006, 2007, 2008, 2010 and 2012. The fauna of the country hardly studied and the known species are approximately only 25% of the real species richness. Previously FORSIUS 1931, MALAISE 1934, 1944, 1945, 1947, 1957, MOCSÁRY 1909, KONOW 1902, TURNER 1919, 1920 and WEI 1997 recorded and described some sawflies from the country.

Material and methods

The studied material amounts approximately 2000 specimens was collected by Dr. C. Holzschuh, E. Jendek, I. H. Marshal, Zd. Jindra, M. Tryzna, O. Sousa, J. Halada, S. Becvar, S. Sazanov, V. Kubán with the help of local volunteers.

For the identification of the species, we consulted the monography of MALAISE 1945 and SAINI 2006 completed with numerous papers as follows: SAINI and VASU 1997, SAINI and AHMAD 2012, WEI and NIE 2002, NIE and WEI 2004, HARIS 2002, 2006, 2007 and HARIS and ROLLER 2007.

Holotype is deposited in the Landesmuseum Linz.

Description of the new species

Athlophorus bangensis spec. nov.
(Figs. 1 and 2)

Holotype: male: Vietnam, Cao Bang pr., Phia-Oac Mts., circa 100 m, 105° 52'E 22° 34' N, 12. 04. 2011, E. Jendek.

Body black; reddish yellow: basal margin of clypeus, scape, pedicell, third antennal segment in dorsal view, base of 4th antennal segment, inner orbits, hind margin of pronotum, tegula, hind margin of last sternite; brown: labrum, mandibles (except black apex); white: anterior tibia, basal fifth of middle and hind tibia, small basal spots on propodeum, 2nd tergite except of large dorsal black triangle, third tergite except of central black spot. Wings hyaline. Anterior wing with apical brown spot covering all radial cells, upper third of 2nd and 1st cubital cells but not extending base of stigma. Antenna about as long as head and thorax combined. Ratio of antennal segments: 11 : 9 : 28 : 24 : 16 : 11 : 10 : 8 : 9. OOL : POL : OCL: 6 : 2 : 9. Temples and vertex smooth and shiny. Frontal area and inner orbits densely, deeply punctured, matt. Postoccipital carina nearly reach up to the upper corner of eye. Clypeus deeply and roundly emarginate, clypeal emargination about 0.6x as deep as median clypeal length. Gena nearly linear, about 0.3x as wide as diameter of anterior ocellus. Head gently narrowing behind eyes. Frontal area not marked but slightly elevated. Anterior lobe of mesonotum, inner part of lateral lobes of mesonotum, mesoscutellum, mesoscutellar appendage and metascutellum very densely, deeply but not roughly punctured, matt, without shiny interspaces. Distal part of lateral lobes of mesoscutellum moderately sporadic, moderately deeply punctured, moderately shiny. Mesopleuron and mesepisternum very deeply and very roughly punctured matt. Mesoscutellum flat without pyramidal elevation or carina. Abdominal tergites 1 and 2 smooth and shiny. Other tergites with fine surface sculpture, shiny. Claws without basal lobe, inner tooth shorter than apical. Length: 8.0 mm.

In MALAISE 1944 and SAINI 2006, the new species is related to *Athlophorus pilifrons* (Cameron, 1899) and *Athlophorus meghalayensis* Saini and Singh, 1987. Differences mainly restricted in colour and also genitalia. Compare figs. 86a and 87 in SAINI 2006 with Fig. 2.

Acknowledgement

I express my grateful thanks to Dr. Fritz Gusenleitner curator, (Landesmuseum Linz) for his loan to study this material.



Fig. 1: *Athlophorus bangensis* spec. nov. holotype

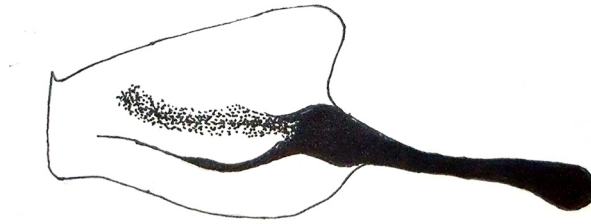


Fig. 2: Penis valve of *Athlophorus bangensis* spec. nov.

References

- FORSIUS, R. 1931: Über einige neue oder wenig bekannte orientalische Tenthredinoiden (Hymenopt.). - *Annalen des Naturhistorischen Museums in Wien*, Wien 46 (1932/1933): 29-48.
- HARIS, A. 2002: Sawflies from the Indomalay Islands. - *Folia entomologica hungarica* 63: 87-103.
- HARIS, A. 2006: New sawflies (Hymenoptera: Symphyta, Tenthredinidae) from Indonesia, Papua New Guinea, Malaysia and Vietnam, with keys to genera and species. - *Zoologische Mededelingen*, Leiden 80(2): 291-365.
- HARIS, A. 2007: Sawflies (Hymenoptera: Symphyta, Tenthredinidae) from Indonesia, Malaysia and Vietnam. - *Zoologische Mededelingen*, Leiden 81(8): 149-159.
- HARIS, A. 2008: Sawflies (Hymenoptera: Symphyta, Tenthredinidae) from Vietnam and China. - *Zoologische Mededelingen*, Leiden 82(29): 281-296.
- HARIS, A. 2010: Sawflies (Hymenoptera: Tenthredinidae) from South Vietnam. - *Natura Somogyiensis* 17: 193-206.
- HARIS, A. 2012: Sawflies from Vietnam (Hymenoptera: Symphyta). - *Natura Somogyiensis* 22: 123-140.
- KONOW, F. W. 1902: Neue Blattwespen. (Hym). - *Zeitschrift für systematische Hymenopterologie und Dipterologie*, Teschendorf bei Stargard i. Mecklenburg 2(6): 384-390.
- MALAISE, R. 1934: On some sawflies (Hymenoptera: Tenthredinidae) from the Indian Museum, Calcutta. - *Records of the Indian Museum*, Calcutta 36: 453-474.
- MALAISE, R. 1944: Entomological Results from the Swedish Expedition 1934 to Burma and British India (Hymenoptera: Tenthredinoidea). Collected by René Malaise. The Tenthredinoidea of South-Eastern Asia. Subfamily II. Selandriinae. - *Arkiv för Zoologi*, Stockholm u. a. 35[1944-1945](3[A10]): 1-58.
- MALAISE, R. 1945: Tenthredinoidea of South-Eastern Asia with a general zoogeographical review. - *Opuscula Entomologica*, Lund Suppl. 4: 1-288; 57 Abb., 20 Tafeln.
- MALAISE, R. 1947: Entomological Results from the Swedish expedition 1934 to Burma and British India. Hymenoptera: Tenthredinoidea. Collected by René Malaise. The Tenthredinoidea of South Eastern Asia. Part III. The Emphytus-Athlophorus Group. - *Arkiv för Zoologi*, Stockholm u. a. 39[1947-1948](3[A8]): 1-39.
- MALAISE, R. 1957: Some Neotropical and Oriental Tenthredinoidea (Hym.). - *Entomologisk Tidskrift*, Stockholm 78(1): 6-22.
- MALAISE, R. 1961: New Oriental Sawflies (Hymen. Tenthred.). - *Entomologisk Tidskrift*, Stockholm 82(3-4): 231-260.
- MOCŠÁRY, A. 1909: *Chalastogastra nova* in collectione Musei nationalis Hungarici. - *Annales historico-naturales Musei Nationalis Hungarici*, Budapest 7: 1-39.
- NIE, H. & WEI, M. 2004: A Taxonomic study on the genus *Athlophorus* Burmeister from China (Hymenoptera, Tenthredinidae). - *Acta Zootaxonomica Sinica*, Beijing 29(2): 330-338.
- TURNER, R. E. 1919: On Indo-Chinese Hymenoptera collected by R. Vitalic de Salvaza. - I. - *Annals and Magazine of Natural History*, London ser. 9(3): 425-433.
- TURNER, R. E. 1920: On Indo-Chinese Hymenoptera collected by R. Vitalic de Salvaza. - IV. - *Annals and Magazine of Natural History*, London ser. 9, 5: 84-98.
- SAINI, M. S. & VASU, V. 1997: Revision of the genus *Athlophorus* Burmeister from India (Hymenoptera: Symphyta: Tenthredinidae). - *Israel Journal of Entomology*, Tel-Aviv 31: 153-178.
- SAINI, M. S. 2006: Subfamily Allantinae. In: *Indian Sawflies Biodiversity. Keys, Catalogue & Illustrations*. - Bishen Singh Mahendra Pal Singh, Dehra Dun 3: 1-205.
- SAINI, M. S. & AHMAD, M. 2012: Four new species of the genus *Athlophorus* Burmeister, 1847 from the Indian Himalayas (Hymenoptera: Symphyta: Tenthredinidae: Allantinae) with a key to Indian species. - *Acta Zoologica Academiae Scientiarum Hungaricae* 58 (4), pp. 337-350.
- WEI, M. 1997: Five New Sawfly Species from East Asia (Hymenoptera: Tenthredinoidea). (In English, abstract in Chinese). - *Journal of Central South Forestry University*, Zhuzhou 17(Suppl.): 1-5.
- WEI, M. & NIE, H. 2002: Tenthredinidae. - : pp. 427-482. In: Li, Z.; Jin, D. (eds) 2002: *Insects from Maolan Landscape*. - Guizhou Science and Technology Publishing House, Guiyang: 615 pp.

Submitted: 17. 05. 2015

Accepted: 01. 06. 2015

Published: 31. 08. 2015