

The HD 93963 A transiting system: A 1.04 d super-Earth and a 3.65 d sub-Neptune discovered by TESS and CHEOPS

L. M. Serrano¹, D. Gandolfi¹, S. Hoyer², A. Brandeker³, M. J. Hooton⁴, S. Sousa⁵, F. Murgas^{6,7}, D. R. Ciardi⁸, S. B. Howell⁹, W. Benz^{4,10}, N. Billot¹¹, H.-G. Florén^{3,12}, A. Bekkelien¹¹, A. Bonfanti¹³, A. Krenn¹³, A. J. Mustill¹⁴, T. G. Wilson¹⁵, H. Osborn^{10,16}, H. Parviainen^{6,7}, N. Heidari^{17,18,2}, E. Pallé^{6,7}, M. Fridlund^{19,20}, V. Adibekyan⁵, L. Fossati¹³, M. Deleuil², E. Knudstrup^{21,22}, K. A. Collins²³, K. W. F. Lam²⁴, S. Grziwa²⁵, S. Salmon¹¹, S. H. Albrecht²¹, Y. Alibert⁴, R. Alonso^{6,26}, G. Anglada-Escudé^{27,28}, T. Bączny²⁹, D. Barrado y Navascués³⁰, S. C. C. Barros^{5,31}, W. Baumjohann¹³, M. Beck¹¹, T. Beck⁴, A. Bieryla³², X. Bonfils³³, P. T. Boyd³⁴, C. Broeg^{4,10}, J. Cabrera²⁴, S. Charnoz³⁵, B. Chazelas¹¹, J. L. Christiansen⁸, A. Collier Cameron¹⁵, P. Cortés-Zuleta², Sz. Csizmadia²⁴, M. B. Davies³⁶, A. Deline¹¹, L. Delrez^{37,38,11}, O. D. S. Demangeon^{5,31}, B.-O. Demory¹⁰, A. Dunlavy^{39,8}, D. Ehrenreich¹¹, A. Erikson²⁴, A. Fortier^{4,10}, A. Fukui^{40,41}, Z. Garai^{42,43,44,45}, M. Gillon³⁷, M. Güdel⁴⁶, G. Hébrard^{47,48}, K. Heng^{10,49}, C. X. Huang¹⁶, K. G. Isaak⁵⁰, J. M. Jenkins⁵¹, L. L. Kiss⁵², J. Laskar⁵³, D. W. Latham³², A. Lecavelier des Etangs⁵⁴, M. Lendl¹¹, A. M. Levine¹⁶, C. Lovis¹¹, M. B. Lund⁸, D. Magrin⁵⁵, P. F. L. Maxted⁵⁶, N. Narita^{40,57,41}, V. Nascimbeni⁵⁵, G. Olofsson³, R. Ottensamer⁵⁸, I. Pagano⁵⁹, A. C. S. V. Pessanha⁶⁰, G. Peter⁶¹, G. Piotto^{55,62}, D. Pollacco⁴⁹, D. Queloz^{63,64}, R. Ragazzoni^{55,62}, N. Rando⁶⁵, F. Ratti⁶⁵, H. Rauer^{24,66,67}, I. Ribas^{27,28}, G. Ricker¹⁶, P. Rowden⁶⁸, N. C. Santos^{5,31}, G. Scandariato⁵⁹, S. Seager^{16,69,70}, D. Ségransan¹¹, A. E. Simon⁴, A. M. S. Smith²⁴, M. Steller¹³, Gy. M. Szabó^{43,44}, N. Thomas⁴, J. D. Twicken⁷¹, S. Udry¹¹, B. Ulmer⁶¹, V. Van Grootel³⁸, R. Vanderspek¹⁶, V. Viotto⁵⁵, N. Walton⁷²

(Affiliations can be found after the references)

July 29, 2022

ABSTRACT

We present the discovery of two small planets transiting HD 93963 A (TOI-1797), a G0 V star ($M_{\star}=1.109 \pm 0.043 M_{\odot}$, $R_{\star}=1.043 \pm 0.009 R_{\odot}$) in a visual binary system. We combined TESS and CHEOPS space-borne photometry with MuSCAT 2 ground-based photometry, ‘Alopeke and PHARO high-resolution imaging, TRES and FIES reconnaissance spectroscopy, and SOPHIE radial velocity measurements. We validated and spectroscopically confirmed the outer transiting planet HD 93963 A c, a sub-Neptune with an orbital period of $P_c \approx 3.65$ d that was reported to be a TESS object of interest (TOI) shortly after the release of Sector 22 data. HD 93963 A c has a mass of $M_c = 19.2 \pm 4.1 M_{\oplus}$ and a radius of $R_c = 3.228 \pm 0.059 R_{\oplus}$, implying a mean density of $\rho_c = 3.1 \pm 0.7 \text{ g cm}^{-3}$. The inner object, HD 93963 A b, is a validated 1.04 d ultra-short period (USP) transiting super-Earth that we discovered in the TESS light curve and that was not listed as a TOI, owing to the low significance of its signal (TESS signal-to-noise ratio ≈ 6.7 , TESS + CHEOPS combined transit depth $D_b = 141.5_{-8.3}^{+8.5}$ ppm). We intensively monitored the star with CHEOPS by performing nine transit observations to confirm the presence of the inner planet and validate the system. HD 93963 A b is the first small ($R_b = 1.35 \pm 0.042 R_{\oplus}$) USP planet discovered and validated by TESS and CHEOPS. Unlike planet c, HD 93963 A b is not significantly detected in our radial velocities ($M_b = 7.8 \pm 3.2 M_{\oplus}$). The two planets are on either side of the radius valley, implying that they could have undergone completely different evolution processes. We also discovered a linear trend in our Doppler measurements, suggesting the possible presence of a long-period outer planet. With a V-band magnitude of 9.2, HD 93963 A is among the brightest stars known to host a USP planet, making it one of the most favourable targets for precise mass measurement via Doppler spectroscopy and an important laboratory to test formation, evolution, and migration models of planetary systems hosting ultra-short period planets.

Key words. Planets and Satellites: detection, fundamental parameters; instrumentation: photometers, spectrographs; methods: data analysis

1. Introduction

Following the discovery of the first planet orbiting a solar-like star (51 Peg b; Mayor & Queloz 1995), the field of exoplanets has continuously evolved at a fast pace, moving from the mere exploratory objective of finding new planets, to the aim of measuring their radii and masses and, when possible, of detecting and characterizing their atmospheres. This transition has been possible thanks to high-precision ground-based facilities, such as High Resolution Echelle Spectrometer (HIRES, Vogt et al. 1994), High Accuracy Radial velocity Planet

Searcher (HARPS, Mayor et al. 2003), High Accuracy Radial velocity Planet Searcher for the Northern hemisphere (HARPS-N, Cosentino et al. 2012), Echelle SPectrograph for Rocky Exoplanets and Stable Spectroscopic Observations (ESPRESSO, Pepe et al. 2021), and space-based missions such as Convection, Rotation et Transits planétaires (CoRoT, Baglin et al. 2006), Kepler (Borucki et al. 2010), Kepler-2 (K2, Howell et al. 2014), and, most recently, Transiting Exoplanet Survey Satellite (TESS Ricker et al. 2015). Data analysis techniques have also improved, providing an enhanced capability to disentangle the signature of an orbiting planet from the spectroscopic and photometric sig-

nals induced by stellar activity (e.g. [Hatzes et al. 2011](#); [Haywood et al. 2014a](#); [Serrano et al. 2018](#); [Hippke & Heller 2019](#); [Luque et al. 2021](#)).

Statistical analyses on the population of exoplanets thus far discovered have shown that about 25-30% of Sun-like stars in our Galaxy host super-Earths ($R_p = 1 - 2 R_\oplus$, $M_p = 1 - 10 M_\oplus$) and sub-Neptunes ($R_p = 2 - 4 R_\oplus$, $M_p = 10 - 40 M_\oplus$) in tightly packed systems with orbital periods shorter than 100 d (see, e.g. [Silburt et al. 2015](#); [Mulders et al. 2016](#)). One of the biggest surprises was the discovery of a population of exotic planets with orbital periods $P_{\text{orb}} \lesssim 1$ d, the so-called ultra-short period (USP) planets. With the exception of a small subgroup of giant planets (see, e.g. [Sahu et al. 2006](#)) and a couple of Neptune-sized objects (e.g. TOI-849 b and TOI-193 b; [Armstrong et al. 2020](#); [Jenkins et al. 2020](#)), most of the known USP planets are Earth-like objects or super-Earths ($R_p < 2 R_\oplus$), with CoRoT-7 b being the prototype of this class of objects ([Léger et al. 2009](#)).

Launched in December 2019, the *CHARacterizing ExOPlanet Satellite* (CHEOPS; [Benz et al. 2021](#)) is the first ESA small-class mission whose main goal is to perform high-precision photometry of bright stars ($V < 12$) known to host planets. CHEOPS is pursuing a variety of science goals, both in exoplanetary and stellar physics (some references, [Lendl et al. 2020](#); [Leleu et al. 2021](#); [Van Grootel et al. 2021](#); [Delrez et al. 2021](#); [Borsato et al. 2021](#); [Morris et al. 2021](#); [Swayne et al. 2021](#); [Szabó et al. 2021](#)). The mission is also discovering new transiting planets, such as HD 108236 f ([Bonfanti et al. 2021a](#)) and TOI-178 b, c, and f ([Leleu et al. 2021](#)).

To help the community arrange follow-up observations and report the detection of TESS exoplanets, specific systems that pass through a validation process attain the status of TESS objects of interest (TOIs). As a first step, the process confirms that the signal is real and astrophysical. Then, it performs a Bayesian model comparison with other astrophysical signals to show that the planetary hypothesis is overwhelmingly preferred. Finally, only transit events that surpass the signal-to-noise ratio $S/N \sim 7.1$ threshold are upgraded to the status of candidates and receive a TOI number (see [Guerrero et al. 2021](#), for further details). Some transit-like signals may not pass the validation process for various reasons. Simple examples may be single transits or two transits with a significant depth mismatch, as in the case of ν^2 Lupi b and c. Although the two planets already appeared transiting in TESS Sector 12, the star received a TOI number only one year after, when the data were visually inspected ([Kane et al. 2020](#)). Another case of non-detection by the TESS pipeline involves small planets, which can generate shallow transit-like signals with $S/N < 7.1$. Since small planets are common and the S/N threshold has been chosen to minimize the false alarm rate ([Jenkins et al. 2016a](#)), there may be transiting exoplanets not being identified and followed up, even if they are part of systems where TOIs have already been assigned.

The confirmation of less significant transit signals may be performed through other means, such as radial velocity (RV) follow-up observations of the star (see, as an example, TOI-421; [Carleo et al. 2020](#)). However, using Doppler spectroscopy to confirm a planet may be time-consuming. Transiting planet candidates with low significant transit signals in TESS light curves can be efficiently vetted against false alarm detections by performing space-based photometric follow-up observations of the predicted transits with a more precise instrument.

Within the CHEOPS Guaranteed Time Observation (GTO) programme, we perform CHEOPS photometric follow-up observations of mostly bright ($V < 11$) TOIs with the immediate objective of identifying additional small planet candidates.

This is done by performing high-precision photometry of transiting planet candidates with a non-significant transit detection in TESS light curves ($S/N < 7.1$). As transiting planet candidates in multiple systems have a much lower probability of being false positives ([Latham et al. 2011](#)), we mainly focus on low S/N non-TOI candidates in systems known to host at least one TOI candidate. Identifying new non-TOIs orbiting a TOI target opens up the possibility of increasing both the number of known multi-planet systems, and the number of planets in an already known multi-planet system. Furthermore, by construction, this programme delivers viable targets for RV follow-up campaigns and improved transit parameters and ephemerides.

As part of CHEOPS GTO programs CHEOPS Objects of Interest (CHOI, PR110045) and CHESS (PR110031), we photometrically monitored the brightest component of the visual binary HD 93963, also known as TOI-1797 (Table 1). HD 93963 A is a bright ($V = 9.2$) G0 V, nearby (82 pc) star found to host a 3.65 d sub-Neptune candidate, which was reported as likely being a planet in [Giacalone et al. \(2021\)](#) with the name TOI-1797.01. We independently searched the TESS light-curve for possible candidates, and identified an additional transit signal with a period of 1.04 d that was not included in the TOI candidates list due to its low $S/N \sim 6.7$. Here, we report on the discovery of this additional ultra short-period transiting planet, as well as the validation and radius determination of both bodies. This result was made possible thanks to the photometric observations carried out with CHEOPS. With its high precision and high scheduling flexibility CHEOPS was the only instrument capable of clearly detecting the transit signal induced by the 1.04 d planet, making HD 93963A the first system with an ultra-short period planet discovered and validated by CHEOPS.

The present paper is organized as follows. In Section 2 we present the TESS data and our independent search for transit signals. Section 3 briefly describes the CHEOPS mission and presents the strategy of our observations and the data reduction. Section 4 presents the high-resolution imaging observations of HD 93963 A and its stellar companion HD 93963 B. Section 5 presents the spectra used for the stellar characterization (Section 6). Section 7 is dedicated to the analysis of the TESS and CHEOPS light curves and the determination of the parameters of HD 93963 A b and c. The validation of both planets is discussed in Section 8. In Section 9, we report the analysis of SOPHIE RV follow-up data and the measurement of HD 93963 A c mass. Section 10 describes the planetary system orbiting HD 93963 A, with empirical estimates of the masses of the two discovered planets and it discusses some of the possible migration theories that may be relevant to our system. In this section, we also present the importance and the impact of our discovery on future science.

2. TESS observations

2.1. Data collection

TESS observed HD 93963 A in Sector 22, during year 2 of its nominal mission, from 18 February to 18 March 2020, with data from the target stacked and telemetered at 2-minute cadence. The space telescope monitored the star using camera #1 and CCD #3 (each CCD has a field of view of $\text{FoV} = 12^\circ \times 12^\circ$; [Ricker et al. 2015](#)). In addition to a 1 day gap due to the data downlink during perigee passage, the TESS observations of HD 93963 A were affected by significant moon-light contamination, resulting in the removal of 2 additional days of data at the beginning of each half sector. Overall, a total of 5 d of data was removed from the Sec-

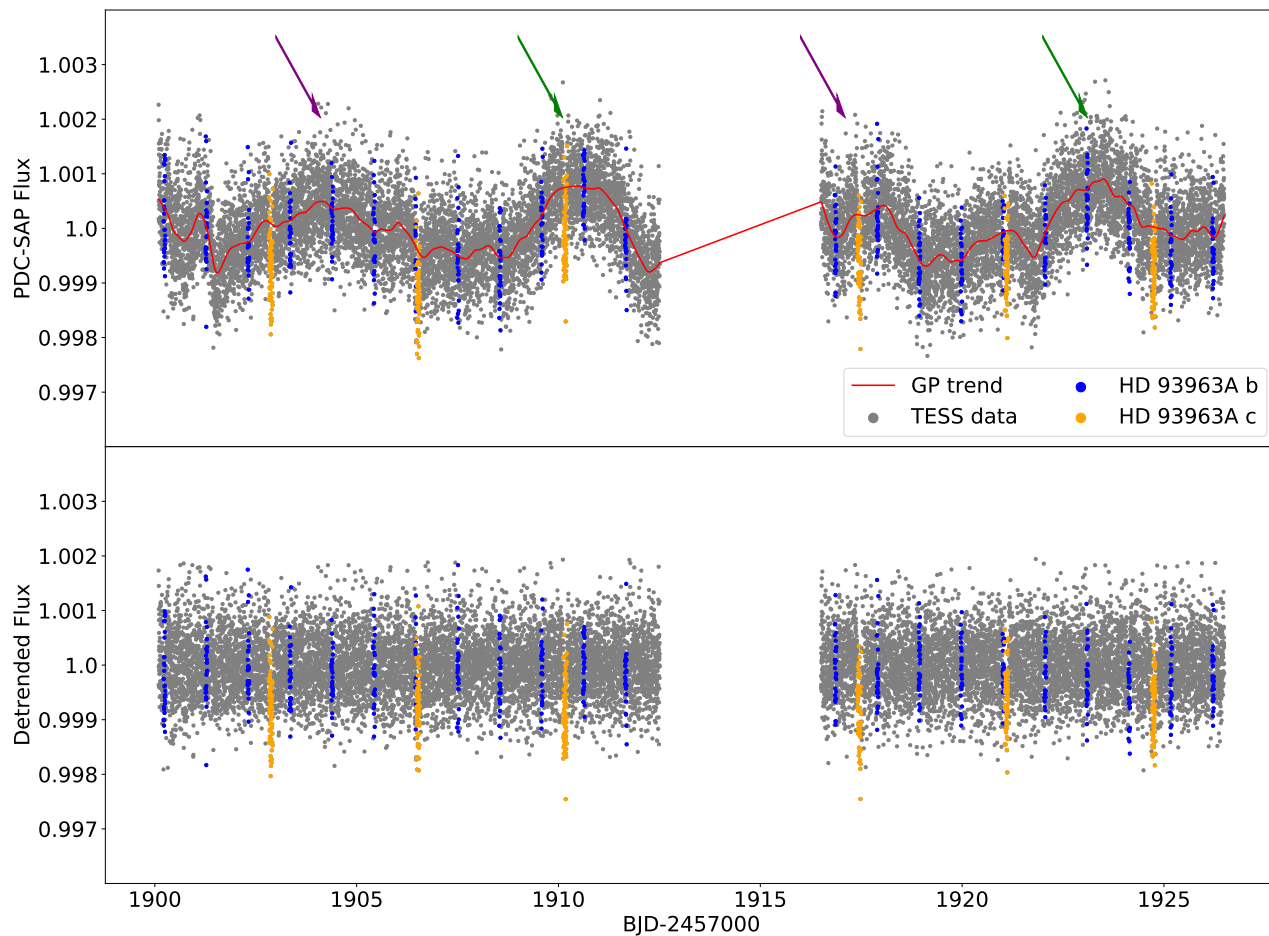


Fig. 1. TESS light curve of HD 93963 A. In-transit data points of the 3.65 d and the 1.04 d candidate are marked in yellow and blue, respectively. *Upper panel:* PDC-SAP flux (grey) and detrending model (red), as obtained with `cit1alicue` (Sect. 2.2). The arrows point to the repeated maxima we identified in the light curve: the purple arrows points to the maximum at ~ 1905 (BJD-2457000) and at its repetition at ~ 1918 (BJD-2457000). The green arrows point to the second maxima, that appears at ~ 1911 (BJD-2457000) and at ~ 1924 (BJD-2457000). *Lower panel:* detrended flux.

tor. The TESS target pixel files were processed and calibrated by the Science Processing Operation Center (SPOC; Jenkins et al. 2016b) at the NASA Ames Research Center. The light curve was extracted using simple aperture photometry (SAP; Twicken et al. 2010; Morris et al. 2020) and processed using the Presearch Data Conditioning (PDC) algorithm, which uses a Bayesian maximum a posteriori approach to remove the majority of instrumental artefacts and systematic trends (Smith et al. 2012; Stumpe et al. 2012, 2014). We retrieved the PDC-SAP TESS light curve of HD 93963 A from the Mikulski Archive for Space Telescope (MAST¹; see the upper panel of Fig. 1).

The SPOC team searched the PDC-SAP light curve for transit-like signals, using a pipeline that iteratively performs multiple transiting planet searches and stops when it fails to find subsequent transit-like signatures above the detection threshold of $S/N \sim 7.1$. On 28 March 2020, SPOC published the results in the Data Validation Report (DVR; Twicken et al. 2018; Li et al.

2019). The TESS vetting team at the Massachusetts Institute of Technology (MIT) inspected the DVR to review the Threshold Crossing Events (TCEs), and later announced the detection of a transiting planetary candidate (TOI 1797.01 Guerrero et al. 2021) with a period of $P_{\text{orb}} \approx 3.65$ d, a depth of about 800 ppm, and a duration of $T_{14} \approx 2.0$ h. The candidate passed all the automatic validation tests from the TCE, such as odd-even transit depth variation and ghost diagnostic tests.

2.2. Independent transit search

In order to confirm the presence of the 3.65 d TOI announced by the TESS team and look for additional planet candidates, we independently searched the PDC-SAP TESS light-curve for transit signals. In order to do so, we applied different detrending algorithms and methodologies as described below.

Method 1: We filtered out the variability of the light-curve using the Savitzky-Golay method (Savitzky & Golay 1964; Press et al. 2002) and applied the Détection Spécialisé de Transits

¹ <https://mast.stsci.edu>.

Table 1. Main identifiers, equatorial coordinates, optical and infrared magnitudes, and the fundamental parameters of HD 93963 A.

Parameter	Value	Source
<i>Main identifiers</i>		
HD	93963 A	ExoFOP ^b
TOI	1797	TIC v8 ^a
TIC	368435330	TIC v8 ^a
TYC	1977-02600-1	ExoFOP
2MASS	J10510650+2538281	ExoFOP
<i>Gaia</i> EDR3	729899906357408768	<i>Gaia</i> EDR3 ^c
<i>Equatorial coordinates, distance, and radial velocity</i>		
R.A. (J2000.0)	10 ^h 51 ^m 06.51 ^s	<i>Gaia</i> EDR3
Dec. (J2000.0)	25°38′28.19″	<i>Gaia</i> EDR3
Distance (pc)	82.34 ± 0.39	TIC v8
Radial Velocity (km s ⁻¹)	13.28 ± 0.02	This work
<i>Optical and near-infrared photometry</i>		
TESS	8.6259 ± 0.006	TIC v8 ^c
<i>B</i>	9.771 ± 0.042	TIC v8
<i>V</i>	9.182 ± 0.003	TIC v8
<i>J</i>	8.108 ± 0.034	TIC v8
<i>H</i>	7.807 ± 0.034	TIC v8
<i>K</i>	7.776 ± 0.024	TIC v8
<i>W</i> ₁	7.68 ± 0.03	<i>AllWISE</i> ^d
<i>W</i> ₂	7.73 ± 0.02	<i>AllWISE</i>
<i>W</i> ₃	7.709 ± 0.019	<i>AllWISE</i>
<i>W</i> ₄	7.549 ± 0.158	<i>AllWISE</i>
<i>Fundamental parameters</i>		
<i>T</i> _{eff} (K)	5987 ± 64	This work
log <i>g</i> _★ (cgs)	4.49 ± 0.11	This work
log <i>R</i> ' _{HK}	-4.63 ± 0.05	This work
[Fe/H] (dex)	0.10 ± 0.04	This work
[Mg/H] (dex)	0.08 ± 0.06	This work
[Si/H] (dex)	0.08 ± 0.04	This work
<i>v</i> _{mic} (km s ⁻¹)	1.15 ± 0.03	This work
<i>v</i> _{mac} (km s ⁻¹)	4.1 ± 0.4	This work
<i>v</i> sin <i>i</i> _★ (km s ⁻¹)	5.9 ± 0.8	This work
<i>M</i> _★ (<i>M</i> _☉)	1.109 ± 0.043	This work
<i>R</i> _★ (<i>R</i> _☉)	1.043 ± 0.009	This work
<i>P</i> _★ (days)	12.8 ± 1.8	This work
<i>ρ</i> _★ (<i>ρ</i> _☉)	1.387 ± 0.064	This work
<i>L</i> _★ (<i>L</i> _☉)	1.254 ± 0.058	This work
Age (Gyr)	1.4 ^{+0.8} _{-0.4}	This work
<i>A</i> _V (mag)	0.10 ± 0.05	This work

^a Stassun et al. (2018).^b <https://exofop.ipac.caltech.edu/tess>.^c *Gaia* Collaboration et al. (2018, 2021a).^d Cutri & et al. (2013).

(DST; Cabrera et al. 2012), which searches for transits using a parabolic function as a transit model. In addition to the detection algorithm, we also used the information retrieved from the TESS data release notes and DVR, to assess and remove signals arising from possible astrophysical false positives or systematics.

Method 2: We modelled the stellar activity modulation using the Gaussian Process (GP) implemented within the public code *citlalicue* (Barragán et al. 2021). Briefly, the routine masks out the planetary transits and bins the data using 3 h bins.

It performs an iterative maximum likelihood optimization coupled with a 5-sigma clipping algorithm, in order to fit a GP with quasi-periodic kernel and remove possible outliers. To maximize the performance of *citlalicue*, we masked out the transits of the 3.65 d planet, as they can affect the modelling of the stellar activity signal. We flattened the light curve, dividing the full PDC-SAP time series (including the data points previously masked out) by the retrieved correlation model and we searched the TESS detrended light curve for transits, by repeatedly applying the Transit Least Square algorithm (TLS, Hippke & Heller 2019). TLS performs a least square minimization on the entire non binned light-curve, modelling the transit with a quadratic limb darkening law, as described in Mandel & Agol (2002).

Method 3: We used an out-of-box polynomial fit (which by its nature leaves transits untouched) to remove variability from the light curve. Then, as in the case of *Method 2*, we iteratively performed a TLS periodic search and masked the detected transit events, until no significant signal remained.

Method 4: We applied the detection pipeline EXOTRANS to the TESS light curve. EXOTRANS removes discontinuities and stellar variability with the wavelet-based filter VARLET (Grziwa et al. 2016), and routinely searches for transits applying an advanced version of the Box Least-Squares algorithm (BLS; Kovács et al. 2016). EXOTRANS can detect multiple transit signals and-or transits masked by other strong periodic events (such as systematics, background binaries).

Each of the four different methods confirmed the 3.65 d transit candidate announced by the TESS team and unveiled the presence of a possible additional transit signal with a period of 1.04 d, a depth of ~140 ppm, and a duration of ~2 h. This transit has a S/N ~ 6.7, which is below the detection threshold adopted by the TESS team (S/N ~ 7.1). We thus focused our efforts on understanding the nature of this signal performing further photometric observations and complementary high-resolution imaging and Doppler spectroscopy.

3. CHEOPS observations

In order to confirm the transit signal at 1.04 d, validate the planetary system, and precisely determine the radius of the two planets, we performed CHEOPS photometric follow-up observations of HD 93963 A between February and April 2021. We started by verifying whether we could detect the additional planet candidate at 1.04 d. A modelling of TESS transits² provided the following ephemeris: $P = 1.03897 \pm 0.00035$ d and $T_0(\text{BJD}^3) = 2458901.279 \pm 0.004$ d. Due to the relatively short baseline of the TESS light curve (~28 d) and the low significance of our detection (S/N ≈ 6.7), the propagated uncertainty on the predicted time of transit in February 2021 (nearly one year after the TESS observations) amounted to ~3 h. Given the short orbital period of the candidate (1.04 d), we decided to follow a conservative approach and continuously observe HD 93963 A for nearly 1.3 d⁴, centring our observations around the transit that was expected to occur on 07 February 2021 (UTC). Taking into account the transit duration (~2 h), this would have allowed us to cover at least one full transit, regardless of the uncertainties on the transit time, while having a long out-of-transit baseline to properly detrend the data.

² We modelled the detrended TESS light curve following the same methodology described in Sect. 7.

³ throughout the paper BJD stands for BJD_TDB

⁴ Corresponding to one visit of 19 CHEOPS orbits around the Earth.

Table 2. List of CHEOPS observations for HD 93963 A with start and end date, number of data points, and terms used to decorrelate the respective light curves using `pycheops`. The parameters $\sin \phi$ and $\cos 2\phi$ are roll angle corrections, dx and dy are the x and y-axis centroid position, while dt and dt^2 are a first and second order time trend, respectively (please refer to [Maxted et al. 2022](#), for a detailed explanation of the decorrelation terms).

Planet	File key	Start date (UTC)	End date (UTC)	Frames	<code>pycheops</code> correlation terms
b	CH_PR110045_TG001301_V0200	2021-02-07 09:14	2021-02-08 16:31	1346	$\sin \phi$, dt , dx , dt^2
b	CH_PR110045_TG001601_V0200	2021-02-24 11:11	2021-02-24 20:57	439	background, dt
b	CH_PR100031_TG037201_V0200	2021-03-02 17:06	2021-03-03 01:12	381	background, dt
b	CH_PR110045_TG001801_V0200	2021-03-05 15:41	2021-06-03 04:15	641	background, dt , dt^2
b	CH_PR110045_TG001901_V0200	2021-03-07 19:28	2021-03-08 08:31	598	background, dt , dt^2
b	CH_PR110045_TG002001_V0200	2021-03-13 00:53	2020-06-24 13:57	596	dt , dt^2
b	CH_PR110045_TG002301_V0200	2021-03-16 23:43	2021-03-18 02:06	1219	background, dt , dt^2 , dy
b	CH_PR100031_TG039701_V0200	2021-04-19 12:21	2021-04-19 19:35	358	background, dx , dt
c	CH_PR100031_TG039601_V0200	2021-04-20 20:38	2021-04-21 09:53	618	background, $\sin \phi$, $\cos 2\phi$, dt

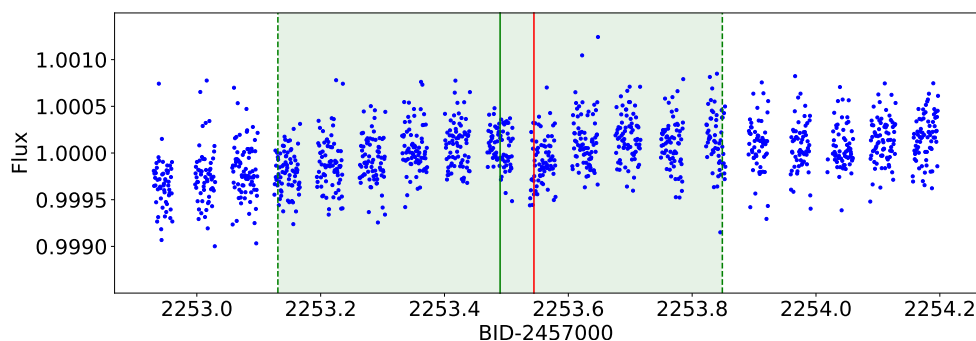


Fig. 2. Raw data points of the first CHEOPS visit (blue circles). The transit of the 1.04 d planet is visible at the centre of the visit. The mid-transit time, as predicted by the TESS ephemeris, is highlighted with a vertical green line, while the area coloured in light green is the corresponding 3σ interval of confidence. The mid-transit time predicted with the ephemeris in the third column of Table 5 is marked with a vertical red line. The time difference between the red and the green lines is ~ 1 h.

Figure 2 shows the raw CHEOPS light curve of the first visit of HD 93963 A. The gaps in the time series are due to the Earth’s occultation and the passage of the spacecraft above the South Atlantic Anomaly (SAA)⁵. A visual inspection of the light curve revealed the presence of a transit-like feature with a duration and depth compatible with those of the transits observed by TESS and occurring ~ 1 h after the predicted time of mid-transit. We jointly modelled the TESS and CHEOPS light curve following the same methods described in Sect. 7 and refined the period ($P = 1.0391581 \pm 0.0000387$ d).

With one single CHEOPS visit we ‘upgraded’ the 1.04 d signal to planetary candidate and improved the precision on its period estimate by one order of magnitude. We decided to keep observing the candidate, scheduling seven shorter CHEOPS visits of the 1.04 d transit candidate and stopped the follow-up when we reached a precision on the planetary radius of $\sim 3\%$. For the sake of completeness, we also observed one transit of the 3.65 d TOI candidate and verified the achromaticity of the event. The observations were performed with a global efficiency (duty cycle) higher than 50%. Table 2 reports the starting and ending time of each CHEOPS visit, along with the number of data points.

3.1. CHEOPS data reduction

CHEOPS data for each visit is downlinked to the ground as packages of circular images with a diameter of 200 px centred

⁵ Data collected during an SAA passage are usually not transmitted to Earth, owing to the large number of cosmic ray hits.

around the target star. Those images, referred to as “subarrays”, are small windows of the CHEOPS CCD, whose sky-projected area has a diameter of about 200”, which corresponds to $\sim 4\%$ of the full CHEOPS field of view (FoV). The subarrays were automatically processed with the latest version of the Data Reduction Pipeline (DRP; [Hoyer et al. 2020](#)), DRP v13, which includes bias and dark subtraction, non-linearity and flat field correction. In addition, the DRP corrects for sky-background, cosmic-ray hits, and smearing trails of nearby stars. The DRP performs aperture photometry on the processed CHEOPS images using different circular masks centred around the target. The mask follows the movements of the star due to the spacecraft pointing jitter and telescope rolling around the optical axis, which ensures a thermally stable environment of the payload radiators. The circular photometric masks can have three different standard sizes, namely, the RINF, DEFAULT, and RSUP apertures with radii of 22.5, 25.0, 30.0 pixels, respectively. In addition, the DRP also extracts the photometric flux using an OPTIMAL aperture which radius is estimated independently for single visits. The OPTIMAL aperture is intended to minimize the instrumental noise and contamination level from nearby stars. The DRP extraction provides the user with a series of vectors that allow one to model instrumental and environmental effects. Users can retrieve from the data the orbital roll-angle ϕ of the telescope, the x and y position in the CCD of the centre of the target’s point spread function (PSF), the estimated sky background level, the smear curve, and the contamination by PSFs of background stars (please refer to [Hoyer et al. 2020](#), for additional details on how the contamination is treated by the DRP).

Table 3. G-band magnitude, parallax, proper motion, and renormalized unit weight error (RUWE) of HD 93963 A and its companion, as retrieved from the *Gaia* EDR3.

Star	<i>Gaia</i> ID	Distance (arcsec)	G magnitude	Parallax (mas)	PM(RA) (mas/yr)	PM(Dec) (mas/yr)	RUWE
HD 93963 A and its companion							
TIC 368435330	729899906357408768	...	9.040 ± 0.003	12.151 ± 0.017	-92.833 ± 0.014	-22.911 ± 0.014	1.04
TIC 368435331	729899906357408640	5.9''	16.906 ± 0.004	11.940 ± 0.128	-90.705 ± 0.110	-22.993 ± 0.093	0.95
Nearby brightest stars							
TIC 368435329	729899902062379776	16.8''	17.506 ± 0.003	0.045 ± 0.136	-5.122 ± 0.108	-6.519 ± 0.113	1.177
TIC 900011362	729712126092040192	72.7''	19.154 ± 0.004	0.709 ± 0.310	-5.287 ± 0.246	-7.272 ± 0.231	0.983
TIC 900011363	729712160451779200	76.7''	18.719 ± 0.004	0.308 ± 0.222	-15.072 ± 0.183	-9.396 ± 0.185	0.977
TIC 900012677	729900211299738240	110.1''	19.322 ± 0.004	-0.474 ± 0.326	-0.858 ± 0.266	-3.560 ± 0.236	0.907
TIC 368435333	729876606159465088	124.9''	17.764 ± 0.003	0.343 ± 0.138	-0.913 ± 0.103	-7.669 ± 0.101	1.020

We also extracted PSF photometry on the CHEOPS images, using the python module⁶ PIPE (Brandeker et al., in prep.). Point-spread function photometry has the advantage of being less sensitive to contaminants than aperture photometry, which makes it particularly well suited for crowded fields or when there is a suspected contaminant. In addition, with PIPE we can also remove the smear effect in advance. We used the observations of HD 93963 A to derive an empirical PSF, used by PIPE to extract the photometry. As such, PIPE provides as output a FITS file that includes the extracted light curve and the same decorrelation vectors provided by the DRP, with the exception of smearing and contamination. The difference in RMS between DRP and PIPE light curves is only ~ 30 ppm, but as the PSF photometry can better account for the noise due to the closest contaminants, we decided to use PIPE extracted light curves for our analysis.

3.2. CHEOPS light curve detrending

We detrended the nine CHEOPS visits with the code `pycheops` (Maxted et al. 2022), which allows one to de-correlate the data using the vectors that describe the short-term instrumental photometric trends: roll angle, centroid movements, smear curve, and contamination by background stars. `pycheops` can also detrend the CHEOPS light curves using simple linear or quadratic trends.

We first applied a 3σ clipping algorithm as implemented in `pycheops` to remove outliers from the CHEOPS data and analysed each visit individually to check if it is affected by any of the known CHEOPS instrumental systematics. We excluded from the process the smear and contamination effects, because they are already accounted for by the PIPE extraction. We chose the detrending vectors via a Bayes factor pre-selection method (Trotta 2007), which routinely fits each visit with a least mean square method, accounting for the transit model and one of the possible decorrelation terms. In Table 2, we report those terms for which we obtained a Bayes factor lower than 1. We performed preliminary modelling of the eight CHEOPS visits of the 1.04 d transit signal using Markov Chain Monte Carlo simulations implemented in `pycheops`, including the effects of both the transits and the decorrelation terms listed in Table 2. For the 3.65 d candidate, we applied the same methodology adopted for the visits of the 1.04 d transit signal. We finally flattened the light curves, dividing the data by the inferred model of the instrumental noise. Figures 3 and 4 show the 8 detrended transit light curves of the 1.04 d candidate and the detrended single visit of the 3.65 d candidate, respectively, as observed with CHEOPS.

⁶ Available at <https://github.com/alphapsa/PIPE>.

4. Ground-based photometry and imaging

Stellar companions, projected closely on the sky, whether bound or unbound (such as a faint nearby eclipsing binary (NEB)) can create false positive signals and provide “third-light” that will dilute the transit signal. Unaccounted for “third-light” in a transit fit will cause the derived planet radius to be underestimated (Ciardi et al. 2015) and can even lead to non-detection of small planets (Lester et al. 2021). Given that nearly one-half of solar-like stars are binary (Matson et al. 2018), high-resolution imaging may help avoid incorrect interpretations of any detected exoplanet.

4.1. LCOGT 1m observations

We observed a full transit of HD 93963 c in Pan-STARRS Y-band on UT 2021 January 27 from the Las Cumbres Observatory Global Telescope (LCOGT; Brown et al. 2013) 1.0 m network node at McDonald Observatory in near Fort Davis, Texas. The telescope is equipped with the 4096×4096 SINISTRO camera having an image scale of $0.389''$ per pixel, resulting in a $26' \times 26'$ field of view. The images were calibrated by the standard LCOGT BANZAI pipeline (McCully et al. 2018), and photometric data were extracted using AstroImageJ (Collins et al. 2017). Circular photometric apertures with radius of $9.7''$ were used to extract the differential photometry. The target star aperture also includes most of the flux from the companion TIC 368435331, which is the nearest TESS Input Catalog and *Gaia* EDR3 neighbour and which we refer to as HD 93963 B. We detected a low signal-to-noise, roughly 900 ppt event, having transit timing consistent with the ephemeris derived from the TESS and CHEOPS data presented in this work (see Figure 5).

4.2. MuSCAT 2 observations

On 21-22 May 2021, HD 93963 A was observed with the MuSCAT2 multi-colour imager (Narita et al. 2019) mounted at the 1.52 m Telescopio Carlos Sanchez (TCS) of Teide Observatory (Tenerife, Spain). MuSCAT2 can perform simultaneous photometry in 4 broad passbands, namely, the g (400-550 nm), r (550-700 nm), i (700-820 nm), and z_s (820-920 nm) bands. The data calibration and photometric extraction was done using the dedicated MuSCAT2 pipeline (Parviainen et al. 2019). The observation aimed at verifying that the 1.04 d signal is not caused by a nearby eclipsing binary (NEB). To this purpose, we used the z_s and i filters to observe HD 93963 A with 2 and 3 s exposure times, respectively, and the other 2 filters to take 30 s exposures to increase the S/N of nearby stars. Of the two ob-

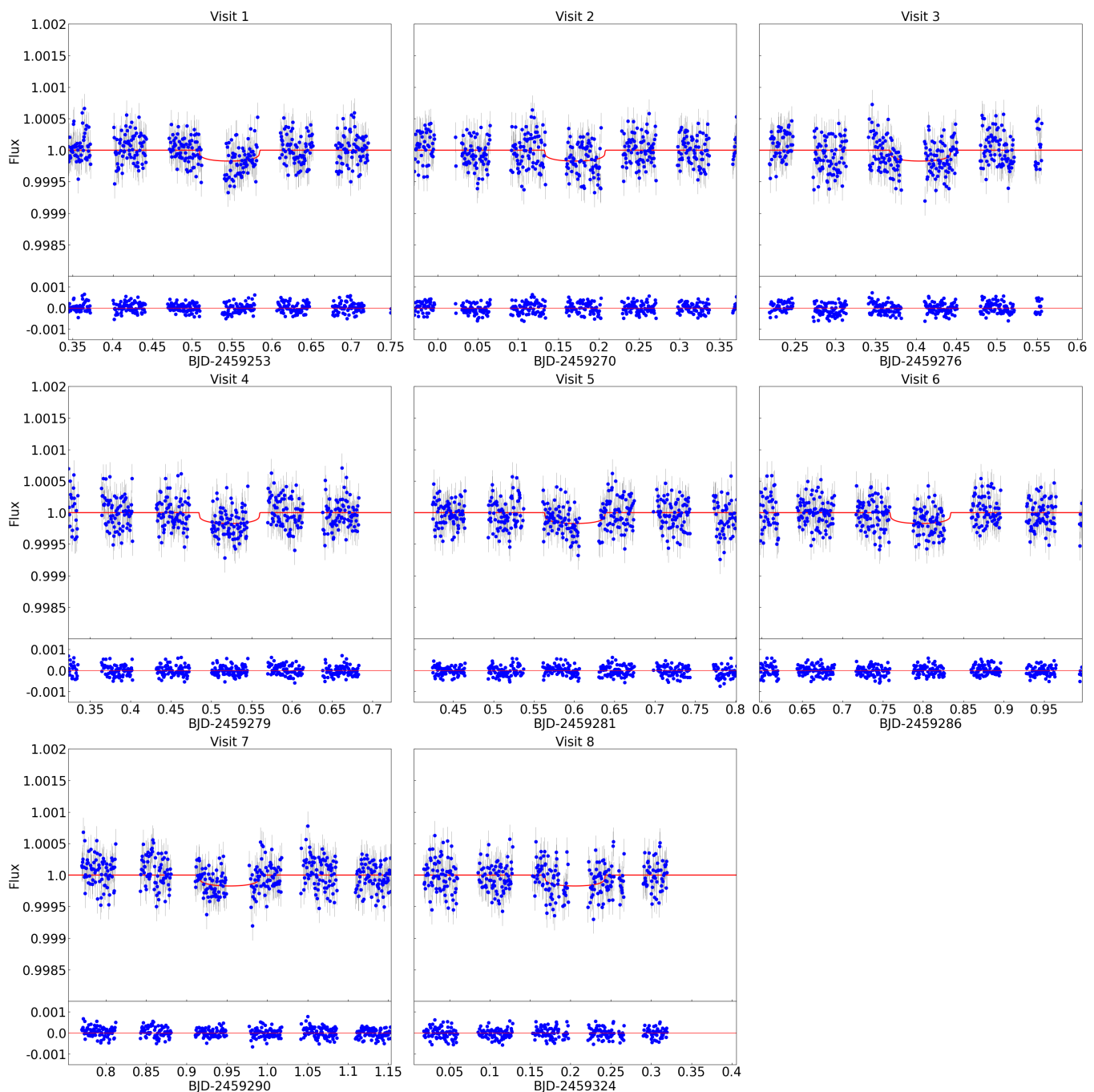


Fig. 3. The eight detrended CHEOPS light curves of planet b. In each plot, the upper panels show the detrended flux (blue circles) with the best-fitting transit model (red line). The lower panels display the residuals, with the zero-level marked as a red line.

serving runs, only the observations of 21 of May 2021 were useful to search for NEBs. While the 1.04 d transit could not be confirmed to be on target due to the shallow signal, the MuSCAT 2 observations rule out a scenario where the nearby star TIC 368435329 (star 7 in Fig. 6) would be an eclipsing binary causing the 1.04 d transit signal. The star is not resolved in TESS photometry; on the contrary, it is resolved in MuSCAT 2 photometry, and an eclipse deep enough to cause the transit signal candidate would have been detectable from the MuSCAT 2 photometry. The *Gaia* catalogue contains two additional nearby stars that are not resolved in the MuSCAT 2 photometry. One of these two is too faint (*G* magnitude above 19.5) to produce the 1.04 d signal, but the brighter one, the companion HD 93963 B

(see Table 3), can cause an event with a maximum depth of ≈ 1800 ppm (corresponding to complete disappearance of the star). In total, the MuSCAT 2 photometry does not allow to rule out a scenario where the transit signal arises from an eclipse of the unresolved bright nearby star, but this would require the star to present eclipses with a depth of 20 %-40 %.

4.3. ‘Alopeke speckle imaging

HD 93963 A was observed on 09 June 2020 UT using the ‘Alopeke speckle instrument on the Gemini North 8-m tele-

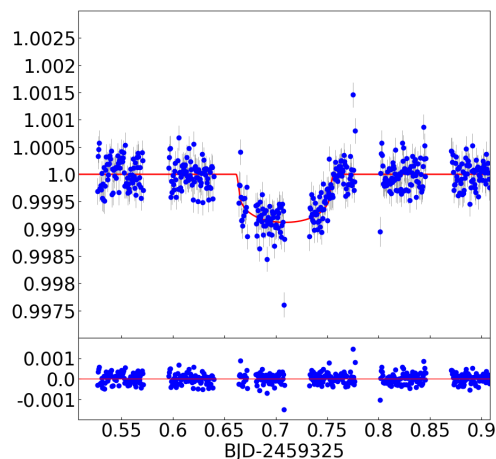


Fig. 4. The detrended CHEOPS light curve of planet c and best fitting transit model (upper panel). Residuals are displayed in the lower panel.

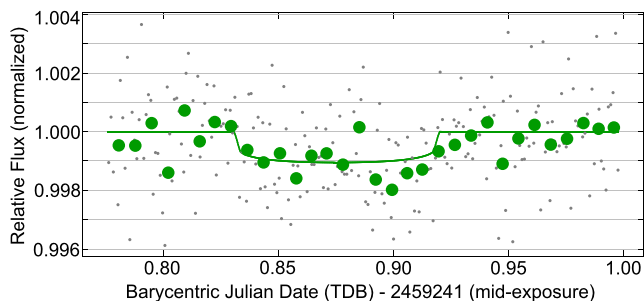


Fig. 5. Ground-based follow-up light curve of TOI-1797 b on UTC 2021 January 27 from the LCOGT 1 m network in PanSTARRS Y-band. The grey filled circles show the photometry from the individual exposures. The green filled circles show the results in 10 minute bins. The fitted transit centre time is 2459241.875 BJD, and is consistent with the ephemeris extracted from the TESS and CHEOPS data in the work.

scope⁷. ‘Alopeke provides simultaneous speckle imaging in two bands (562 nm and 832 nm) with output data products including a reconstructed image with robust contrast limits on companion detections (Howell et al. 2016). Five sets of 1000×0.06 s exposures were collected and subjected to Fourier analysis in our standard reduction pipeline (Howell et al. 2011). Figure 7 shows our 5σ contrast curves and the 832 nm reconstructed speckle image. The analysis of Gemini data showed that HD 93963 A has no companion brighter than 5-9 magnitudes below that of the target star from the diffraction limit (20 mas) out to $1.2''$. At the distance of HD 93963 A ($d = 82$ pc) these angular limits correspond to spatial limits of 1.8 to 98 AU. Please refer to Section 8.1 for further analyses on the contamination induced by more distant stars.

4.4. PHARO adaptive optics imaging

We observed HD 93963 A with infrared high-resolution adaptive optics (AO) imaging at Palomar Observatory. On 23 February 2021, we used the PHARO instrument (Hayward et al. 2001) behind the natural guide star AO system P3K (Dekany et al.

⁷ <https://www.gemini.edu/sciops/instruments/alopeke-zorro/>.

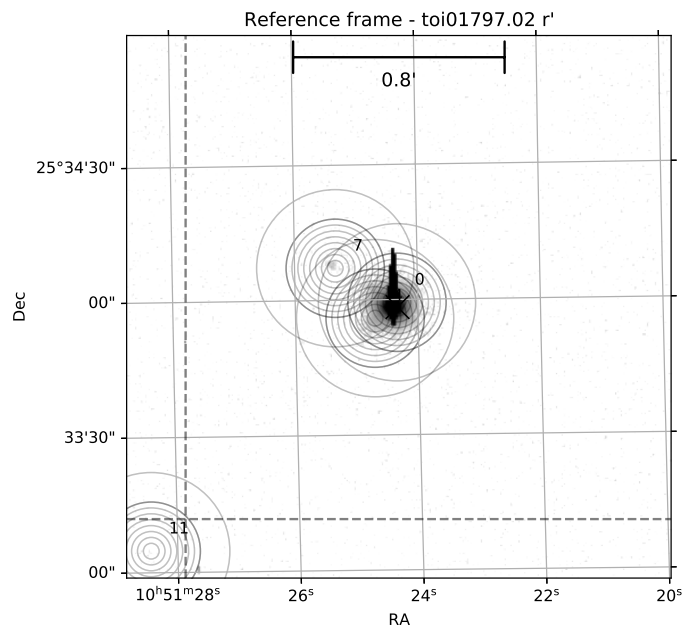


Fig. 6. MuSCAT 2 zoomed r -band field of view. HD 93963 A (star ID 0) was saturated on purpose to search for transit event around nearby stars. MuSCAT 2 observations ruled out star ID 7 (TIC 368435329) as the one with the 1.04 d transit signal.

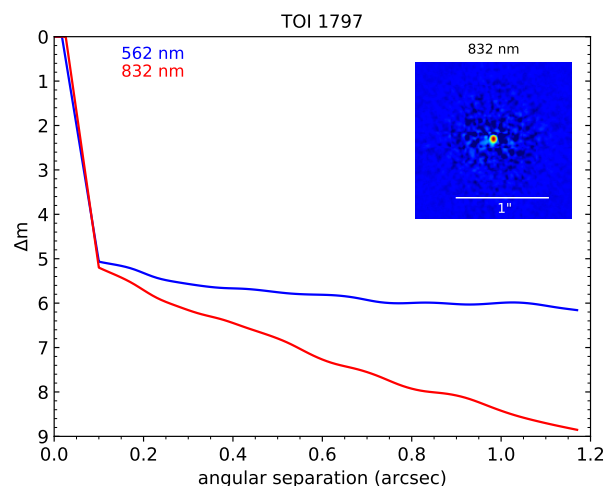


Fig. 7. Gemini North/Alopeke 5-sigma contrast curves and the 832 nm reconstructed speckle image

2013) in a standard 5-point dither pattern with steps of $5''$. The dither positions were offset from each other by $0.5''$, and three observations were made at each position for a total of 15 frames. The camera was in the narrow-angle mode with a full field of view of $\sim 25''$ and a pixel scale of approximately $0.025''$ per pixel. Observations were made in the narrow-band $Br\text{-}\gamma$ filter ($\lambda_o = 2.1686$; $\Delta\lambda = 0.0326 \mu\text{m}$) with an integration time of 4.2 seconds per frame (63 seconds total on-source).

We processed and analysed the AO data with a custom set of IDL tools. The science frames were flat-fielded and sky-subtracted. We generated the flat fields from a median average of dark subtracted flats taken on-sky and we normalized them such that the median value of the flats is unity. We then generated the sky frames from the median average of the 15 dithered science

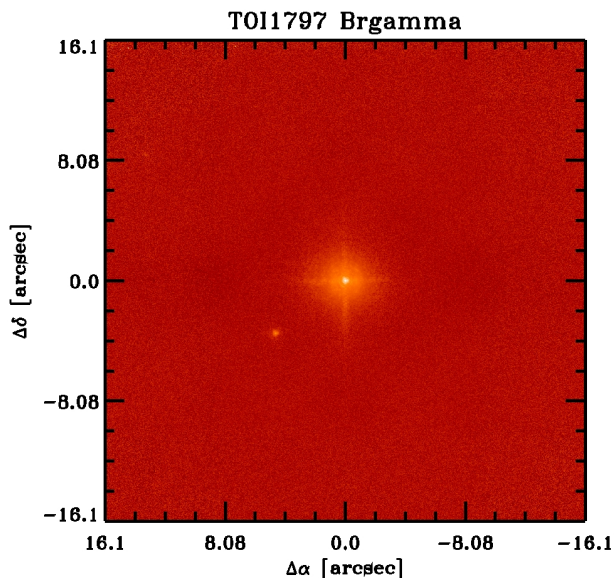


Fig. 8. Final combined mosaic of NIR adaptive optics image constructed from the 15-point dither pattern. The nearby companion TIC 368435331 (Gaia DR3 729899906357408640) is clearly detected $\sim 6''$ to the south-west of HD 93963 A

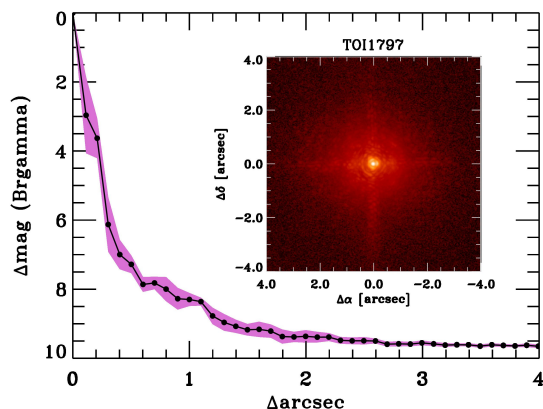


Fig. 9. Companion sensitivity for the Palomar adaptive optics imaging. The black points represent the 5σ limits and are separated in steps of 1 FWHM ($\sim 0.097''$); the purple represents the azimuthal dispersion (1σ) of the contrast determinations (see text). The inset image is of the primary target showing no additional companions to within $3''$ of the target.

frames and we sky-subtracted each flat-fielded science image. Finally, we combined the reduced science frames into a single combined image using an intra-pixel interpolation that conserves flux, shifts the individual dithered frames by the appropriate fractional pixels, and median-coadds the frames (Fig. 8).

We determined the final resolution of the combined dither ($0.0998''$) from the full-width at half-maximum of the point spread function (Fig. 9). We retrieved the sensitivities of the final combined AO image by injecting simulated sources azimuthally around the primary target every 20° at separations of integer multiples of the central source’s full width at half maximum (FWHM; Furlan et al. 2017). The brightness of each injected source was scaled until standard aperture photometry detected it with 5σ significance. The resulting brightness of the

injected sources relative to the target sets the contrast limits at that injection location. We finally calculated the 5σ limit at each separation by averaging all of the determined limits at that separation and we set the uncertainty on the limit as the root mean square (RMS) dispersion of the azimuthal slices at a given radial distance (Fig. 9). We confirmed the presence of the single companion to HD 93963 A, located $5.9''$ to the south-west (position angle $PA = 127 \pm 1^\circ$). The stars were first catalogued as a binary by Mugrauer & Michel (2021), due to the consistency between their attributed distances and proper motions (see Table 3 for Gaia astrometry). Identified as TIC 368435331 (Gaia DR3 729899906357408640), HD 93963 B is $\Delta K_s = 5.21 \pm 0.02$ and $\Delta T = 7.21 \pm 0.01$ magnitudes fainter than HD 93963 A and it is separated from HD 93963 A by at least 484 AU. Based upon the measured Gaia distance and the observed magnitudes of TIC 368435331, HD 93963 B is consistent with being an M5 V star (Mamajek & Hillenbrand 2008). There are no additional companions to the primary detected within the limits of the instruments, that is, within $\Delta K \leq 3 - 4$ mag inside of $0.2''$ and within $\Delta K \leq 6$ mag outside of $0.3''$, which correspond approximately to spectral type limits of M4 V and M6 V, respectively, in these angular ranges. Any undetected companions, at the inner angles, would need to have a lower mass than these limits. This result is consistent with both stars having a Gaia DR3 renormalized unit weight error (RUWE⁸) around 1 (see Table 3), which indicates a good-quality, single-star astrometric solution for each component in the system. In the case in which the RUWE values had been higher than 1.4 we could have worried about the quality of the astrometric analysis.

5. Ground-based spectroscopy

5.1. TRES

We obtained a single reconnaissance high-resolution spectrum of HD 93963 A on 25 November 2020 using the Tillinghast Reflector Echelle Spectrograph (TRES; Fűrész 2008) mounted on the 1.5 m Tillinghast Reflector telescope at the Fred Lawrence Whipple Observatory (FLWO) atop Mount Hopkins, Arizona. TRES is a fibre-fed, optical spectrograph covering the wavelength range 390-910 nm and it has a resolving power of $R = 44\,000$. The exposure time was 195 seconds, which resulted in an S/N of 35. We extracted the spectrum as described in Buchhave et al. (2010) and we derived the stellar parameters using the Spectral Parameter Classification tool (SPC; Buchhave et al. 2012; Buchhave et al. 2014). SPC cross-correlates an observed spectrum with a grid of synthetic templates to derive stellar parameters. The grid is based on Kurucz atmospheric models (Kurucz 1993). We obtained an effective temperature of $T_{\text{eff}} = 5883 \pm 50$ K, a surface gravity of $\log g_* = 4.38 \pm 0.10$ (cgs), an iron content of $[Fe/H] = 0.02 \pm 0.08$, and a projected rotational velocity of $v \sin i_* = 5.3 \pm 0.5$ km s⁻¹.

5.2. FIES observations

We used the Fibre-fed Échelle Spectrograph (FIES; Frandsen & Lindberg 1999; Telting et al. 2014) mounted on the 2.56 m Nordic Optical Telescope (NOT) of Roque de los Muchachos Observatory (La Palma, Spain) to acquire three high-resolution ($R \approx 67\,000$) spectra of HD 93963 A over a time base of nearly

⁸ See https://gea.esac.esa.int/archive/documentation/GDR2/Gaia_archive/chap_datamodel/sec_dm_main_tables/sssec_dm_ruwe.html for more details.

15 days. The observations were carried out under good sky and seeing conditions ($\sim 1''$), as part of the observing programme 62-506 (PIs: E. Knudstrup and L. M. Serrano). We set the exposure time to 1800 s, which led to an S/N ~ 70 -100 per pixel at 550 nm. Following the same observing strategy adopted in [Gandolfi et al. \(2013, 2015\)](#), we removed cosmic ray hits by splitting each epoch observation in 3 consecutive sub-exposures of 600 s, and traced the drift of the instrument by acquiring long-exposed (~ 140 s) ThAr spectra immediately before and after each target observation. We reduced the data using standard IRAF and IDL routines and extracted the RVs via multi-order cross-correlation using the stellar spectrum with the highest S/N as a template. The three FIES RV measurements show no significant variation at a level of 10 m s^{-1} ruling out a short-period binary or giant planet scenario.

5.3. SOPHIE observations

Twenty-nine high-resolution spectra of HD 93963 A were obtained with the SOPHIE spectrograph ([Perruchot et al. 2008; Bouchy et al. 2013](#)) installed on the 1.93 m reflector telescope of Haute-Provence Observatory (France), between 17 November 2020 and 26 May 2021. The observations were collected as part of two programs devoted to radial velocity follow-up observations of transiting planet candidates (programme IDs: 20B.PNP.HEBR and 21A.PNP.HEBR; PI: G. Hébrard). On each of six nights, we secured 2 observations about two hours apart, in order to attempt a mass measurement of the 1.04 d planetary candidate. The observations were performed using the SOPHIE high-resolution mode ($R \approx 75\,000$) with simultaneous sky monitoring and an exposure time of 730 s, which led to a typical S/N = 53 per pixel at 550 nm (Table A.1). Additionally, for the characterization of the stellar host, we obtained two high S/N spectra using the SOPHIE high-efficiency mode which has a resolving power of $R \approx 40\,000$ (programme ID: 20B.PNP.HOYE; PI: S. Hoyer). The exposure was 1800 s, leading to S/N ≈ 128 and 156 per pixel at 550 nm (Table A.1).

The data were reduced using the SOPHIE data reduction pipeline ([Bouchy et al. 2009](#)). Radial velocities were measured by cross-correlating the extracted spectrum with a G2 binary mask and fitting a Gaussian function to the resulting cross-correlation function (CCF). We corrected the RVs for instrumental drifts by interpolating to the mid-time of exposure the drift estimated between two Fabry-Perot calibrations performed less than 2 hours before and after each exposure. The SOPHIE spectrograph also presents long-term variations of the zero-point ([Courcol et al. 2015](#)). To correct for this effect, we monitored RV standard stars every night, making a master time series and subtracting them from our RVs (more details may be found in [Courcol et al. 2015; Hobson et al. 2018](#)). Finally, the data were also corrected for Moon light contamination and charge transfer inefficiency. Two measurements were not taken into account in the analysis presented in Sect. 9 due to their low S/N (< 30). One measurement was obtained under bad weather conditions, whereas the other has a short exposure time, owing to a technical failure during the integration. The SOPHIE RV measurements of HD 93963 A are listed in Table A.1, along with the full width at half maximum (FWHM) and bisector inverse slope (BIS) of the CCF, and the Ca II H & K chromospheric activity indicator $\log R'_{\text{HK}}$, as extracted using the SOPHIE data reduction pipeline ([Bouchy et al. 2009](#)).

6. Stellar properties

6.1. Spectroscopic parameters

We performed the spectral analysis of HD 93963 A using the combined SOPHIE spectra, as obtained from the co-addition of the two high-efficiency mode spectra (last two lines in Table 8). The co-added spectrum has a S/N ≈ 200 per pixel at 550 nm. We derived the stellar atmospheric parameters, namely, the effective temperature T_{eff} , surface gravity $\log g_{\star}$, microturbulence velocity v_{mic} , and iron abundance [Fe/H], using the ARES+MOOG codes, following the methodology described in [Santos et al. \(2013\)](#) and [Sousa \(2014\)](#). Briefly, we first computed the equivalent widths of the iron lines with the code ARES⁹ ([Sousa et al. 2007, 2015](#)). We then applied a minimization process to find ionization and excitation equilibrium, and to converge to the best set of spectroscopic parameters. This process makes use of a grid of Kurucz's model atmospheres ([Kurucz 1993](#)) and the radiative transfer code MOOG ([Snedden 1973](#)). We obtained $T_{\text{eff}} = 5987 \pm 64 \text{ K}$, $\log g_{\star} = 4.49 \pm 0.11$ (cgs), [Fe/H] = 0.10 ± 0.04 (in agreement with the TRES results presented in Sect. 5.1), and $v_{\text{mic}} = 1.15 \pm 0.03 \text{ m s}^{-1}$. Using the same tools, we also determined the abundance of Mg ([Mg/H] = 0.08 ± 0.06) and Si ([Si/H] = 0.08 ± 0.04), closely following [Adibekyan et al. \(2012, 2015\)](#).

As a sanity check, we independently analysed the co-added FIES spectrum using the Specmatch-emp package ([Yee et al. 2017](#)), which compares the observed spectrum with a library of over 400 template spectra of stars of all types with well determined physical parameters. After formatting our co-added FIES spectrum to a compatible format ([Hirano et al. 2018](#)), a χ^2 minimization procedure provides an estimate of the following parameters: $T_{\text{eff}} = 5875 \pm 110 \text{ K}$, [Fe/H] = 0.10 ± 0.09 , and $R_{\star} = 1.10 \pm 0.18 R_{\oplus}$. These results are compatible within 1σ with the parameters retrieved with ARES/MOOG. We finally utilized the package Spectroscopy Made Easy (SME [Valenti & Piskunov 1996; Piskunov & Valenti 2017](#)) to determine the projected rotational velocity of the star $v_{\star} \sin i_{\star}$. Based on T_{eff} , $\log g_{\star}$ and [Fe/H] as derived with Specmatch-emp, v_{mic} as determined with ARES/MOOG, and $v_{\text{mac}} = 4.1 \pm 0.4 \text{ km s}^{-1}$ from the [Doyle et al. \(2014\)](#)'s empirical equation, we found $v_{\star} \sin i_{\star} = 5.9 \pm 0.8 \text{ km s}^{-1}$, in very good agreement with the TRES results (see Section 5.1).

Using the [Pecaut & Mamajek \(2013\)](#)'s calibration for main sequence stars¹⁰, we found that the effective temperature implies that HD 93963 A is a G0 dwarf star. The complete set of spectroscopic parameters adopted in the current work are listed in Table 1.

6.2. Radius

To determine the stellar radius of HD 93963 A we used a modified version of the infrared flux method (IRFM; [Blackwell & Shallis 1977](#)) in a Markov chain Monte Carlo (MCMC) approach ([Schanche et al. 2020](#)). Within the IRFM MCMC, we first constructed synthetic spectral energy distributions (SEDs) from ATLAS stellar atmospheric models ([Castelli & Kurucz 2003](#)), using the photospheric parameters and their uncertainties derived with ARES+MOOG. We derived the stellar angular diameter by fitting the observed fluxes with synthetic photometry computed by

⁹ The latest version of ARES code (ARES v2) can be downloaded at [http://www.astro.up.pt/~sim\\\$sousasag/ares](http://www.astro.up.pt/~sim\$sousasag/ares).

¹⁰ Available at https://www.pas.rochester.edu/~emamajek/EEM_dwarf_UBVIJHK_colors_Teff.txt.

convolving the ATLAS SEDs with the broadband response functions of each bandpass. The angular radius was then converted to stellar radius using the offset-corrected *Gaia* EDR3 parallax (Gaia Collaboration et al. 2021b; Lindegren et al. 2021). In this study, we retrieved the broadband fluxes and their uncertainties for HD 93963 A from the most recent data releases for the following bandpasses: *Gaia* G, G_{BP}, and G_{RP}, 2MASS J, H, and Ks, and WISE W1 and W2 (Gaia Collaboration et al. 2021b; Wright et al. 2010; Skrutskie et al. 2006). We found that HD 93963 A has a radius of $R_{\star} = 1.043 \pm 0.009 R_{\odot}$.

6.3. Rotation period

The TESS light curve of HD 93963 A shows quasi-periodic photometric variability with a peak-to-peak amplitude of $\sim 0.2\%$ (Figure 1). Given the G0 V spectral type of the star, this is likely induced by the presence of active regions (spots and plages) carried around by stellar rotation.

The Lomb-Scargle periodogram (Lomb 1976; Scargle 1982) of the TESS time series displays its most significant peak at 0.159 d^{-1} , which corresponds to a period of $\sim 6.3 \text{ d}$ (Fig. 10, upper panel). We computed its false alarm probability (FAP) following the bootstrap method described in Murdoch et al. (1993) and Hatzes (2019), and found it to be well below $\text{FAP} < 10^{-6}$. The auto-correlation function (ACF; McQuillan et al. 2013) of the TESS light curve displays its first two correlation peaks at $\sim 6.4 \text{ d}$ and $\sim 2 \times 6.4 = 12.8 \text{ d}$ (Fig. 10, lower panel). A visual inspection of the TESS light curve (Fig. 1, first panel) hints that the flux pattern repeats every $\sim 12.8 \text{ d}$, suggesting that the stellar rotation period is $P_{\text{rot}} \approx 12.8 \text{ d}$. We attribute the peak at 6.4 d to the presence of active regions at opposite longitudes on the stellar photosphere. From the peak of the ACF and its half full width at half maximum we estimated a rotation period of $P_{\text{rot}} = 12.8 \pm 1.8 \text{ d}$. Assuming that the star is seen equator on, the projected rotation velocity ($v \sin i_{\star} = 5.9 \pm 0.8 \text{ km s}^{-1}$) and the stellar radius ($R_{\star} = 1.043 \pm 0.009 R_{\odot}$) translate into a rotation period of $8.9^{+1.4}_{-1.1} \text{ d}$, which agrees with our finding within¹¹ 1.7σ .

6.4. Mass and age

By adopting T_{eff} , $[\text{Fe}/\text{H}]$, and R_{\star} as input parameters, we then determined the isochronal stellar age t_{\star} and mass M_{\star} following two different methods. The first method uses the isochrone placement technique implemented by Bonfanti et al. (2015, 2016), taking further benefit of the stellar rotation period determined from the TESS photometry $P_{\text{rot}} = 12.8 \pm 1.8 \text{ d}$ (Sect. 6.3). The knowledge of the rotation period of the star improves the convergence of the fitting procedure since it gives an additional constraint via the gyrochronological relation from Barnes (2010), as thoroughly discussed in Bonfanti et al. (2016). The isochrone placement interpolates the input parameters within pre-computed grids of stellar isochrones and tracks obtained from the PAdova & TRieste Stellar Evolutionary Code (PARSEC v1.2S, Marigo et al. 2017) to infer the stellar age and mass. The second method uses the Code Liègeois d'Évolution Stellaire (CLES, Scufflaire et al. 2008) to directly compute the evolutionary track that fits the input parameters and derive age and mass following the Levenberg-Marquardt minimization scheme (Salmon et al. 2021). After checking the consistency of the two results through a χ^2 -based criterion (see Bonfanti et al. 2021a, for further details), we finally combined our age and mass es-

timates by summing the respective probability density distributions and obtained the following median values (1σ confidence level): $t_{\star} = 1.4^{+0.8}_{-0.4} \text{ Gyr}$ and $M_{\star} = 1.109^{+0.041}_{-0.043} M_{\odot}$.

As a sanity check, we further employed the python module¹² stardate (Angus et al. 2019). The code combines the isochrone fitting within the MESA Isochrones & Stellar Tracks (MIST Dotter 2016; Choi et al. 2016) with the gyrochronological relation empirically calibrated by Angus et al. (2019) in order to infer the ages of F, G, K, and M type stars. The approach is the same as in the isochrone placement of Bonfanti et al. (2016), but the theoretical models and the gyrochronological relation are different. Here we used as input the spectroscopic parameters and the photometric band values of HD 93963 A listed in Table 1. For the parallax we adopted the value in Table 3, while for the stellar rotation we injected the period of $P_{\text{rot}} = 12.8 \pm 1.8 \text{ d}$ we estimated in Sect. 6.3. We then ran an MCMC simulation, with 100000 iterations and discarding the first 10000 as burn in, to create the posterior distributions from which we infer the best-fit parameters. We obtained $t_{\star,1} = 1.94^{+0.34}_{-0.40} \text{ Gyrs}$, which is consistent with the result obtained by combining PARSEC and CLES outcomes and suggests that the star is younger than the Sun.

While we have no reason to prefer one method over the other, we adopted the results obtained with the PARSEC and CLES stellar models. Results are listed also in Table 1.

6.5. Interstellar extinction

We determined the interstellar extinction A_v along the line of sight to the star following the procedure described in Gandolfi et al. (2008). Briefly, we fitted the spectral energy distribution of HD 93963 A using the synthetic magnitudes obtained by convolving the low-resolution BT-NextGen model spectrum (Allard et al. 2012) having the same spectroscopic parameters as the star, with the transmission functions of the magnitudes listed in Table 1. Using the Cardelli et al. (1989) extinction law and assuming a total-to-selective extinction ratio of $R_v = A_v/E(B - V) = 3.1$, we found that $A_v = 0.10 \pm 0.05$, as expected given the relatively short distance to the star ($\sim 82.5 \text{ pc}$).

6.6. Position in galaxy

We used the systemic radial velocity reported in Table 8 and the proper motion and parallax in Table 3 to determine the local standard of rest (LSR) U, V, and W space velocities of HD 93963 A following the methodologies in Johnson & Soderblom (1987). We did not subtract the Solar motion and computed the UVW values in the right-handed system. We obtained: $U = -33.03 \pm 0.04 \text{ km s}^{-1}$, $V = -21.42 \pm 0.03 \text{ km s}^{-1}$, $W = -5.06 \pm 0.03 \text{ km s}^{-1}$. Adopting the formalism presented in Reddy et al. (2006), we used these estimates to compute the probability that HD 93963 A belongs to the galactic thin disk, thick disk, or halo stellar population. Briefly, we adopted an MC approach with 100 000 samples using the velocity dispersion standards described in Chen et al. (2021), Reddy et al. (2006), Bensby et al. (2014), and Bensby et al. (2003), and estimated the probability of the star belonging to a certain kinematic galactic family as a weighted average. We obtained that HD 93963 A has a 98.7% probability of belonging to the thin disk, while it is highly unlikely that it is part of the thick disk (1.3%) or of the halo ($\sim 0\%$). We additionally used the *Gaia* EDR3 position, proper motion, parallax, and the stellar radial velocity to compute the galactic orbit with the package galpy (integrating over

¹¹ Here σ has been obtained by quadratically adding 1.4 and 1.8 d.

¹² Available at <https://github.com/RuthAngus/stardate>.

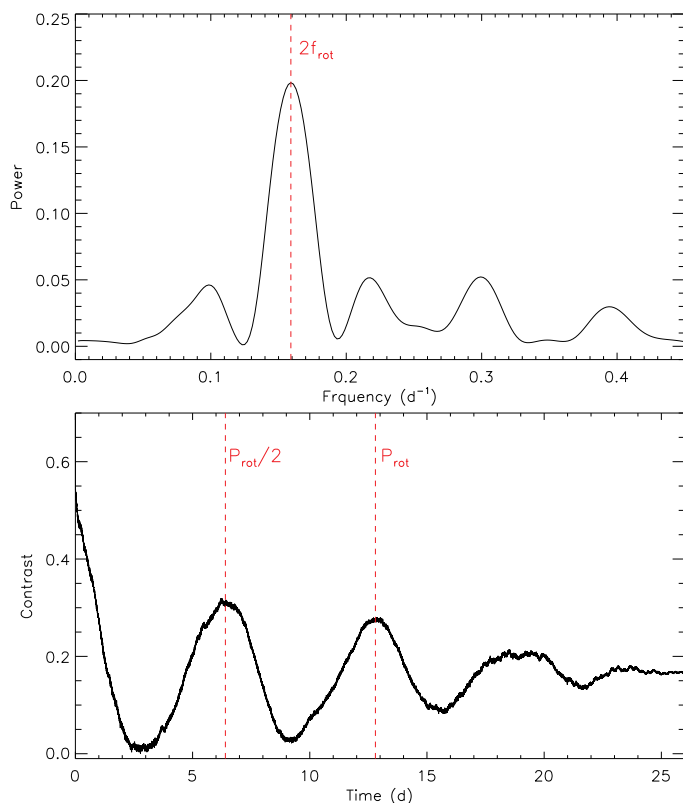


Fig. 10. Study of the HD 93963A rotational period using TESS data. *Upper panel.* Lomb-Scargle periodogram of HD 93963 A light curves. The red dashed line marks the first harmonic of the rotation frequency of the star. *Lower panel:* Autocorrelation function of the TESS light curve. The red dashed lines mark the rotation period of the star and its first harmonic.

5 Gyrs, Bovy 2015), from which we retrieved a galactic eccentricity of 0.09 and a high galactic Z-component of the specific relative angular momentum of $\sim 1686 \text{ kpc km s}^{-1}$. These results, together with our derived [Fe/H], well support the kinematic membership of the star to the galactic thin disk.

7. Joint analysis of the TESS and CHEOPS transit light curves

We performed a joint analysis of the detrended TESS and CHEOPS light curves (Sects. 2.2 and 3.2). We excluded the LCOGT data due to their poor quality when compared to the space-based TESS and CHEOPS photometry. For the joint fit, we used the software suite `pyaneti` (Barragán et al. 2019, 2021), which couples a Bayesian framework with an MCMC sampling to produce posterior distributions of the fitted parameters. `pyaneti` uses the quadratic limb-darkening transit model of Mandel & Agol (2002) following the q_1 and q_2 parametrization proposed by Kipping (2013). We set Gaussian priors on q_1 and q_2 using the limb darkening coefficients derived by Claret (2017) and Claret (2021) for the TESS and CHEOPS passbands, respectively. We imposed a conservative standard deviation of 0.1 on both the linear and quadratic terms. We sampled for the mean stellar density ρ_\star and recovered the scaled semi-major axis for each planet (a/R_\star) using Kepler’s third law (Winn 2010). In detail, we imposed a Gaussian prior on ρ_\star using the stellar mass and radius derived in Sect. 6. We adopted wide uninformative uniform priors for the remaining transit parameters (see Table 4),

Table 4. Priors used in the joint analysis of the TESS and CHEOPS transit light curves.

Parameter	Prior
Model Parameters for HD 93963 A b	
Orbital period P_b (days)	$\mathcal{U}[1.0390, 1.0392]$
Transit epoch T_{0b} (BJD - 2457000)	$\mathcal{U}[1901.2277, 1901.3277]$
Scaled planetary radius R_b/R_\star	$\mathcal{U}[0, 0.03]$
Impact parameter, b	$\mathcal{U}[0, 1]$
Model Parameters for HD 93963 A c	
Orbital period P_c (days)	$\mathcal{U}[3.6441, 3.6461]$
Transit epoch T_{0c} (BJD - 2457000)	$\mathcal{U}[1902.7740, 1902.9740]$
Scaled planetary radius R_c/R_\star	$\mathcal{U}[0, 0.035]$
Impact parameter, b_c	$\mathcal{U}[0, 1]$
Other system parameters	
Stellar density, ρ_\star	$\mathcal{N}[1.380, 0.064]$
Limb darkening coefficient q_1 TESS	$\mathcal{N}[0.3100, 0.1000]$
Limb darkening coefficient q_2 TESS	$\mathcal{N}[0.2500, 0.1000]$
Limb darkening coefficient q_1 CHEOPS	$\mathcal{N}[0.4200, 0.1000]$
Limb darkening coefficient q_2 CHEOPS	$\mathcal{N}[0.2900, 0.1000]$

with the exception of the eccentricity and the argument of periastron, which were fixed to zero and 90° , respectively.

We explored the parameter space with 500 chains and checked for convergence using the Gelman-Rubin statistics (Gelman & Rubin 1992). Once the chains converged, we used the last 500 iterations and saved the chain states every 10 iterations, generating a posterior distribution of 250 000 points for each fitted parameter. The inferred transit parameters and their uncertainties are defined as the median and the 68 % region of the credible interval of the corresponding posterior distributions (Table 5). The transit depths of $141.5^{+8.5}_{-8.3}$ ppm and $805.2^{+25.5}_{-25.5}$ ppm of the 1.04 d and 3.65 d signal imply planetary radii of $R_b = 1.35 \pm 0.042 R_\oplus$ (3% precision) and $R_c = 3.228 \pm 0.059 R_\oplus$ (1.7% precision), respectively.

We checked whether the TESS and CHEOPS light curves provide consistent transit depths repeating the procedure described above, but independently modelling the transit depths within the two data-sets. Results of this sanity check are reported in Table 6. For the 3.65 d candidate TESS gives a transit depth of $D_c = 812.51 \pm 33.01$ ppm, while the one measured by CHEOPS is 798.5 ± 32.3 ppm. For the 1.04 d candidate we found that TESS gives a transit depth of $D_b = 131.5 \pm 16.2$ ppm, while CHEOPS provides $144.37^{+9.6}_{-9.5}$ ppm. For both signals, the transit depths measured with the two instruments are consistent within 1σ . The CHEOPS bandpass is a broad optical bandpass very similar to that of the *Gaia* Gmag, providing coverage at wavelengths bluer than the red-optical TESS one. Given the different passbands, this provides evidence that the transits are achromatic, unrelated to instrumental effects.

We also tested whether the stellar density would significantly change with respect to the spectroscopic value when adopting uniform priors between 0 and 1 on the limb darkening coefficients and between 0 and 6 g cm^{-3} on the stellar density. This test gave a stellar density of $1.42^{+0.15}_{-0.29} \text{ g cm}^{-3}$ consistent with the spectroscopic density $1.379 \pm 0.065 \text{ g cm}^{-3}$, as well as planetary parameters compatible within 1σ with those reported in Table 5. This implies that the stellar density is also well constrained by the transit light curves.

Table 5. HD 93963 A system parameters.

Parameters	Values from TESS+CHEOPS joint fit
Model parameters for HD 93963 A b	
Orbital period P_b (days)	$1.0391353^{+0.0000049}_{-0.0000045}$
Transit epoch T_{0b} (BJD - 2457000)	1901.2774 ± 0.0016
Planet-to-star radius ratio R_b/R_\star	0.01190 ± 0.00036
Impact parameter b	$0.284^{+0.081}_{-0.126}$
Scaled semi-major axis a_b/R_\star	4.299 ± 0.067
Model parameters for HD 93963 A c	
Orbital period P_c (days)	$3.6451398^{+0.0000106}_{-0.0000142}$
Transit epoch T_{0c} (BJD - 2457000)	$1902.87274^{+0.00100}_{-0.00095}$
Planet-to-star radius ratio R_c/R_\star	0.02838 ± 0.00045
Impact parameter b_c	0.640 ± 0.026
Scaled semi-major axis, a_c/R_\star	9.92 ± 0.15
Other system parameters	
Limb darkening coefficient $q_{1,TESS}$	0.30 ± 0.09
Limb darkening coefficient $q_{2,TESS}$	0.24 ± 0.10
Limb darkening coefficient $q_{1,CHEOPS}$	0.52 ± 0.09
Limb darkening coefficient $q_{2,CHEOPS}$	0.32 ± 0.10
Jitter term σ_{TESS}	0.0005461 ± 0.0000032
Jitter term σ_{CHEOPS}	0.0002106 ± 0.0000024
Derived parameters for HD 93963 A b	
Planetary radius R_b (R_\oplus)	1.35 ± 0.042
Semi-major axis a_b (AU)	0.02085 ± 0.00037
Orbital inclination i_b (deg)	$86.21^{+1.69}_{-1.14}$
Transit duration W_b (hours)	1.812 ± 0.040
Transit depth D_b (ppm)	$141.5^{+8.5}_{-8.3}$
Equilibrium temperature $T_{eq,b}$ (K)	2042 ± 27
Insolation $F_{p,b}$ (F_\oplus)	$2898.0^{+157.0}_{-147.0}$
Derived parameters for HD 93963 A c	
Planetary radius R_c (R_\oplus)	3.228 ± 0.059
Semi-major axis a_c (AU)	0.04813 ± 0.00085
Orbital inclination i_c (deg)	86.31 ± 0.19
Transit duration W_c (hours)	$2.268^{+0.045}_{-0.042}$
Transit depth D_c (ppm)	$805.2^{+25.5}_{-25.5}$
Equilibrium temperature $T_{eq,c}$ (K)	1344 ± 18
Insolation $F_{p,c}$ (F_\oplus)	$543.8^{+29.4}_{-27.6}$
Other derived parameters	
Limb darkening coefficient $u_{1,TESS}$	0.25 ± 0.11
Limb darkening coefficient $u_{2,TESS}$	0.28 ± 0.12
Limb darkening coefficient $u_{1,CHEOPS}$	0.46 ± 0.14
Limb darkening coefficient $u_{2,CHEOPS}$	0.26 ± 0.14

Table 6. Scaled planetary radii, estimated planetary radii and transit depths retrieved from the photometric joint fit that accounts for the difference in pass-bands between TESS and CHEOPS.

Parameter	TESS	CHEOPS
Scaled radius R_b/R_\star	$0.01147^{+0.00068}_{-0.00071}$	0.01202 ± 0.00040
Scaled radius R_c/R_\star	0.02850 ± 0.00057	0.02826 ± 0.00056
Radius R_b (R_\oplus)	$1.304^{+0.079}_{-0.082}$	1.366 ± 0.047
Radius R_c (R_\oplus)	3.243 ± 0.071	3.21 ± 0.070
Transit depth D_b (ppm)	131.5 ± 16.2	$144.37^{+9.6}_{-9.5}$
Transit depth D_c (ppm)	812.51 ± 33.01	798.5 ± 32.3

8. Validation of the two transiting planets

HD 93963 A hosts two non-grazing transiting planet candidates with periods of 3.65 d (TOI) and 1.04 d (non-TOI). The validation of the system requires ruling out the following possible false positive scenarios (see, e.g. Daylan et al. 2021; Wilson et al. 2022). The first possibility is that the transit-like events (hereafter transits in this section) might be the result of instrumental effects. The second suggests that the host star is an eclipsing binary, whose eclipses are being misinterpreted as transit features. The third scenario is that the transits might be caused by planets or stars orbiting HD 93963 B whose light leaks into the photometric mask of HD 93963 A. Finally there is a risk that planets or stars might be orbiting a background or foreground star whose light leaks into the photometric mask of HD 93963 A, generating a transit like feature.

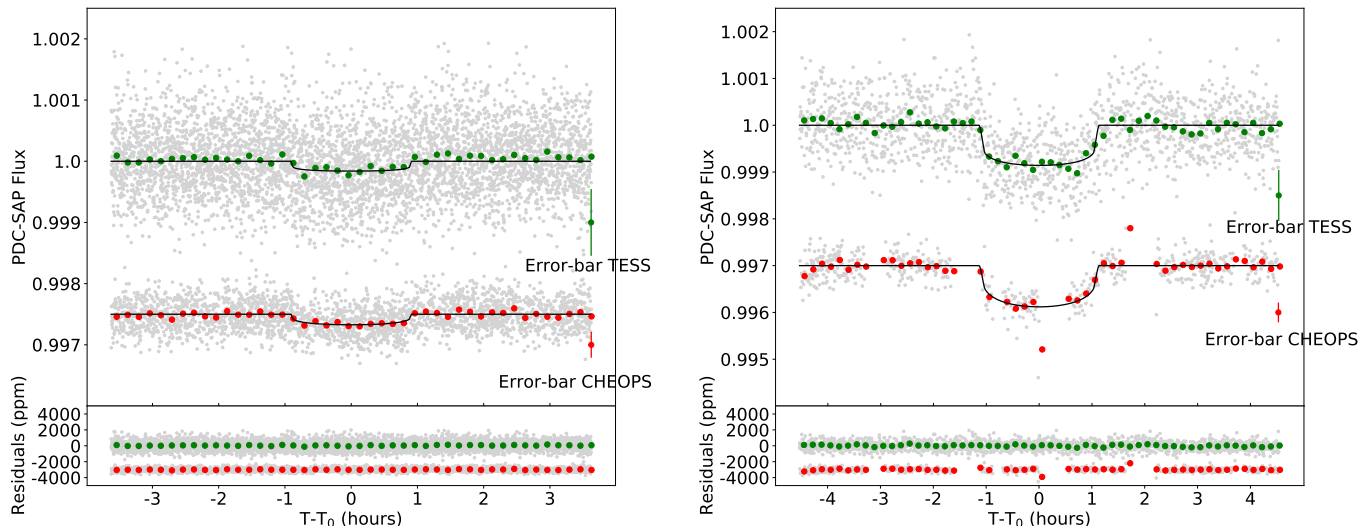


Fig. 11. Phase-folded light curve of planets HD 93963 A b (left panel), and c (right panel). *Upper panels:* photometric measurements are shown with light grey circles, along with the 10-minute binned data (green circles for TESS, and red for CHEOPS), and the best-fitting transit model (solid black line). On the right-hand side of the plot, we also show the size of TESS and CHEOPS error-bars, respectively in green and red. *Lower panels:* residuals, colour-coded as above.

We can exclude that the transits are due to systematics because they have been detected by two instruments (TESS and CHEOPS) with the same periods and durations. Moreover, both signals are achromatic, with TESS and CHEOPS transit depths being compatible well within 1σ (Sect. 7), as expected from bona fide transiting planets. The measured stellar density, as derived from the modelling of the transit signal, is consistent with the spectroscopic density (Sect. 7), and the impact parameters and scaled semi-major axes imply that the orbits of the two planets are co-planar ($i_b = 86.21^{+1.69}_{-1.14}$ deg and $i_c = 86.31 \pm 0.19$ deg; Table 5), providing additional evidence that the two series of transit-like dips are actually transits of HD 93963 A.

8.1. Contaminants in the CHEOPS field of view

An analysis of the CHEOPS FoV indicates that the level of contamination is low. Figure 12 shows the DRP simulated image of the FoV of HD 93963 A, with the red circles marking the potential sources of contamination. Given the high galactic latitude of the star ($\sim 63^\circ$), the number of contaminants is relatively small. Within the CHEOPS FoV there are 6 known *Gaia* sources brighter than *Gaia* G-band magnitude 19.5 (Table 3), with only 2 contaminants being inside the photometric aperture. Four out of the 6 contaminants are too faint ($G > 17.5$) and too separated from HD 93963 A to be the source of the transit signals (see below). The closest contaminant, marked as 1 in Fig. 12, is the companion HD 93963 B (see Sect. 4.4). In the following section, we show that the transit signals cannot happen on the companion HD 93963 B. The star marked with 2 in Fig. 12, is DR3 729899902062379776, a $G = 17.5$ star located $16.8''$ away from HD 93963 A. This is the only contaminant potentially capable of generating a false positive detection.

A contaminant can affect the light curve in two ways: firstly, flux from the contaminant dilutes any transit signal. Secondly, if the contaminant is an eclipsing binary (EB), it can generate a false transit detection. The dilution is already strongly miti-

gated, because PIPE removes contributions due to contaminants by subtracting a synthetic image produced using the PSF and parameters from the EDR3 catalogue for the contaminant stars. This correction does not account for variability, so an EB may still induce a transit signal. The contribution of a detectable contaminant star (within $0.5''$) to the PSF photometry of the target is different from the case of aperture photometry, depending on the target-contaminant separation. We can therefore do an a priori test of false positive detections for the two transits, by comparing the variability in the photometry extracted with the two methods; if the transit signal comes from the target, both methods should give consistent transit depths.

To quantify the effects of contamination on PSF and aperture photometry, we used an empirical CHEOPS PSF and computed the effects of contamination for all position angles in steps of 5 degrees. We included the angular dependence because the CHEOPS PSF is strongly asymmetric, so the contamination depends on the orientation of the PSF with respect to the contaminant. In Fig. 13 we plot the contamination fraction, which is the fraction of flux that affects the flux estimate, as a function of separation for the two photometric extraction methods and the full range of position angles. In the DRP, the assumed aperture has the default radius 25 pixels. Since the PSF drops steeply at larger radii, the dependence on its defined radius is insignificant as long as it is greater than the contaminant separation.

From the plot, we see that the contamination fraction for the two extraction methods have different dependencies on separation, but that the contamination in PSF extraction is typically a few times lower than in aperture extraction. Among the sources listed in Table 3, we confirm that the strongest contaminant is DR3 729899902062379776. At this separation, the contamination in the extracted PIPE photometry should be about 40% weaker than in the DRP photometry. A comparison of the extracted photometry from PIPE and the DRP shows about a 3% difference for both planets, consistent within the estimated measurement uncertainty of 7% and 4% for the 1.04 d and 3.65 d signals, respectively. This confirms that the transits are unlikely

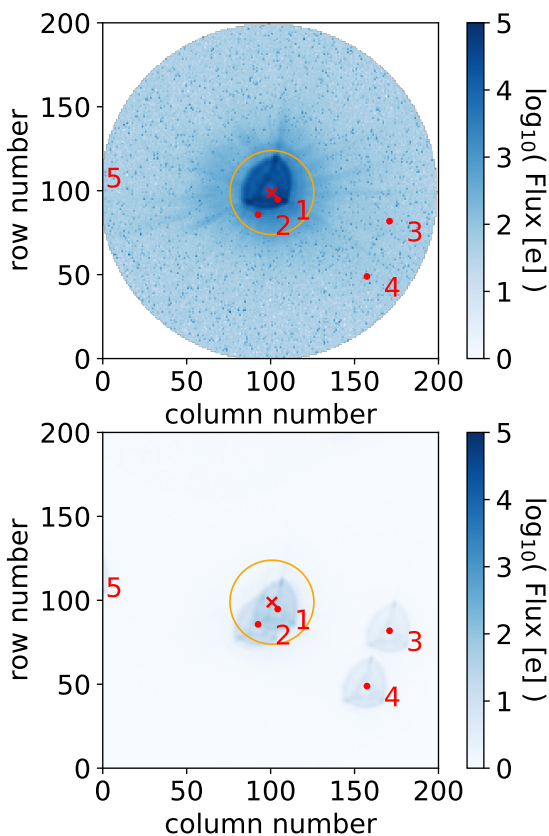


Fig. 12. CHEOPS images of HD 93963 FoV. *Upper panel:* An example of a CHEOPS subarray science image (from visit CH_PR110045_TG002001_V0200). *Lower panel:* DRP simulated FoV only with the background stars (therefore with the target removed), used to estimate the contamination level induced by these stars in the photometric aperture. *Both panels:* The orange circle represents the DEFAULT photometric aperture and the red numbered dots indicate the location of nearby stars. Due to the large difference in brightness, the background stars are barely detected in the CHEOPS science images.

to be due to the contaminating star. For the 3.65 d signal, this can also be inferred from the fact that the observed transit depth of 805 ppm is stronger than the signal even a 100% occulting EB would induce, which would be 690 ppm in an R25 aperture and 480 ppm for the PSF extraction.

An additional confirmation that the 1.04 d candidate is not a false positive has been provided by the photometric in-transit observations carried out with MuSCAT 2 (Sect. 4.2). Although the transit is too shallow to be detected from the ground, the analysis of the light curve of the contaminant star DR3 729899902062379776 rules out a false positive detection due to a contaminating eclipsing binary scenario. Finally, the LCOGT observations showed that the transit of the 3.65 d period planet happens on HD 93963 A, therefore excluding the signal is a false positive caused by NEBs.

8.2. No transits on HD 93963 B

HD 93963 A has a gravitationally bound stellar companion at $\sim 5.9''$ south-east (Sect. 4.4). We now want to understand whether the planets transit the bright component, HD 93963 A, or the faint companion, HD 93963 B. As mentioned in Section 4.4, HD 93963 B is an M5 V type star, that is a star with

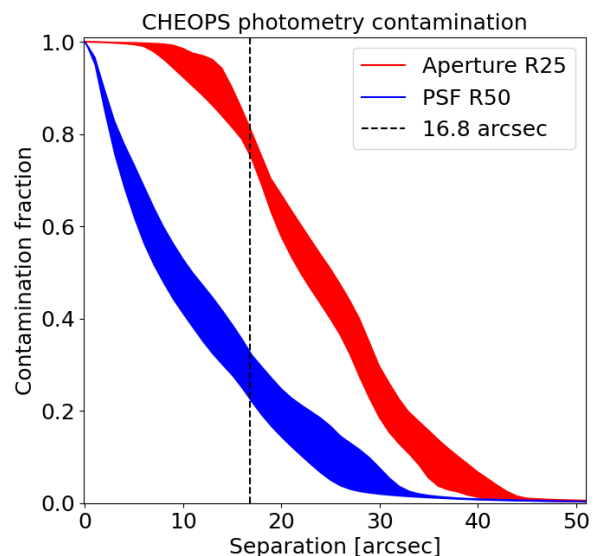


Fig. 13. The fraction of flux of a contaminant that affects the photometry for aperture and PSF photometry as a function of separation. The width of the lines reflect the angular dependence due to the asymmetry of the CHEOPS PSF. R25 and R50 indicate the aperture radii expressed in pixels. The dashed vertical line at $16.8''$ corresponds to the separation of the most significant potential contaminant.

$T_{\text{eff,B}} \approx 3060$ K, $M_{\star,B} \approx 0.162M_{\odot}$, and $R_{\star,B} \approx 0.196R_{\odot}$ (Mama-jek & Hillenbrand 2008).

If HD 93963 B were totally occulted by an inflated gas giant planet or a second M-dwarf, the diluted depth (estimated taking into account the difference of 7.9 between the G-band magnitudes of HD 93963 A and HD 93963 B) would be ~ 700 ppm, which is too shallow to account for the $805.2^{+25.5}_{-25.5}$ ppm depth of the transit signal of planet c. For a 3.65-d orbit, the transit duration would be ~ 1.2 h for a Jupiter mass companion and shorter for a stellar companion, in disagreement with the observed duration of $2.268^{+0.045}_{-0.042}$ hours. If HD 93963 B were totally occulted by an orbiting companion having the same size as the star, the transit would be v-shaped, while the TESS and CHEOPS transits are u-shaped.

However, the depth of the 1.04 d transit signal ($141.5^{+8.5}_{-8.3}$ ppm) could be explained by an object transiting HD 93963 B. Based on its predicted radius of $0.196R_{\odot}$, only a Jupiter-size object with a radius of $\sim 0.09R_{\odot}$ would be able to account for the detected transit depth. Yet, given the stellar radius and the scaled semi-major axis $a_b/R_B \approx 12$, the transit duration would be ~ 0.9 h, which is significantly shorter than the measured duration of 1.812 ± 0.040 hours. A highly-eccentric orbit could still give a longer transit duration if the transit occurred at the apocentre. On the other hand, with a period of just 1 d it is highly unlikely that the orbit is eccentric.

We conclude that the two series of transit signals do not happen on HD 93963 B given their shapes, depths, and durations. This is also corroborated by the fact that the stellar density derived from the modelling of the transit light curves is consistent with the spectroscopic density of HD 93963 A (Sect. 7).

8.3. Ruling out false positive scenarios

We used the Tool for Rating Interesting Candidate Exoplanets and Reliability Analysis of Transits Originating from Proximate Stars (TRICERATOPS; Giacalone et al. 2021) to further verify

that the transits are not due to contaminating eclipsing binaries. TRICERATOPS is a Bayesian tool that uses the phase-folded primary transit, any pre-existing knowledge about the stellar host and contaminants, and the understanding of planet occurrence and stellar multiplicity. For each planet, the code requires the photometric phase-folded light curve (with phase equal to zero corresponding to the transit centre), the target TESS input catalogue ID and the TESS sector in which the target was observed. The code refers to the MAST database to recover the list of stars within 10 pixels (each pixel corresponds to 21'') from the target. TRICERATOPS uses these inputs to calculate the contribution of nearby stars to the observed flux, and identifies those that are bright enough to produce the observed transit. The accounted for scenarios of false positive detections are the following: an unresolved bound companion with a planet transiting the secondary star, an unresolved foreground or background star hosting a planet, a foreground or background eclipsing binary, a transit on a nearby star, and a nearby eclipsing binary (NEB). The code uses a Bayesian framework to estimate the probability associated with each scenario, by fitting transit and eclipsing binary models accounting for the input orbital period and twice the period.

We ran TRICERATOPS for both candidates. The pipeline identified a total of 23 stars within 10'' from the target star, although only 2 nearby stars were considered to be potential NEBs: the gravitationally bound stellar companion DR3 729899906357408640, and the star DR3 729899902062379776. For DR3 729899906357408640, the stellar companion, we assumed the typical mass and radius of an M5 dwarf (according to Mamajek & Hillenbrand 2008), while for DR3 729899902062379776 we had no specific assumption (specifying the spectral type does not affect the results of the analysis). We first injected phase-folded TESS data, using for T_0 and P the values listed in Table 5. We then ran TRICERATOPS on the combination of the TESS and the CHEOPS light curves also using the values of T_0 and P listed in Table 5. For both candidates we found that the signals are very likely associated with planets transiting HD 93963 A. We obtained a false positive probability of FPP ~ 0.009 and a negligible nearby false positive probability (NFPP) for the 3.65 d planet, which is therefore validated according to the TRICERATOPS criteria (FPP < 0.015 and NFPP < 0.001 for a planet to be validated). This result represents a notable improvement with respect to that obtained by Giacalone et al. (2021). Giacalone et al. (2021) ran this analysis only on the TESS data, obtaining an FPP ~ 0.3 , according to which the candidate is not validated, but must be classified as ‘‘likely a planet’’. In the case of the 1.04 d transit signal, the code provides an FPP ~ 0.09 and an NFPP ~ 0.006 . Based on the TRICERATOPS criteria this test tells us that this object is ‘‘likely a planet’’ but there is a low probability of false positives due to binaries. Since planet c is already confirmed, folding in the FPP of planet c to the validation analysis of planet b would likely decrease the FPP of planet b. Furthermore, based on multiplicity statistics determined from *Kepler* discoveries (Lissauer et al. 2012), it is highly likely that an additional transit signal in a system with a validated planet is also planetary in nature. We therefore conclude that both planets are validated.

9. Radial velocity analysis

We performed a frequency analysis of the SOPHIE RV measurements and activity indicators to search for the Doppler reflex motions induced by HD 93963 A b and c, and unveil the presence of possible additional RV signals arising from other orbiting plan-

ets and-or stellar activity. We estimate the expected masses of the two planets using the empirical mass-radius relations reported in Otegi et al. (2020). With a radius of $\sim 1.3 R_{\oplus}$, HD 93963 A b is very likely a rocky planet with an expected planetary mass of $M_b \approx 2.4 M_{\oplus}$ and an induced Doppler semi-amplitude of $K_b \approx 1.6 \text{ m s}^{-1}$. With a radius of $\sim 3.2 R_{\oplus}$, HD 93963 A c might be a volatile-rich sub-Neptune ($\rho_c < 3.3 \text{ g cm}^{-3}$), or a highly dense ($\rho_c > 3.3 \text{ g cm}^{-3}$) planet rich in iron, silicates and water, with a thin gaseous envelope accounting for no more than a few per cent of the total mass, similarly to TOI-849 b (Armstrong et al. 2020). Therefore, its mass may range from $M_c \approx 10$ to $50 M_{\oplus}$, while the predicted radial velocity semi-amplitude ranges from $K_c \approx 5$ to 23 m s^{-1} . Given the median uncertainty of the SOPHIE RV measurements (3 m s^{-1} ; Table A.1), we should be able to detect the Doppler reflex motion induced by HD 93963 A c.

HD 93963 A is a magnetically active solar-like star with a mean Ca II H & K chromospheric activity indicator of $\log R'_{\text{HK}} = -4.63 \pm 0.05$, as derived from the SOPHIE spectra (Table A.1), and a peak-to-peak photometric variability of $\sim 0.2\%$, as measured by TESS. It is well known that the presence of magnetically active regions (spots and plages) coupled to stellar rotation can induce periodic and quasi-periodic Doppler signals at the stellar rotation frequency and its harmonics. Using the code SOAP2 (Dumusque et al. 2014), we estimated the RV semi-amplitude of the activity-induced signal – the so-called activity-induced RV jitter – from the effective temperature, radius, rotation period, and photometric variability of the star. We found that the predicted semi-amplitude of the RV jitter is $\sim 5\text{--}10 \text{ m s}^{-1}$. Given the precision of the SOPHIE measurements, the stellar signal is also expected to be detected in our Doppler data.

The upper left and right panels of Figure 14 display the generalized Lomb-Scargle periodogram (Zechmeister & Kürster 2009) of the SOPHIE RV measurements for two different frequency ranges encompassing the orbital frequencies of the two planets ($f_b = 0.96 \text{ d}^{-1}$ and $f_c = 0.27 \text{ d}^{-1}$; vertical dashed red lines). The yellow region marks the 68.3% (1σ) credible interval of the rotation frequency of the star, as estimated from the TESS light curve (Sect 6.3). The horizontal dashed red line marks the false alarm probability (FAP) of 0.1%, which was estimated using the bootstrap method described in Murdoch et al. (1993) and Hatzes (2019). The periodogram of the SOPHIE RVs shows no significant peak (FAP $< 0.1\%$)¹³ and weak powers at f_b and f_c . The null detection of the RV signal induced by planet c might be a consequence of the relatively small number of measurements (27), aliasing effects due to the sparse sampling of our SOPHIE RVs, and the presence of additional, non-accounted for Doppler signals in the data. We note that the periodogram of the SOPHIE RVs shows a peak at 0.09 d^{-1} ($\sim 11 \text{ d}$), which falls within the 68.3% credible interval of the rotation frequency of the star, and that might arise from stellar activity (vertical dashed blue line). This is corroborated by the fact that the 0.09 d^{-1} peak seems to have a possible counterpart in the periodogram of the FWHM of the cross-correlation function (CCF), as well as in the periodograms of $\log R'_{\text{HK}}$ and $H\alpha$ (Fig. 14).

As HD 93963 A b and c are two bona fide, validated planets (see Sect. 8) and the Doppler reflex motion of planet c should be detectable with SOPHIE, we modelled our RV measurements with two Keplerians using the code `pyanet.i`. We adopted Gaussian priors for the orbital periods and the times of mid-transit, as derived from the joint analysis of the TESS and CHEOPS light curves presented in Sect. 7, and uniform uninformative priors for the K-amplitudes and systemic velocity. We assumed circu-

¹³ We adopted a FAP $< 0.1\%$ for a signal to be significant.

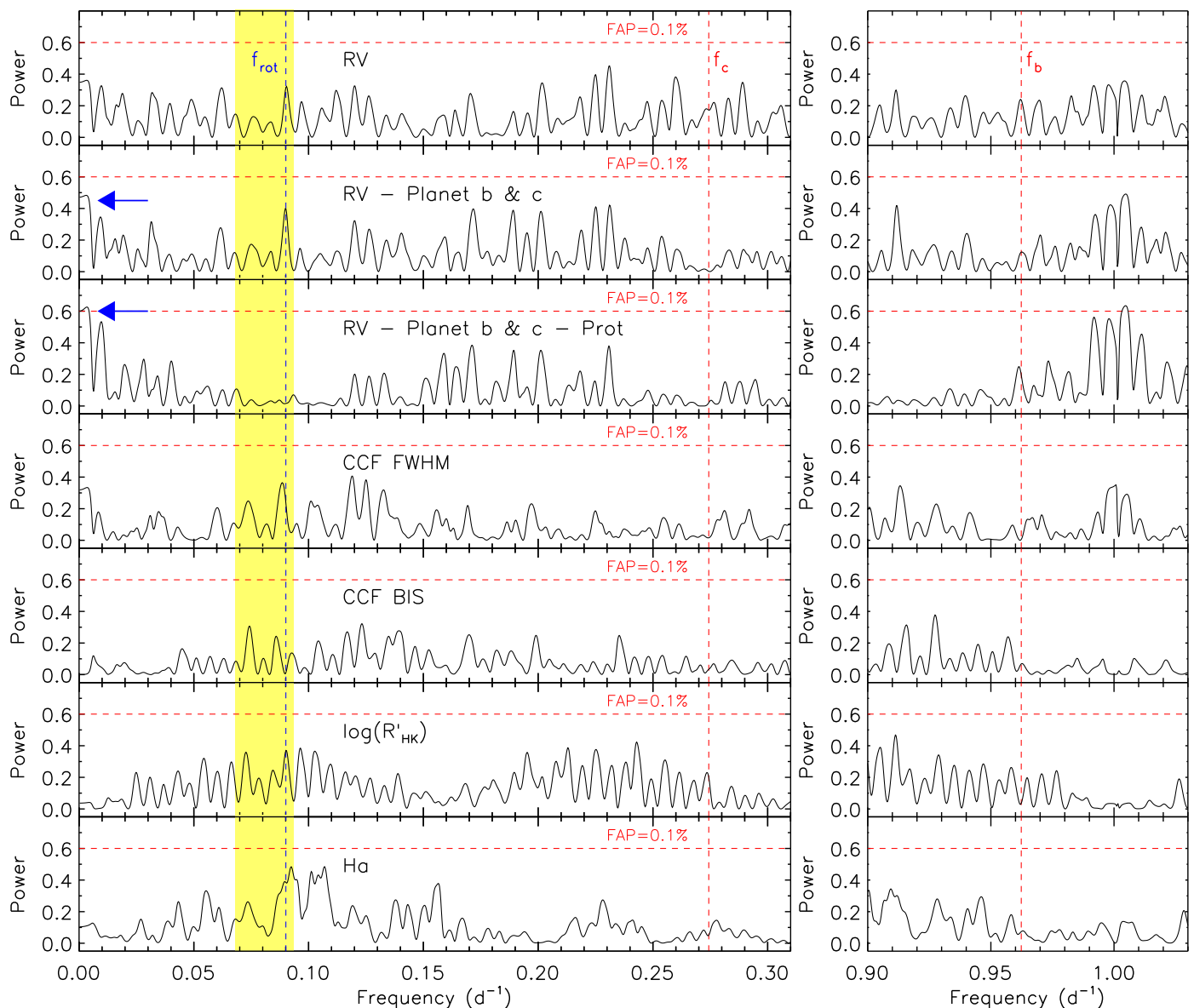


Fig. 14. Generalized Lomb-Scargle periodograms of the SOPHIE RV measurements and activity indicators. The right and left columns cover two frequency ranges encompassing the orbital frequencies of HD 93963 A b and c ($f_b = 0.96 \text{ d}^{-1}$ and $f_c = 0.27 \text{ d}^{-1}$; vertical dashed red lines) and the 68.3% credible interval of the rotation frequency of the star (yellow area), as estimated from the TESS light curve. The vertical dashed blue line marks the rotation frequency of the star ($f_{\text{rot}} = 0.09 \text{ d}^{-1}$, which implies $P_{\text{rot}} \sim 11.1 \text{ d}$), as derived from the SOPHIE data. From top to bottom: RV data; RV residuals after subtracting the signals of the two transiting planets; RV residuals after subtracting the signals of the star and of the two transiting planets; FWHM and BIS of the CCF; $\log(R'_{\text{HK}})$; $\text{H}\alpha$. The horizontal dashed red lines mark the 0.1% false alarm probability. The blue arrow marks the excess of power at low frequencies detected in the SOPHIE RVs.

Table 7. Bayesian information criterion (BIC) and jitter term of the three different models considered for our RV-only analysis.

Model	Jitter term (m s^{-1})	BIC
two planets	$11.5^{+2.1}_{-1.6}$	-140.4
two planets + stellar rotation	$9.4^{+2.0}_{-1.5}$	-144.2
two planets + stellar rotation + linear trend	$4.8^{+1.3}_{-1.0}$	-171.4

lar orbits and added an “RV jitter term” to account for noise not included in the nominal uncertainties. While HD 93963 A b and c remain undetected (1σ and 2.4σ level, respectively), we found a high RV jitter term of $\sim 11.5 \text{ m s}^{-1}$ (Table 7), which is ~ 4 times

the median uncertainty of our measurements, suggesting that additional Doppler signals might be present in the data.

The panels in the second row of Fig. 14 display the periodogram of the RV residuals. Although we found no peak with $\text{FAP} < 0.1\%$, there are two important points to note. First, there seems to be an excess of power at frequencies lower than 0.006 d^{-1} , the spectral resolution of our SOPHIE data¹⁴, suggesting the presence of a long-term trend (blue arrow in Fig. 14). Second, the significance of the stellar signal at 0.09 d^{-1} has increased. We thus proceeded by modelling the activity-induced RV variation at the star’s rotation period adding a coherent sine-like curve whose period was constrained with a uniform prior centred at $P_{\text{rot}} = 12.8 \text{ d}$, and having a width of 4 d. For the phase

¹⁴ Defined as the inverse of the time base of our observations ($\sim 180 \text{ d}$).

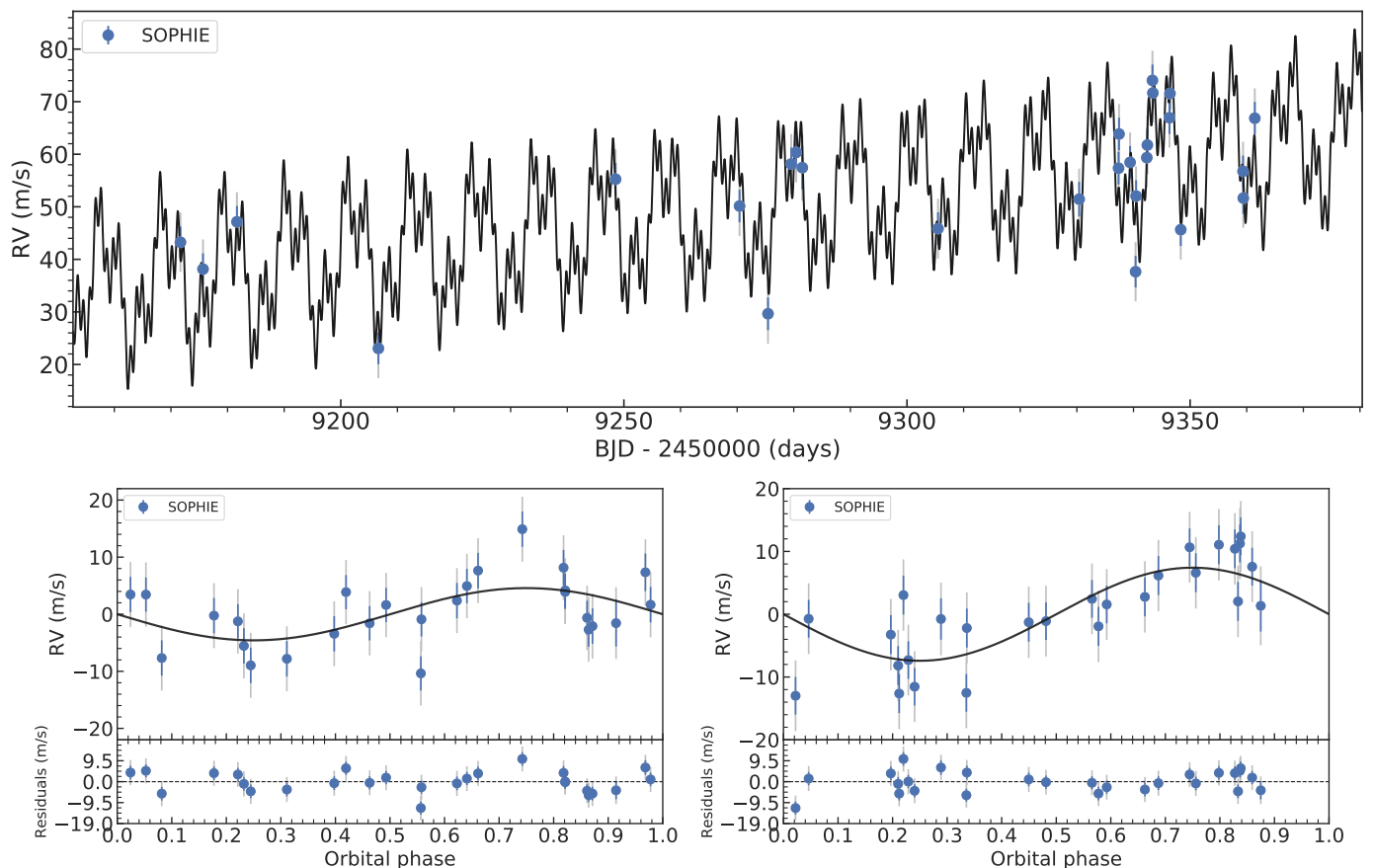


Fig. 15. *Upper panel:* SOPHIE RV time series and best fitting model. *Lower panels:* phase-folded RV curve of HD 93963 A b (left), HD 93963 A c (right) and best-fitting Keplerian model. The vertical grey lines mark the error bars including the RV jitter

Table 8. Best fitting parameters and planetary masses as derived from the analysis of the SOPHIE RV measurements.

Parameters	Values
Parameters of HD 93963 A b	
K_b (m s^{-1})	4.6 ± 1.9
M_b (M_{\oplus})	7.8 ± 3.2
Parameters of HD 93963 A c	
K_c (m s^{-1})	7.4 ± 1.6
M_c (M_{\oplus})	19.2 ± 4.1
Model parameters of activity induced signal	
P_{rot} (days)	$11.02^{+0.05}_{-0.08}$
k_{\star} (m s^{-1})	10.4 ± 2.1
Other system parameters	
Linear trend ($\text{m s}^{-1} \text{d}^{-1}$)	$0.134^{+0.024}_{-0.022}$
RV jitter term (m s^{-1})	$4.78^{+1.26}_{-1.04}$
Systemic velocity (km s^{-1})	$13.225^{+0.009}_{-0.010}$

and semi-amplitude of the activity signal we adopted uniform priors. While we acknowledge that this simple model might not fully reproduce the quasi-periodic variations induced by evolving active regions, it has proven to be effective in accounting for the stellar signal of active and moderately active stars (see, e.g. Hatzes et al. 2010; Barragàn et al. 2018; Gandolfi et al. 2017, 2019).

The panels in the third row of Fig. 14 show the periodogram of the RV residuals following the subtraction of the signals arising

from two planets and the star. With an FAP $< 0.1\%$, we found that the excess of power at low frequencies has become significant (blue arrow in Fig. 14). We therefore added a linear trend to the last RV model, which includes two Keplerians plus one sine curve, and refitted the SOPHIE data with `pyaneti`. Based on the Bayesian information criterion (BIC) and the jitter term, we found that the model with the linear trend is preferred over the other two previous models (Table 7).

Figure 15 shows the SOPHIE RV time series and the phase-folded RV curves of HD 93963 A b and c, along with the best fitting models. The inferred parameters are given in Table 8. With an RV semi-amplitude variation of $K_c = 7.4 \pm 1.6 \text{ m s}^{-1}$, HD 93963 A c is significantly detected in the SOPHIE measurements (4.6σ), while HD 93963 A b is not significantly detected in our data ($K_b = 4.6 \pm 1.9 \text{ m s}^{-1}$; 2.6σ). The stellar RV signal has an amplitude of $10.4 \pm 2.1 \text{ m s}^{-1}$, as predicted by SOAP2. We also found evidence of the presence of a linear trend in the data with an acceleration of $0.13 \pm 0.02 \text{ m s}^{-1} \text{d}^{-1}$. Although the periodogram of the FWHM shows an excess of power at low frequencies, the corresponding peak is not significant to claim that this signal arises from stellar activity. The source and periodicity are hard to pinpoint given the ~ 180 -d baseline of our radial-velocity campaign with SOPHIE. Longer baseline RV campaigns should be performed in order to unveil the true nature of this long period signal.

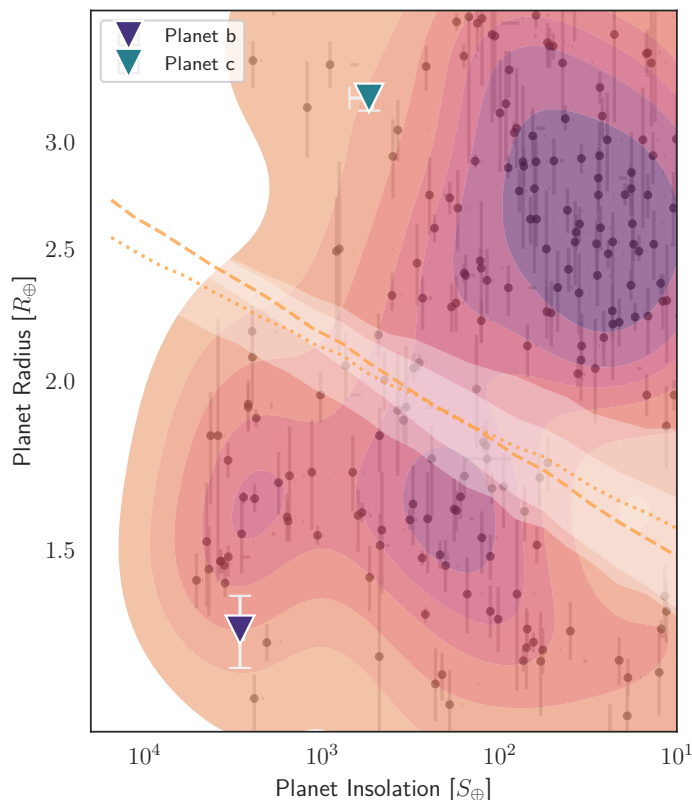


Fig. 16. HD 93963 A b & c (filled triangles) as a function of planetary radius and insolation, compared with the population of exoplanets. Colours represent a kernel density estimation (KDE) applied to small ($R_p < 4R_\oplus$), transiting planets retrieved from the NASA Exoplanet Archive (Akeson et al. 2013). The dashed and dotted lines (with associated 1σ white error bands) show estimates for the position of the evaporation valley from Martinez et al. (2019) and Van Eylen et al. (2018) respectively.

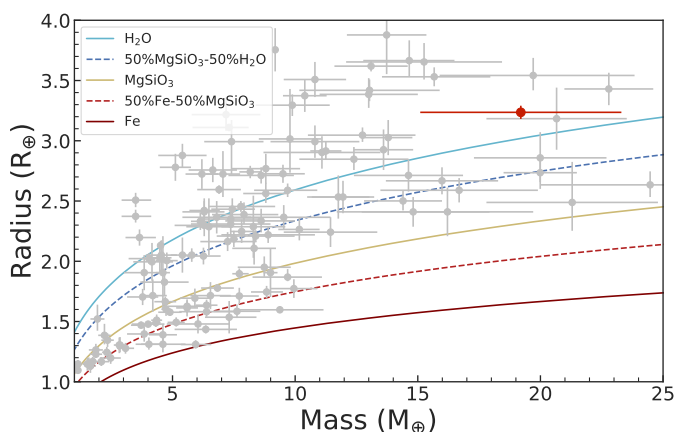


Fig. 17. Mass-radius diagram for small planets ($R_p < 4R_\oplus$), as retrieved from the catalogue for transiting planets TEPcat (Southworth et al. 2011). Planets whose masses and radii are known with a precision better than 22% are plotted with grey circles. The solid red circle marks the position of HD 93963 A c. Planets in the literature are marked with grey circles. Composition models from Zeng et al. (2016) are displayed with different lines and colours.

10. Discussion and conclusions

HD 93963 A is a northern ($\delta \approx +25^\circ$), young (~ 1.4 Gyr), visual binary at 82.5 pc from the Sun consisting of a bright ($G=9.0$) G0 V star and a $\Delta G = 7.8$ magnitudes fainter M-type dwarf. The two stars have an angular separation of $\sim 5.9''$, which corresponds to a sky-projected separation of ~ 484 AU.

The brightest component has a rotation period of $P_{\text{rot}} = 12.8 \pm 1.8$ d (as estimated from the TESS light curve), a mass of $M_\star = 1.109 \pm 0.043 M_\odot$, a radius of $R_\star = 1.043 \pm 0.009 R_\odot$, an effective temperature of $T_{\text{eff}} = 5987 \pm 64$ K, and an iron content of $[\text{Fe}/\text{H}] = 0.10 \pm 0.04$. HD 93963 B is an M5 V star, with an estimated mass of $\sim 0.16 M_\odot$ and radius of $\sim 0.20 R_\odot$. If we assume that the orbit of the smaller companion is seen face on and that the eccentricity is zero, we can use Kepler's third law to estimate that the binary has an orbital period of about 8875 years.

HD 93963 A hosts two transiting small planets, namely, HD 93963 A b and HD 93963 A c. The inner planet, HD 93963 A b, is a hot super-Earth with an orbital period of ~ 1.04 d, a radius of $R_b = 1.35 \pm 0.042 R_\oplus$, a predicted mass of $M_b \approx 2.4 M_\oplus$ (according to the mass-radius empirical relation from Otegi et al. 2020), and an equilibrium temperature of $T_{\text{eq},b} = 2042 \pm 27$ K (assuming zero albedo). Based on its orbital period and radius, HD 93963 A b can be classified as a small ultra-short period (USP) planet, the first USP planet discovered and validated by TESS and CHEOPS. The outer planet, HD 93963 A c, is a sub-Neptune with an orbital period of ~ 3.65 d, a radius of $R_c = 3.228 \pm 0.059 R_\oplus$, and an RV-determined mass of $M_c = 19.2 \pm 4.1 M_\oplus$, implying a mean density of $\rho_c = 3.1 \pm 0.7 \text{ g cm}^{-3}$. Given the vicinity to its host star, HD 93963 A c is also hot, with an equilibrium temperature of $T_{\text{eq},c} = 1344 \pm 18$ K. With inclinations of $i_b = 86.21^{+1.69}_{-1.14}$ deg and $i_c = 86.31 \pm 0.19$ deg, the orbits of the two planets might be coplanar.

In Fig. 16, we show the position of the two planets in the planetary radius-insolation scatter plot. HD 93963 A b and c fall on opposite sides of the so-called *radius valley*, a gap identified in the bi-modal distribution of small exoplanet radii (Fulton et al. 2017; Van Eylen et al. 2018). This gap is predicted by photo-evaporation models, which suggest that the loss of H/He atmospheres in close-in planets is a consequence of the strong stellar irradiation (Lopez & Fortney 2014). The two planets might have experienced drastically different evolution processes. Due to its semi-major axis $a_b = 0.02085 \pm 0.00037$ AU, which implies a strong irradiation from the star ($\sim 2900 F_\oplus$, see Table 5), the atmosphere of HD 93963 A b probably underwent photo-evaporation (Owen et al. 2020) and now the planet has no gaseous content. For HD 93963 A c, the position in the radius-insolation plot is insufficient to conclude on the possible presence of an atmosphere. We therefore refer to the mass-radius diagram in Fig. 17, where the planet is marked as a red circle. We notice that HD 93963 A c is located in a low populated area of the diagram. The only close-by planets are TOI-132 b ($M_p = 22.8 M_\oplus$, $R_p = 3.4 R_\oplus$, $P_p = 2.1$ d; Díaz et al. 2020), K2-25 b ($M_p = 24.5 M_\oplus$, $R_p = 3.4 R_\oplus$, $P_p = 3.5$ d; Stefansson et al. 2020), NGTS-4 b ($M_p = 20.6 M_\oplus$, $R_p = 3.2 R_\oplus$, $P_p = 1.3$ d; West et al. 2019) and TOI-824 b ($M_p = 18.5 M_\oplus$, $R_p = 2.9 R_\oplus$, $P_p = 1.4$ d; Burt et al. 2020), for which an atmosphere rich in volatiles has been predicted. We can therefore suppose that HD 93963 A c is surrounded by a primary (therefore H/He-dominated) atmosphere, an hypothesis corroborated by the mean density of the planet ($\rho_c = 3.1 \pm 0.7 \text{ g cm}^{-3}$) being

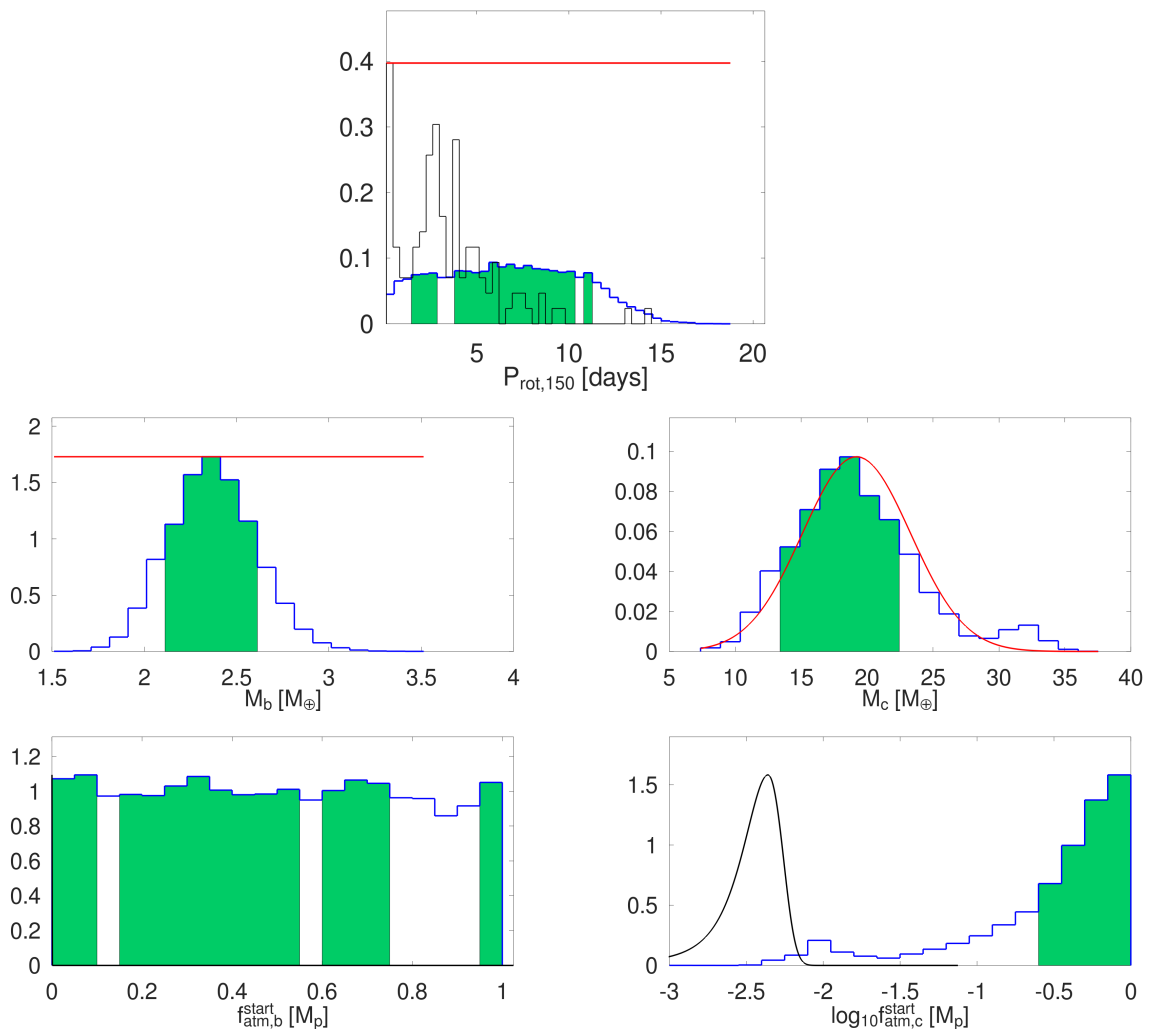


Fig. 18. Results of the PASTA modelling. *Upper panel:* Posterior-distribution of the stellar rotation rate at an age of 150 Myr. The black line represents the distribution measured from a sample of open cluster stars of comparable mass and age (Johnstone et al. 2015). *Middle and Lower panels:* Posterior-distributions of planetary mass (middle) and initial atmospheric mass fraction (bottom) for HD 93963 A b and c. The red lines represent the imposed priors (uniform or Gaussian), while in the bottom-right panel the black line shows the current atmospheric mass fraction estimated by PASTA on the basis of the measured planetary mass and radius and estimated equilibrium temperature. We note that the x axis of the bottom-left panel is in linear scale, while that of the bottom-right panel is in logarithmic scale.

significantly lower than that of Earth and by its position in the mass-radius diagram above the 100 % H₂O composition.

To confirm our predictions on the atmospheric content of both planets and to derive an independent constraint on the mass of HD 93963 A b, we employed the tool Planetary Atmospheres and Stellar Rotation Rates (PASTA; Bonfanti et al. 2021b). Starting from the measured system parameters, PASTA returns posterior probability distributions for the initial atmospheric mass fraction of each planet and for the evolution of the stellar rotation rate. To this end, PASTA uses the connection existing between the rotation rate and high-energy (mainly X-ray and EUV) emission of late-type stars and, through this, traces the impact of the stellar high-energy emission on planetary atmospheric escape throughout the system lifetime.

We found that HD 93963 A c can only host an atmosphere if at young ages the stellar rotation period was shorter than the average value measured for stars in young open clusters (Johnstone et al. 2015). This is shown in the top panel of Fig. 18, which presents the posterior probability distribution of the stellar rotation rate at an age of 150 Myr derived by PASTA. Although

this posterior does not have a narrow peak, it clearly favours rotation evolutionary tracks slower than those measured for stars member of young open clusters that we use as a comparison: if at a young age the host star was rotating fast (emitting a larger amount of X-ray and EUV radiation), HD 93963 A c would have completely lost its atmosphere, in contradiction to its measured average density.

Using the constraint on the evolution of the stellar rotation rate, PASTA simultaneously provides a constraint on the mass of HD 93963 A b. We find that the posterior probability distribution for the mass of HD 93963 A b is centred around 2.4 M_⊕ (left-middle panel of Figure 18). Combined with the measured planetary radius, this value leads to an Earth-like density, and thus it confirms our prediction that HD 93963 A b has completely lost its primary atmosphere through escape.

Finally, PASTA enables one to constrain the initial atmospheric mass fraction ($f_{\text{atm}}^{\text{start}}$), which is the mass of a planetary atmosphere (in planetary masses) at the time of the dispersal of the protoplanetary nebula. The posterior probability distributions of $f_{\text{atm}}^{\text{start}}$ for both planets are shown in the bottom panels

of Figure 18. A HD 93963 A b has completely lost its primary atmosphere at some point in the past, PASTA is unable to constrain the initial atmospheric mass fraction. For HD 93963 A c, instead, PASTA derives an initial atmospheric mass fraction peaking around 0.15 planetary masses, which is about 50 times higher than the estimated current atmospheric content (about 0.004 planetary masses; black line in the bottom-right panel of Figure 18).

Using the stellar photospheric abundances of Mg, Si, and Fe and the stoichiometric model presented in Santos et al. (2015, 2017), we estimated the iron mass fraction (f_{iron}) of the planet building blocks assuming that the host star composition reflects the composition of the protoplanetary disk. For f_{iron} we obtained a value of $34.4 \pm 2.8\%$, which is larger than that of our Earth $\sim 32\%$ (McDonough 2003) and of the planet building blocks of our Solar System ($33.2 \pm 1.7\%$) estimated with the aforementioned stoichiometric model. Recently, Adibekyan et al. (2021a) showed that there is a statistically significant correlation between f_{iron} and the density of terrestrial planets normalized to the density of a planet with an Earth-like composition (Dorn et al. 2017). The normalization accounts for the dependence of planet’s density on the planet mass for the same composition. This finding was further confirmed by Adibekyan et al. (2021b) based on a slightly larger sample. Using the aforementioned relation between the normalized density ($\rho/\rho_{\text{Earth-like}}$) and f_{iron} we estimated the $\rho/\rho_{\text{Earth-like}}$ of HD 93963 b to be 1.01 ± 0.34 . This value combined with the planet radius allowed us to estimate the mass of $2.9^{+1.3}_{-1.2} M_{\oplus}$, which is slightly larger but within the uncertainties consistent with the one computed with PASTA and the mass predicted using the mass-radius relation of Otegi et al. (2020). We could not constrain the iron composition of the two planets, although in Adibekyan et al. (2021a) the authors found that the iron mass fraction of potentially rocky planets is usually larger than that expected from the host star composition.

HD 93963 A b belongs to the family of small ($R_p = 1 - 2 R_{\oplus}$) USP planets, high-density rocky objects ($> 4.5 \text{ g cm}^{-3}$) with occurrence rates ranging from $\sim 1.1\%$ for M-type dwarfs to $\sim 0.15\%$ for F-type dwarfs (Winn et al. 2018). Small USP planets are thought to be stripped cores of former warm Neptunes and mini-Neptunes with radii between 2 and $4 R_{\oplus}$, which underwent photo-evaporation processes (Lundkvist et al. 2016; Sanchis-Ojeda et al. 2014). As we demonstrated with our analysis, this is likely the case for HD 93963 A b, which is expected to have completely lost its primary atmosphere. In addition, similarly to most USP small planets, HD 93963 A b belongs to a packed multi-planet system, which includes a second planet on a 3.65 d orbit, and our SOPHIE RV measurements show a linear trend (Sect 9), suggesting the possible presence of an additional, long-period planet orbiting the star.

Ultra-short period planets likely formed further out in the system, before migrating to the close-in orbit where it is now. Petrovich et al. (2019) proposed a secular migration scenario in which the planets of the systems are initially on highly eccentric and highly mutually inclined ($> 30^\circ$) orbits. As migration begins, the eccentricities are damped out on timescales from kyrs to Myrs (although the current value could still be well different from zero), due to tidal dissipation within the planets, while the orbital inclinations are damped out on timescales of Gyrs by the dissipation inside the host star (Winn et al. 2018). As a result the planets of the system reached stabilization on highly mutually inclined and/or highly eccentric orbits. This model could work for HD 93963 A if the planets were on highly eccentric orbits (≥ 0.1) and it has been shown to work for many systems hosting USP planets (Dai et al. 2018; Kamiaka et al. 2019). On

the other hand, HD 93963 A might be a coplanar system, and it therefore might have migrated through another secular process, as reported by Petrovich et al. (2019) in their Section 5.2.2. According to this migration channel, the planets were in orbits with low eccentricities and low mutual inclinations when they started migrating. The migration process happens in a non-violent way, with the eccentricities damped to zero by tidal forces and small inclination fluctuations. After a few Gyrs the planets in the system should be nearly coplanar, comprising a USP planet and a second companion with period shorter than 10 d. Only a small number of systems with USP planets have reached these final conditions: TOI-561 (Lacedelli et al. 2021), TOI-500 (Serrano et al. 2022), CoRoT-7 (Léger et al. 2009; Hatzes et al. 2010; Haywood et al. 2014b; Faria et al. 2016). Unlike this small subset of systems, HD 93963 A is a young star, meaning that for this model to work the planets should have already been on coplanar or almost coplanar orbits when they started migrating. Compared to other multi-planet systems with USP planets, HD 93963 A has a relatively close spacing between the orbits of the inner two planets (comparable to CoRoT-7 and Kepler-42). This limits the possible extent of the migration of planet b, both because stability considerations set an outer limit for the orbit of planet b (it must have been far enough from HD 93963 A c at 3.65 d), and because the available angular momentum deficit in the system that could drive tidal migration would have been limited. The latter problem can be ameliorated if additional planets exist on exterior orbits.

In this context, it is also interesting to consider the possible influence of the binary companion on the system dynamics. While the system at present is extremely hierarchical, an inclined binary companion would attempt to impose Lidov–Kozai cycles on the planets (Lidov 1962; Kozai 1962). If the binary is on a circular orbit at its projected separation of 484 AU, the timescale for these to act on HD 93963 A c is (see Valtonen & Karttunen 2006, Eq. 9.48) ~ 1 Gyr, comparable to the system age, and would be longer if the binary were currently at pericentre on a wider orbit. Because of the stronger coupling between the two planets, Lidov–Kozai eccentricity cycles should be suppressed, with the planets maintaining coplanarity while becoming misaligned with the stellar equator, as in the similar system of 55 Cnc (Kaib et al. 2011). The timescale for this misalignment to be generated would be considerably reduced if additional undetected planets existed in the system. A measurement of misalignment between the stellar spin and the planetary orbits, via the Rossiter–McLaughlin effect, would therefore suggest the presence of one or more planets beyond HD 93963 A c.

HD 93963 A b is the first small USP planet confirmed and validated by TESS and CHEOPS. Further observations of the HD 93963 A system have the potential to yield new discoveries. It is a compact planetary system around a bright star that is easily accessible from the northern hemisphere. For instance, it can be observed from November until June with HARPS-N, the high-precision spectrograph mounted at the Telescopio Nazionale Galileo in La Palma (Spain). An intensive RV campaign with a spectrograph capable of reaching a precision of $\sim 1 \text{ m s}^{-1}$ would improve the precision on the mass of HD 93963 A c, measure the mass of HD 93963 A b, constrain the eccentricities of both planets, detect additional planetary companions, and monitor the long-term trend in order to unveil its origin (stellar or planetary). Such observations would enable the study of the system architecture, providing the “ingredients” necessary to constrain the migration process. Since HD 93963 A is a relatively young star (~ 1.4 Gyr) hosting at least two small planets, we would be able

to impose stronger constraints on the time scale of the migration process.

The precise RV follow up would finally allow us to add HD 93963 A to the relatively small sample of multi-planet systems hosting a small USP planet with both masses and radii measured, which currently counts 14 members (K2-141, TOI-561, Kepler-42, K2-106, K2-229, Kepler-407, 55 Cnc, LTT 3780, WASP-47, Kepler-32, Kepler-10, CoRoT -7, HD 3167 and TOI-500; see, e.g. the TEPcat catalogue, [Southworth et al. 2011](#), for references). Increasing this sample is fundamental to better constrain the theory of formation and migration of exotic objects such as USP planets and, more in general, of tightly packed multi-planet systems. Especially for HD 93963 A, the measurement of the planetary masses and eccentricities will allow us to perform stability analysis and understand whether the low-eccentricity migration process described in Sect. 10 could explain its current architecture.

Acknowledgements. CHEOPS is an ESA mission in partnership with Switzerland with important contributions to the payload and the ground segment from Austria, Belgium, France, Germany, Hungary, Italy, Portugal, Spain, Sweden, and the United Kingdom. The CHEOPS Consortium would like to gratefully acknowledge the support received by all the agencies, offices, universities, and industries involved. Their flexibility and willingness to explore new approaches were essential to the success of this mission. We acknowledge the use of public TESS data from pipelines at the TESS Science Office and at the TESS Science Processing Operations Center. Resources supporting this work were provided by the NASA High-End Computing (HEC) Program through the NASA Advanced Supercomputing (NAS) Division at Ames Research Center for the production of the SPOC data products. This research has made use of the NASA Exoplanet Archive, of the Exoplanet Follow-up Observation Program website, which are operated by the California Institute of Technology, under contract with the National Aeronautics and Space Administration under the Exoplanet Exploration Program. LMS & DG gratefully acknowledges financial support from the CRT foundation under Grant No. 2018.2323 “Gaseous or rocky? Unveiling the nature of small worlds”. SH gratefully acknowledges CNES funding through the grant 837319. ABr was supported by the SNSA. S.G.S. acknowledges support from FCT through FCT contract nr. CEECIND/00826/2018 and POPH/FSE (EC). Some of the observations in the paper made use of the High-Resolution Imaging instrument ‘Alopeke obtained under Gemini LLP Proposal Number: GN/S-2021A-LP-105. ‘Alopeke was funded by the NASA Exoplanet Exploration Program and built at the NASA Ames Research Center by Steve B. Howell, Nic Scott, Elliott P. Horch, and Emmett Quigley. Alopeke was mounted on the Gemini North (and/or South) telescope of the international Gemini Observatory, a programme of NSF’s OIR Lab, which is managed by the Association of Universities for Research in Astronomy (AURA) under a cooperative agreement with the National Science Foundation, on behalf of the Gemini partnership: the National Science Foundation (United States), National Research Council (Canada), Agencia Nacional de Investigación y Desarrollo (Chile), Ministerio de Ciencia, Tecnología e Innovación (Argentina), Ministério da Ciência, Tecnologia, Inovações e Comunicações (Brazil), and Korea Astronomy and Space Science Institute (Republic of Korea). ACC and TW acknowledge support from STFC consolidated grant number ST/M001296/1. MF and CMP gratefully acknowledge the support of the Swedish National Space Agency (DNR 65/19, 174/18). This project was supported by the CNES, under the Stellar Astrophysics Centre is provided by The Danish National Research Foundation (Grant agreement no.: DNR106). This work makes use of observations from the LCOGT network. LCOGT telescope time was granted by NOIRLab through the Mid-Scale Innovations Program (MSIP). MSIP is funded by NSF. YA and MJH acknowledge the support of the Swiss National Fund under grant 200020_172746. We acknowledge support from the Spanish Ministry of Science and Innovation and the European Regional Development Fund through grants ESP2016-80435-C2-1-R, ESP2016-80435-C2-2-R, PGC2018-098153-B-C33, PGC2018-098153-B-C31, ESP2017-87676-C5-1-R, MDM-2017-0737 Unidad de Excelencia Maria de Maeztu-Centro de Astrobiología (INTA-CSIC), as well as the support of the Generalitat de Catalunya/CERCA programme. The MOC activities have been supported by the ESA contract No. 4000124370. S.C.C.B. acknowledges support from FCT through FCT contracts nr. IF/01312/2014/CP1215/CT0004. XB, SC, DG, MF and JL acknowledge their role as ESA-appointed CHEOPS science team members. PC thanks the LSSTC Data Science Fellowship Program, which is funded by LSSTC, NSF Cybertraining Grant Number 1829740, the Brinson Foundation, and the Moore Foundation. her participation in the programme has benefited this work. A.De. acknowledges support from the European Research Council (ERC) under the European Union’s Horizon 2020 research and innovation programme

(project FOUR ACES, grant agreement No. 724427), and from the National Centre for Competence in Research “PlanetS” supported by the Swiss National Science Foundation (SNSF). The Belgian participation to CHEOPS has been supported by the Belgian Federal Science Policy Office (BELSPO) in the framework of the PRODEX Program, and by the University of Liège through an ARC grant for Concerted Research Actions financed by the Wallonia-Brussels Federation. L.D. is an F.R.S.-FNRS Postdoctoral Researcher. This work was supported by FCT - Fundação para a Ciência e a Tecnologia through national funds and by FEDER through COMPETE2020 - Programa Operacional Competitividade e Internacionalização by these grants: UID/FIS/04434/2019, UIDB/04434/2020, UIDP/04434/2020, PTDC/FIS-AST/32113/2017 & POCI-01-0145-FEDER-032113, PTDC/FIS-AST/28953/2017 & POCI-01-0145-FEDER-028953, PTDC/FIS-AST/28987/2017 & POCI-01-0145-FEDER-028987, O.D.S.D. is supported in the form of work contract (DL 57/2016/CP1364/CT0004) funded by national funds through FCT. B.-O.D. acknowledges support from the Swiss National Science Foundation (PP00P2-190080). This project has received funding from the European Research Council (ERC) under the European Union’s Horizon 2020 research and innovation programme (project FOUR ACES grant agreement No 724427). ZG was supported by the VEGA grant of the Slovak Academy of Sciences number 2/0031/22, and by the Slovak Research and Development Agency - the contract No. APVV-20-0148. M.G. is an F.R.S.-FNRS Senior Research Associate. CXH’s work was funded by the Australian Government through the Australian Research Council. KGI is the ESA CHEOPS Project Scientist and is responsible for the ESA CHEOPS Guest Observers Programme. She does not participate in, or contribute to, the definition of the Guaranteed Time Programme of the CHEOPS mission through which observations described in this paper have been taken, nor to any aspect of target selection for the programme. This work was granted access to the HPC resources of MesOSL financed by the Région Ile de France and the project Equip@Meso (reference ANR-10-EQPX-29-01) of the programme Investissements d’Avenir supervised by the Agence Nationale pour la Recherche. ML acknowledges support of the Swiss National Science Foundation under grant number PCEFP2_194576. PM acknowledges support from STFC research grant number ST/M001040/1. This work is partly supported by JSPS KAKENHI Grant Number JP17H04574, JP18H05439, JST CREST Grant Number JPMJCR1761, the Astrobiology Center of National Institutes of Natural Sciences (NINS) (Grant Number AB031010). This article is based on observations made with the MuSCAT2 instrument, developed by ABC, at Telescopio Carlos Sánchez operated on the island of Tenerife by the IAC in the Spanish Observatorio del Teide. This work was also partially supported by a grant from the Simons Foundation (PI Queloz, grant number 327127). Acknowledges support from the Spanish Ministry of Science and Innovation and the European Regional Development Fund through grant PGC2018-098153-B-C33, as well as the support of the Generalitat de Catalunya/CERCA programme. GyMSz and ZG acknowledges the support of the Hungarian National Research, Development and Innovation Office (NKFIH) grant K-125015, a PRODEX Institute Agreement between the ELTE Eötvös Loránd University and the European Space Agency (ESA-D/SCI-LE-2021-0025), the Lendület LP2018-7/2021 grant of the Hungarian Academy of Science and the support of the city of Szombathely. V.V.G. is an F.R.S.-FNRS Research Associate.

References

- Adibekyan, V., Dorn, C., Sousa, S. G., et al. 2021a, *Science*, 374, 330
 Adibekyan, V., Figueira, P., Santos, N. C., et al. 2015, *A&A*, 583, A94
 Adibekyan, V., Santos, N. C., Dorn, C., et al. 2021b, *Communications of the Byurakan Astrophysical Observatory*, 68, 447
 Adibekyan, V. Z., Sousa, S. G., Santos, N. C., et al. 2012, *A&A*, 545, A32
 Akeson, R., Chen, X., Ciardi, D., et al. 2013, *Publications of the Astronomical Society of the Pacific*, 125, 989
 Allard, F., Homeier, D., & Freytag, B. 2012, *Philosophical Transactions of the Royal Society of London Series A*, 370, 2765
 Angus, R., Morton, T. D., Foreman-Mackey, D., et al. 2019, *AJ*, 158, 173
 Armstrong, D. J., Lopez, T. A., Adibekyan, V., et al. 2020, *Nature*, 583, 39
 Baglin, A., Auvergne, M., Boisnard, L., et al. 2006, in *36th COSPAR Scientific Assembly*, Vol. 36, 3749
 Barnes, S. A. 2010, *ApJ*, 722, 222
 Barragán, O., Aigrain, S., Rajpaul, V. M., & Zicher, N. 2021, *MNRAS*
 Barragán, O., Gandolfi, D., & Antoniciello, G. 2019, *MNRAS*, 482, 1017
 Barragán, O., Gandolfi, D., Dai, F., et al. 2018, *A&A*, 612, A95
 Bensby, T., Feltzing, S., & Lundström, I. 2003, *A&A*, 410, 527
 Bensby, T., Feltzing, S., & Oey, M. S. 2014, *A&A*, 562, A71
 Benz, W., Broeg, C., Fortier, A., et al. 2021, *Experimental Astronomy*, 51, 109
 Blackwell, D. E. & Shallis, M. J. 1977, *MNRAS*, 180, 177
 Bonfanti, A., Delrez, L., Hooton, M. J., et al. 2021a, *A&A*, 646, A157

- Bonfanti, A., Fossati, L., Kubyskhina, D., & Cubillos, P. E. 2021b, *A&A*, 656, A157
- Bonfanti, A., Ortolani, S., & Nascimbeni, V. 2016, *A&A*, 585, A5
- Bonfanti, A., Ortolani, S., Piotto, G., & Nascimbeni, V. 2015, *A&A*, 575, A18
- Borsato, L., Piotto, G., Gandolfi, D., et al. 2021, *MNRAS*
- Borucki, W. J., Koch, D., Basri, G., et al. 2010, *Science*, 327, 977
- Bouchy, F., Díaz, R. F., Hébrard, G., et al. 2013, *A&A*, 549, A49
- Bouchy, F., Hébrard, G., Udry, S., et al. 2009, *A&A*, 505, 853
- Bovy, J. 2015, *ApJS*, 216, 29
- Brown, T. M., Baliber, N., Bianco, F. B., et al. 2013, *Publications of the Astronomical Society of the Pacific*, 125, 1031
- Buchhave, L. A., Bakos, G. Á., Hartman, J. D., et al. 2010, *ApJ*, 720, 1118
- Buchhave, L. A., Bizzarro, M., Latham, D. W., et al. 2014, *Nature*, 509, 593
- Buchhave, L. A., Latham, D., Johansen, A., et al. 2012, *Nature*, 486, 375
- Burt, J. A., Nielsen, L. D., Quinn, S. N., et al. 2020, *AJ*, 160, 153
- Cabrera, J., Csizmadia, S., Erikson, A., Rauer, H., & Kirste, S. 2012, *A&A*, 548, A44
- Cardelli, J. A., Clayton, G. C., & Mathis, J. S. 1989, *ApJ*, 345, 245
- Carleo, I., Gandolfi, D., Barragán, O., et al. 2020, *AJ*, 160, 114
- Castelli, F. & Kurucz, R. L. 2003, in *IAU Symposium*, Vol. 210, *Modelling of Stellar Atmospheres*, ed. N. Piskunov, W. W. Weiss, & D. F. Gray, A20
- Chen, D.-C., Yang, J.-Y., Xie, J.-W., et al. 2021, *AJ*, 162, 100
- Choi, J., Dotter, A., Conroy, C., et al. 2016, *ApJ*, 823, 102
- Ciardi, D. R., Beichman, C. A., Horch, E. P., & Howell, S. B. 2015, *ApJ*, 805, 16
- Claret, A. 2017, *A&A*, 600, A30
- Claret, A. 2021, *Research Notes of the American Astronomical Society*, 5, 13
- Collins, K. A., Kielkopf, J. F., Stassun, K. G., & Hessman, F. V. 2017, *AJ*, 153, 77
- Cosentino, R., Lovis, C., Pepe, F., et al. 2012, in *Society of Photo-Optical Instrumentation Engineers (SPIE) Conference Series*, Vol. 8446, *Ground-based and Airborne Instrumentation for Astronomy IV*, ed. I. S. McLean, S. K. Ramsay, & H. Takami, 84461V
- Courcol, B., Bouchy, F., Pepe, F., et al. 2015, *A&A*, 581, A38
- Cutri, R. M. & et al. 2013, *VizieR Online Data Catalog*, II/328
- Dai, F., Masuda, K., & Winn, J. N. 2018, *ApJ*, 864, L38
- Daylan, T., Píngel, K., Wright, J., et al. 2021, *AJ*, 161, 85
- Dekany, R., Roberts, J., Burruss, R., et al. 2013, *ApJ*, 776, 130
- Delrez, L., Ehrenreich, D., Alibert, Y., et al. 2021, *Nature Astronomy*
- Díaz, M. R., Jenkins, J. S., Gandolfi, D., et al. 2020, *MNRAS*, 493, 973
- Dorn, C., Venturini, J., Khan, A., et al. 2017, *A&A*, 597, A37
- Dotter, A. 2016, *ApJS*, 222, 8
- Doyle, A. P., Davies, G. R., Smalley, B., Chaplin, W. J., & Elsworth, Y. 2014, *MNRAS*, 444, 3592
- Dumusque, X., Boisse, I., & Santos, N. C. 2014, *ApJ*, 796, 132
- Faria, J. P., Haywood, R. D., Brewer, B. J., et al. 2016, *A&A*, 588, A31
- Fűrész, G. 2008, PhD thesis, University of Szeged, Hungary
- Frandsen, S. & Lindberg, B. 1999, in *Astrophysics with the NOT*, ed. H. Karttunen & V. Pirola, 71
- Fulton, B. J., Petigura, E. A., Howard, A. W., et al. 2017, *AJ*, 154, 109
- Furlan, E., Ciardi, D. R., Everett, M. E., et al. 2017, *AJ*, 153, 71
- Gaia Collaboration, Brown, A. G. A., Vallenari, A., et al. 2018, *A&A*, 616, A1
- Gaia Collaboration, Brown, A. G. A., Vallenari, A., et al. 2021a, *A&A*, 649, A1
- Gaia Collaboration, Brown, A. G. A., Vallenari, A., et al. 2021b, *A&A*, 649, A1
- Gandolfi, D., Alcalá, J. M., Leccia, S., et al. 2008, *ApJ*, 687, 1303
- Gandolfi, D., Barragán, O., Hatzes, A. P., et al. 2017, *AJ*, 154, 123
- Gandolfi, D., Fossati, L., Livingston, J. H., et al. 2019, *ApJ*, 876, L24
- Gandolfi, D., Parviainen, H., Deeg, H. J., et al. 2015, *A&A*, 576, A11
- Gandolfi, D., Parviainen, H., Fridlund, M., et al. 2013, *A&A*, 557, A74
- Gelman, A. & Rubin, D. B. 1992, *Statistical Science*, 7, 457
- Giacalone, S., Dressing, C. D., Jensen, E. L. N., et al. 2021, *AJ*, 161, 24
- Grziwa, S., Gandolfi, D., Csizmadia, S., et al. 2016, *AJ*, 152, 132
- Guerrero, N. M., Seager, S., Huang, C. X., et al. 2021, *ApJS*, 254, 39
- Hatzes, A. P. 2019, *The Doppler Method for the Detection of Exoplanets*
- Hatzes, A. P., Dvorak, R., Wuchterl, G., et al. 2010, *A&A*, 520, A93
- Hatzes, A. P., Fridlund, M., Nachmani, G., et al. 2011, *ApJ*, 743, 75
- Hayward, T. L., Brandl, B., Pirger, B., et al. 2001, *PASP*, 113, 105
- Haywood, R. D., Collier Cameron, A., Queloz, D., et al. 2014a, *MNRAS*, 443, 2517
- Haywood, R. D., Collier Cameron, A., Queloz, D., et al. 2014b, *MNRAS*, 443, 2517
- Hippke, M. & Heller, R. 2019, *A&A*, 623, A39
- Hirano, T., Dai, F., Gandolfi, D., et al. 2018, *AJ*, 155, 127
- Hobson, M. J., Díaz, R. F., Delfosse, X., et al. 2018, *A&A*, 618, A103
- Howell, S. B., Everett, M. E., Horch, E. P., et al. 2016, *ApJ*, 829, L2
- Howell, S. B., Everett, M. E., Sherry, W., Horch, E., & Ciardi, D. R. 2011, *AJ*, 142, 19
- Howell, S. B., Sobeck, C., Haas, M., et al. 2014, *PASP*, 126, 398
- Hoyer, S., Guterman, P., Demangeon, O., et al. 2020, *A&A*, 635, A24
- Jenkins, J. M., Twicken, J. D., McCauliff, S., et al. 2016a, in *Society of Photo-Optical Instrumentation Engineers (SPIE) Conference Series*, Vol. 9913, *Software and Cyberinfrastructure for Astronomy IV*, ed. G. Chiozzi & J. C. Guzman, 99133E
- Jenkins, J. M., Twicken, J. D., McCauliff, S., et al. 2016b, in *Proc. SPIE*, Vol. 9913, *Software and Cyberinfrastructure for Astronomy IV*, 99133E
- Jenkins, J. S., Díaz, M. R., Kurtovic, N. T., et al. 2020, *Nature Astronomy*, 4, 1148
- Johnson, D. R. H. & Soderblom, D. R. 1987, *AJ*, 93, 864
- Johnstone, C. P., Güdel, M., Brott, I., & Lüftinger, T. 2015, *A&A*, 577, A28
- Kaib, N. A., Raymond, S. N., & Duncan, M. J. 2011, *ApJ*, 742, L24
- Kamiaka, S., Benomar, O., Suto, Y., et al. 2019, *AJ*, 157, 137
- Kane, S. R., Yağcınkaya, S., Osborn, H. P., et al. 2020, *AJ*, 160, 129
- Kipping, D. M. 2013, *MNRAS*, 435, 2152
- Kovács, G., Zucker, S., & Mazeh, T. 2016, *BLS: Box-fitting Least Squares*
- Kozai, Y. 1962, *AJ*, 67, 591
- Kurucz, R. L. 1993, *SYNTHES spectrum synthesis programs and line data*
- Lacedelli, G., Malavolta, L., Borsato, L., et al. 2021, *MNRAS*, 501, 4148
- Latham, D. W., Rowe, J. F., Quinn, S. N., et al. 2011, *ApJ*, 732, L24
- Léger, A., Rouan, D., Schneider, J., et al. 2009, *A&A*, 506, 287
- Leleu, A., Alibert, Y., Hara, N. C., et al. 2021, *A&A*, 649, A26
- Lendl, M., Csizmadia, S., Deline, A., et al. 2020, *A&A*, 643, A94
- Lester, K. V., Matson, R. A., Howell, S. B., et al. 2021, *AJ*, 162, 75
- Li, J., Tenenbaum, P., Twicken, J. D., et al. 2019, *PASP*, 131, 024506
- Lidov, M. L. 1962, *Planet. Space Sci.*, 9, 719
- Lindgren, L., Bastian, U., Biermann, M., et al. 2021, *A&A*, 649, A4
- Lissauer, J. J., Marcy, G. W., Rowe, J. F., et al. 2012, *ApJ*, 750, 112
- Lomb, N. R. 1976, *Ap&SS*, 39, 447
- Lopez, E. D. & Fortney, J. J. 2014, *ApJ*, 792, 1
- Lundkvist, M. S., Kjeldsen, H., Albrecht, S., et al. 2016, *Nature Communications*, 7, 11201
- Luque, R., Serrano, L. M., Molaverdikhani, K., et al. 2021, *A&A*, 645, A41
- Mamajek, E. E. & Hillenbrand, L. A. 2008, *ApJ*, 687, 1264
- Mandel, K. & Agol, E. 2002, *ApJ*, 580, L171
- Marigo, P., Girardi, L., Bressan, A., et al. 2017, *ApJ*, 835, 77
- Martinez, C. F., Cunha, K., Ghezzi, L., & Smith, V. V. 2019, *The Astrophysical Journal*, 875, 29
- Matson, R. A., Howell, S. B., Horch, E. P., & Everett, M. E. 2018, *AJ*, 156, 31
- Maxted, P. F. L., Ehrenreich, D., Wilson, T. G., et al. 2022, *MNRAS*, 514, 77
- Mayor, M., Pepe, F., Queloz, D., et al. 2003, *The Messenger*, 114, 20
- Mayor, M. & Queloz, D. 1995, *Nature*, 378, 355
- McCully, C., Volgenau, N. H., Harbeck, D.-R., et al. 2018, in *Society of Photo-Optical Instrumentation Engineers (SPIE) Conference Series*, Vol. 10707, *Proc. SPIE*, 107070K
- McDonough, W. F. 2003, *Treatise on Geochemistry*, 2, 568
- McQuillan, A., Mazeh, T., & Aigrain, S. 2013, *ApJ*, 775, L11
- Morris, B. M., Delrez, L., Brandeker, A., et al. 2021, *A&A*, 653, A173
- Morris, R. L., Twicken, J. D., Smith, J. C., et al. 2020, *Kepler Data Processing Handbook: Photometric Analysis*, Kepler Science Document KSCI-19081-003
- Mugrauer, M. & Michel, K.-U. 2021, *Astronomische Nachrichten*, 342, 840
- Mulders, G. D., Pascucci, I., Apai, D., Frasca, A., & Molenda-Zakowicz, J. 2016, *AJ*, 152, 187
- Murdoch, K. A., Hearnshaw, J. B., & Clark, M. 1993, *ApJ*, 413, 349
- Narita, N., Fukui, A., Kusakabe, N., et al. 2019, *Journal of Astronomical Telescopes, Instruments, and Systems*, 5, 015001
- Otegi, J. F., Bouchy, F., & Helled, R. 2020, *A&A*, 634, A43
- Owen, J. E., Shaikhislamov, I. F., Lammer, H., Fossati, L., & Khodachenko, M. L. 2020, *Space Sci. Rev.*, 216, 129
- Parviainen, H., Tingley, B., Deeg, H. J., et al. 2019, *A&A*, 630, A89
- Pecaut, M. J. & Mamajek, E. E. 2013, *ApJS*, 208, 9
- Pepe, F., Cristiani, S., Rebolo, R., et al. 2021, *A&A*, 645, A96
- Perruchot, S., Kohler, D., Bouchy, F., et al. 2008, in *Society of Photo-Optical Instrumentation Engineers (SPIE) Conference Series*, Vol. 7014, *Ground-based and Airborne Instrumentation for Astronomy II*, ed. I. S. McLean & M. M. Casali, 70140J

- Petrovich, C., Deibert, E., & Wu, Y. 2019, *AJ*, 157, 180
- Piskunov, N. & Valenti, J. A. 2017, *A&A*, 597, A16
- Press, W. H., Teukolsky, S. A., Vetterling, W. T., & Flannery, B. P. 2002, *Numerical recipes in C++ : the art of scientific computing*
- Reddy, B. E., Lambert, D. L., & Allende Prieto, C. 2006, *MNRAS*, 367, 1329
- Ricker, G. R., Winn, J. N., Vanderspek, R., et al. 2015, *Journal of Astronomical Telescopes, Instruments, and Systems*, 1, 014003
- Sahu, K. C., Casertano, S., Bond, H. E., et al. 2006, *Nature*, 443, 534
- Salmon, S. J. A. J., Van Grootel, V., Buldgen, G., Dupret, M. A., & Eggenberger, P. 2021, *A&A*, 646, A7
- Sanchis-Ojeda, R., Rappaport, S., Winn, J. N., et al. 2014, *ApJ*, 787, 47
- Santos, N. C., Adibekyan, V., Dorn, C., et al. 2017, *A&A*, 608, A94
- Santos, N. C., Adibekyan, V., Mordasini, C., et al. 2015, *A&A*, 580, L13
- Santos, N. C., Sousa, S. G., Mortier, A., et al. 2013, *A&A*, 556, A150
- Savitzky, A. & Golay, M. J. E. 1964, *Analytical Chemistry*, 36, 1627
- Scargle, J. D. 1982, *ApJ*, 263, 835
- Schanche, N., Hébrard, G., Collier Cameron, A., et al. 2020, *MNRAS*, 499, 428
- Scuflaire, R., Théado, S., Montalbán, J., et al. 2008, *Ap&SS*, 316, 83
- Serrano, L. M., Barros, S. C. C., Oshagh, M., et al. 2018, *A&A*, 611, A8
- Serrano, L. M., Gandolfi, D., Mustill, A. J., et al. 2022, *Nature Astronomy*, 6, 736
- Silburt, A., Gaidos, E., & Wu, Y. 2015, *ApJ*, 799, 180
- Skrutskie, M. F., Cutri, R. M., Stiening, R., et al. 2006, *AJ*, 131, 1163
- Smith, J. C., Stumpe, M. C., Van Cleve, J. E., et al. 2012, *PASP*, 124, 1000
- Snedden, C. A. 1973, PhD thesis, THE UNIVERSITY OF TEXAS AT AUSTIN.
- Sousa, S. G. 2014, [arXiv:1407.5817] [arXiv: 1407.5817]
- Sousa, S. G., Santos, N. C., Adibekyan, V., Delgado-Mena, E., & Israelian, G. 2015, *A&A*, 577, A67
- Sousa, S. G., Santos, N. C., Israelian, G., Mayor, M., & Monteiro, M. J. P. F. G. 2007, *A&A*, 469, 783
- Southworth, J., Dominik, M., Jørgensen, U. G., et al. 2011, *A&A*, 527, A8
- Stassun, K. G., Oelkers, R. J., Pepper, J., et al. 2018, *AJ*, 156, 102
- Stefansson, G., Mahadevan, S., Maney, M., et al. 2020, *AJ*, 160, 192
- Stumpe, M. C., Smith, J. C., Catanzarite, J. H., et al. 2014, *PASP*, 126, 100
- Stumpe, M. C., Smith, J. C., Van Cleve, J. E., et al. 2012, *PASP*, 124, 985
- Swayne, M. I., Maxted, P. F. L., Triaud, A. H. M. J., et al. 2021, *MNRAS*, 506, 306
- Szabó, G. M., Gandolfi, D., Brandeker, A., et al. 2021, *A&A*, 654, A159
- Telting, J. H., Avila, G., Buchhave, L., et al. 2014, *Astronomische Nachrichten*, 335, 41
- Trotta, R. 2007, *MNRAS*, 378, 72
- Twicken, J. D., Catanzarite, J. H., Clarke, B. D., et al. 2018, *PASP*, 130, 064502
- Twicken, J. D., Chandrasekaran, H., Jenkins, J. M., et al. 2010, in *Society of Photo-Optical Instrumentation Engineers (SPIE) Conference Series*, Vol. 7740, *Software and Cyberinfrastructure for Astronomy*, ed. N. M. Radziwill & A. Bridger, 77401U
- Valenti, J. A. & Piskunov, N. 1996, *A&AS*, 118, 595
- Valtonen, M. & Karttunen, H. 2006, *The Three-Body Problem*
- Van Eylen, V., Agentoft, C., Lundkvist, M. S., et al. 2018, *MNRAS*, 479, 4786
- Van Grootel, V., Pozuelos, F. J., Thuillier, A., et al. 2021, *A&A*, 650, A205
- Vogt, S. S., Allen, S. L., Bigelow, B. C., et al. 1994, in *Society of Photo-Optical Instrumentation Engineers (SPIE) Conference Series*, Vol. 2198, *Instrumentation in Astronomy VIII*, ed. D. L. Crawford & E. R. Craine, 362
- West, R. G., Gillen, E., Bayliss, D., et al. 2019, *MNRAS*, 486, 5094
- Wilson, T. G., Goffo, E., Alibert, Y., et al. 2022, *MNRAS*, 511, 1043
- Winn, J. N. 2010, arXiv e-prints, arXiv:1001.2010
- Winn, J. N., Sanchis-Ojeda, R., & Rappaport, S. 2018, *New A Rev.*, 83, 37
- Wright, E. L., Eisenhardt, P. R. M., Mainzer, A. K., et al. 2010, *AJ*, 140, 1868
- Yee, S. W., Petigura, E. A., & von Braun, K. 2017, *ApJ*, 836, 77
- Zechmeister, M. & Kürster, M. 2009, *A&A*, 496, 577
- Zeng, L., Sasselov, D. D., & Jacobsen, S. B. 2016, *ApJ*, 819, 127
-
- ¹ Dipartimento di Fisica, Università degli Studi di Torino, via Pietro Giuria 1, I-10125, Torino, Italy e-mail: luisamaria.serrano@unito.it
- ² Aix Marseille Univ, CNRS, CNES, LAM, 38 rue Frédéric Joliot-Curie, 13388 Marseille, France
- ³ Department of Astronomy, Stockholm University, AlbaNova University Center, 10691 Stockholm, Sweden
- ⁴ Physikalisches Institut, University of Bern, Gesellschaftstrasse 6, 3012 Bern, Switzerland
- ⁵ Instituto de Astrofísica e Ciências do Espaço, Universidade do Porto, CAUP, Rua das Estrelas, 4150-762 Porto, Portugal
- ⁶ Instituto de Astrofísica de Canarias, 38200 La Laguna, Tenerife, Spain
- ⁷ Dept. Astrofísica, Universidad de La Laguna (ULL), E-38206 La Laguna, Tenerife, Spain
- ⁸ NASA Exoplanet Science Institute – Caltech/IPAC, 1200 E. California Blvd, Pasadena, CA 91125 USA
- ⁹ Space Science and Astrobiology Division NASA Ames Research Center M/S 245-6, Moffett Field, CA 94035
- ¹⁰ Center for Space and Habitability, Gesellschaftstrasse 6, 3012 Bern, Switzerland
- ¹¹ Observatoire Astronomique de l'Université de Genève, Chemin Pegasi 51, Versoix, Switzerland
- ¹² Department of Astronomy, Stockholm University, SE-106 91 Stockholm, Sweden
- ¹³ Space Research Institute, Austrian Academy of Sciences, Schmiedlstrasse 6, A-8042 Graz, Austria
- ¹⁴ Lund Observatory, Dept. of Astronomy and Theoretical Physics, Lund University, Box 43, 22100 Lund, Sweden
- ¹⁵ Centre for Exoplanet Science, SUPA School of Physics and Astronomy, University of St Andrews, North Haugh, St Andrews KY16 9SS, UK
- ¹⁶ Department of Physics and Kavli Institute for Astrophysics and Space Research, Massachusetts Institute of Technology, Cambridge, MA 02139, USA
- ¹⁷ Department of Physics, Shahid Beheshti University, Tehran, Iran
- ¹⁸ 2. Laboratoire J.-L. Lagrange, Observatoire de la Côte d'Azur (OCA), Université de Nice-Sophia Antipolis (UNS), CNRS, Campus Valrose, 06108 Nice Cedex 2, France
- ¹⁹ Leiden Observatory, University of Leiden, PO Box 9513, 2300 RA Leiden, The Netherlands
- ²⁰ Department of Space, Earth and Environment, Chalmers University of Technology, Onsala Space Observatory, 43992 Onsala, Sweden
- ²¹ Stellar Astrophysics Centre, Department of Physics and Astronomy, Aarhus University, Ny Munkegade 120, DK-8000 Aarhus C, Denmark
- ²² Nordic Optical Telescope, Rambla José Ana Fernández Pérez 7, E-38711 Breña Baja, Spain
- ²³ Center for Astrophysics | Harvard & Smithsonian, 60 Garden Street, Cambridge, MA 02138, USA
- ²⁴ Institute of Planetary Research, German Aerospace Center (DLR), Rutherfordstrasse 2, 12489 Berlin, Germany
- ²⁵ Rheinisches Institut für Umweltforschung an der Universität zu Köln, Aachener Strasse 209, 50931 Köln, Germany
- ²⁶ Departamento de Astrofísica, Universidad de La Laguna, 38206 La Laguna, Tenerife, Spain
- ²⁷ Institut de Ciències de l'Espai (ICE, CSIC), Campus UAB, Can Magrans s/n, 08193 Bellaterra, Spain
- ²⁸ Institut d'Estudis Espacials de Catalunya (IEEC), 08034 Barcelona, Spain
- ²⁹ Admatis, 5. Kandó Kálmán Street, 3534 Miskolc, Hungary
- ³⁰ Depto. de Astrofísica, Centro de Astrobiología (CSIC-INTA), ESAC campus, 28692 Villanueva de la Cañada (Madrid), Spain
- ³¹ Departamento de Física e Astronomia, Faculdade de Ciências, Universidade do Porto, Rua do Campo Alegre, 4169-007 Porto, Portugal
- ³² Harvard-Smithsonian Center for Astrophysics, 60 Garden Street, Office: P-333, Cambridge, MA 02138, MS-16, USA
- ³³ Université Grenoble Alpes, CNRS, IPAG, 38000 Grenoble, France
- ³⁴ NASA, Goddard Space Flight Center 8800 Greenbelt Rd, Greenbelt, MD 20771, USA

- ³⁵ Université de Paris, Institut de physique du globe de Paris, CNRS, F-75005 Paris, France
- ³⁶ Centre for Mathematical Sciences Lund University Box 118 SE 221 00, Lund Sweden
- ³⁷ Astrobiology Research Unit, Université de Liège, Allée du 6 Août 19C, B-4000 Liège, Belgium
- ³⁸ Space sciences, Technologies and Astrophysics Research (STAR) Institute, Université de Liège, Allée du 6 Août 19C, 4000 Liège, Belgium
- ³⁹ University of California at Santa Cruz
- ⁴⁰ Komaba Institute for Science, The University of Tokyo, 3-8-1 Komaba, Meguro, Tokyo 153-8902
- ⁴¹ Instituto de Astrofísica de Canarias (IAC), 38205 La Laguna, Tenerife, Spain
- ⁴² Astronomical Institute, Slovak Academy of Science, Stellar Department, Tatranská Lomnica, 05960 Vysoké Tatry, Slovakia
- ⁴³ ELTE Eötvös Loránd University, Gothard Astrophysical Observatory, 9700 Szombathely, Szent Imre h. u. 112, Hungary
- ⁴⁴ MTA-ELTE Exoplanet Research Group, 9700 Szombathely, Szent Imre h. u. 112, Hungary
- ⁴⁵ MTA-ELTE Lendület Milky Way Research Group, 9700 Szombathely, Szent Imre h. u. 112, Hungary
- ⁴⁶ University of Vienna, Department of Astrophysics, Türkenschanzstrasse 17, 1180 Vienna, Austria
- ⁴⁷ Institut d'astrophysique de Paris, UMR7095 CNRS, Université Pierre & Marie Curie, 98bis boulevard Arago, 75014 Paris, France
- ⁴⁸ Observatoire de Haute-Provence, CNRS, Université d'Aix-Marseille, 04870 Saint-Michel-l'Observatoire, France
- ⁴⁹ Department of Physics, University of Warwick, Gibbet Hill Road, Coventry CV4 7AL, United Kingdom
- ⁵⁰ Science and Operations Department - Science Division (SCI-SC), Directorate of Science, European Space Agency (ESA), European Space Research and Technology Centre (ESTEC), Keplerlaan 1, 2201-AZ Noordwijk, The Netherlands
- ⁵¹ NASA Ames Research Center, Mail Stop 269-3, Bldg. T35A, Rm. 102, P.O. Box 1, Moffett Field, CA 94035-0001, USA
- ⁵² Konkoly Observatory, Research Centre for Astronomy and Earth Sciences, 1121 Budapest, Konkoly Thege Miklós út 15-17, Hungary
- ⁵³ IMCCE, UMR8028 CNRS, Observatoire de Paris, PSL Univ., Sorbonne Univ., 77 av. Denfert-Rochereau, 75014 Paris, France
- ⁵⁴ Institut d'astrophysique de Paris, UMR7095 CNRS, Université Pierre & Marie Curie, 98bis blvd. Arago, 75014 Paris, France
- ⁵⁵ INAF, Osservatorio Astronomico di Padova, Vicolo dell'Osservatorio 5, 35122 Padova, Italy
- ⁵⁶ Astrophysics Group, Keele University, Staffordshire, ST5 5BG, United Kingdom
- ⁵⁷ Astrobiology Center, 2-21-1 Osawa, Mitaka, Tokyo 181-8588, Japan
- ⁵⁸ Department of Astrophysics, University of Vienna, Türkenschanzstrasse 17, 1180 Vienna, Austria
- ⁵⁹ INAF, Osservatorio Astrofisico di Catania, Via S. Sofia 78, 95123 Catania, Italy
- ⁶⁰ Citizen Scientist, Marica, Rio de Janeiro, Brazil
- ⁶¹ Institute of Optical Sensor Systems, German Aerospace Center (DLR), Rutherfordstrasse 2, 12489 Berlin, Germany
- ⁶² Dipartimento di Fisica e Astronomia "Galileo Galilei", Università degli Studi di Padova, Vicolo dell'Osservatorio 3, 35122 Padova, Italy
- ⁶³ ETH Zurich, Department of Physics, Wolfgang-Pauli-Strasse 27, 8093 Zurich, Switzerland
- ⁶⁴ Cavendish Laboratory, JJ Thomson Avenue, Cambridge CB3 0HE, UK
- ⁶⁵ ESTEC, European Space Agency, 2201AZ, Noordwijk, NL
- ⁶⁶ Center for Astronomy and Astrophysics, Technical University Berlin, Hardenberstrasse 36, 10623 Berlin, Germany
- ⁶⁷ Institut für Geologische Wissenschaften, Freie Universität Berlin, 12249 Berlin, Germany
- ⁶⁸ Royal Astronomical Society, Burlington House, Piccadilly, London W1J 0BQ, UK
- ⁶⁹ Department of Earth, Atmospheric and Planetary Sciences, Massachusetts Institute of Technology, Cambridge, MA 02139, USA
- ⁷⁰ Department of Aeronautics and Astronautics, MIT, 77 Massachusetts Avenue, Cambridge, MA 02139, USA
- ⁷¹ SETI Institute/NASA Ames Research Center
- ⁷² Institute of Astronomy, University of Cambridge, Madingley Road, Cambridge, CB3 0HA, United Kingdom

Appendix A: SOPHIE data

In Table [A.1](#) we report the radial velocity data of HD 93963 A obtained with SOPHIE instrument. The last two rows correspond to the observations acquired using the high-efficiency mode of the instrument.

Table A.1. Radial velocity measurements of HD 93963 A obtained with the SOPHIE spectrograph.

BJD _{UTC} -2 450 000	RV [km s ⁻¹]	σ_{RV} [km s ⁻¹]	FWHM [km s ⁻¹]	CCF Contrast	BIS [km s ⁻¹]	BERV [km s ⁻¹]	S/N ₃₅ ^(a) —	log R' _{HK} [dex]	$\sigma_{\log R'_{HK}}$ [dex]	H α	$\sigma_{H\alpha}$
59171.68254	13.2679	0.0030	8.6855	34.1512	0.0012	28.7697	53.9	-4.6654	0.0196	0.13196	0.00166
59175.66388	13.2628	0.0030	8.6765	34.0729	0.0247	28.9868	53.6	-4.7554	0.0226	0.12919	0.00166
59181.65817	13.2718	0.0030	8.6754	34.0541	-0.0094	29.0167	53.2	-4.5595	0.0152	0.12723	0.00167
59206.64221	13.2477	0.0030	8.6524	34.3134	-0.0117	25.7727	52.7	-4.6746	0.0173	0.13081	0.00170
59248.53304	13.2799	0.0031	8.7397	33.7943	-0.0121	10.2290	52.5	-4.6587	0.0165	0.13047	0.00170
59249.63983	13.3083	0.0063	8.7450	36.0736	-0.0380	9.5008	23.6	-4.7387	0.0689	0.14718	0.00448
59270.42489	13.2748	0.0031	8.7155	33.8769	0.0037	-0.5020	53.5	-4.6352	0.0170	0.13084	0.00162
59275.45107	13.2543	0.0031	8.6965	33.9194	0.0067	-3.0603	53.8	-4.6000	0.0149	0.13073	0.00161
59279.54811	13.2828	0.0031	8.7407	34.0541	-0.0019	-5.2748	54.6	-4.5855	0.0152	0.13238	0.00158
59280.42807	13.2850	0.0031	8.7600	34.0278	0.0103	-5.4861	55.7	-4.5926	0.0167	0.13302	0.00157
59281.51218	13.2821	0.0041	8.6802	33.8415	0.0305	-6.1773	39.7	-4.6969	0.0339	0.13615	0.00237
59305.47805	13.2705	0.0031	8.7279	33.8180	0.0068	-16.8856	52.6	-4.6080	0.0153	0.13069	0.00170
59330.40744	13.2761	0.0033	8.7347	32.6086	0.0019	-24.7656	52.2	-4.6377	0.0179	0.12923	0.00178
59337.36266	13.2820	0.0031	8.7330	34.2586	-0.0013	-26.1512	54.2	-4.6061	0.0157	0.13331	0.00163
59337.37065	13.3472	0.0242	8.8127	29.2515	0.1733	-26.1674	8.1	—	—	0.19168	0.01843
59337.44689	13.2885	0.0031	8.7328	34.0806	0.0004	-26.3059	55.3	-4.6052	0.0176	0.13198	0.00159
59339.40069	13.2831	0.0031	8.7437	34.1450	0.0162	-26.5831	54.1	-4.7147	0.0205	0.13187	0.00158
59340.37111	13.2623	0.0030	8.7039	34.2688	-0.0040	-26.6942	54.4	-4.6096	0.0173	0.12764	0.00156
59340.45879	13.2767	0.0030	8.6820	34.1901	0.0133	-26.8428	54.3	-4.6907	0.0192	0.12710	0.00156
59342.35182	13.2840	0.0030	8.6893	34.3234	-0.0050	-26.9677	53.8	-4.6020	0.0183	0.12749	0.00154
59342.45045	13.2864	0.0030	8.7028	34.1657	-0.0008	-27.1381	54.9	-4.6747	0.0179	0.12910	0.00159
59343.34600	13.2987	0.0030	8.6969	34.2927	-0.0046	-27.1000	53.5	-4.6417	0.0197	0.12641	0.00153
59343.42224	13.2963	0.0030	8.7109	34.2236	-0.0212	-27.2383	55.0	-4.6762	0.0178	0.12947	0.00160
59346.35068	13.2916	0.0031	8.7590	33.9897	0.0240	-27.4908	53.3	-4.5538	0.0135	0.13407	0.00168
59346.44088	13.2962	0.0031	8.7341	33.9766	-0.0063	-27.6404	53.8	-4.5034	0.0138	0.13278	0.00164
59348.34707	13.2703	0.0031	8.7316	34.1953	0.0122	-27.6960	53.6	-4.6247	0.0163	0.13109	0.00164
59359.35052	13.2814	0.0030	8.7334	34.0813	-0.0156	-28.2705	54.6	-4.6766	0.0201	0.13350	0.00158
59359.39217	13.2763	0.0030	8.6973	34.1965	0.0069	-28.3322	54.6	-4.6081	0.0175	0.12921	0.00156
59361.42563	13.2915	0.0031	8.7418	33.5236	0.0081	-28.3681	54.9	-4.6372	0.0235	0.12542	0.00155
59267.42645 ^(b)	13.2457	0.0031	10.3382	30.3026	0.0021	1.0045	127.8	-4.5529	0.0032	0.12614	0.00061
59269.41278 ^(b)	13.2503	0.0026	10.3402	30.4552	0.0047	0.0255	156.1	-4.5655	0.0023	0.12439	0.00048

Notes. ^(a) Signal-to-Noise ratio at order 35. ^(b) Observations acquired using high-efficiency mode.