

Corrections to the "Study on the Palaearctic *Pristiphora* species (Hymenoptera: Tenthredinidae)"

ATTILA HARIS

H-8142 Úrhida, Petőfi u. 103. Hungary, e-mail: attilaharis@yahoo.com

In 2006, a paper, titled Study on the Palaearctic *Pristiphora* species (Hymenoptera: Tenthredinidae) was published in *Natura Somogyiensis* 9. During the year since the time of publication, a few hidden mistakes came out that are corrected hereunder.

Most of the problems caused by the misplacement of *Pristiphora albobalteata* Takeuchi, 1933. Most of the Takeuchi types are deposited in the entomological collection of Okinawa University, Japan (curator: Dr. Hirowatari). Dr. Hirowatary sent me the *Pristiphora* types of Takeuchi. Unfortunately, the type of *Pristiphora albobalteata* or other specimens were missing from the Okinawa collection (probably lost). I made inquiry at the Tokyo Museum of Sciences as well (at Dr. Shinohara) but this try was also unsuccessful.

Benson discussed this species in his paper (BENSON, 1963: The Nematinae, Hymenoptera Tenthredinidae, of south-east Asia) - *Entomologisk Tidskrift* 84(1-2): 18-27) and compared it to *Pristiphora chalybeata* Benson, 1963 that has slightly but clearly emarginated sawsheath: "*P. albobalteata* Takeuchi 1933 (Japan) would appear to be closely related". Probably, Benson had never seen *P. albobalteata*, however his comparison suggested me to put this species into the same group with *P. chalybeata*. This year, I received a small series of Japanese Nematinae species from my colleague, Dr. Ladislav Roller and I found this species in this collection. I learned, that *Pristiphora albobalteata* Takeuchi only similar but not related either to *P. chalybeata* Benson, 1963 or to any other species of Table D where I originally placed it. Although, the studied specimen is perfectly match the description of Takeuchi (except that clypeus is black not white), I did not designated it as lectotype. Hereunder, I give the photo and genitalia drawing of this species (Figs. 1 and 2).

Corrections

Page 209.

Change:

3. Abdomen yellow or ochraceous or black with reddish or white middle band or only the abdominal sternites light coloured.

To:

3. Abdomen yellow or ochraceous or black with reddish middle band or only the abdominal sternites light coloured.

Page 215.**Change:**

- First tergite and apex of abdomen black, otherwise yellow or abdominal tergites with very pale/white middle band on 2-4 segments.....8.

To:

- First tergite and apex of abdomen black, otherwise yellow.....8.

Page 215:**Change:**

8. Hind femur entirely yellow, first tergite and abdominal apex (2 or 3 apical segments) black9.

- Black, pale yellow: labrum, clypeus, broad angles of pronotum, tegula, abdominal segments 2-4. Legs black, apices of coxae, trochanters, four anterior tibiae and their tarsi, posterior tibia except their apex and basal part of posterior basitarsus pale yellow. Stigma and venation dark brown. 5.0 mm.....*P. albobalteata* Takeuchi
Known only from Japan (Honshu).

9. Hind basitarsus black; head with sparse hairwarts; tegula in male yellow. Fig. 212. 6.5 mm.....*P. nigrotarsalina* Wei 2003
Known from China: Guangxi.

To:

8. Hind femur entirely yellow, first tergite and abdominal apex (2 or 3 apical segments) black9.

9. Hind basitarsus black; head with sparse hairwarts; tegula in male yellow. Fig. 212. 6.5 mm.....*P. nigrotarsalina* Wei 2003
Known from China: Guangxi.

(Antithesis is cancelled after point 8 because *P. albobalteata* Takeuchi is moved into table L.)

Page 219:**Change:**

2. Frontal field limited by ridges, tegula black or with white margin. Length of antenna various. Pronotum entirely black.....3.

- Frontal field not limited by ridges. 6.0 or 8.0 mm. Tegula pale brown or yellow. If tegula yellow, hind margin of pronotum also yellow. Antenna longer than abdomen. Legs dominantly black, in *P. werzhutskii* Lindqvist dominantly pale brown.....5.

To:

2. Frontal field limited by ridges, tegula black or with white margin. Length of antenna various. Pronotum entirely black.....5.

- Frontal field not limited by ridges. 6.0 or 8.0 mm. Tegula pale brown or yellow. If tegula yellow, hind margin of pronotum also yellow. Antenna longer than abdomen. Legs dominantly black, in *P. werzhutskii* Lindqvist dominantly pale brown.....3.

(nr. 5 and 3 are changed)

Page 229.**Change:**

9. Legs light coloured.....10.

- Legs dark.....14.

To:

9. Legs light coloured: yellow, whitish or reddish-brown (sometimes all femora may black but tibiae always light).....10.

- Legs dark (dominantly black or black and brown).....14.

Page 231

Change:

- Sawsheath in Fig. 25. Black, labrum, hind orbits reddish brown (sometimes black). Hind corners of pronotum, tegula yellowish brown. Knees, tibiae and tarsi yellow. Apices of tibiae and hind tarsi dark. Abdominal sternites yellowish (sometimes only in the middle). Wings hyaline, venation and stigma dark brown. 5.0 mm...*P. cretica* Schedl

To:

- Sawsheath in Fig. 25. Black, labrum, hind orbits reddish brown (sometimes black). Hind corners of pronotum, tegula yellowish brown. Knees, tibiae and tarsi yellow. Apices of tibiae and hind tarsi dark. Abdominal sternites yellowish (sometimes only in the middle). Wings hyaline, venation and stigma dark brown. 5.0 mm....*P. cretica* Schedl

Here runs *P. albobalteata* Takeuchi, 1933:

- Black, pale yellow: labrum, clypeus, broad angles of pronotum, tegula, abdominal segments 2-4. Legs black, apices of coxae, trochanters, four anterior tibiae and their tarsi, posterior tibia except their apex and basal part of posterior basitarsus pale yellow. Stigma and venation dark brown. 5.0 mm.....*P. albobalteata* Takeuchi



Fig. 1: *Pristiphora albobalteata* Takeuchi (photo Haris)

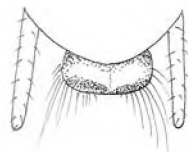


Fig. 2: Sawsheath of *Pristiphora albobalteata* (original)