



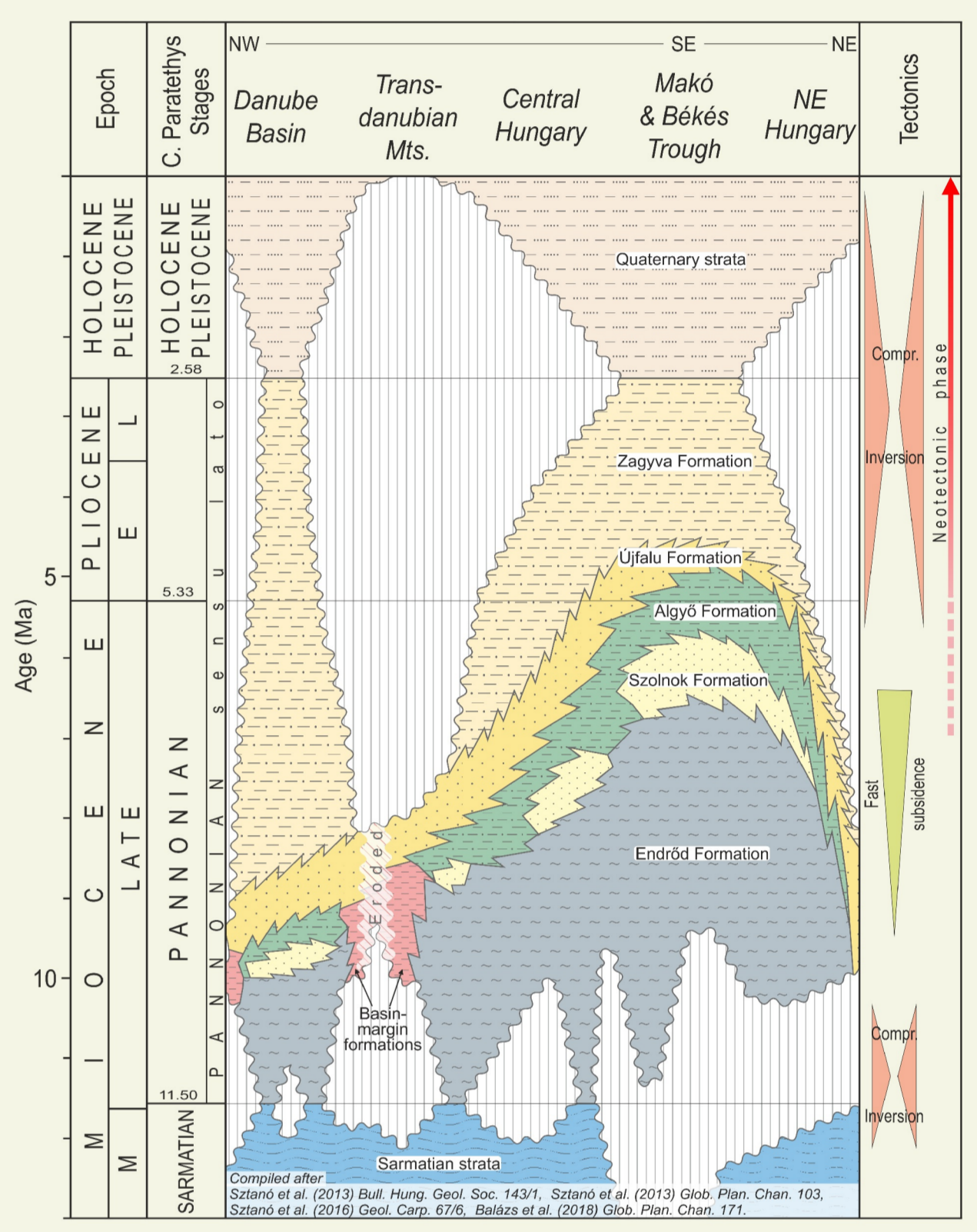
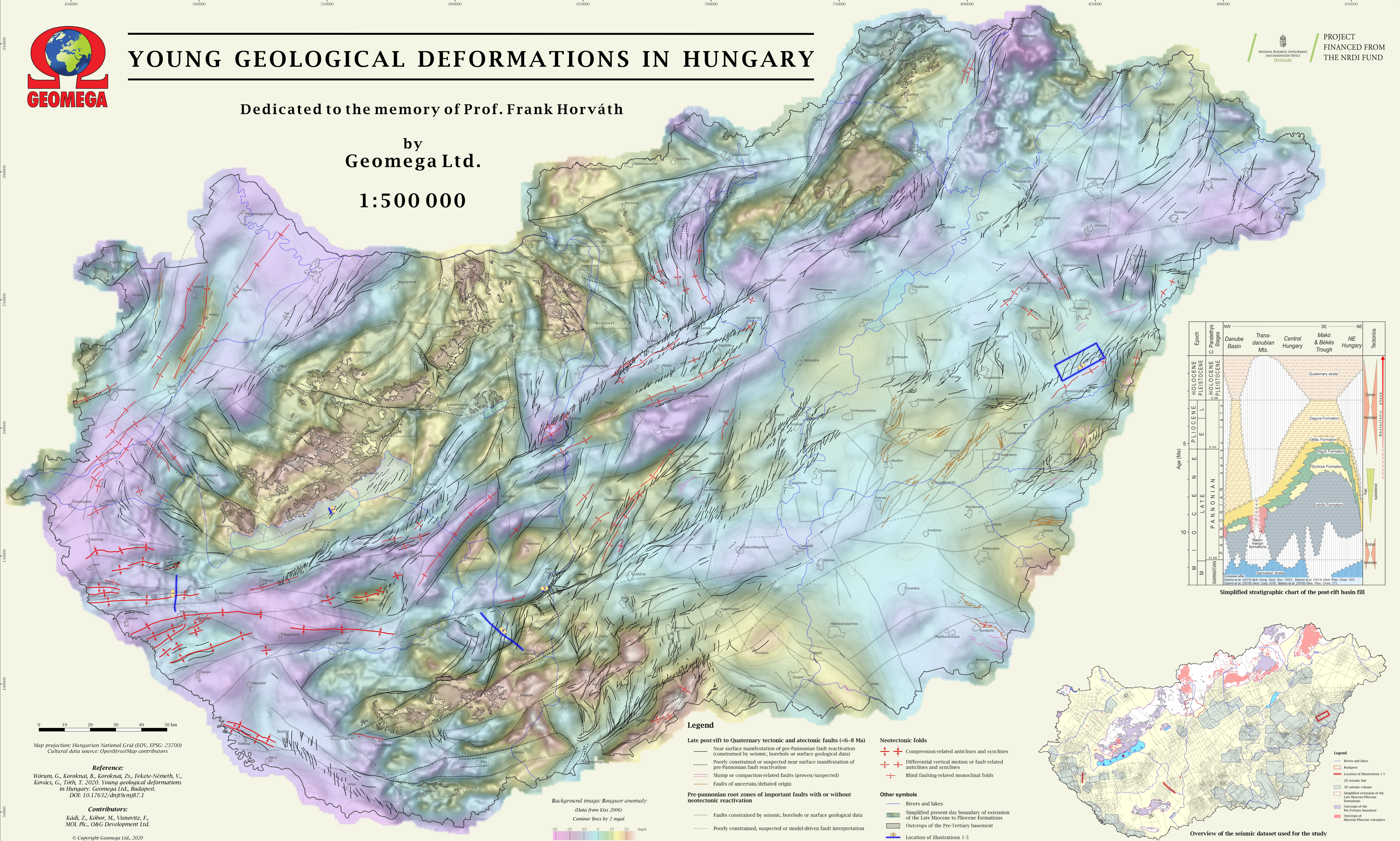
YOUNG GEOLOGICAL DEFORMATIONS IN HUNGARY

PROJECT FINANCED FROM THE NRDI FUND

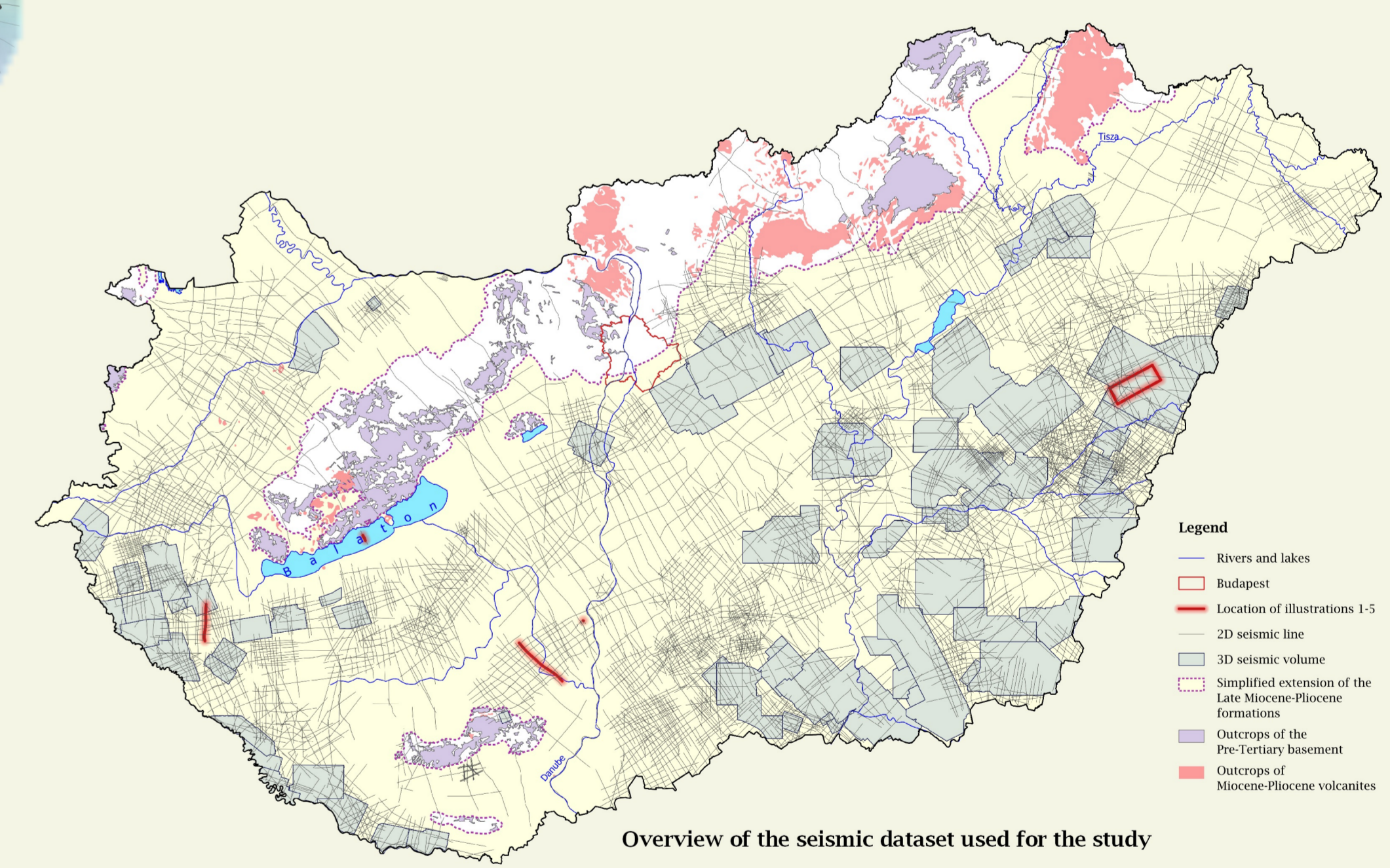
Dedicated to the memory of Prof. Frank Horváth

by Geomega Ltd.

1:500 000



- Legend**
- Late post-rift to Quaternary tectonic and atectonic faults (<6-8 Ma)**
 - Near surface manifestation of pre-Pannonian fault reactivation (constrained by seismic, borehole or surface geological data)
 - Poorly constrained or suspected near surface manifestation of pre-Pannonian fault reactivation
 - Slump or compaction-related faults (proven/suspected)
 - Faults of uncertain/debated origin
 - Pre-Pannonian root zones of important faults with or without neotectonic reactivation**
 - Faults constrained by seismic, borehole or surface geological data
 - Poorly constrained, suspected or model-driven fault interpretation
 - Neotectonic folds**
 - ++ Compression-related anticlines and synclines
 - ++ Differential vertical motion or fault-related anticlines and synclines
 - ++ Blind faulting-related monoclinial folds
 - Other symbols**
 - Rivers and lakes
 - Simplified present-day boundary of extension of the Late Miocene to Pliocene formations
 - Outcrops of the Pre-Tertiary basement
 - Location of illustrations 1-5



Characteristic neotectonic deformation features in the Pannonian Basin

