

The versatile functions of complement C3-derived ligands

Journal:	<i>Immunological Reviews</i>
Manuscript ID	Draft
Manuscript Type:	Invited Review
Date Submitted by the Author:	n/a
Complete List of Authors:	Erdei, Anna ; Eötvös Lorand University, Immunology
Keywords:	Complement < Molecules, B Cells < Cell Lineages and Subsets, Dendritic Cells < Cell Lineages and Subsets, Monocytes/Macrophages < Cell Lineages and Subsets, Cell Activation < Processes

The versatile functions of complement C3-derived ligands

Anna Erdei^{1,2}, Noémi Sándor², Bernadett Mácsik-Valent¹, Szilvia Lukácsi¹, Mariann Kremlitzka², Zsuzsa Bajtay¹

¹Department of Immunology, Eötvös Loránd University, Pázmány Péter s. 1/C, Budapest H-

²MTA-ELTE Immunology Research Group, Budapest, Eötvös Loránd University, Pázmány Péter s. 1/C, Budapest H-1117, Hungary

Corresponding author

Anna Erdei
Department of Immunology, Eötvös Loránd University,
Pázmány Péter s. 1/C, Budapest H-1117, Hungary
Phone: (+36)-1-3812-175
Fax: (+36)-1-3812-176
E-mail: anna.erdei@freemail.hu, or anna.erdei@tk.elte.hu

Running title:**Functions of complement C3-derived ligands****Summary**

The complement system is a major component of immune defence. Activation of the complement cascade by foreign substances and altered self-structures may lead to the elimination of the activating agent, and during the enzymatic cascade several biologically active fragments are generated. Most immune regulatory effects of complement are mediated by the activation products of C3, the central component. The indispensable role of C3 in opsonic phagocytosis as well as in the regulation of humoral immune response is known for long, while the involvement of complement in T cell biology have been revealed in the past few years. In this review we discuss the immune modulatory functions of C3-derived fragments focusing on their role in processes which have not been summarized so far. The importance of locally synthesized complement will receive special emphasis, since several immunological processes take place in tissues, where hepatocyte-derived complement components might not be available at high concentrations. We also aim to call the attention to important differences between human and mouse systems regarding C3-mediated processes.

Keywords:

Complement, B cell, monocyte/macrophage, dendritic cell, cell activation

Introduction

The complement system is one of the most versatile constituents of the immune system. This network of more than 30 soluble and cell surface proteins plays an important role in innate defence as well as instructing and regulating adaptive responses. Complement activation can be triggered by a wide variety of substances, including immune complexes, foreign structures, altered host cells and apoptotic bodies. The cascade involves sequential activation of complement components, leading to inflammation, clearance of pathogenic microorganisms and apoptotic cells, thus contributes to maintaining host homeostasis. In the course of activation several biologically active fragments are generated, which exert immune regulatory functions via binding to various complement receptors and regulators expressed by a wide variety of cell types.

Activation of the complement cascade can occur via three pathways: the classical, lectin-dependent and alternative route (*Fig. 1*). The classical pathway is set off by activation of the C1-complex, which is initiated by binding of its C1q subunit to the Ig Fc-region in antigen-antibody complexes, to apoptotic cells and to C reactive protein. The lectin pathway is triggered by Mannan Binding Lectin and ficolins, the pattern recognition molecules, which recognize carbohydrates on microbial surfaces. The alternative route is initiated by C3(H₂O), which is deposited on activator surfaces as a result of spontaneous and slow hydrolysis of C3 (“tick over mechanism”) and serves as an amplification loop for the other two activation routes. Independent of the initial trigger however, all these pathways lead to the formation of an enzymatic complex which cleaves C3, the central complement component.

In this review we focus on the immune modulatory role of C3-derived fragments, with particular attention to functions which have not been summarized so far. We emphasize

1
2
3 studies in human systems and aim to highlight similarities and important differences between
4
5 the human and mouse systems.
6
7
8
9

10 11 **Activation of component C3, generation of biologically active C3-fragments** 12 13

14
15
16 Component C3 is the most abundant complement protein in serum and body fluids. It is
17
18 present in the circulation in a concentration of 1.2–1.5 mg/ml, which is comparable to the
19
20 amount of IgG3 in human serum. The primary source of serum C3 is the liver, however its
21
22 local production by several cell types – including macrophages, dendritic cells, lymphocytes
23
24 and epithelial cells – in various tissues is also known to play an important role in the initiation
25
26 and regulation of adaptive immune responses (1-3).
27
28

29
30 The first cleavage products of the central component C3 are C3a and C3b (*Fig.1*). The
31
32 small soluble C3a peptide binds to guanine nucleotide binding protein (G-protein) coupled
33
34 C3a receptors, which are widely distributed in peripheral tissues and the central nervous
35
36 system, suggesting that this peptide plays a diverse and more prominent role in various
37
38 biological functions than earlier thought. The anaphylatoxic effect of C3a is known for long,
39
40 however its role in adaptive immunity has been revealed only in the past few years. These
41
42 results have been extensively reviewed recently elsewhere (4, 5).
43
44

45
46 Upon activation into fragment C3b the molecule undergoes marked conformational
47
48 changes exposing binding sites for interaction with other proteins (6). C3b in its nascent state
49
50 has the capacity to bind covalently to C3b-acceptor (C3bA) sites via its newly exposed, short-
51
52 lived thioester group (7). C3bAs are hydroxyl and amine groups of proteins or carbohydrates,
53
54 which are present on the activator surface, including cell membranes and various foreign
55
56 structures. It is known for long that covalently fixed C3b is not only a subunit of additional
57
58
59
60

1
2
3 C3-convertases, but serves as a regulator of the complement cascade and is the major ligand
4 to complement receptor type 1 (CR1, CD35). Activator-bound C3b can be further processed
5 by factor I to generate inactivated C3b (iC3b) and C3d(g), which remain covalently attached
6 to C3bAs and are ready to interact with complement receptors CR3, CR4, CR1g and CR2,
7 respectively (*Fig. 1*). The phagocytic complement receptor of the immunoglobulin superfamily
8 (CR1g), which binds C3b and iC3b has also been described on tissue resident macrophages
9
10
11
12
13
14
15
16 (8).
17
18
19
20
21
22

23 **Covalent binding of nascent C3b to C3bAs**

24
25
26
27 As alluded above, when C3 is activated by C3-convertases or trypsin-like serine proteases, the
28 internal thioester is exposed and approximately 10% of the generated nascent C3b molecules
29 form ester or amide bonds with proteins and carbohydrates during their short half-life. The
30 covalent binding reaction has been thoroughly studied employing red blood cells (RBCs) (7),
31 Sepharose-trypsin (9) and glycine and glycerol as representative small molecules with amino
32 and hydroxyl groups (10).
33
34
35
36
37
38
39

40 The phenomenon of immune adherence has been described long time ago by Nelson,
41 who demonstrated that complement-opsonized microorganisms adhere to human erythrocytes
42 (11). Later Fearon demonstrated that binding and clearance of C3-opsonized particulate
43 antigens and immune complexes (ICs) is mediated by CR1 present on human red blood cells,
44 and identified this complement receptor on other human cell types, including monocytes, B
45 cells and neutrophil granulocytes (12).
46
47
48
49
50
51
52

53
54 It is known for long, that the covalent fixation of C3 is necessary for opsonisation of
55 pathogens and foreign structures, which enhance their uptake by phagocytes via CR1, CR3
56
57
58
59
60

1
2
3 and CR4 receptors. Several molecules have been identified as C3bAs in various pathogens,
4
5 such as major outer membrane protein from *Legionella pneumophila* (13), lipophosphoglycan
6
7 from *Leishmania major* (14), glycolipid-1 from *Mycobacterium leprae* (15), and heparin-
8
9 binding hemagglutinin from *Mycobacterium tuberculosis* (16). In the membrane of RBCs
10
11 glycophorin was identified as the main C3bA molecule (17). As will be detailed in the next
12
13 section, the covalent attachment of C3b to nucleated cells has been demonstrated in several
14
15 studies, but so far only CR2 on human B lymphocytes has been identified as a C3bA site (18).
16
17
18
19

20 21 **C3b deposition on nucleated cells**

22
23
24

25 Autologous cells normally are protected by the regulatory molecules from C3b-fixation which
26
27 may lead to complement dependent lysis. Nevertheless, deposition of C3b onto the surface of
28
29 nucleated cells can occur not only in pathologic conditions, like in the case of malignantly
30
31 transformed cells (19, 20) and virus infected cells (21, 22), but also in physiological
32
33 conditions (23, 24) and in the case of the monocytic human cell line U937 (25). Furthermore
34
35 Matsumoto and Seya demonstrated C3 deposition and homotypic cell adhesion in the case of
36
37 P39, a human myeloid cell line (26). In mouse studies di Renzo et al. found that Lewis lung
38
39 carcinoma cells - which do not express complement receptors - fix C3 covalently to the cell
40
41 membrane, and after internalization of the acceptor-bound C3b the growth of these cells is
42
43 elevated (27).
44
45
46

47 Despite the fact that hydroxyl or amine groups of proteins and carbohydrates are
48
49 available on the cell membrane for the covalent interaction, nascent C3b does not react
50
51 randomly or non-specifically (28). This is confirmed by the study of Marquart et al. and our
52
53 findings, which demonstrate that normal human peripheral blood mononuclear cells (PBMCs)
54
55 are heterogeneous from this aspect and mainly B cells, macrophages and dendritic cells (DCs)
56
57
58
59
60

1
2
3 – i.e. cells which also may serve as antigen presenting cells (APCs) bind C3b covalently (23,
4
5 24, 29-36). T cells seem to acquire this capability only after activation (37, 38). In mice
6
7 macrophages and B cells, but not T lymphocytes were found to fix C3b covalently (34). These
8
9 data suggest that both the availability of C3bA sites and the limited proteolysis of deposited
10
11 C3-fragments on the cell membranes are regulated by so far unravelled factors and
12
13 mechanisms.
14
15

16 In the case of human B cells CR2 has been identified as the main C3bA, and it has
17
18 been proven that CR2 is involved in the formation of the alternative pathway convertase that
19
20 generates further nascent C3b fragments for covalent fixation (18, 30). However, CR2
21
22 negative human monocytes and granulocytes (24), human monocyte derived macrophages
23
24 (MDMs) (31), human monocyte derived dendritic cells (MDCs) (36), carcinoma cells (27)
25
26 and B cells derived from CR1/2 knock out (KO) mice (34) also have the capacity to fix C3b
27
28 covalently. Therefore additional, so far unidentified cell membrane molecules may also serve
29
30 as C3bAs. In the extract of serum or C3-treated cells high molecular weight complexes
31
32 containing C3-fragments had been detected by several groups, but the C3b-acceptor
33
34 molecules could not be identified (26, 27, 29, 39). Therefore the intriguing question still needs
35
36 to be answered: which cell membrane molecules serve as C3bAs on nucleated cells which do
37
38 not express CR2?
39
40
41
42

43 Nevertheless, as will be discussed in the next sections, various immunomodulatory
44
45 functions of C3bA-bound C3-fragments have been described in the case of several cell types.
46
47
48
49
50
51

52 **Immunomodulatory function of C3bA bound fragments**

53
54
55

56 C3-fragments as bivalent ligands enhance cytotoxic reactions
57
58
59
60

Potential of antibody dependent cellular cytotoxicity (ADCC) by target cell-bound C3b has been shown using human peripheral lymphocytes and C3b-coated chicken erythrocytes by Ghebrehiwet et al. (40), who demonstrated that at low anti-target antibody concentrations erythrocyte bound C3b significantly increased target cell lysis. The inverse situation has also been described; namely, effector cell-bound C3b was found to elevate ADCC, too. In these experiments concanavalin A stimulated human lymphocytes were demonstrated to cleave C3 by their cell membrane proteases and fix C3-fragments covalently, which enhanced the lysis of antibody-sensitized CR1-positive erythrocytes (37). These results clearly show that C3b, as a bivalent ligand, amplifies the cytotoxic reaction by improving the contact between the effector and target cells, regardless of the orientation of the complement fragment. This was strengthened by the studies of Ramos et al. using cells of Epstein-Barr virus (EBV)-positive Burkitt lymphoma lines which activate and bind C3 (22). They demonstrated that these lymphoblasts possess increased sensitivity to lymphocyte mediated lysis during complement dependent cellular cytotoxicity (CDCC).

C3-fragments fixed to APCs and exosomes enhance T cell responses

C3-derived fragments C3a, C3b and iC3b have been shown to affect T cell functions directly or via APCs. Modulation of T cell proliferation, differentiation and survival by the anaphylatoxic peptides C3a and C5a and their receptors has been extensively studied and reviewed recently (41-44).

Here we focus on the T cell modulatory effect of the larger C3-derived fragments; C3b and iC3b. The role of cell bound C3b in the process of antigen presentation was revealed by demonstrating that A20 murine cells of the B lymphoblastoid cell line and concanavalin A-

1
2
3 elicited peritoneal macrophages, which serve as APCs, are able to fix C3-fragments
4 covalently when incubated in autologous serum. These C3b-bearing cells were shown to
5 promote the proliferation of antigen-specific T cells, particularly at suboptimal antigen doses.
6
7 It has been proven that CR1/CR2 is expressed on the responding, activated T cells, which
8 interacts with C3b deposited to C3bAs on the surface of APCs, thus strengthening the contact
9 between the two cell types (32) (*Fig.2*). The possible *in vivo* significance of this bridge-
10 forming capacity of C3b was demonstrated by using APCs derived from mice injected with
11 gamma-inulin, a known adjuvant which activates the alternative pathway. It was found that
12 C3 split-products are deposited on the surface of macrophages *in vivo*, which elevate the
13 response of antigen specific T cells 2.5-fold compared with APCs of untreated animals (33).
14 The mechanism proposed might apply in all conditions when complement activating
15 antigens/adjuvants are used.
16
17
18
19
20
21
22
23
24
25
26
27
28

29
30 In addition to C3b fixed to APCs, exosomes released by these cells were also shown to
31 influence T cell responses. Earlier Raposo et al. demonstrated that activated APCs release
32 exosomes containing major histocompatibility complex (MHC), co-stimulatory and adhesion
33 molecules, which mediate antigen presentation to T cells (45). These studies were extended
34 and exosomes secreted by C3-fragment bearing murine B lymphocytes and macrophages were
35 investigated (34). It was found that these vesicles contain C3-fragments and significantly
36 enhance specific T cell responses at suboptimal antigen doses (*Fig.2*). This finding might
37 have an important relevance *in vivo*, since both virus-infected and tumor cells are known to
38 fix C3b (19-22). Therefore, C3b-coated exosomes released by these cells might contribute to
39 the immune response in pathologic conditions, particularly when the antigen stimulus is low.
40
41
42
43
44
45
46
47
48
49
50

51
52 Dendritic cells (DCs) – similarly to macrophages - are known to produce most of the
53 complement components, including C3, furthermore several functions of DCs were shown to
54 be influenced by complement receptors CR3 and CR4 (43, 46, 47). Using C3 KO animals
55
56
57
58
59
60

1
2
3 Zhou et al. proved the importance of this protein in antigen presentation (48). Importantly, the
4
5 role of C3 in the differentiation of DCs has been clearly demonstrated in a C3-deficient case
6
7 by Ghannam et al. (49).
8

9
10 It is known from the studies of several groups that ligation of CR3 and CR4 inhibits
11
12 DC maturation (50-53). To obtain a deeper insight into the role of complement in DC
13
14 functions, we focused our attention on the phenotypical and functional changes induced by
15
16 acceptor-bound C3b. Consistent with previous studies carried out with murine cells, human
17
18 MDCs were able to fix C3b covalently (36). When native C3 or fresh human serum was
19
20 added to MDCs allowing the covalent binding of C3b, a markedly increased expression of
21
22 MHCII, CD83 and CD86 molecules, and a significantly enhanced secretion of TNF- α , IL-6
23
24 and IL-8 cytokines were detected, while C3 inactivated by the nucleophilic methylamine had
25
26 no effect. These results are in agreement with data of Ghannam et al. who reported that in a
27
28 primary human C3-deficient patient DC maturation was lacking (49). They also found that the
29
30 total number of MDCs was significantly lower in this patient than in healthy individuals. It
31
32 has to be noted that the phenotype of MDCs stimulated by covalently bound C3-fragments
33
34 was markedly different from LPS matured MDCs, proving that a “danger signal” and a
35
36 physiological stimulus direct DC maturation into different ways (36). A further important
37
38 functional consequence of C3b-fixation was the elevated capacity of MDCs to stimulate
39
40 allogeneic T cells. The possible involvement of CR3 in fixing C3-fragments was excluded by
41
42 using CD11b RNA silenced cells. Modelling an *in vivo* occurring situation in secondary
43
44 lymphoid organs, activated macrophages and MDCs were cocultured, which resulted in
45
46 fixation of sufficient amounts of C3-fragments on the APCs to elevate T cell activation.
47
48 Regarding the mechanism of this process we propose that DC-bound C3b interacts with CR1
49
50 expressed on T lymphocytes and functions as an adhesion molecule between DCs and T cells
51
52 (*Fig.3*). In these experiments C3 production by MDCs could not be detected, therefore these
53
54
55
56
57
58
59
60

1
2
3 APCs were most probably “opsonized” by macrophage-derived C3-fragments. These results
4
5 broaden the concept of “local opsonisation” of microbes occurring in the close vicinity of
6
7 activated, C3 producing macrophages (54), and reveal a novel way to enhance the interplay
8
9 between macrophages, DCs and T lymphocytes (36). It should be noted, that a substantial
10
11 portion of the covalently fixed C3-fragments were internalized by MDCs in 30 minutes in our
12
13 experiments (36). Although the possible involvement of this intracellular C3 in promoting T
14
15 cell response was not investigated, it might have a role described recently by Botto et al. (55).
16
17 According to their studies C3 bound to dying cells can direct the cargo in APCs and influence
18
19 T cell response to antigens.
20
21
22

23 Considering that DCs and macrophages are present in tissues at strategically critical
24
25 sites where hepatocyte-derived complement is not available, C3 produced locally by these
26
27 cells might strongly influence the acquired immune response.
28
29
30
31
32
33

34 Human T cell derived iC3b deposited on the cell membrane promotes autologous T
35
36 cell proliferation
37
38
39
40

41 Production of the anaphylatoxic peptides C3a and C5a during cognate interactions between T
42
43 cells and APCs has been thoroughly investigated, and their role in T cell biology was
44
45 demonstrated over the past years in excellent papers (44, 56-58). Regarding complement
46
47 synthesis by human T cells and the effect of the larger C3-fragments on T cell functions
48
49 however, data are much sparse and controversial. Earlier Pantazis et al. showed that virus
50
51 infected T cell lines produce C3 (59) and recently Cardone et al. demonstrated C3b deposition
52
53 on activated CD4+ T cells (60). Studying human T cells derived from the blood and tonsil it
54
55 was demonstrated recently that after stimulation with anti-CD3 these cells produce C3, and
56
57
58
59
60

1
2
3 iC3b fragments become deposited on the cell surface (38). T cell bound iC3b was shown to
4
5 act as a costimulatory molecule by interacting with CR3 and probably CR4 receptors
6
7 expressed by MDCs, and significantly enhanced autologous T cell proliferation.
8
9

14 **CR1 (CD35) and CR2 (CD21)**

10
11
12
13
14
15
16
17
18 As mentioned earlier, covalently fixed C3b and its proteolytic cleavage fragments iC3b and
19
20 C3d(g) serve as ligands to complement receptors CR1 (CD35), CR2 (CD21), CR1g and
21
22 members of the β 2-integrin family: CR3 (CD11b/CD18) and CR4 (CD11c/CD18),
23
24 respectively (*Fig. 1*). These receptors are widely distributed on different cell types and exert a
25
26 great variety of biological functions. Although the overall structure of these receptors is
27
28 identical or very similar in men and mice, it has to be emphasized that regarding their tissue
29
30 distribution and function there are significant differences between these two species (*Table 1*).
31
32
33

34 In mice both CR1 and CR2 are encoded by the same gene (*Cr2*), and alternative
35
36 splicing gives rise to the two protein products which have identical functions (61). Mouse
37
38 CR1 comprises 21 Short Consensus Repeats (SCRs) while mouse CR2 is identical to this
39
40 protein, except that it lacks the first 6 SCRs. In humans two separate genes (*Cr1 and Cr2*)
41
42 encode for CR1 and CR2, producing two different cell membrane proteins with distinct tissue
43
44 distribution and functions (62) (*Table 1, Fig. 4*).
45
46

47 In humans CR1 is expressed by polymorphonuclear (PMN) leukocytes, monocytes,
48
49 macrophages, B and T cells, follicular dendritic cells (FDCs) and erythrocytes, while in mice
50
51 CR1/2 expression is restricted to B cells and FDCs (63, 64) and appears on activated T cells
52
53 (32). Human CR1 is an approximately 200 kDa single chain transmembrane glycoprotein with
54
55 a short cytoplasmic tail. In the most common human allotype the extracellular portion of the
56
57
58
59
60

1
2
3 molecule is composed of 30 SCRs. CR1 binds activated fragments of C3 and C4, such as C3b
4 and C4b and with lower affinity, iC3b. It belongs to the complement regulators and possesses
5 decay accelerating activity for the C3/C5-convertases of the classical and alternative
6 pathways. Additionally, it serves as a cofactor for Factor I-mediated cleavage of C3b, thus
7 blocks further activation of the complement cascade. Its further important activities include
8 phagocytosis by macrophages and granulocytes, transport of C3-opsonized immune
9 complexes by erythrocytes and maintenance of immunological memory by FDCs (reviewed
10 in: (65). Recently CR1 has been demonstrated to bind EBV on human B cells (66). On T cells
11 inhibition of CR1-mediated functions were demonstrated by Wagner et al. (67) and CR1 was
12 found to be involved in the generation of Treg cells (68). As will be discussed later, CR1
13 expressed by human B lymphocytes exerts a strong inhibitory effect (69, 70) (*Table 1*).

14
15
16
17
18
19
20
21
22
23
24
25
26
27
28
29
30
31
32
33
34
35
36
37
38
39
40
41
42
43
44
45
46
47
48
49
50
51
52
53
54
55
56
57
58
59
60

CR2 is a surface glycoprotein expressed on B cells, FDCs, epithelial cells and a subset
of T cells (63, 71). In both species, CR2 appears either as a subunit of the CD19/CD21/CD81
complex, or associated with CR1 (26, 72). In the trimolecular complex CR2 functions as the
ligand binding unit whereas CD19 mediates signal transduction (73). A further functional link
between human CR1 and CR2 might be provided by the co-factor activity of CR1, which in
the presence of Factor I facilitates the production of C3d, the ligand for CR2. Although CR1
and CR2 can be found associated on normal human B cells, each receptor can cap
independently (74).

Besides promoting antigen (Ag)-induced B cell activation, CR2 was also proven to
rescue peripheral B cells from apoptosis and to enhance Ag processing and presentation of
C3d-bound particles (75). In addition, FDC-expressed CR2 is essential for trapping C3
fragment-tagged Ags – similarly to CR1 – thereby contributes to the maintenance of
immunological memory and development of long-term B cell responses. CR2 is the receptor

1
2
3 for EBV on human B cells (76), and has been demonstrated to serve also as the receptor for
4
5 CD23 (77).
6
7
8
9

10 11 Murine CR1 and CR2 enhances humoral immune response 12

13
14
15
16 The immunomodulatory role of CR1 and CR2 on B lymphocytes was mainly studied using
17
18 animal systems. In 1974 Pepys found an impaired humoral immune response to both T cell
19
20 dependent and T cell independent antigens in mice deficient in C3 (78). Later it has been
21
22 shown that mice lacking CR1 and CR2, the receptors which interact with the C3-derived
23
24 fragments, do not develop antibody response (79, 80). In the same year the adjuvant effect of
25
26 C3d was proven by Dempsey et al. Employing the recombinant model antigen, hen egg
27
28 lysozyme (HEL) coupled to two or three copies of C3d was 1000–10.000-fold more
29
30 immunogenic than HEL alone (81). It is important to note however, that the construct
31
32 containing only one copy of C3d was tolerogenic *in vivo*. This might be explained by earlier
33
34 findings which demonstrate that soluble C3d controls the growth of activated B cells (82) in
35
36 contrast to polyvalent C3-fragments (83).
37
38
39

40 As a B cell receptor (BCR) independent function, targeting antigen to murine CR1 and
41
42 CR2 either by single chain antibody fragments or by chemically engineered whole antibodies
43
44 was shown to enhance the efficiency of antigen presentation (84, 85). Targeting of antigen-
45
46 bound C3b and C4b and its role in antigen presentation were proven in human systems as
47
48 well, using EBV-transformed lymphoblastoid cells (86, 87). The role of CR1 and CR2 in
49
50 murine B cell differentiation and function has been extensively reviewed elsewhere (88-90).
51
52
53
54
55
56
57
58
59
60

Human CR1 and CR2 exert opposing functions

As mentioned earlier there are significant differences between the expression and function of human and murine CR1 and CR2, therefore results obtained in mouse systems should be translated to humans with great caution. In the following section the immunomodulatory role of complement receptors expressed by human B cells will be discussed with particular attention to CR1, which down-modulates B cell responses in contrast to the activatory CR2.

In contrast to mouse B cells, where ligation of BCR to CR1 and CR2 or clustering complement receptors by multimeric ligands strongly elevates antibody production, the response of human B cells to ligation of CR1 and CR2 is much more diverse (*Fig.4*). Regarding the role of CR2 on human B cells results are in line with data on mouse B cells. Namely, depending on whether C3d, the natural ligand is presented in soluble or crosslinked form, CR2 can mediate either negative or positive signals (91-93). Antibody to CR2 was shown to induce proliferation of human B cells in the presence of T cells (94, 95) and ligand binding to CD21 was found to augment BCR induced activation via a selective, c-fos dependent signaling pathway (96). Nevertheless, it has to be pointed out that a remarkable CR2-dependent enhancement of the antibody response which was found in mouse systems, has not been demonstrated in any human systems studied so far.

Concerning the function of CR1 on human B cells, results of studies carried out between 1980 and 1990 are much more controversial. In experiments using F(ab')₂ fragments of antibodies reacting with CR1, Daha et al. showed enhancement of non-specific Ig-production when the cells were stimulated with a suboptimal dose of pokeweed mitogen (PWM) in the presence of T cells (97). Under these conditions monomeric C3b was ineffective. Later Weiss et al. found that CR1-specific monoclonal antibodies did not affect nonspecific B cell proliferation but elevated specific antibody production in the presence of T

1
2
3 cell-derived factors and suboptimal antigen dose (98). Tedder et al. however found no effect
4
5 of CR1-specific antibodies in a similar experimental system (99). In contrast to these data,
6
7 employing the natural ligand Berger and Fleisher had shown that C3b inhibited PWM-
8
9 induced Ig-production of human B cells (100). Similarly, Tsokos et al. also demonstrated the
10
11 negative modulatory effect of C3b in conditions where the participation of other
12
13 immunoregulatory cells could be excluded (101).
14

15
16 Assuming that these controversial results are most probably due to the mixed cell
17
18 populations and the different experimental conditions used by the authors, we decided to
19
20 reinvestigate the role of CR1 in human B cell functions. We used highly purified B cells
21
22 which were activated suboptimally via the BCR crosslinking in serum-free culture conditions,
23
24 and for CR1 ligation C3b, the natural ligand was applied in a multimeric form (69). We
25
26 demonstrated that clustering CR1 inhibited proliferation and Ca^{2+} -response of human B cells,
27
28 and proved that this inhibitory activity also occurs in the presence of the costimulatory
29
30 cytokines IL-2 and IL-15. These results give evidence that human CR1 exerts an opposite
31
32 effect to CR2, thus provides an additional level of regulation of humoral immunity (*Fig.4*).
33
34 The therapeutic potential of CR1 inhibition was proven in a humanized SCID model, where
35
36 selective co-cross-linking native DNA-specific BCR with the inhibitory CR1 suppressed B
37
38 cell proliferation and autoantibody production (102). The inhibitory effect of CR1 in
39
40 autoimmune patients (70) will be detailed in the next section.
41
42
43
44
45
46
47
48

49 Human CR1 and CR2 are expressed differentially in various B cell subsets
50

51
52
53
54 Based on the opposing functions of human CR1 and CR2 we assumed that their expression is
55
56 different in various B cell subsets. Indeed, employing tonsil-derived B cells, where
57
58
59
60

1
2
3 complement receptor expression on germinal center (GC) B cells can be assessed in addition
4
5 to the subpopulations present in blood, we have found that CR1 and CR2 expression changes
6
7 oppositely during B cell differentiation. While CD19⁺, CD27⁻ naïve B cells upregulate their
8
9 inhibitory CR1 during differentiation to CD19⁺, CD27⁺ memory cells, the expression of the
10
11 activatory CR2 receptor is downregulated (70). Similarly to plasmablasts, both CR1 and CR2
12
13 expression are markedly reduced on CD27⁺, CD10⁺, CD38⁺ GC B cells (our unpublished
14
15 observation).

16
17
18 We presume that the contrasting expression of CR1 and CR2 during human B cell
19
20 differentiation have an essential role in the maintenance of peripheral B cell tolerance. The
21
22 significantly decreased expression of CR1 - as well as the other main inhibitory receptor,
23
24 FcγRIIb - on GC B cells may support the intensive proliferation of centroblasts and the
25
26 differentiation of centrocytes into memory cells or plasmablasts. Alternatively, decreased
27
28 appearance of both CR1 and CR2 on these B cell subsets can be the consequence of receptor
29
30 internalization due to the continuous Ag screening and uptake of complement-tagged ligands.
31
32 Later, however, the elevated expression of CR1 on memory B cells with parallel down-
33
34 regulation of the activatory CR2 may prevent the activation and differentiation of low-affinity,
35
36 non-specific B cells into antibody secreting plasma cells and restrict the immune response
37
38 only to Ag-specific B cell clones, preventing autoimmunity (*Fig.5*). The important question
39
40 still needs to be answered: how the ligands – namely C3b and C3dg - are generated and
41
42 offered to B cells at the different stages? We think that it is a complex process, where antigen-
43
44 bound C3-fragments, local C3-production by different cells, C3-fragments present in ICs
45
46 bound to FDCs, the presence or lack of regulatory proteins on the membrane of various cells,
47
48 etc., might all play a role.
49
50
51
52
53

54
55 Expression and function of CR1 and CR2 on human B cells in autoimmune conditions
56
57
58
59
60

1
2
3 In autoimmune conditions - including systemic lupus erythematosus (SLE) and rheumatoid
4 arthritis (RA) - ICs containing the autoantigen, autoantibody and C3-fragments are not
5 properly cleared from circulation. Hence their excessive binding to B cells together with the
6 observed abnormal expression of Fc γ RIIb, CR1 and CR2 on the surface of human B cells may
7 cause imbalance in the regulation of B cell functions, breaking self-tolerance and inducing
8 autoreactivity.
9

10
11 Although the reduced expression of CRs on erythrocytes as well as on leukocytes of
12 autoimmune patients is known for long (103-105), the distribution of CR1 and CR2 on
13 various B cell subsets in autoimmune conditions has been studied only recently (70, 106). Our
14 group assessing CR1 and CR2 expression on different B lymphocyte subpopulations of
15 healthy donors and SLE patients revealed that under physiological conditions, CD27⁺CD19⁺
16 memory B cells express higher level of CR1 than CD27⁻CD19⁺ naïve cells. Its expression
17 however is markedly decreased in both IgM⁺ and switched memory B cells of SLE patients.
18 In contrast to CR1 however, no difference was found in the expression of CR2 between naïve
19 and memory B cells of healthy individuals, and the reduced receptor expression affected all B
20 cell populations of the patients (106). In the case of RA patients, although the expression of
21 CR1 and CR2 was reduced on all tested B cell subpopulations, the change in the expression
22 pattern during the differentiation of B lymphocytes was maintained. This finding points to a
23 strict regulation of complement receptors in RA, which seems to be missing in other B cell-
24 mediated autoimmune diseases, such as SLE.
25
26
27
28
29
30
31
32
33
34
35
36
37
38
39
40
41
42
43
44
45
46

47 Despite the reduced expression of CR1 in autoimmune patients, we have found that its
48 inhibitory capacity is maintained and reduces both B cell proliferation and antibody secretion
49 similarly to healthy individuals (70). Similar results were obtained investigating the function
50 of CR2 on B cells of SLE patients, where despite the fact that B cells were found to express
51 half as many surface CR2 as normal B lymphocytes, the Ca²⁺ response and the percentage of
52
53
54
55
56
57
58
59
60

1
2
3 responding cells were significantly increased after co-ligation of BCR and CR2 (107). These
4
5 observations suggest that down-regulation of IC-binding receptors on B cells may contribute
6
7 to the induction of autoimmunity rather than affecting disease severity. Indeed, CR1 and CR2
8
9 have been proven to play an essential role in the development of tolerance by presentation of
10
11 self-antigens to autoreactive B cells at the immature stage (108). At this stage encounter of B
12
13 cells with autoantigens leads to negative selection, thus defect in retention of self-antigens due
14
15 to abnormal expression of CR1 and CR2 may cause impaired deletion and escape of anergic,
16
17 self-reactive B cell clones to the periphery. This hypothesis is supported by the fact that
18
19 CD21^{low/-} B lymphocytes have been found enriched in patients with autoimmune diseases
20
21 (109) and these cells also fail to express CD35 (our unpublished results). CD21^{low/-} B cells are
22
23 refractory to most stimulation and – instead of being eliminated – they remain in the blood of
24
25 autoimmune patients where infections or abnormal clearance of ICs may create a favourable
26
27 environment for their activation, leading to break of B cell tolerance and development of
28
29 autoimmunity.
30
31
32
33

34 Although the exact mechanism is still unresolved, these data suggest that concurrent
35
36 changes in the expression and/or function of IC-binding receptors on B lymphocytes and other
37
38 cell types may lead to aberrant B cell activation as well as Ag retention on B cells and FDCs,
39
40 resulting in autoantibody secretion and induction of autoimmunity.
41
42
43
44
45
46

47 **CR3 (CD11b/CD18) and CR4 (CD11c/CD18)**

48
49
50
51 Complement receptor CR3 (CD11b/CD18, also known as Mac-1; α M β 2) and CR4
52
53 (CD11c/CD18, also known as p150, 95; α X β 2) belong to the family of β 2 integrins. These
54
55 molecules are heterodimeric transmembrane glycoproteins consisting of a non-covalently
56
57 coupled alpha and beta polypeptide chain, which have fundamental role in cell-cell, cell-
58
59
60

1
2
3 extracellular matrix connections and locomotion. The 18 different α and 8 β -chains combine
4
5 into 24 integrins that are classified based on their β chains (110, 111). In immunology, special
6
7 attention is drawn to the leukocyte specific β 2 family, which has four members; the well-
8
9 known LFA-1 (CD11a/CD18), the complement receptors CR3 (CD11b/CD18) and CR4
10
11 (CD11c/CD18) and CD11d/CD18.
12

13
14 Human CR3 and CR4 are closely related integrins; their α -chains share 87% identity
15
16 in amino acid sequence in the extracellular part, and 56% in the short intracellular tail (112,
17
18 113). The functional regions in human CD11b and CD11c are also shared with mouse CD11b
19
20 (114).
21

22
23 The common ligands of CR3 and CR4 include iC3b, the inactivated form of C3,
24
25 fibrinogen and ICAM-1 (115-117). In both receptors the I-domain of the α -chain is
26
27 responsible for ligand binding, although the β chain also plays an important role in
28
29 maintaining the proper conformation for ligand binding (111, 118-123). By mapping the
30
31 binding sites for various ligands Zhang et al. revealed that the fibrinogen binding site is
32
33 different from the sequences which interact with iC3b (124). CR3 has an additional lectin type
34
35 ligand binding site that can interact with the yeast product β -glucan and has an important role
36
37 in effective tumour killing (125). Both CR3 and CR4 can bind LPS and several pathogens
38
39 directly (117, 126-130).
40
41

42
43 The tissue distribution of CR3 and CR4 is different in men and mice (*Table 1*). In
44
45 humans CR3 and CR4 are mainly expressed on monocytes, macrophages, dendritic cells,
46
47 PMNs and natural killer (NK) cells, and recently they have been detected on certain B
48
49 lymphocyte populations as well (114, 131-133). In mice, expression of CD11c is far more
50
51 limited, therefore it is used as a marker of mouse DCs.
52
53
54
55
56
57
58
59
60

Dissecting the functions of CR3 and CR4

The similarities between CR3 and CR4 in structure and ligand specificity makes the study of their individual role extremely challenging. Furthermore, the competition between the ligands for CR3 and CR4, which exists in humans is lacking in mice due to the above mentioned differences in the receptors' tissue distribution. Considering these facts it can be easily accepted that results obtained in mouse experiments cannot be simply translated to humans. Nevertheless, studies in human systems are also hindered by technical obstacles. Namely, when the function of CR3 and CR4 is investigated on phagocytes, both receptors are targeted at the same time, therefore the outcome of the experiment cannot be clearly associated only with one of them. These difficulties are further increased by the high intracellular pool and rapid recycling of integrins (134, 135). Due to these features, blocking one receptor with monoclonal antibodies to study the function of the other is challenging, because antibody covered integrins may translocate and reside inside the cell, while the unoccupied ones come to the surface, thereby lower the efficiency of receptor blocking. Finally, the possible proximity of CR3 and CR4 in the cell membrane may also be a source of false results caused by steric hindrance between adjacent receptors having bound antibodies or ligands.

The best-known and most important function of CR3 is the phagocytosis of iC3b opsonized pathogens and apoptotic cells (136-139). The latter process is an immunologically silent mechanism, which is important in the induction of tolerance (51-53, 140). Based on the similarities between human CR3 and CR4 in structure, ligand specificity and expression, earlier it was hypothesized that CR4 is involved in similar processes as CR3 – most importantly in the phagocytosis of iC3b opsonized particles. The first indication of distinct roles for CR3 and CR4 came from the studies of Georgakopoulos et al., who showed that CD11c and CD11b are differentially involved in adhesion of human monocytes to fibrinogen

1
2
3 (141). Later Pliyev et al. proved that phagocytosis of iC3b opsonized particles by PMNs is
4
5 dependent on CR1 and CR3, but not on CR4 (142).
6

7 The function of CR4 has not been studied intensively so far most probably due to lack
8
9 of specific monoclonal antibodies. Moreover, expression of CR4 is limited in mice, and in
10
11 humans its expression level in some cell type is lower compared to CR3. Nevertheless,
12
13 interesting studies performed in mice draw the attention to the importance of discriminating
14
15 between CR3 and CR4. While the anti-inflammatory effect of CR3 is widely accepted, CR4
16
17 seems to have rather a pro-inflammatory role (143, 144).
18
19

20 CR3 and CR4 are accepted to play important roles in pathological conditions and it is
21
22 known for long that inflammation can alter the expression level of these receptors. Due to
23
24 mutations in the common β -chain, CR3 and CR4 are associated with leukocyte adhesion
25
26 deficiency (LAD), an autosomal recessive disorder characterised by recurrent bacterial
27
28 infections. Much attention is drawn to the role of CR3 in the pathogenesis of autoimmune
29
30 diseases such as SLE and RA, and recently a single nucleotide polymorphism in the CD11b
31
32 chain (rs1143679) has been identified as a risk factor in SLE (145). Although its function has
33
34 not been described so far, CD11c was found to appear on the B cells of lupus prone mice and
35
36 in human leukemic patients (146, 147).
37
38
39
40
41
42
43
44

45 CR3 is the dominant receptor in opsonic phagocytosis by human DCs
46
47
48

49 Our strong hypotheses is that due to an evolutionary thrift, CR3 and CR4 play different roles
50
51 in human cell types. Therefore we set out to dissect their functions using human monocyte-
52
53 derived dendritic cells (MDCs), which express these two integrins in approximately equal
54
55 amounts. Studying the interaction of MDCs with HIV-1 it was found that C3b-opsonized
56
57
58
59
60

1
2
3 virus particles caused up to ten-fold higher productive infection than the non-opsonized ones.
4
5 This significantly higher infection rate could be reduced to background level by blocking the
6
7 ligand binding site of CD11b (138). These results demonstrate that CR3 is the dominant
8
9 receptor to mediate the uptake of iC3b opsonized HIV by MDCs, and this receptor directs
10
11 opsonized HIV to cellular compartments which are favourable for productive infection. The
12
13 prominent role of CR3 over CR4 was also demonstrated in the phagocytosis of iC3b
14
15 opsonized yeast and bacterial particles by MDCs (148) (*Fig. 6*). These results were confirmed
16
17 by using siRNA; when downregulation of CD11b blocked the uptake of microbes by MDCs,
18
19 while silencing CD11c had no effect at all. Although it has not been proven so far, one
20
21 possible explanation for the differential function of CR3 and CR4 in these experiments is that
22
23 the cytoskeletal association and mobility of the two receptors is different (113).
24
25
26
27
28
29
30

31 CR3 and CR4 are differentially involved in adhesion of human DCs
32
33
34

35 Mouse models revealed an important role for CR3 expressed by DCs in adhesion and
36
37 cytokine production upon binding to fibrinogen (149, 150). These data, however, cannot be
38
39 simply applied to the human system, where both CR3 and CR4 are expressed on several cell
40
41 types which bind fibrinogen (151). Furthermore, integrin expression has been shown to be
42
43 regulated differentially in the two species (152). In the study of Thacker et al. human MDCs
44
45 were found to bind fibrinogen and secrete cytokines in a CD18-dependent manner, but the
46
47 role of CR3 and CR4 could not be separated in these experiments (153). Georgakopoulos et
48
49 al. showed that the contribution of these integrins to fibrinogen binding is dependent on the
50
51 experimental conditions (141). We set out to dissect the role of CR3 and CR4 in adhesion,
52
53 employing human monocyte derived macrophages (MDMs) and DCs and antibodies specific
54
55 to the ligand binding site of the receptors. We found that CR4 ligation significantly decreases
56
57
58
59
60

1
2
3 the number of adhered cells and the force of adhesion in the case of both cell types, and
4
5 inhibits macrophage spreading. These data show that strong adhesion to fibrinogen is mainly
6
7 mediated by CR4, while the role of CR3 is negligible in this process (accepted in PLOS ONE,
8
9 2016) (*Fig. 6*).

16 **Conclusions, perspectives**

17
18 We have reviewed new aspects of complement mediated functions and exposed the
19
20 importance of C3-derived fragments not only in bridging innate and adaptive immunity, but
21
22 also in regulating immune responses.
23

24
25 We are convinced that in addition to valuable data obtained in animal studies it is
26
27 important to investigate human systems and understand the differences of complement
28
29 functioning between men and mice. With the help of new methods to isolate and characterize
30
31 various subpopulations of human T and B lymphocytes as well as macrophages and dendritic
32
33 cells we shall be able to reveal the expression and role of various complement receptors at
34
35 different developmental stages of these cells. Due to the complexity of signals integrated
36
37 when B cells engage immune complexes bearing diverse complement fragments, the opposing
38
39 role of CR1 and CR2 on human B cells needs further investigations, both in physiological and
40
41 pathological conditions.
42
43

44
45 Since several immunological processes take place in tissues where hepatocyte-derived
46
47 complement proteins might not be available, locally produced complement components and
48
49 their receptors are most likely involved in modulating cellular responses *in situ*. Recognition
50
51 of further details of these processes will help better understand physiological and pathological
52
53 processes.
54
55

58 **Acknowledgements**

We thank József Prechl and István Kurucz for their helpful comments on the manuscript.

This work was supported by the Hungarian National Science Fund (OTKA) grants K112011 and K104838, and by the Hungarian Academy of Sciences.

References

1. Colten HR. Molecular biology of complement. *BioEssays : news and reviews in molecular, cellular and developmental biology*.1986;4:249-254.
2. Erdei A, Fust G, Gergely J. The role of C3 in the immune response. *Immunology today*.1991;12:332-337.
3. Andrews PA, Zhou W, Sacks SH. Tissue synthesis of complement as an immune regulator. *Molecular medicine today*.1995;1:202-207.
4. Klos A, Wende E, Wareham KJ, Monk PN. International Union of Basic and Clinical Pharmacology. [corrected]. LXXXVII. Complement peptide C5a, C4a, and C3a receptors. *Pharmacological reviews*.2013;65:500-543.
5. Sacks SH. Complement fragments C3a and C5a: the salt and pepper of the immune response. *European journal of immunology*.2010;40:668-670.
6. Gros P, Milder FJ, Janssen BJ. Complement driven by conformational changes. *Nature reviews Immunology*.2008;8:48-58.
7. Law SK, Levine RP. Interaction between the third complement protein and cell surface macromolecules. *Proceedings of the National Academy of Sciences of the United States of America*.1977;74:2701-2705.
8. Helmy KY, et al. CRlg: a macrophage complement receptor required for phagocytosis of circulating pathogens. *Cell*.2006;124:915-927.
9. Sim RB, Twose TM, Paterson DS, Sim E. The covalent-binding reaction of complement component C3. *The Biochemical journal*.1981;193:115-127.
10. Gadjeva M, Dodds AW, Taniguchi-Sidle A, Willis AC, Isenman DE, Law SK. The covalent binding reaction of complement component C3. *Journal of immunology*.1998;161:985-990.
11. Nelson RA, Jr. The immune-adherence phenomenon; an immunologically specific reaction between microorganisms and erythrocytes leading to enhanced phagocytosis. *Science*.1953;118:733-737.
12. Fearon DT. Identification of the membrane glycoprotein that is the C3b receptor of the human erythrocyte, polymorphonuclear leukocyte, B lymphocyte, and monocyte. *The Journal of experimental medicine*.1980;152:20-30.
13. Bellinger-Kawahara C, Horwitz MA. Complement component C3 fixes selectively to the major outer membrane protein (MOMP) of *Legionella pneumophila* and mediates phagocytosis of liposome-MOMP complexes by human monocytes. *The Journal of experimental medicine*.1990;172:1201-1210.
14. Puentes SM, Sacks DL, da Silva RP, Joiner KA. Complement binding by two developmental stages of *Leishmania major* promastigotes varying in expression of a surface lipophosphoglycan. *The Journal of experimental medicine*.1988;167:887-902.
15. Schlesinger LS, Horwitz MA. Phenolic glycolipid-1 of *Mycobacterium leprae* binds complement component C3 in serum and mediates phagocytosis by human monocytes. *The Journal of experimental medicine*.1991;174:1031-1038.

16. Mueller-Ortiz SL, Wanger AR, Norris SJ. Mycobacterial protein HbhA binds human complement component C3. *Infection and immunity*.2001;69:7501-7511.
17. Karnchanaphanurach P, et al. C3b deposition on human erythrocytes induces the formation of a membrane skeleton-linked protein complex. *The Journal of clinical investigation*.2009;119:788-801.
18. Mold C, Nemerow GR, Bradt BM, Cooper NR. CR2 is a complement activator and the covalent binding site for C3 during alternative pathway activation by Raji cells. *Journal of immunology*.1988;140:1923-1929.
19. Praz F, Karsenty G, Binet JL, Lesavre P. Complement alternative pathway activation by chronic lymphocytic leukemia cells: its role in their hepatosplenic localization. *Blood*.1984;63:463-467.
20. Marquart HV, Gronbaek K, Christensen BE, Svehag SE, Leslie RG. Complement activation by malignant B cells from patients with chronic lymphocytic leukaemia (CLL). *Clinical and experimental immunology*.1995;102:575-581.
21. Sissons JG, Oldstone MB, Schreiber RD. Antibody-independent activation of the alternative complement pathway by measles virus-infected cells. *Proceedings of the National Academy of Sciences of the United States of America*.1980;77:559-562.
22. Ramos OF, Sarmay G, Klein E, Yefenof E, Gergely J. Complement-dependent cellular cytotoxicity: lymphoblastoid lines that activate complement component 3 (C3) and express C3 receptors have increased sensitivity to lymphocyte-mediated lysis in the presence of fresh human serum. *Proceedings of the National Academy of Sciences of the United States of America*.1985;82:5470-5474.
23. Erdei A, Fust G, Gyenes J, Fabry Z, Gergely J. C3b acceptors on human peripheral blood mononuclear cells; characterization and functional role. *Immunology*.1983;49:423-430.
24. Marquart HV, Svehag SE, Leslie RG. CR2 is the primary acceptor site for C3 during alternative pathway activation of complement on human peripheral B lymphocytes. *Journal of immunology*.1994;153:307-315.
25. Maison CM, Villiers CL, Colomb MG. Secretion, cleavage and binding of complement component C3 by the human monocytic cell line U937. *The Biochemical journal*.1989;261:407-413.
26. Matsumoto M, Seya T. Homologous C3 deposition and homotypic cell adhesion in a human myeloid cell line, P39. *European journal of immunology*.1993;23:2270-2278.
27. di Renzo L, et al. C3 molecules internalize and enhance the growth of Lewis lung carcinoma cells. *Immunobiology*.1999;200:92-105.
28. Law SK, Dodds AW. The internal thioester and the covalent binding properties of the complement proteins C3 and C4. *Protein science : a publication of the Protein Society*.1997;6:263-274.
29. Erdei A, Kohler V, Schafer H, Burger R. Macrophage-bound C3 fragments as adhesion molecules modulate presentation of exogenous antigens. *Immunobiology*.1992;185:314-326.
30. Olesen EH, Johnson AA, Damgaard G, Leslie RG. The requirement of localized, CR2-mediated, alternative pathway activation of complement for covalent deposition of C3 fragments on normal B cells. *Immunology*.1998;93:177-183.
31. Bajtay Z, Kacani L, Erdei A, Dierich MP. HIV-1 induces human monocyte-derived macrophages to produce C3 and to fix C3 on their surface. *Journal of leukocyte biology*.1998;63:463-468.
32. Kerekes K, Prechl J, Bajtay Z, Jozsi M, Erdei A. A further link between innate and adaptive immunity: C3 deposition on antigen-presenting cells enhances the proliferation of antigen-specific T cells. *International immunology*.1998;10:1923-1930.
33. Kerekes K, Cooper PD, Prechl J, Jozsi M, Bajtay Z, Erdei A. Adjuvant effect of gamma-inulin is mediated by C3 fragments deposited on antigen-presenting cells. *Journal of leukocyte biology*.2001;69:69-74.
34. Papp K, et al. B lymphocytes and macrophages release cell membrane deposited C3-fragments on exosomes with T cell response-enhancing capacity. *Molecular immunology*.2008;45:2343-2351.

- 1
- 2
- 3 35. Nielsen CH, Pedersen ML, Marquart HV, Prodinge WM, Leslie RG. The role of complement
- 4 receptors type 1 (CR1, CD35) and 2 (CR2, CD21) in promoting C3 fragment deposition and membrane
- 5 attack complex formation on normal peripheral human B cells. *European journal of*
- 6 *immunology*.2002;32:1359-1367.
- 7 36. Sandor N, Pap D, Prechl J, Erdei A, Bajtay Z. A novel, complement-mediated way to enhance
- 8 the interplay between macrophages, dendritic cells and T lymphocytes. *Molecular*
- 9 *immunology*.2009;47:438-448.
- 10 37. Erdei A, Benczur M, Fabry Z, Dierich MP, Gergely J. C3 cleaved by membrane proteases binds
- 11 to C3b acceptors expressed on concanavalin A-stimulated human lymphocytes and enhances
- 12 antibody-dependent cellular cytotoxicity. *Scandinavian journal of immunology*.1984;20:125-131.
- 13 38. Torok K, Kremlitzka M, Sandor N, Toth EA, Bajtay Z, Erdei A. Human T cell derived, cell-bound
- 14 complement iC3b is integrally involved in T cell activation. *Immunology letters*.2012;143:131-136.
- 15 39. Barro CD, Villiers CL, Colomb MG. Covalent binding of non-proteolysed C3 to Jurkat T cells.
- 16 *Molecular immunology*.1991;28:711-717.
- 17 40. Ghebrehiwet B, Medicus RG, Muller-Eberhard HJ. Potentiation of antibody-dependent cell-
- 18 mediated cytotoxicity by target cell-bound C3b. *Journal of immunology*.1979;123:1285-1288.
- 19 41. Kemper C, Atkinson JP. T-cell regulation: with complements from innate immunity. *Nature*
- 20 *reviews Immunology*.2007;7:9-18.
- 21 42. Heeger PS, Kemper C. Novel roles of complement in T effector cell regulation.
- 22 *Immunobiology*.2012;217:216-224.
- 23 43. Zhou W, Peng Q, Li K, Sacks SH. Role of dendritic cell synthesis of complement in the
- 24 allospecific T cell response. *Molecular immunology*.2007;44:57-63.
- 25 44. van der Touw W, Cravedi P, Kwan WH, Paz-Artal E, Merad M, Heeger PS. Cutting edge:
- 26 Receptors for C3a and C5a modulate stability of alloantigen-reactive induced regulatory T cells.
- 27 *Journal of immunology*.2013;190:5921-5925.
- 28 45. Raposo G, et al. B lymphocytes secrete antigen-presenting vesicles. *The Journal of*
- 29 *experimental medicine*.1996;183:1161-1172.
- 30 46. Reis ES, Barbuto JA, Isaac L. Complement components, regulators and receptors are
- 31 produced by human monocyte-derived dendritic cells. *Immunobiology*.2007;212:151-157.
- 32 47. van Kooten C, et al. Complement production and regulation by dendritic cells: molecular
- 33 switches between tolerance and immunity. *Molecular immunology*.2008;45:4064-4072.
- 34 48. Zhou W, Patel H, Li K, Peng Q, Villiers MB, Sacks SH. Macrophages from C3-deficient mice
- 35 have impaired potency to stimulate alloreactive T cells. *Blood*.2006;107:2461-2469.
- 36 49. Ghannam A, et al. Human C3 deficiency associated with impairments in dendritic cell
- 37 differentiation, memory B cells, and regulatory T cells. *Journal of immunology*.2008;181:5158-5166.
- 38 50. Ehrchiou D, Xiong Y, Xu G, Chen W, Shi Y, Zhang L. CD11b facilitates the development of
- 39 peripheral tolerance by suppressing Th17 differentiation. *The Journal of experimental*
- 40 *medicine*.2007;204:1519-1524.
- 41 51. Schmidt J, Klemp C, Buchler MW, Marten A. Release of iC3b from apoptotic tumor cells
- 42 induces tolerance by binding to immature dendritic cells in vitro and in vivo. *Cancer immunology,*
- 43 *immunotherapy : CII*.2006;55:31-38.
- 44 52. Skoberne M, et al. The apoptotic-cell receptor CR3, but not alphavbeta5, is a regulator of
- 45 human dendritic-cell immunostimulatory function. *Blood*.2006;108:947-955.
- 46 53. Sohn JH, Bora PS, Suk HJ, Molina H, Kaplan HJ, Bora NS. Tolerance is dependent on
- 47 complement C3 fragment iC3b binding to antigen-presenting cells. *Nature medicine*.2003;9:206-212.
- 48 54. Ezekowitz RA, Sim RB, Hill M, Gordon S. Local opsonization by secreted macrophage
- 49 complement components. Role of receptors for complement in uptake of zymosan. *The Journal of*
- 50 *experimental medicine*.1984;159:244-260.
- 51 55. Baudino L, et al. C3 opsonization regulates endocytic handling of apoptotic cells resulting in
- 52 enhanced T-cell responses to cargo-derived antigens. *Proceedings of the National Academy of*
- 53 *Sciences of the United States of America*.2014;111:1503-1508.
- 54
- 55
- 56
- 57
- 58
- 59
- 60

- 1
 - 2
 - 3
 - 4
 - 5
 - 6
 - 7
 - 8
 - 9
 - 10
 - 11
 - 12
 - 13
 - 14
 - 15
 - 16
 - 17
 - 18
 - 19
 - 20
 - 21
 - 22
 - 23
 - 24
 - 25
 - 26
 - 27
 - 28
 - 29
 - 30
 - 31
 - 32
 - 33
 - 34
 - 35
 - 36
 - 37
 - 38
 - 39
 - 40
 - 41
 - 42
 - 43
 - 44
 - 45
 - 46
 - 47
 - 48
 - 49
 - 50
 - 51
 - 52
 - 53
 - 54
 - 55
 - 56
 - 57
 - 58
 - 59
 - 60
56. Strainic MG, et al. Locally produced complement fragments C5a and C3a provide both costimulatory and survival signals to naive CD4⁺ T cells. *Immunity*.2008;28:425-435.
57. Cravedi P, Leventhal J, Lakhani P, Ward SC, Donovan MJ, Heeger PS. Immune cell-derived C3a and C5a costimulate human T cell alloimmunity. *American journal of transplantation : official journal of the American Society of Transplantation and the American Society of Transplant Surgeons*.2013;13:2530-2539.
58. Li K, et al. Cyclic AMP plays a critical role in C3a-receptor-mediated regulation of dendritic cells in antigen uptake and T-cell stimulation. *Blood*.2008;112:5084-5094.
59. Pantazis P, Kalyanaraman VS, Bing DH. Synthesis of the third component of complement (C3) by lectin-activated and HTLV-infected human T-cells. *Molecular immunology*.1990;27:283-289.
60. Cardone J, et al. Complement regulator CD46 temporally regulates cytokine production by conventional and unconventional T cells. *Nature immunology*.2010;11:862-871.
61. Kurtz CB, O'Toole E, Christensen SM, Weis JH. The murine complement receptor gene family. IV. Alternative splicing of Cr2 gene transcripts predicts two distinct gene products that share homologous domains with both human CR2 and CR1. *Journal of immunology*.1990;144:3581-3591.
62. Jacobson AC, Weis JH. Comparative functional evolution of human and mouse CR1 and CR2. *Journal of immunology*.2008;181:2953-2959.
63. Holers VM. Complement and its receptors: new insights into human disease. *Annual review of immunology*.2014;32:433-459.
64. Carroll MC. The role of complement and complement receptors in induction and regulation of immunity. *Annual review of immunology*.1998;16:545-568.
65. Sim RB, Malhotra V, Day AJ, Erdei A. Structure and specificity of complement receptors. *Immunology letters*.1987;14:183-190.
66. Ogembo JG, et al. Human complement receptor type 1/CD35 is an Epstein-Barr Virus receptor. *Cell reports*.2013;3:371-385.
67. Wagner C, et al. The complement receptor 1, CR1 (CD35), mediates inhibitory signals in human T-lymphocytes. *Molecular immunology*.2006;43:643-651.
68. Torok K, Dezso B, Bencsik A, Uzonyi B, Erdei A. Complement receptor type 1 (CR1/CD35) expressed on activated human CD4⁺ T cells contributes to generation of regulatory T cells. *Immunology letters*.2015;164:117-124.
69. Jozsi M, Prechl J, Bajtay Z, Erdei A. Complement receptor type 1 (CD35) mediates inhibitory signals in human B lymphocytes. *Journal of immunology*.2002;168:2782-2788.
70. Kremutzka M, Polgar A, Fulop L, Kiss E, Poor G, Erdei A. Complement receptor type 1 (CR1, CD35) is a potent inhibitor of B-cell functions in rheumatoid arthritis patients. *International immunology*.2013;25:25-33.
71. Watry D, et al. Infection of human thymocytes by Epstein-Barr virus. *The Journal of experimental medicine*.1991;173:971-980.
72. Tuveson DA, Ahearn JM, Matsumoto AK, Fearon DT. Molecular interactions of complement receptors on B lymphocytes: a CR1/CR2 complex distinct from the CR2/CD19 complex. *The Journal of experimental medicine*.1991;173:1083-1089.
73. Carter RH, Fearon DT. CD19: lowering the threshold for antigen receptor stimulation of B lymphocytes. *Science*.1992;256:105-107.
74. Tsokos GC, Thyphronitis G, Jack RM, Finkelman FD. Ligand-loaded but not free complement receptors for C3b/C4b and C3d co-cap with cross-linked B cell surface IgM and IgD. *Journal of immunology*.1988;141:1261-1266.
75. Carter RH, Fearon DT. Polymeric C3dg primes human B lymphocytes for proliferation induced by anti-IgM. *Journal of immunology*.1989;143:1755-1760.
76. Fingerboth JD, Weis JJ, Tedder TF, Strominger JL, Biro PA, Fearon DT. Epstein-Barr virus receptor of human B lymphocytes is the C3d receptor CR2. *Proceedings of the National Academy of Sciences of the United States of America*.1984;81:4510-4514.
77. Aubry JP, Pochon S, Graber P, Jansen KU, Bonnefoy JY. CD21 is a ligand for CD23 and regulates IgE production. *Nature*.1992;358:505-507.

- 1
- 2
- 3 78. Pepys MB. Role of complement in induction of antibody production in vivo. Effect of cobra
- 4 factor and other C3-reactive agents on thymus-dependent and thymus-independent antibody
- 5 responses. *The Journal of experimental medicine*.1974;140:126-145.
- 6 79. Ahearn JM, et al. Disruption of the Cr2 locus results in a reduction in B-1a cells and in an
- 7 impaired B cell response to T-dependent antigen. *Immunity*.1996;4:251-262.
- 8 80. Molina H, et al. Markedly impaired humoral immune response in mice deficient in
- 9 complement receptors 1 and 2. *Proceedings of the National Academy of Sciences of the United*
- 10 *States of America*.1996;93:3357-3361.
- 11 81. Dempsey PW, Allison ME, Akkaraju S, Goodnow CC, Fearon DT. C3d of complement as a
- 12 molecular adjuvant: bridging innate and acquired immunity. *Science*.1996;271:348-350.
- 13 82. Melchers F, Erdei A, Schulz T, Dierich MP. Growth control of activated, synchronized murine B
- 14 cells by the C3d fragment of human complement. *Nature*.1985;317:264-267.
- 15 83. Erdei A, Melchers F, Schulz T, Dierich M. The action of human C3 in soluble or cross-linked
- 16 form with resting and activated murine B lymphocytes. *European journal of*
- 17 *immunology*.1985;15:184-188.
- 18 84. Prechl J, et al. Targeting of influenza epitopes to murine CR1/CR2 using single-chain
- 19 antibodies. *Immunopharmacology*.1999;42:159-165.
- 20 85. Baiu DC, et al. Modulation of the humoral immune response by antibody-mediated antigen
- 21 targeting to complement receptors and Fc receptors. *Journal of immunology*.1999;162:3125-3130.
- 22 86. Arvieux J, Yssel H, Colomb MG. Antigen-bound C3b and C4b enhance antigen-presenting cell
- 23 function in activation of human T-cell clones. *Immunology*.1988;65:229-235.
- 24 87. Villiers MB, Villiers CL, Laharie AM, Marche PN. Amplification of the antibody response by
- 25 C3b complexed to antigen through an ester link. *Journal of immunology*.1999;162:3647-3652.
- 26 88. Prechl J, Erdei A. Immunomodulatory functions of murine CR1/2.
- 27 *Immunopharmacology*.2000;49:117-124.
- 28 89. Carroll MC. Complement and humoral immunity. *Vaccine*.2008;26 Suppl 8:I28-33.
- 29 90. Carroll MC, Isenman DE. Regulation of humoral immunity by complement.
- 30 *Immunity*.2012;37:199-207.
- 31 91. Bohnsack JF, Cooper NR. CR2 ligands modulate human B cell activation. *Journal of*
- 32 *immunology*.1988;141:2569-2576.
- 33 92. Kuraya M, Nilsson B, Nilsson-Ekdahl K, Klein E. C3d-mediated negative and positive signals on
- 34 the proliferation of human B cells separated from blood. *Immunology letters*.1990;26:51-58.
- 35 93. Tsokos GC, Lambris JD, Finkelman FD, Anastassiou ED, June CH. Monovalent ligands of
- 36 complement receptor 2 inhibit whereas polyvalent ligands enhance anti-Ig-induced human B cell
- 37 intracytoplasmic free calcium concentration. *Journal of immunology*.1990;144:1640-1645.
- 38 94. Nemerow GR, McNaughton ME, Cooper NR. Binding of monoclonal antibody to the Epstein
- 39 Barr virus (EBV)/CR2 receptor induces activation and differentiation of human B lymphocytes. *Journal*
- 40 *of immunology*.1985;135:3068-3073.
- 41 95. Frade R, et al. Enhancement of human B cell proliferation by an antibody to the C3d receptor,
- 42 the gp 140 molecule. *European journal of immunology*.1985;15:73-76.
- 43 96. Luxembourg AT, Cooper NR. Modulation of signaling via the B cell antigen receptor by CD21,
- 44 the receptor for C3dg and EBV. *Journal of immunology*.1994;153:4448-4457.
- 45 97. Daha MR, Bloem AC, Ballieux RE. Immunoglobulin production by human peripheral
- 46 lymphocytes induced by anti-C3 receptor antibodies. *Journal of immunology*.1984;132:1197-1201.
- 47 98. Weiss L, Delfraissy JF, Vazquez A, Wallon C, Galanaud P, Kazatchkine MD. Monoclonal
- 48 antibodies to the human C3b/C4b receptor (CR1) enhance specific B cell differentiation. *Journal of*
- 49 *immunology*.1987;138:2988-2993.
- 50 99. Tedder TF, Weis JJ, Clement LT, Fearon DT, Cooper MD. The role of receptors for complement
- 51 in the induction of polyclonal B-cell proliferation and differentiation. *Journal of clinical*
- 52 *immunology*.1986;6:65-73.
- 53 100. Berger M, Fleisher TA. Native C3 does not bind to the C3b receptor (CR1) of human blood B
- 54 lymphocytes or alter immunoglobulin synthesis. *Journal of immunology*.1983;130:1021-1023.
- 55
- 56
- 57
- 58
- 59
- 60

101. Tsokos GC, Berger M, Balow JE. Modulation of human B cell immunoglobulin secretion by the C3b component of complement. *Journal of immunology*.1984;132:622-626.
102. Kerekov NS, et al. Elimination of autoreactive B cells in humanized SCID mouse model of SLE. *European journal of immunology*.2011;41:3301-3311.
103. Iida K, Mornaghi R, Nussenzweig V. Complement receptor (CR1) deficiency in erythrocytes from patients with systemic lupus erythematosus. *The Journal of experimental medicine*.1982;155:1427-1438.
104. Wilson JG, Ratnoff WD, Schur PH, Fearon DT. Decreased expression of the C3b/C4b receptor (CR1) and the C3d receptor (CR2) on B lymphocytes and of CR1 on neutrophils of patients with systemic lupus erythematosus. *Arthritis and rheumatism*.1986;29:739-747.
105. Illges H, Braun M, Peter HH, Melchers I. Reduced expression of the complement receptor type 2 (CR2, CD21) by synovial fluid B and T lymphocytes. *Clinical and experimental immunology*.2000;122:270-276.
106. Isaak A, et al. Physiological up-regulation of inhibitory receptors Fc gamma RII and CR1 on memory B cells is lacking in SLE patients. *International immunology*.2008;20:185-192.
107. Mitchell JP, Enyedy EJ, Nambiar MP, Lees A, Tsokos GC. Engagement of complement receptor 2 on the surface of B cells from patients with systemic lupus erythematosus contributes to the increased responsiveness to antigen stimulation. *Lupus*.2002;11:299-303.
108. Prodeus AP, et al. A critical role for complement in maintenance of self-tolerance. *Immunity*.1998;9:721-731.
109. Wehr C, et al. A new CD21^{low} B cell population in the peripheral blood of patients with SLE. *Clinical immunology*.2004;113:161-171.
110. Tan SM. The leucocyte beta2 (CD18) integrins: the structure, functional regulation and signalling properties. *Bioscience reports*.2012;32:241-269.
111. Hynes RO. Integrins: bidirectional, allosteric signaling machines. *Cell*.2002;110:673-687.
112. Corbi AL, Kishimoto TK, Miller LJ, Springer TA. The human leukocyte adhesion glycoprotein Mac-1 (complement receptor type 3, CD11b) alpha subunit. Cloning, primary structure, and relation to the integrins, von Willebrand factor and factor B. *The Journal of biological chemistry*.1988;263:12403-12411.
113. Ross GD, Reed W, Dalzell JG, Becker SE, Hogg N. Macrophage cytoskeleton association with CR3 and CR4 regulates receptor mobility and phagocytosis of iC3b-opsonized erythrocytes. *Journal of leukocyte biology*.1992;51:109-117.
114. Miller LJ, Wiebe M, Springer TA. Purification and alpha subunit N-terminal sequences of human Mac-1 and p150,95 leukocyte adhesion proteins. *Journal of immunology*.1987;138:2381-2383.
115. Altieri DC, Agbanyo FR, Plescia J, Ginsberg MH, Edgington TS, Plow EF. A unique recognition site mediates the interaction of fibrinogen with the leukocyte integrin Mac-1 (CD11b/CD18). *The Journal of biological chemistry*.1990;265:12119-12122.
116. Diamond MS, et al. ICAM-1 (CD54): a counter-receptor for Mac-1 (CD11b/CD18). *The Journal of cell biology*.1990;111:3129-3139.
117. Van Strijp JA, Russell DG, Tuomanen E, Brown EJ, Wright SD. Ligand specificity of purified complement receptor type three (CD11b/CD18, alpha m beta 2, Mac-1). Indirect effects of an Arg-Gly-Asp (RGD) sequence. *Journal of immunology*.1993;151:3324-3336.
118. Ueda T, Rieu P, Brayer J, Arnaout MA. Identification of the complement iC3b binding site in the beta 2 integrin CR3 (CD11b/CD18). *Proceedings of the National Academy of Sciences of the United States of America*.1994;91:10680-10684.
119. Liddington RC, Ginsberg MH. Integrin activation takes shape. *The Journal of cell biology*.2002;158:833-839.
120. Gupta V, et al. The beta-tail domain (betaTD) regulates physiologic ligand binding to integrin CD11b/CD18. *Blood*.2007;109:3513-3520.
121. Li Y, Zhang L. The fourth blade within the beta-propeller is involved specifically in C3bi recognition by integrin alpha M beta 2. *The Journal of biological chemistry*.2003;278:34395-34402.

- 1
2
3 122. Chen X, Xie C, Nishida N, Li Z, Walz T, Springer TA. Requirement of open headpiece
4 conformation for activation of leukocyte integrin alphaXbeta2. *Proceedings of the National Academy*
5 *of Sciences of the United States of America.*2010;107:14727-14732.
- 6 123. Chen X, Yu Y, Mi LZ, Walz T, Springer TA. Molecular basis for complement recognition by
7 integrin alphaXbeta2. *Proceedings of the National Academy of Sciences of the United States of*
8 *America.*2012;109:4586-4591.
- 9 124. Zhang L, Plow EF. Overlapping, but not identical, sites are involved in the recognition of C3bi,
10 neutrophil inhibitory factor, and adhesive ligands by the alphaMbeta2 integrin. *The Journal of*
11 *biological chemistry.*1996;271:18211-18216.
- 12 125. Yan J, et al. Beta-glucan, a "specific" biologic response modifier that uses antibodies to target
13 tumors for cytotoxic recognition by leukocyte complement receptor type 3 (CD11b/CD18). *Journal of*
14 *immunology.*1999;163:3045-3052.
- 15 126. Oliva CR, et al. The integrin Mac-1 (CR3) mediates internalization and directs *Bacillus*
16 *anthracis* spores into professional phagocytes. *Proceedings of the National Academy of Sciences of*
17 *the United States of America.*2008;105:1261-1266.
- 18 127. Peyron P, Bordier C, N'Diaye EN, Maridonneau-Parini I. Nonopsonic phagocytosis of
19 *Mycobacterium kansasii* by human neutrophils depends on cholesterol and is mediated by CR3
20 associated with glycosylphosphatidylinositol-anchored proteins. *Journal of*
21 *immunology.*2000;165:5186-5191.
- 22 128. Wright SD, Levin SM, Jong MT, Chad Z, Kabbash LG. CR3 (CD11b/CD18) expresses one binding
23 site for Arg-Gly-Asp-containing peptides and a second site for bacterial lipopolysaccharide. *The*
24 *Journal of experimental medicine.*1989;169:175-183.
- 25 129. Ingalls RR, Golenbock DT. CD11c/CD18, a transmembrane signaling receptor for
26 lipopolysaccharide. *The Journal of experimental medicine.*1995;181:1473-1479.
- 27 130. Zaffran Y, Zhang L, Ellner JJ. Role of CR4 in *Mycobacterium tuberculosis*-human macrophages
28 binding and signal transduction in the absence of serum. *Infection and immunity.*1998;66:4541-4544.
- 29 131. Prieto J, Eklund A, Patarroyo M. Regulated expression of integrins and other adhesion
30 molecules during differentiation of monocytes into macrophages. *Cellular*
31 *immunology.*1994;156:191-211.
- 32 132. Beyer M, et al. The beta2 integrin CD11c distinguishes a subset of cytotoxic pulmonary T cells
33 with potent antiviral effects in vitro and in vivo. *Respiratory research.*2005;6:70.
- 34 133. Postigo AA, Corbi AL, Sanchez-Madrid F, de Landazuri MO. Regulated expression and function
35 of CD11c/CD18 integrin on human B lymphocytes. Relation between attachment to fibrinogen and
36 triggering of proliferation through CD11c/CD18. *The Journal of experimental*
37 *medicine.*1991;174:1313-1322.
- 38 134. Miller LJ, Bainton DF, Borregaard N, Springer TA. Stimulated mobilization of monocyte Mac-1
39 and p150,95 adhesion proteins from an intracellular vesicular compartment to the cell surface. *The*
40 *Journal of clinical investigation.*1987;80:535-544.
- 41 135. Bretscher MS. Circulating integrins: alpha 5 beta 1, alpha 6 beta 4 and Mac-1, but not alpha 3
42 beta 1, alpha 4 beta 1 or LFA-1. *The EMBO journal.*1992;11:405-410.
- 43 136. Le Cabec V, Carreno S, Moisan A, Bordier C, Maridonneau-Parini I. Complement receptor 3
44 (CD11b/CD18) mediates type I and type II phagocytosis during nonopsonic and opsonic phagocytosis,
45 respectively. *Journal of immunology.*2002;169:2003-2009.
- 46 137. Patel PC, Harrison RE. Membrane ruffles capture C3bi-opsonized particles in activated
47 macrophages. *Molecular biology of the cell.*2008;19:4628-4639.
- 48 138. Bajtaj Z, Speth C, Erdei A, Dierich MP. Cutting edge: productive HIV-1 infection of dendritic
49 cells via complement receptor type 3 (CR3, CD11b/CD18). *Journal of immunology.*2004;173:4775-
50 4778.
- 51 139. Morelli AE, et al. Internalization of circulating apoptotic cells by splenic marginal zone
52 dendritic cells: dependence on complement receptors and effect on cytokine production.
53 *Blood.*2003;101:611-620.
- 54
55
56
57
58
59
60

- 1
2
3 140. Verbovetski I, et al. Opsonization of apoptotic cells by autologous iC3b facilitates clearance
4 by immature dendritic cells, down-regulates DR and CD86, and up-regulates CC chemokine receptor
5 7. *The Journal of experimental medicine*.2002;196:1553-1561.
- 6 141. Georgakopoulos T, Moss ST, Kanagasundaram V. Integrin CD11c contributes to monocyte
7 adhesion with CD11b in a differential manner and requires Src family kinase activity. *Molecular*
8 *immunology*.2008;45:3671-3681.
- 9 142. Pliyev BK, Arefieva TI, Menshikov MY. Urokinase receptor (uPAR) regulates complement
10 receptor 3 (CR3)-mediated neutrophil phagocytosis. *Biochemical and biophysical research*
11 *communications*.2010;397:277-282.
- 12 143. Castro FV, et al. CD11c provides an effective immunotarget for the generation of both CD4
13 and CD8 T cell responses. *European journal of immunology*.2008;38:2263-2273.
- 14 144. White AL, et al. Ligation of CD11c during vaccination promotes germinal centre induction and
15 robust humoral responses without adjuvant. *Immunology*.2010;131:141-151.
- 16 145. Han S, et al. Evaluation of imputation-based association in and around the integrin-alpha-M
17 (ITGAM) gene and replication of robust association between a non-synonymous functional variant
18 within ITGAM and systemic lupus erythematosus (SLE). *Human molecular genetics*.2009;18:1171-
19 1180.
- 20 146. Rubtsov AV, et al. Toll-like receptor 7 (TLR7)-driven accumulation of a novel CD11c(+) B-cell
21 population is important for the development of autoimmunity. *Blood*.2011;118:1305-1315.
- 22 147. Nicolaou F, et al. CD11c gene expression in hairy cell leukemia is dependent upon activation
23 of the proto-oncogenes ras and junD. *Blood*.2003;101:4033-4041.
- 24 148. Sandor N, Kristof K, Parej K, Pap D, Erdei A, Bajtay Z. CR3 is the dominant phagocytotic
25 complement receptor on human dendritic cells. *Immunobiology*.2013;218:652-663.
- 26 149. Lu H, et al. LFA-1 is sufficient in mediating neutrophil emigration in Mac-1-deficient mice. *The*
27 *Journal of clinical investigation*.1997;99:1340-1350.
- 28 150. Flick MJ, et al. Leukocyte engagement of fibrin(ogen) via the integrin receptor
29 alphaMbeta2/Mac-1 is critical for host inflammatory response in vivo. *The Journal of clinical*
30 *investigation*.2004;113:1596-1606.
- 31 151. Ugarova TP, Yakubenko VP. Recognition of fibrinogen by leukocyte integrins. *Annals of the*
32 *New York Academy of Sciences*.2001;936:368-385.
- 33 152. Singh-Jasuja H, et al. The mouse dendritic cell marker CD11c is down-regulated upon cell
34 activation through Toll-like receptor triggering. *Immunobiology*.2013;218:28-39.
- 35 153. Thacker RI, Retzinger GS. Adsorbed fibrinogen regulates the behavior of human dendritic
36 cells in a CD18-dependent manner. *Experimental and molecular pathology*.2008;84:122-130.
- 37
38
39
40
41
42
43
44
45
46
47
48
49
50
51
52
53
54
55
56
57
58
59
60

Legend to Figures

Fig.1. Generation of ligands for C3-receptors

The complement cascade can be activated via three pathways: the classical, lectin-dependent and alternative route, and all these pathways lead to the activation of the central complement component, C3. The first cleavage products are C3a and C3b. The soluble C3a peptide may bind to G-protein coupled C3a receptors, while the larger activation fragment C3b has the capacity to bind covalently to C3b-acceptor sites (C3bA) present on the activating surface. Covalently fixed C3b is the main ligand of CR1 (CD35) and CR1g. C3b can be further processed to generate iC3b and C3d(g), which remain covalently attached to C3bA sites and are ready to interact with complement receptors CR3 (CD11b/CD18), CR4 (CD11c/CD18), CR1g and CR2 (CD21) expressed on several cell types.

Fig.2. Enhancement of mouse T cell response by APC-bound and exosome deposited C3-fragments

Antigen presenting cells (APCs) - mouse macrophages and B cells bearing C3bA-bound C3b and iC3b are able to interact with CR1/2 expressing mouse T cells, resulting in augmented T cell response. Exosomes released by C3-fragment bearing APCs can exert a similar effect.

Fig.3. Enhancement of human T cell response by locally generated C3-fragments fixed to DC

1
2
3 Activated human macrophages produce and activate C3, which results in covalent deposition
4 of C3-fragments onto DCs present in their close vicinity („local opsonization”). DC-bound
5 C3b and iC3b may then interact with CR1 and CR3 expressing T cells and increase the
6 adherence between the APC and the responding T cell, leading to enhanced proliferation.
7
8
9
10

11
12
13
14
15 **Fig.4. Role of CR1 and CR2 in the regulation of B cell functions in men and mice**

16
17 Complement receptors CR1 (CD35) and CR2 (CD21) in human B cells are produced by two
18 separate genes, *Cr1* and *Cr2*. Occupancy of CR1 inhibits BCR induced proliferation, antibody
19 and cytokine production both in physiological and autoimmune condition. In contrast to this,
20 ligation of CR2 (CD21) which is in complex with CD19 and CD81, rather promotes B cell
21 functions under certain experimental conditions. In mice CR1 and CR2 are encoded by a
22 single gene, *Cr2*, and the cell membrane proteins CR1 and CR2 are generated by alternative
23 splicing. On mouse B cells both CR1 and CR2 appear as a subunit of the co-receptor complex
24 containing CD19 and CD81, and their ligation strongly enhance BCR dependent activation of
25 murine B cells. The co-stimulatory effect of CR2 ligation on human B cells is considerable
26 less pronounced than in mice.
27
28
29
30
31
32
33
34
35
36
37
38
39
40
41
42
43

44 **Fig.5. Differential expression of the inhibitory CR1 (CD35) and the activatory CR2**
45 **(CD21) during human B cell differentiation**

46
47
48
49 CR1 expression on CD27⁺, CD10⁻, CD38⁺ human germinal center (GC) B cells is
50 significantly diminished compared to CD27⁻ naive B cells, which may support the intensive
51 proliferation of centroblasts and the differentiation of centrocytes into memory cells or
52 plasmablasts. The elevated expression of the inhibitory CR1 on memory B cells parallel with
53
54
55
56
57
58
59
60

1
2
3 the down-regulation of the activatory CR2 may prevent the activation of low-affinity, non-
4
5 specific B cells and restrict the immune response to the Ag-specific B cell clones, preventing
6
7 autoimmunity.
8
9

10
11
12
13
14 ***Fig.6. CR3 and CR4 mediate different functions on human DCs***
15

16
17 Although iC3b and fibrinogen are common ligands for CR3 and CR4, these two integrins
18
19 have different functions on human MDMs. The uptake of iC3b-opsonised particles is
20
21 mediated mainly by CR3 (CD11b/CD18), in contrast to the adherence to fibrinogen, where
22
23 CR4 (CD11c/CD18) plays a dominant role.
24
25
26
27
28
29
30
31
32
33
34
35
36
37
38
39
40
41
42
43
44
45
46
47
48
49
50
51
52
53
54
55
56
57
58
59
60

Table 1 Tissue distribution and function of C3-binding structures in men and mice

<i>Binding structure</i>	<i>Cell type</i>	<i>Function in humans</i>	<i>Function in mice</i>		
C3b Acceptor	B cells	serves as a site for formation of alternative pathway convertases on CR2	enhancement of antigen presentation		
	T cells^a	enhancement of cytotoxicity	<i>not expressed</i>		
	NK cells	enhancement of cytotoxicity	<i>no data</i>		
	Mf	enhancement of T cell stimulation, inhibition of FcγR-mediated phagocytosis and ADCC	enhancement of antigen presentation		
	DC	enhancement of T cell stimulation	<i>no data</i>		
CR1 (CD35)	B cells	inhibition of BCR dependent proliferation, plasmablast formation, Ab production and cytokine production, EBV infection, complement regulator	CR1/2 (CD21/CD35)	B cells	BCR-dependent enhancement of antibody response
	T cells^a	inhibition of proliferation and cytokine synthesis, induction of Treg cells, complement regulator			BCR-independent enhancement of Ag-presentation
	Mo/mph	phagocytosis, complement regulator		T cells^a	enhancement of cell-cell interactions
	FDC	maintenance of memory, complement regulator		Mo/mph	<i>not expressed</i>
	PMN	phagocytosis, complement regulator		FDC	maintenance of memory
	RBC	IC transport, complement regulator		PMN	<i>not expressed</i>
CR2 (CD21, + CD19 + CD81)	B cells	slight enhancement of proliferation and intracellular Ca ²⁺ release binds EBV, CD23 and interferon	CR2 (CD21, + CD19 + CD81)	CR2 (CD21, + CD19 + CD81)	
	T^a cells	enhancement of cell-cell interactions, EBV infection			
	Mo/mf	<i>not expressed</i>			
	FDC	maintenance of memory			
	PMN	<i>not expressed</i>			
	RBC	<i>not expressed</i>			
CR3 (CD11b/CD18)	B cells	expressed on B-1 cell subpopulation	CR3 (CD11b/CD18)	CR3 (CD11b/CD18)	regulation of T-cell activity in autoimmunity
	T cells	regulation of cytotoxicity and proliferation			upregulated upon virus infection on cytotoxic subpopulations
	Mo/mf	phagocytosis, adhesion and migration			phagocytosis, adhesion and migration
	DC	phagocytosis, adhesion and migration			phagocytosis, adhesion and migration
	PMN	phagocytosis, degranulation, adhesion and migration			phagocytosis, degranulation, adhesion and migration
	NK cells	enhancement of cytotoxicity (β-glucan and iC3b dependent)			enhancement of cytotoxicity (β-glucan and iC3b dependent)
CR4 (CD11c/CD18)	B cells^a	adherence, proliferation–	CR4 (CD11c/CD18)	CR4 (CD11c/CD18)	<i>not expressed</i>
	T cells	cell-mediated cytotoxicity by subset of CD8 ⁺ T-cells -			<i>not expressed</i>
	Mo/mf	adhesion, phagocytosis			<i>not expressed</i>
	DC	adhesion, phagocytosis			cell specific marker (CD11c), phagocytosis
	PMN	adhesion, enhancement of bactericidal activity			<i>not expressed</i>
	NK cells	<i>no data</i>			<i>not expressed</i>

^a expressed on activated cells

Figure 1

1
2
3
4 *Complement activation*

5
6
7
8
9
10
11
12 *Cleavage of C3*

13
14
15
16
17
18
19
20
21
22
23
24
25
26
27
28
29
30
31
32
33
34
35
36
37
38
39
40
41
42
43 *Covalently bound C3-fragments, ligands for C3-receptors*

Receptors for covalently bound C3-fragments

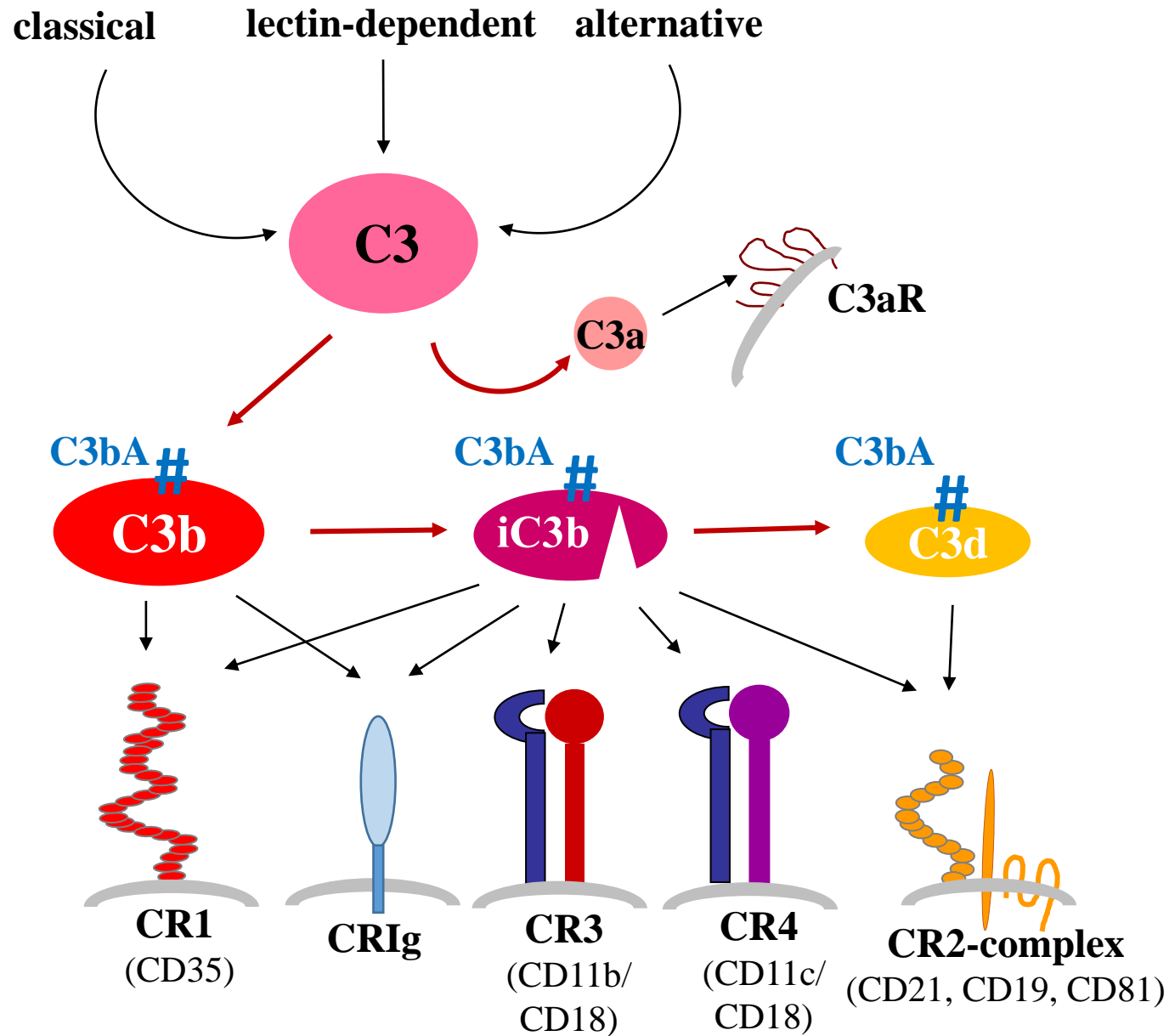
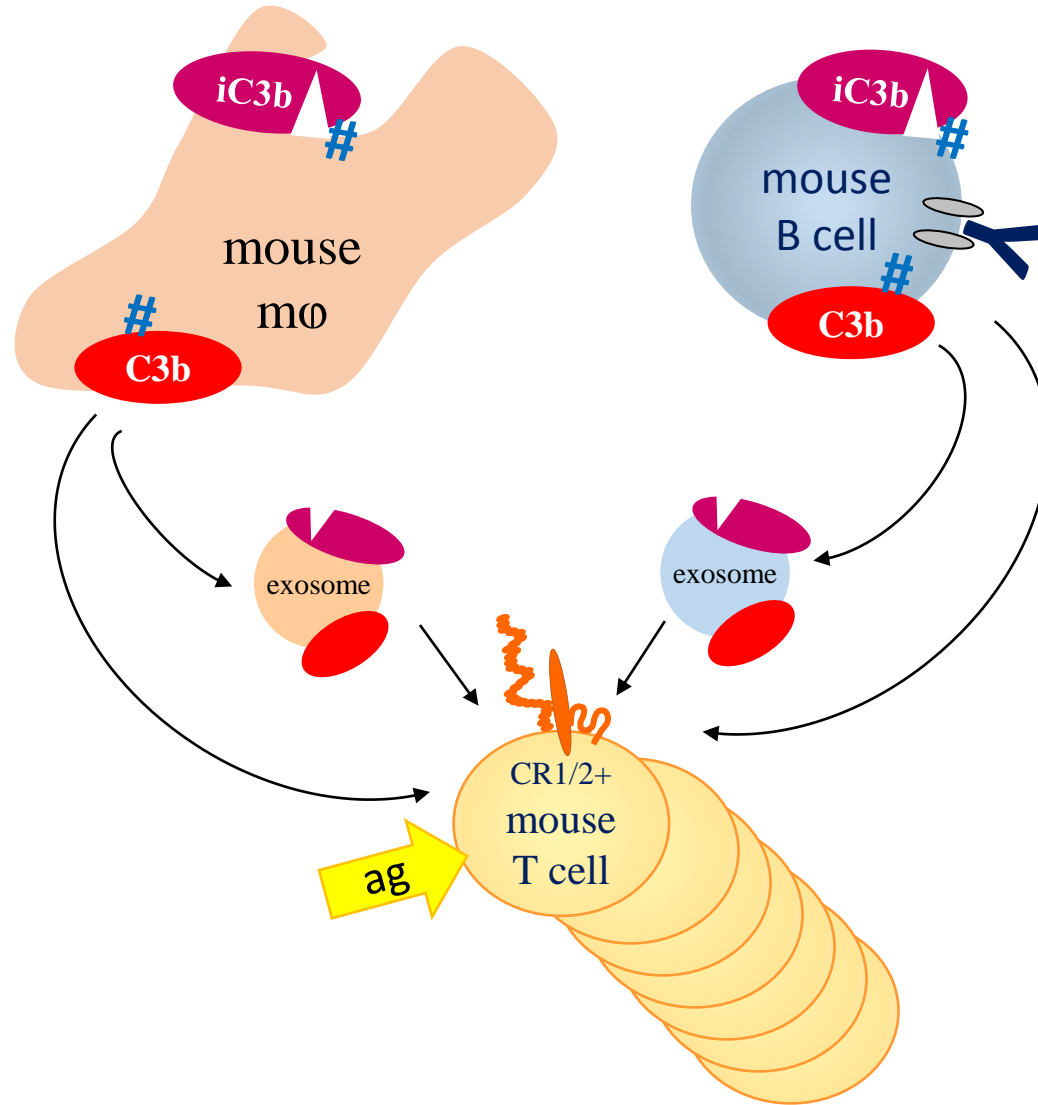


Figure 2



1
2
3
4
5
6
7
8
9
10
11
12
13
14
15
16
17
18
19
20
21
22
23
24
25
26
27
28
29
30
31
32
33
34
35
36
37
38
39
40
41
42
43

Figure 3

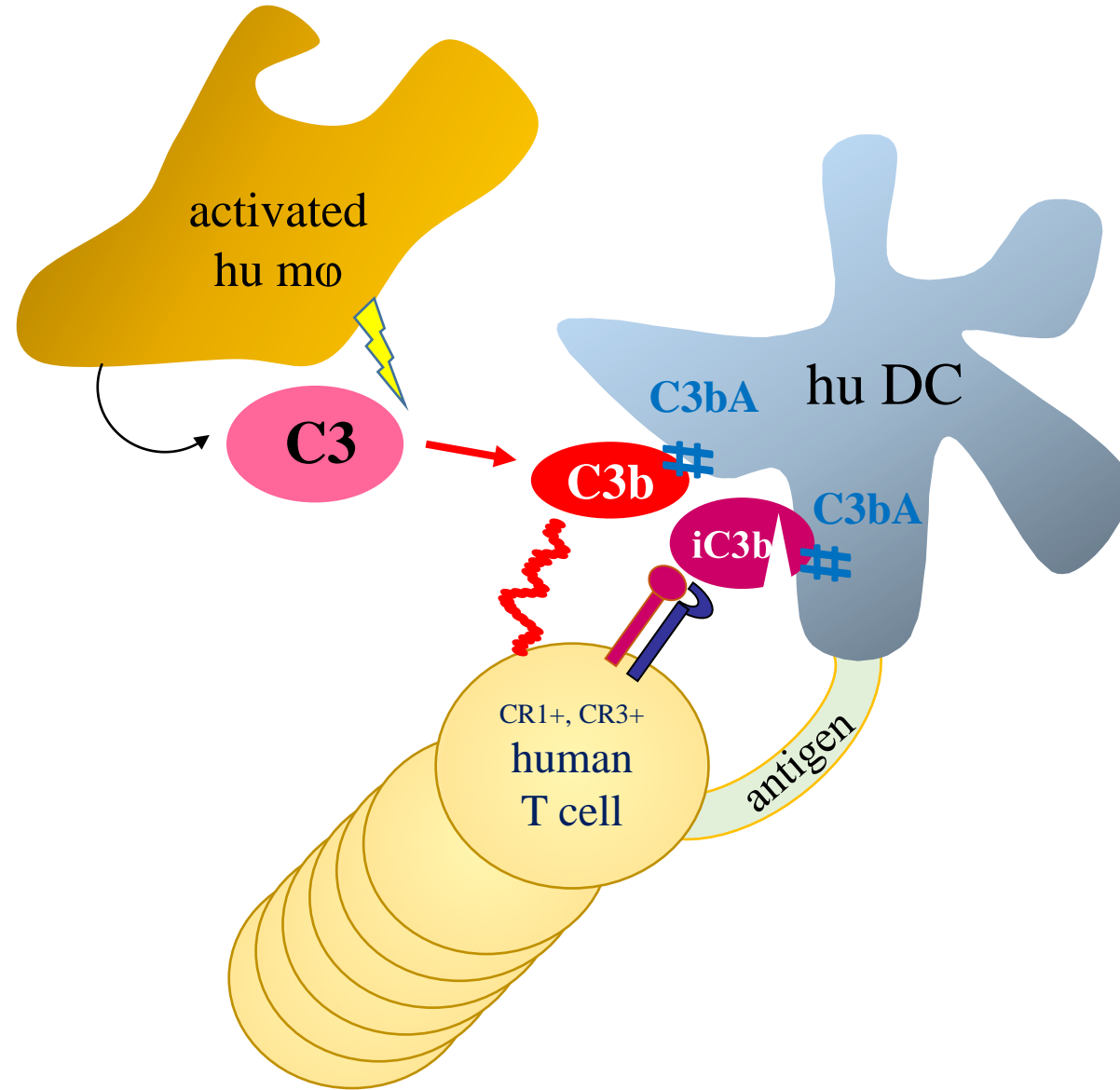
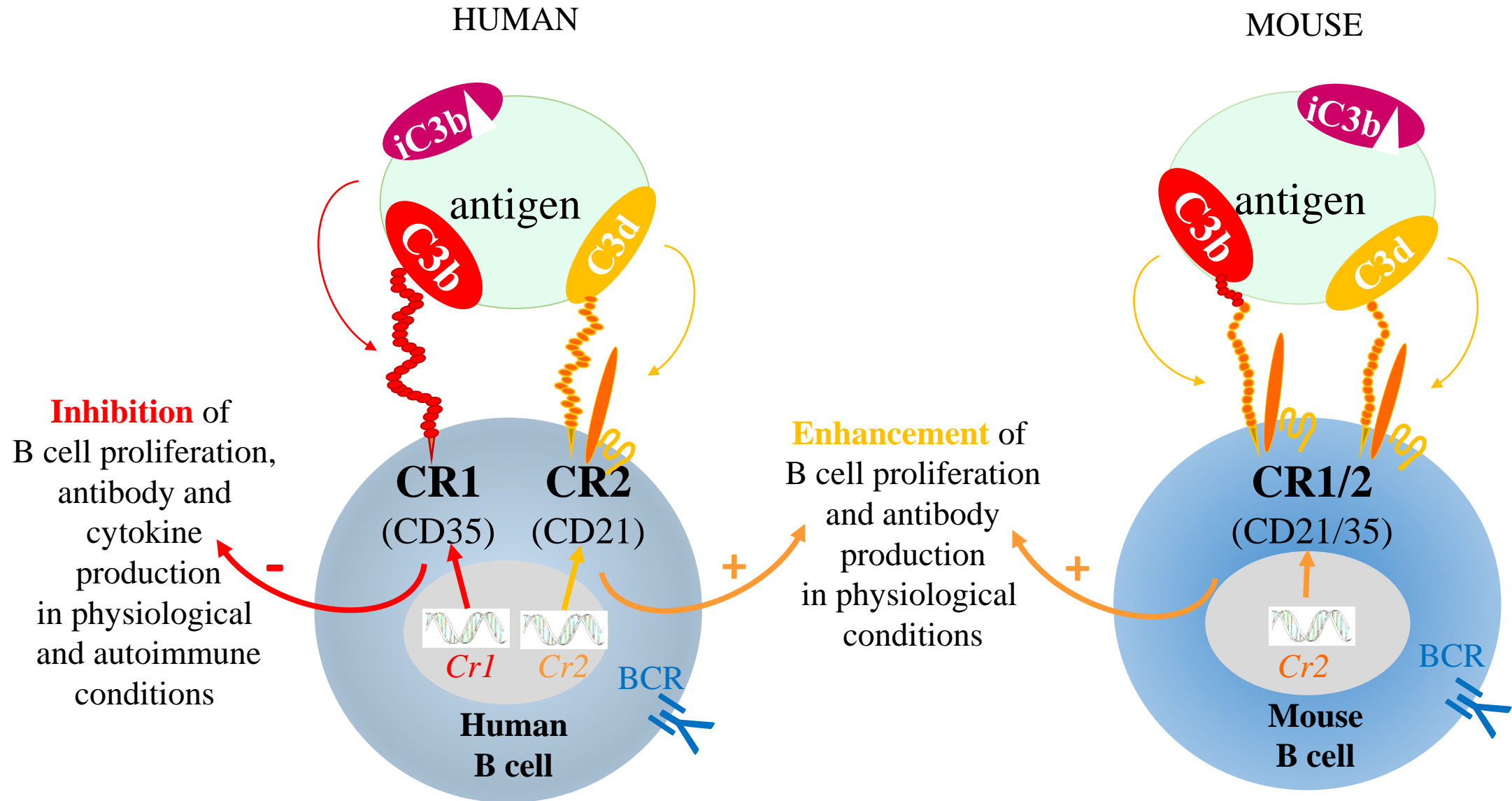
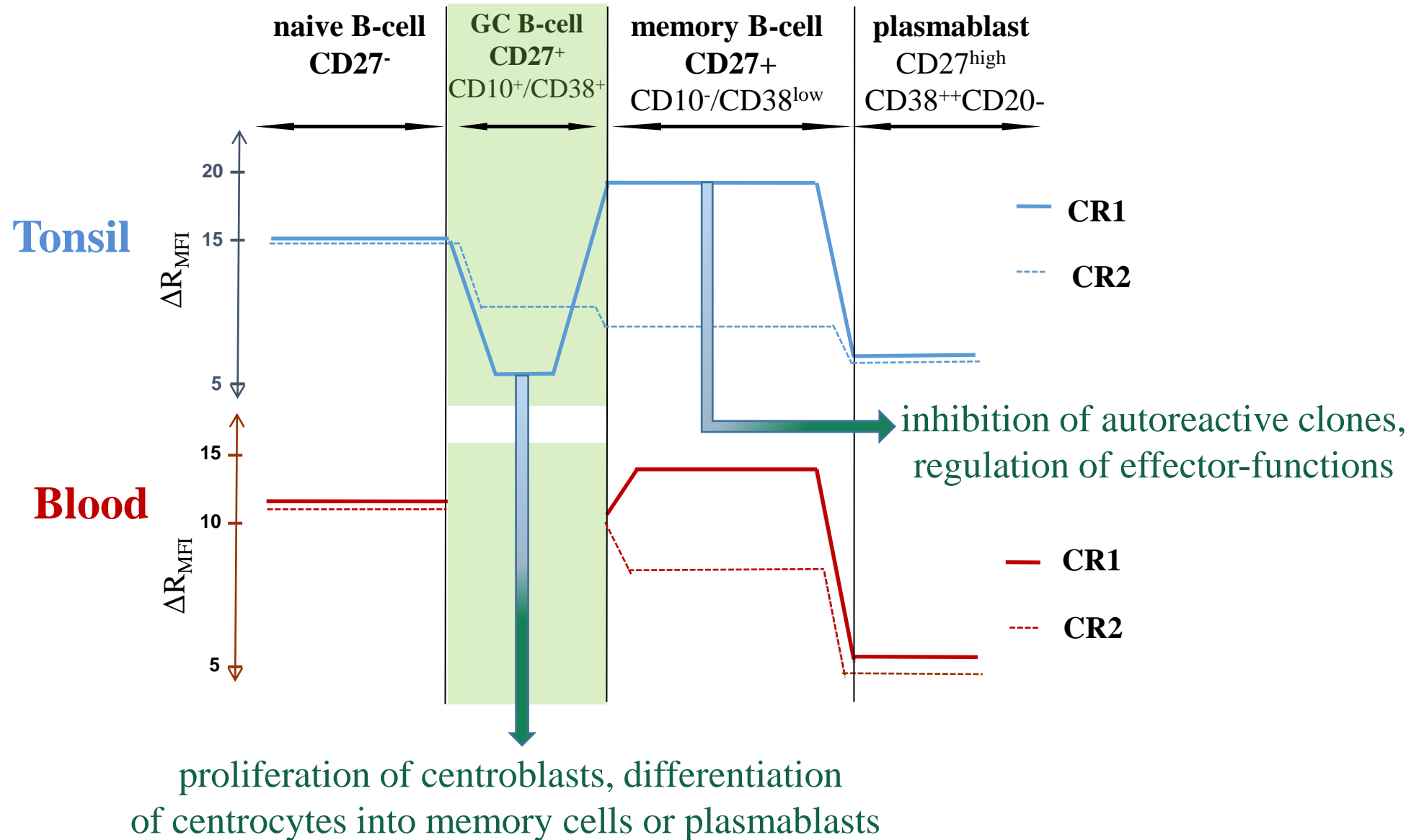


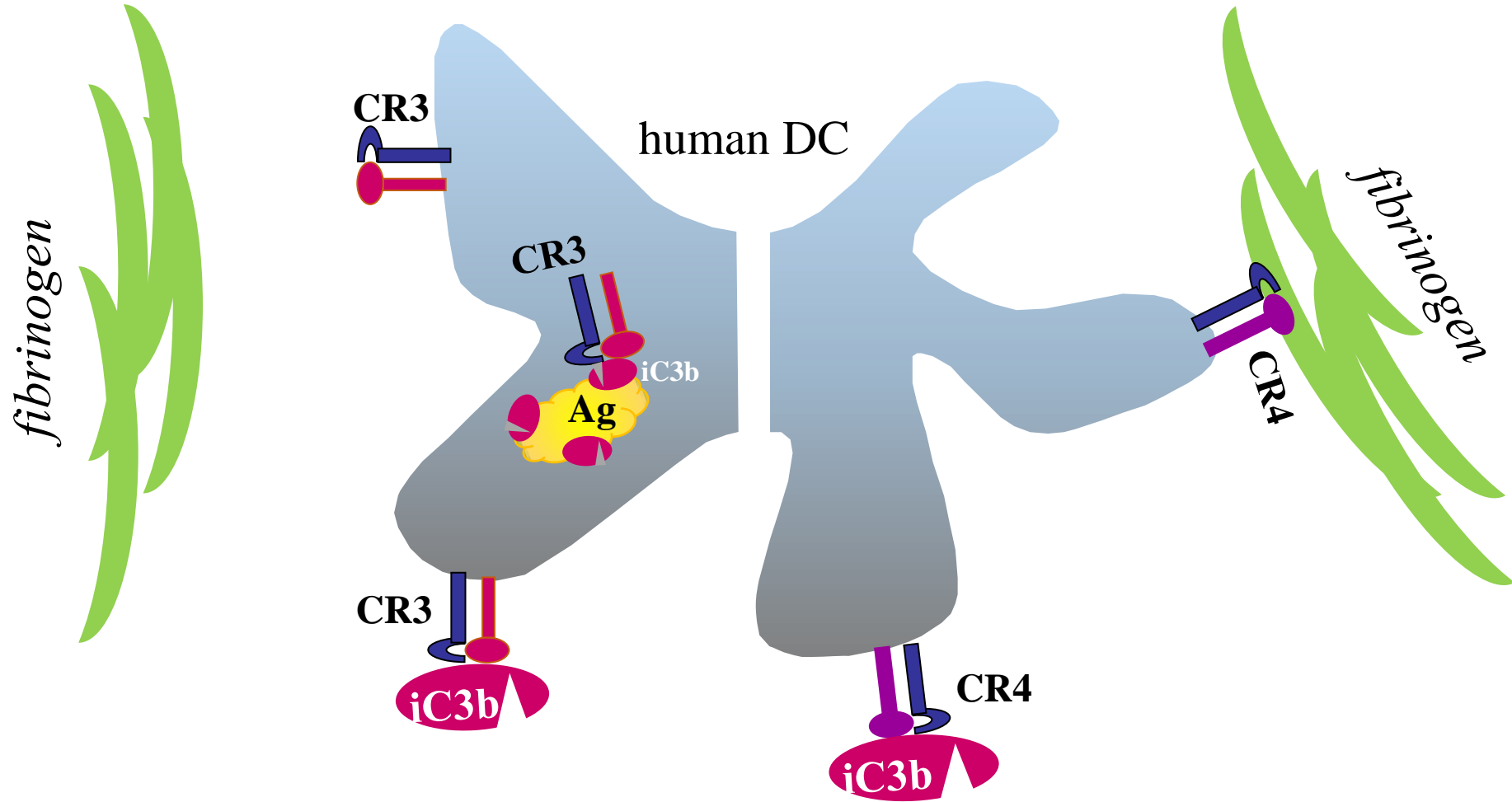
Figure 4



1 **Figure 5**



1 **Figure 6**
 2
 3
 4
 5
 6
 7
 8
 9
 10
 11
 12
 13
 14
 15
 16
 17
 18
 19
 20
 21
 22
 23
 24
 25
 26
 27
 28
 29
 30
 31
 32
 33
 34
 35
 36
 37
 38
 39
 40
 41
 42
 43



- phagocytosis
- no adherence to fibrinogen

- no phagocytosis
- adherence to fibrinogen