

IDŐJÁRÁS

Quarterly Journal of the Hungarian Meteorological Service
Vol. 122, No. 2, April – June, 2018, pp. ?–?

Evaluation of ozone deposition models over a subalpine forest in Niwot Ridge, Colorado

**Dalma Szinyei^{1,2}, Györgyi Gelybó^{*3}, Alex B. Guenther⁴,
 Andrew A. Turnipseed⁵, Eszter Tóth³ and Peter J. H. Builtjes^{6,7}**

¹ *MTA-PE Air Chemistry Research Group, University of Pannonia,
 Egyetem u. 10, H-8200, Veszprém, Hungary*

² *Department of Geology and Meteorology,
 University of Pécs, Ifjúság útja 6, H-7624, Pécs, Hungary*

³ *Institute for Soil Sciences and Agricultural Chemistry,
 Centre for Agricultural Research, Hungarian Academy of Sciences,
 Herman Ottó út 15, H-1022, Budapest, Hungary*

⁴ *Department of Earth System Science
 University of California, Irvine CA 92697, USA*

⁵ *Atmospheric Chemistry Division, National Center for Atmospheric Research,
 P.O. Box 3000, Boulder, CO 80307-3000, USA*

⁶ *TNO Built Environment and Geosciences, Air Quality and Climate Team,
 Princetonlaan 6, 3508 TA, Utrecht, The Netherlands*

⁷ *Institute of Meteorology, Freie Universität Berlin,
 Carl-Heinrich-Becker Weg 6-10, 12165, Berlin, Germany*

**Corresponding author E-mail: gelybo.gyorgyi@agrar.mta.hu*

(Manuscript received in final form April 10, 2017)

Abstract—In this study, we evaluated three conceptually similar ozone gas deposition models. These dry deposition models are frequently used with chemical transport models for calculations over large spatial domains. However, large scale applications of surface-atmosphere exchange of reactive gases require modeling results as accurate as possible to avoid nonlinear accumulation of errors in the spatially representative results. In this paper, model evaluation and comparison against measured data over a coniferous forest at Niwot Ridge AmeriFlux site (Colorado, USA) is carried out. At this site, no previous model calibration took place for any of the models, therefore, we can test and compare their performances under similar conditions as they would perform in a spatial application. Our results show systematic model errors in all the three cases, model performance varies with time of the day, and the errors show a pronounced seasonal pattern as well. The introduction of soil moisture content stress in the model improved model performance regarding the magnitude of fluxes, but the correlation between measured and modeled ozone deposition values remains low. Our results suggest that ozone dry deposition model results should be interpreted carefully in large scale applications, where the accuracy can vary with land cover sometimes are biased.

Key-words: ozone fluxes, deposition model, big leaf models, coniferous forest

1. Introduction

Air quality monitoring and modeling is important not only to quantify the environmental stress on human health but also to understand the impact on terrestrial ecosystems. Many relevant studies, using field measurements and/or model results, have reported that tropospheric ozone can influence the health of the ecosystem (namely, *Fares et al.*, 2013; *Loreto and Fares*, 2007). Ozone (O₃) like some other trace gases passes through the stomata into the mesophyll cells of plants and is toxic since it reacts with the liquid components of the apoplast to create reactive oxygen species (*Fares et al.*, 2013). These can oxidize the cell walls to start a cascade of reactions which lead, at the final stage, to cellular death (*Fares et al.*, 2013). *Karnosky et al.* (2003; 2005) reported significant ecosystem scale responses to elevated carbon dioxide (CO₂) and O₃ levels in the Aspen FACE Experiment. The changes were reflected in several ecosystem properties, including photosynthesis. Their results suggest that elevated O₃ at relatively low concentrations can significantly reduce the growth enhancement by elevated CO₂.

As forests can be long-term sinks of carbon (*Pan et al.*, 2011), they play a key role in terrestrial ecosystem-atmosphere interactions. Any productivity changes caused, e.g., by detrimental effects of the ozone can have serious effects on atmospheric CO₂ concentrations as well (*Ashmore*, 2005; *Klinberg et al.*, 2011). *Anav et al.* (2011) investigated the effects of tropospheric O₃ on photosynthesis and leaf area index on European vegetation using a land surface model (ORCHIDEE) coupled with a chemistry transport model (CHIMERE). Their results showed that the effect of ozone on vegetation leads to a reduction in yearly gross primary productivity (GPP) of about 22% and a reduction in leaf area index (LAI) of 15–20%. Decrease in GPP probably becomes more acute due to the harmful effect of tropospheric ozone. Based on high methane level scenarios (RCP8.5, SRES A2) (*Kirtman et al.*, 2013), it is predicted that background surface ozone will increase about 8ppb on average by 2100 (25% of current levels) relative to scenarios with small methane changes (RCP4.5, RCP6.0). Background tropospheric ozone concentration in the northern hemisphere is recently in the range of 35–40 ppb (*Fowler et al.*, 2008). The resulting indirect radiative forcing of ozone via its effects on ecosystems could contribute to global warming. Based on a recent estimation, 2–8% of the radiative forcing of CO₂ between 1900 and 2004 can be attributed to the indirect effect of ozone (*Kvalevåg and Myhre*, 2013). Therefore, investigation of ozone deposition is of high relevance.

Although there is a global network of measurement sites (Ameriflux, Asiaflux, Euroflux) aiming at monitoring of fluxes of CO₂, a major greenhouse gas, this is not the case with other trace gas flux and deposition measurements, where – especially continuous long-term – measurements are not common. For research aiming at the quantification of tropospheric ozone-climate feedbacks,

reliable large scale information is required on ozone deposition. Besides direct flux measurements with limited availability and spatial representation, modeling efforts are of high importance, since they integrate field measurements of ozone concentration and fluxes to give a reliable estimation on ozone effects on ecosystems. Various 3-dimensional chemical transport models (CTMs) (e.g., AURAMS (*Smyth et al.*, 2009), CAMx (*Emery et al.*, 2012), CHIMERE (*Menut et al.*, 2013), EMEP MSC-W (*Simpson et al.*, 2012), GEOS-CHEM (*Bey et al.*, 2001), LOTOS-EUROS (*Schaap et al.*, 2008), OFIS (*Moussiopoulos and Douros*, 2005), RCG (RemCalGrid) (*Stern*, 2009), TAMP (*Hurley*, 2008), WRF-CHEM (*Grell et al.*, 2005) have been developed to estimate and investigate the environmental load of air pollutants. These models include embedded (1-dimensional) dry deposition modules (sub-models) that apply different approaches of parameterization schemes to calculate deposition of given trace gases or aerosols. The deposition models could be classified based on complexity of model in describing vegetation (one-, two-, or multi-layered) and in the description and parameterization of exchange/deposition processes between the atmosphere and the surface (K-theory, higher order closure, non-local closure). Deposition modules of CTMs are generally based on K-theory.

The choice is usually a compromise between application dependent requirements and data availability. The lack of measurements over different land use categories limits the validity of these modules (*Tuovinen*, 2009).

The deposition velocity (v_d) which is commonly used to model or estimate deposition rate is defined as

$$v_d = -\frac{F}{c - c_0}, \quad (1)$$

where F is the atmosphere-surface flux of the given gas, and c and c_0 are the concentration, of the given gas at a specified reference height and at the surface, respectively (*Chamberlain*, 1967). Most of the global models available in the literature estimate ozone deposition using the resistance analogy (*Sitch et al.*, 2007), and calculate the stomatal resistance using multiplicative algorithms as a function of meteorological parameters (*Jarvis*, 1976), or use physiological schemes, which link stomatal resistance to photosynthesis, like the so-called BWB-algorithm (Ball-Woodrow-Berry) (*Ball et al.*, 1987). There are few studies aiming to compare ozone deposition modules based on different approaches (*Meyers and Baldocchi*, 1988; *Zhang et al.*, 2002), some studies compare different algorithms to estimate stomatal resistance (*Büker et al.*, 2007; *Misson et al.*, 2004; *Niyogi et al.*, 1998; *Uddling et al.*, 2005; *Van Wijk et al.*, 2000). In this study, three dry deposition models, all routinely applied in regional CTMs and characterized by different deposition schemes are evaluated. The investigated

one-dimensional dry deposition models are described in detail in *Zhang et al.* (2003) (the ZHANG model), in *Stern* (2009), and in *Schaap et al.* (2008) (the Deposition of Acidifying Compounds (DEPAC) model). For the evaluation of model results, measured ozone flux data were used for different time scales over the vegetation period. Since these ozone deposition models are widely used for estimation of ozone deposition over large areas, e.g., *Vautard et al.* (2007), it is important to investigate model applicability over different land use categories (LUCs). We choose a land use category (LUC), namely evergreen needleleaf forest, for which none of the investigated models were calibrated. The performance of the ZHANG model has been evaluated for certain land use types (deciduous-forest, mixed-forest, grassland, and vineyard) with correlation (R^2) 0.14–0.51 in summertime using 1–3-month-long datasets (*Zhang et al.*, 2002). They showed that the model overestimated measurements in general, but in the case of mixed forest they found a slight underestimation in the early morning hours. *Büker et al.* (2007) found a correlation (R^2) of 0.3 and overestimation for birch and an R^2 of 0.67 and underestimation for beech again, indicating the site specific behavior of models. The evaluation of the DEPAC model was carried out for sulfur-dioxide over deciduous-forest, coniferous-forest, grassland, and heathland categories with $R^2 = 0.01–0.69$ for wet and dry conditions using 1–10 months long datasets (*Erisman et al.*, 1994). DEPAC-Wesely model have been widely tested over e.g., grassland and temperate deciduous forest (*Pio et al.*, 2000; *Wu et al.*, 2011).

In order to explore discrepancies in results caused purely by the different deposition schemes, other basic parts of the models (not related to the deposition module, e.g., parameterization of meteorological variables) were standardized. The main questions addressed by this work are: (i) What environmental factors have impact on measured ozone deposition at the study site? (ii) What are the weaknesses of the investigated modules and how could they be improved?

The detailed in-depth evaluation of the discrepancies and their causes give an objective evaluation of deposition schemes performances, and designate the direction of further improvements of the ozone deposition models.

2. Material and methods

2.1. Site description

For this study, a six month dataset for the Niwot Ridge AmeriFlux site (Colorado, US) in the Roosevelt National Forest in the Rocky Mountains (40°1'58.4" N, 105°32'47.0" W, 3050 m a.s.l.) was used. Since the site lies on the hillside, the mountain-valley wind can effect meteorological parameters significantly. The soil in the Niwot Ridge area can be characterized by 32.3–63.4% sand and 27.7–50.4% silt content in the upper 12 cm layer (*Schütz,*

2005). The soils at the forested subalpine zone of the Front Range are typically cryalfs or cryolls depending on slope orientation (Birkeland *et al.*, 2003), developed on glacial till, extremely gravelly (granite debris). During May (spring), when the annual snowmelt occurs, the soils are fairly saturated with melt water. The mountain-valley winds predominate at this site (Fig. 1), upslope flows from the east occur on many summer afternoons bringing high concentrations of anthropogenic pollutants, including ozone, from the Denver/Boulder Metropolitan area and have a profound effect on atmospheric ozone dynamics (Turnipseed *et al.*, 2009). Table 1 contains the descriptive parameters of this site.

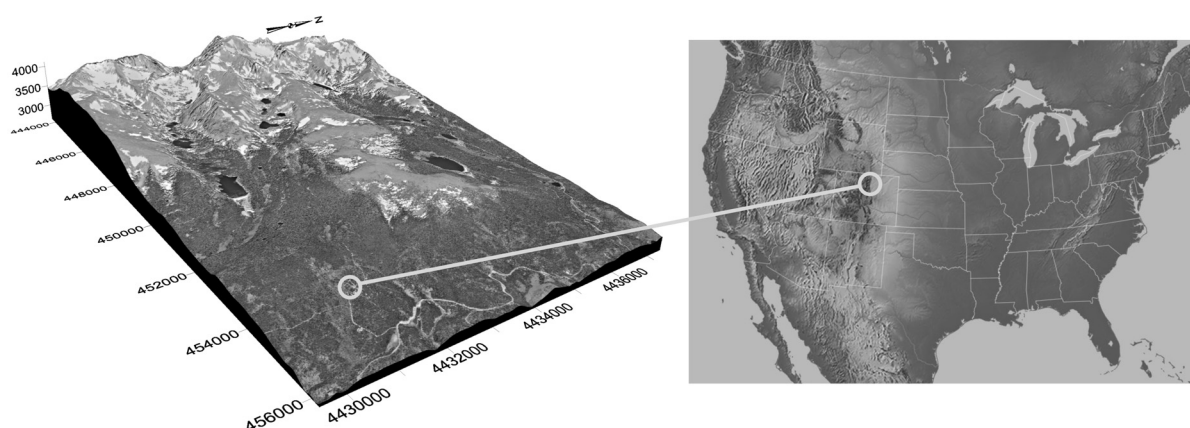


Fig. 1. Relief and location of the Niwot Ridge Ameriflux site.

Table 1. Descriptive characteristics of the study site, and site specific model input data used in the calculations

Site characteristics	Value	Reference
Average annual mean temperature	0.13 °C	1961–1990 mean, CRU CL 2.0 dataset (New <i>et al.</i> , 2002)
Annual total precipitation	482 mm	
Mean (minimum, maximum) temperature (T)	9.41 °C (–14.17 °C, 23.63 °C)	May–October 2003, measured dataset
Total precipitation (P)	232 mm	
Mean (minimum, maximum) soil water content (SWC, θ)	0.152 m ³ m ⁻³ (0.076 m ³ m ⁻³ , 0.389 m ³ m ⁻³)	
Site specific data used in model		
Average height of canopy (h)	11.4 m	(Turnipseed <i>et al.</i> , 2009)
Leaf area index (LAI)	4.2 m ² m ⁻²	
Displacement height (d)	7.8 m	
Aerodynamic roughness (z_0)	1.6 m	

2.2. Measurements

2.2.1. Data used in the study

Continuous ozone flux and meteorological measurements above a subalpine forest canopy (*Pinus contorta*, *Picea engelmannii*, *Abies lasiocarpa*) were carried out during the growing season (May-October) of 2003 at 21.5 m height. Effect of short term variations in meteorological parameters has already been discussed in a previous publication (Turnipseed *et al.*, 2009). The ozone flux was measured using the eddy-covariance (EC) technique above the canopy, detailed description of the experiment can be found in Monson *et al.* (2002) and Turnipseed *et al.*, (2002, 2003, 2009). The meteorological data (air temperature (T), vapor pressure deficit (VPD), soil water content (SWC), photosynthetically active radiation (PAR), and solar radiation (SR) measurements), carbon-dioxide (CO_2) flux, and additional information were obtained from the Ameriflux network (cdiac.ornl.gov/ftp/ameriflux/data/). Due to the lack of in-situ measurements of soil water retention, the value of wilting point ($0.169 \text{ m}^3 \text{ m}^{-3}$) and field capacity soil moisture ($0.396 \text{ m}^3 \text{ m}^{-3}$) were taken from the IGBP-DIS (5×5 arc-minutes) resolution database (Global Gridded Surfaces of Selected Soil Characteristics (International Geosphere-Biosphere Programme – Data and Information System)) (Global Soil Data Task Group).

2.2.2. Data processing and quality assurance

Quality assurance of measured ozone flux data were carried out. Positive fluxes were not taken into account (ozone flux toward the ecosystem is negative by definition). After filtering the ozone flux data, the dataset contains 4013 records of the initially available 5243 half-hourly values (23% of the data were omitted) and 24% of carbon-dioxide fluxes were excluded (initially 7142 data, after filtering 5395). Flux data were omitted during periods of precipitation and very low turbulence intensity, where friction velocity (u^*) is less than 0.2 ms^{-1} after Turnipseed *et al.* (2009).

In the case where measured data were available for more than 70% of the day (assumed as a representative day), gap filling of measured ozone flux was performed to fill the missing half-hourly values using monthly mean diurnal variations technique (Falge *et al.*, 2001). Using the same technique, daily accumulated ozone fluxes and daily averages of environmental parameters were calculated to eliminate the effect of diurnal variations of wind direction due to the mountain-valley wind system on the days when measured data were available for more than 70% of the day.

2.3. Modeling

The dry deposition models evaluated here are all routinely applied in studies using regional CTMs that are described in the literature and applied over large spatial extents (*Stern et al., 2008; Cho et al., 2009*), therefore, it is important to examine the accuracy of their estimations. The ZHANG model is the deposition submodel of AURAMS CTM (*Smyth et al., 2009*), and DEPAC is applied in RCG (*Stern, 2009*) and in LOTOS-EUROS (*Schaap et al., 2008*) CTMs. Models were tested in site-specific mode, which employs local vegetation parameters (*Table 1*) and in situ meteorological observations as input data. Alternatively, the investigated models can be run in regional mode, using the default vegetation parameters, even though these deposition models are not validated for all types of LUCs described by the simulations.

The dry deposition models are vertical (1-dimensional), one-layered models based on the so-called big-leaf concept, as the canopy is treated as one big leaf surface (*Fig. 2*), and the deposition velocity is calculated using the resistance analogy:

$$v_d = \frac{1}{R_a + R_b + R_c} \quad (2)$$

Deposition velocity can be calculated as the reciprocal value of the residual of the resistances (analogous to Ohm's law for electricity) via parameterization of the aerodynamic (R_a) and quasi-laminar boundary layers (R_b) and canopy resistance (R_c), where this latter term includes stomatal (R_{st}), mesophyll (R_{mes}), in-canopy (R_{inc}), cuticular (R_{cut}), and soil (R_{soil}) resistances. Resistance schemes are described later in Section 2.3. The differences in the schemes occur in parameterization of these resistances (*Table 2*). Calculation of R_a is very similar in both models, the ZHANG model uses the formula presented in *Padro et al. (1991)* and the DEPAC model uses the parameterization of *Wesely and Hicks (1977)*. R_b is parameterized using the same formula (*Hicks, 1982*) in both models. To estimate R_c , the following equations were used in the ZHANG model (Eq.(3), *Zhang et al., 2003*) and in the DEPAC model (Eq.(4), *Erisman et al., 1994*):

$$\frac{1}{R_c} = \frac{1 - W_{st}}{R_{st} + R_{mes}} + \frac{1}{R_{cut}} + \frac{1}{R_{inc} + R_{soil}} \quad (3)$$

$$\frac{1}{R_c} = \frac{1}{R_{st} + R_{mes}} + \frac{1}{R_{cut}} + \frac{1}{R_{inc} + R_{soil}} \quad (4)$$

where W_{st} is the fraction of stomatal blocking under wet conditions, and is calculated as:

$$W_{st} = \begin{cases} 0, & SR \leq 200 \text{ Wm}^{-2} \\ \frac{(SR-200)}{800}, & 200 < SR \leq 600 \text{ Wm}^{-2} \\ 0.5, & SR > 600 \text{ Wm}^{-2} \end{cases} \quad (5)$$

Zhang et al. (2003) stated that in the case of morning dew and sunshine immediately after rain, solar radiation could be strong and R_{st} is small, however, stomata can be partially blocked by water films and the W_{st} term will then increase the stomatal resistance.

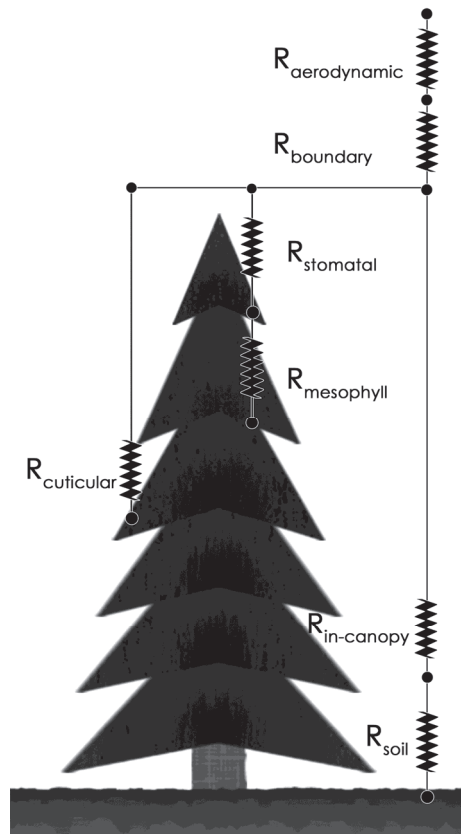


Fig. 2. Resistance network used in the models.

One of the main differences between the models is the parameterization of stress functions of R_{st} (Table 2). The ZHANG model calculates R_{st} as described in *Zhang et al.* (2002, 2003), meanwhile DEPAC model has two different parameterizations for the stomatal resistance based on *Baldocchi et al.* (1987) (referred to here as the DEPAC-Baldocchi model) and *Wesely* (1989) (referred to here as the DEPAC-Wesely model), therefore, three different modules are

used in this study. Both the ZHANG model and the DEPAC-Baldocchi model calculate R_{st} using functions of air temperature ($f(T)$) and vapor pressure deficit ($f(VPD)$), but water stress is described in different ways (for detailed description of model equations see *Appendix 1*). In the case of optimum environmental conditions, the canopy stress functions are equal to one, representing no stress. In the ZHANG model, water stress ($f(\psi)$) is a step function of leaf-water-potential (ψ) depending on SR (*Table 2*), meanwhile in the DEPAC-Baldocchi model there is no soil water stress, $f(\theta)$ equals to 1.

Table 2. Description of main resistances and their parameterization in the model versions used in the study. Independent variables determining their values in the different parameterizations of the models are shown

Resistance	ZHANG	DEPAC-Baldocchi	DEPAC-Wesely
R_{st}	$f(T, vpd, \psi)$	$f(T, vpd, \theta)$	$f(T, SR)$
R_{mes}	constant	constant	constant
R_{cut}	$f(LAI, u^*)$	constant	constant
R_{inc}	$f(LAI, u^*)$	$f(h, LAI, u^*)$	$f(h, LAI, u^*)$
R_{soil}	$f(T)$	constant	constant

Finally, model parameterization improvements were carried out. Many studies have shown that soil moisture is an important factor for controlling stomatal activity (*Bates and Hall, 1981; Gollan et al., 1986*). It has been shown previously and also acknowledged in the literature that resistance based models are sensitive to moisture stress parameterization (*Büker et al., 2012; Van Wijk et al., 2000*). Soil moisture content data is easy to obtain compared to the leaf-water-potential used in some modeling approaches. Since none of the investigated models use soil moisture in the parameterization of stomatal resistance, model improvements were carried out (the ZHANG modified model and the DEPAC-Baldocchi modified model later on) with the introduction of a soil moisture ($f(\theta)$ in Eq.(6)) stress function based on the work of, e.g., *Mészáros et al. (2009)* and *Grünhage and Haenel (2008)*. In the case of ZHANG model, the leaf-water-potential function was replaced by a function of soil moisture. In the case of DEPAC-Baldocchi model, instead of constant value (no soil moisture stress), the soil moisture stress function was implemented. The stress function introduced in the models for SWC is as follows:

$$f(\theta) = \begin{cases} 1 & \text{if } \theta > \theta_f \\ \max\left\{\frac{\theta - \theta_w}{\theta_f - \theta_w}, 0.05\right\} & \text{if } \theta_w < \theta \leq \theta_f \\ 0.05 & \text{if } \theta \leq \theta_w \end{cases}, \quad (6)$$

where θ_w and θ_f denote soil moisture content corresponding to the wilting point and the field capacity, respectively.

To explore the performance of the different resistance schemes of the investigated models without influence of parameterization of environmental parameters, measured meteorological variables were used when it was possible, and meteorological and astronomical parameterizations (e.g., characteristics of moist air and solar radiation) were synchronized using one common scheme in all other cases. Vapor pressure deficit was calculated using the approach of the World Meteorological Organization (2008), density of moist air, specific heat of moist air was estimated after *Grünhage and Haenel (2008)*. Solar zenith angle was calculated using the parameterization scheme provided by NASA (*Landsman, 1993*).

2.4. Evaluation methodology

2.4.1. Measurement evaluation

In the first part of this work, analyses of in situ observations were carried out to explore the effect of environmental factors on ozone deposition. Climate impact studies and ecosystem studies are mainly focused on the accumulated pollutant load the ecosystem receives, i.e., the ozone uptake, to be able to qualitatively evaluate/predict its effect on photosynthetic activity (*Harmens and Mills, 2012; Lombardozzi et al., 2012; Tang et al., 2014*).

We examined soil moisture, global radiation, photosynthetically active radiation, vapor pressure deficit, and temperature as abiotic controlling factors of ozone flux. Half-hourly measurements were quality checked and analyzed for the whole six-month-long period for changes in relationships between ozone fluxes and ozone deposition drivers throughout the growing season (May-October).

2.4.2. Model evaluation

In the second part of our study, outputs of three deposition models were compared to measured ozone fluxes. Different model quality indicators were calculated to evaluate model performance using half-hourly data on monthly and six-month-long time scales. The statistical metrics used in this study (Pearson linear correlation coefficient (R), mean bias (MB), mean absolute error (MAE),

root mean square error (*RMSE*), normalized mean square error (*NMSE*), index of agreement (*IA*), and modeling efficiency (*ME*) indicators) were calculated for the whole period both for daytime (when the solar zenith angle is greater than zero) and nighttime (when the solar zenith angle is less than or equal to zero). The equations of these metrics are given below (Neter *et al.*, 1988; Chang and Hanna, 2004; Pereira, 2004; Falge *et al.*, 2005). *R* is the linear correlation between the observations and model results, values can vary between -1 and 1 (perfect correlation), 0 means the datasets are independent. *MB* is a measure of overall bias for variables, in case of perfect estimation it is 0 . *MAE* is overall absolute bias of observed and modeled data. *RMSE* is the square root of the average squared bias of the modeled data, it is sensitive for extreme errors. *NMSE* emphasizes the scatter in the entire data set. Smaller values of *NMSE* denote better model performance. *IA* can vary between 0 and 1 , and it is a metric of mean square error, in case of perfect agreement it is equal to 1 . *ME* has a range from 1 to $-\infty$, and it is a measure of the accuracy of model estimations to the mean of observations, any positive value means that estimation is better than means of measurements, in case of perfect agreement it is equal to 1 .

3. Results and discussion

3.1. Controlling factors of ozone fluxes

In order to explore the effect of environmental factors on ozone deposition, relationships between environmental variables and energy fluxes were examined on a daily basis and on the original half-hourly resolution using eddy covariance (EC) data.

Half-hourly measured meteorological data were compared (*T*, *SWC*, *VPD*, *SR*, *PAR*) with half-hourly measured ozone fluxes. *Fig. 3* shows time series plots for these variables. The soil at the site was more or less saturated with water during May, therefore, soil moisture is probably not a limiting factor during that period. Turnipseed *et al.* (2009) found that after photosynthetic photon flux density (*PPFD*), *VPD* was the most dominant environmental driver controlling the daytime deposition of O_3 at this site through its influence over stomatal conductance.

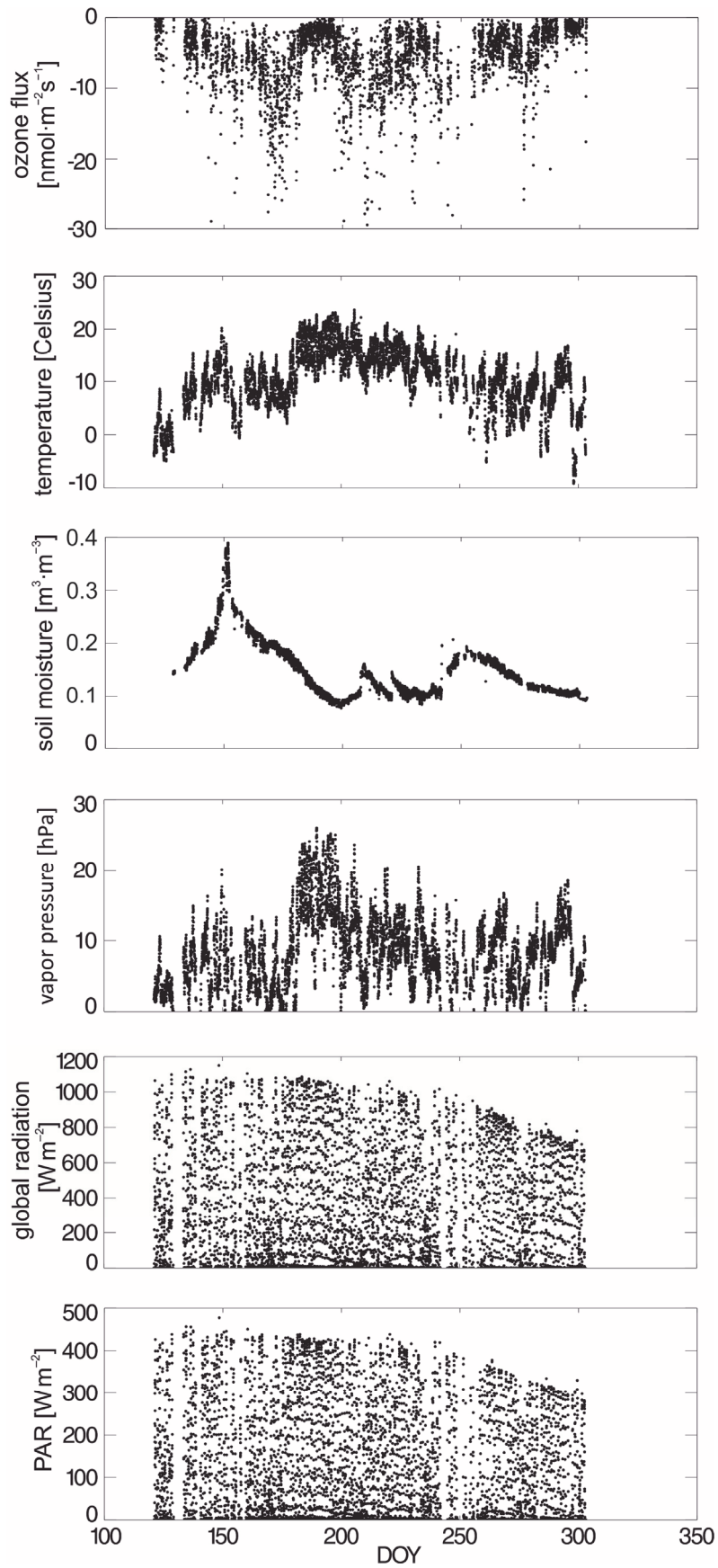


Fig. 3. Time series of controlling factors and ozone flux (May-October, 2003).

3.2. Results of model evaluations

Model results were investigated on half-hourly and daily time steps, and model performance indicators were calculated based on measured and modelled ozone flux data.

The ZHANG model outperformed the other two model versions on the original half-hourly resolution, but one should be aware of the still poor correlation between measured and modeled ozone flux for the whole period (Table 3). In order to evaluate the average behavior of models and how their performance varies with time of the day, mean diurnal variations of measured and modeled ozone fluxes were calculated. The ZHANG model provided the best results compared to the other two models in capturing the ozone flux magnitude and dynamics as shown by mean diurnal variation (Fig. 4A and C). The ZHANG modified model in Fig. 4A will be addressed later in the paper.

Table 3: Model quality indicators based on half-hourly measured ozone fluxes (May-October, 2003)

Model name	Period	R^2 ($p < 0.001$)	N	MB [nmol $m^{-2} s^{-1}$]	MAE [nmol $m^{-2} s^{-1}$]	$RMSE$ [nmol $m^{-2} s^{-1}$]	$NMSE$ [nmol $m^{-2} s^{-1}$]	IA	ME
ZHANG model	All data	0.26	3877	1.39	3.21	4.45	0.52	0.68	0.08
	Daytime	0.17	2796	1.83	3.77	4.91	0.44	0.59	-0.03
	Nighttime	0.07	1081	0.25	1.76	2.91	0.93	0.47	-0.15
DEPAC-Baldocchi model	All data	0.15	3877	7.30	8.09	10.07	1.44	0.46	-3.71
	Daytime	0.05	2796	9.84	10.47	11.72	1.29	0.37	-4.88
	Nighttime	0.02	1081	0.74	1.93	2.90	0.80	0.31	-0.15
DEPAC-Wesely model	All data	0.07	3877	-0.50	3.03	4.55	0.75	0.42	0.04
	Daytime	0.01	2796	-0.98	3.46	5.04	0.70	0.34	-0.09
	Nighttime	0.02	1081	0.74	1.93	2.90	0.80	0.31	-0.15

Mean measured ozone flux [nmol $m^{-2} s^{-1}$] for all data: -5.50, daytime: -6.51, nighttime: -2.90

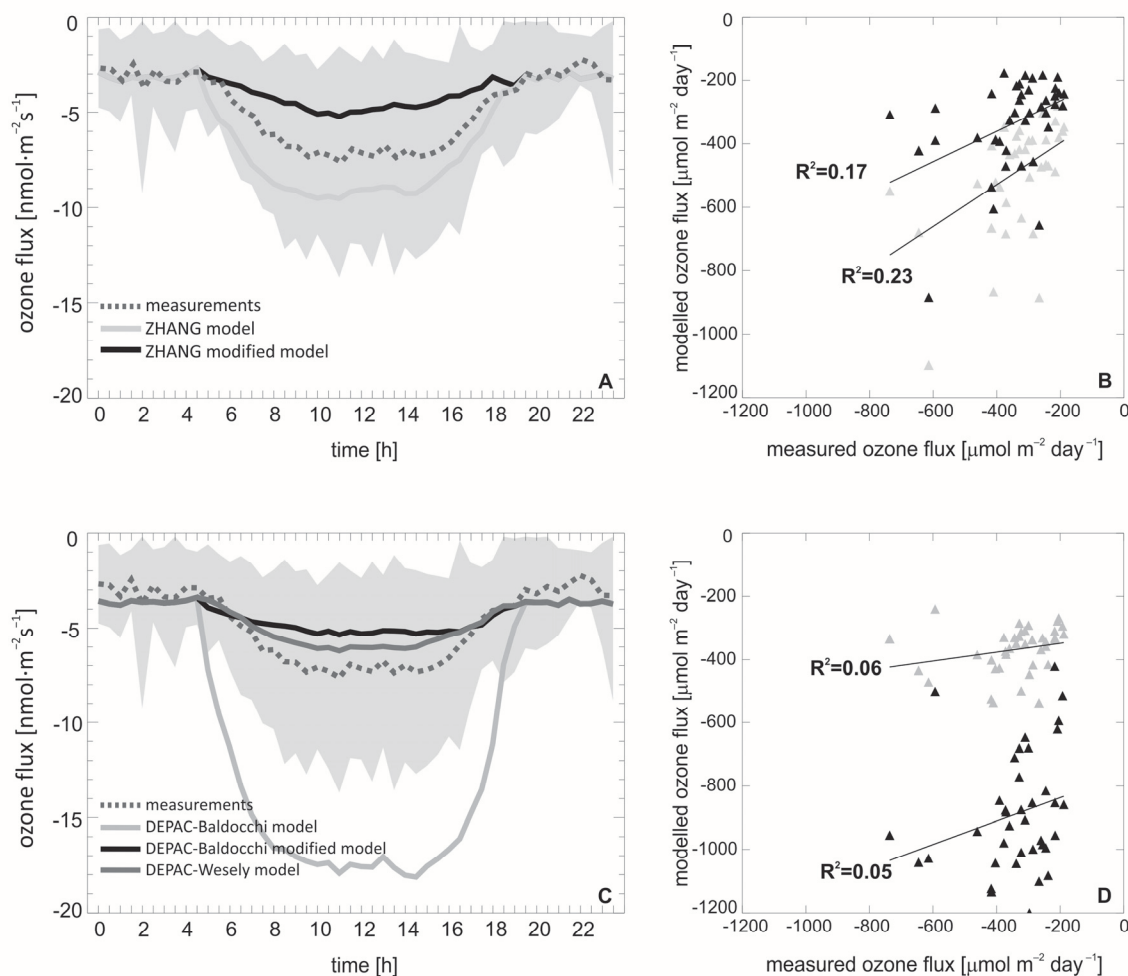


Fig. 4. Performance of the ZHANG model and the ZHANG modified model (May-October, 2003): (A) mean diurnal variation of half-hourly measured and modeled ozone flux, (B) daily accumulated measured and modeled ozone flux. Performance of the DEPAC-Baldocchi model, the DEPAC-Wesely model, and the DEPAC-Baldocchi modified model (May-October, 2003): (C) mean diurnal variation of half-hourly measured and modeled ozone flux, (D) daily accumulated measured and modeled ozone flux.

The performances of the two versions of the DEPAC model stay below that of the ZHANG model as it is reflected by most model quality indicators listed in Table 3. Correlation is lower, the DEPAC-Baldocchi and the DEPAC-Wesely parameterization can only explain 15% and 7% of the observed variance. Model errors are significantly higher in the case of the DEPAC-Baldocchi parameterization. It should be noted that although DEPAC-Wesely can explain even less of the observed variance of half-hourly ozone deposition, its performance is comparable to that of the ZHANG model based on some other statistical measures (*IA*, *ME*, *NMSE*, *RMSE*).

Mean diurnal variation of ozone deposition modeled by different parameterizations of the DEPAC model are shown in *Fig. 4C* together with measured ozone deposition. The DEPAC-Baldocchi model overestimates the measured fluxes (as it is also indicated by statistics based on the full half-hourly dataset, shown in *Table 3*). The most important difference between the ZHANG and DEPAC models lies in the parameterization of R_{st} . It has been reported by *Mészáros et al. (2009)* that deposition models are sensitive to soil moisture content input. The soil moisture stress is not parameterized in the DEPAC-Baldocchi model, $f(\theta)$ has a fixed value of one, which assumes that there is no water stress for the canopy. So, these results show that it is essential to include the soil moisture in the dry deposition models, consequently, the ZHANG model is to be preferred above the DEPAC models.

As it is presented in *Fig. 4C*, the DEPAC-Wesely model underestimates the measured fluxes, although model error is lower than in the case of the DEPAC-Baldocchi parameterization (*Table 3*). The DEPAC-Baldocchi modified model in *Fig. 4C* will be discussed later in the paper.

To explore if models capture long-term variabilities, monthly means of ozone fluxes were calculated (*Fig. 5*). We separated data to daytime (when solar elevation angle is greater than 0, *Fig. 5A*) and nighttime (when solar elevation angle is less than 0, *Fig. 5B*) parts, since the modeling approach is different for nighttime conditions (see *Appendix 1*). The calculated nighttime ozone deposition data reveal a very good agreement with measured flux (*Fig. 5B*). Considering that nighttime ozone fluxes are dominated by cuticular or soil pathways, this good performance compared to the daytime performance of the models suggests that mostly the description of stomatal uptake is responsible for model errors. For observed ozone flux during nighttime, the DEPAC-Baldocchi and the DEPAC-Wesely models result in the same values, since the parameterizations are the same for nighttime conditions. For daytime data where stomatal resistance is calculated using the more sophisticated approach described in *Appendix 1*, model performances diverge more. The relatively simple parameterization of the DEPAC-Wesely model simulated monthly average ozone deposition with the smallest bias in each month except June. It should be kept in mind, however, that only measured ozone flux data is considered here, i.e., this is not real average ozone deposition but the monthly average of available measured data.

When models are applied in climate change impact studies over large spatial and temporal extents, data are often not used in their original temporal resolution (see, e.g., *Sitch et al., 2007*). Model results were examined on a daily time step using accumulated ozone fluxes to simulate ozone load (*Fig. 4B*, *Fig. 4D*). This approach is used in most large scale climate impact studies. Results of the ZHANG model have the best correlation with the measured accumulated ozone fluxes ($R^2 = 0.23$, $p < 0.05$, *Table 4*), but in case of DEPAC-Baldocchi, the model correlation cannot be detected ($R^2 = 0.05$, $p = 0.144$, *Table 4*).

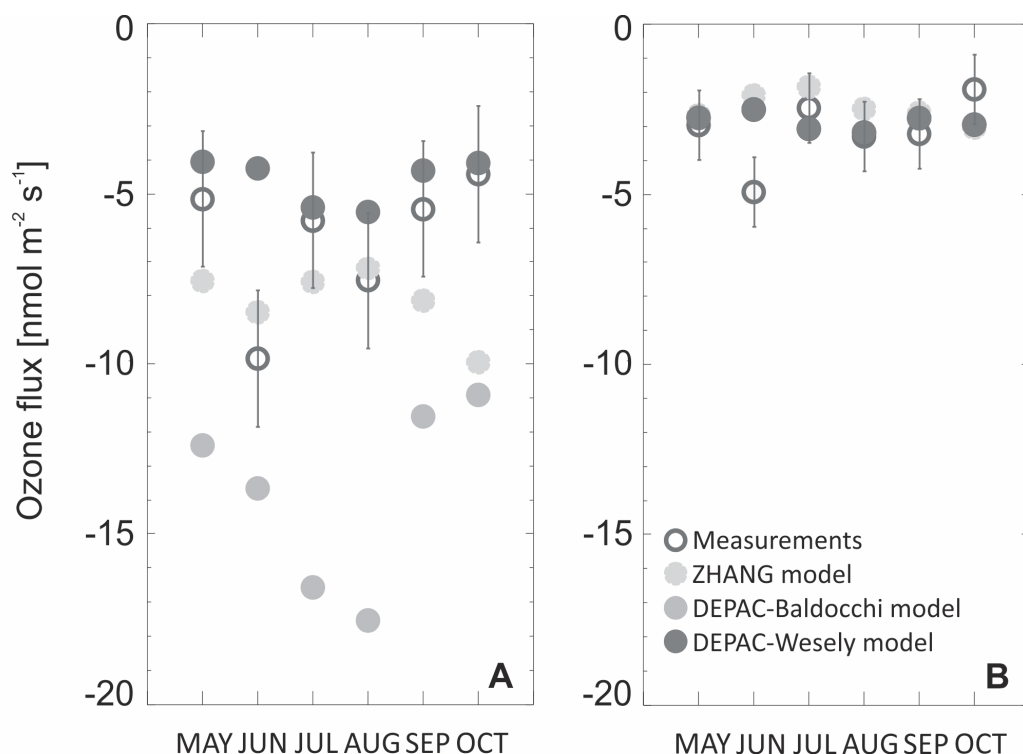


Fig. 5. Monthly means of half-hourly modeled and measured ozone fluxes (May-October, 2003): (A) daytime, when solar elevation greater than 0, (B) nighttime, when solar elevation is less than zero. Standard deviation of measured data is also shown as error bars.

Table 4. Model quality indicators based on daily measured accumulated ozone fluxes (May-October, 2003)

Model name	R^2	p	N	MB [$\mu\text{mol m}^{-2} \text{day}^{-1}$]	MAE [$\mu\text{mol m}^{-2} \text{day}^{-1}$]	$RMSE$ [$\mu\text{mol m}^{-2} \text{day}^{-1}$]	$NMSE$ [$\text{nmol m}^{-2} \text{day}^{-1}$]	IA	ME
ZHANG model	0.22	0.002	39	148.92	171.07	218.66	0.28	0.99	0.96
DEPAC-Baldocchi model	0.06	0.144	39	548.17	552.93	585.12	1.13	0.98	0.51
DEPAC-Wesely model	0.02	0.358	39	61.14	119.43	151.74	0.17	1.00	0.99

Mean measured ozone flux [$\mu\text{mol m}^{-2} \text{day}^{-1}$]: -340.94

This contradicting behavior of the three structurally identical models demonstrates the need for a careful interpretation of resistance based model results for sites where no previous results are reported in the literature regarding correlation and systematic model errors. Results of the ZHANG modified model (*Fig. 4A*) has a lower correlation ($R^2 = 0.09$, $p < 0.001$ instead of 0.25 in *Table 3*) with measurements using the full half-hourly dataset, and RMSE value did not change ($4.69 \text{ nmol m}^{-2} \text{ s}^{-1}$). In case of the DEPAC-Baldocchi modified model (*Fig. 4C*), R^2 decreased (0.05, $p < 0.001$ instead of 0.15 in *Table 3*), parallel RMSE decreased almost by half compared to the original parameterization ($4.66 \text{ nmol m}^{-2} \text{ s}^{-1}$ versus $10.07 \text{ nmol m}^{-2} \text{ s}^{-1}$). On a daily time step, the DEPAC-Baldocchi modified model results showed better correlation with measured accumulated ozone fluxes than the original model ($R^2 = 0.06$, $p = 0.140$; *Fig. 4D*). Comparing *Fig. 4B* and *Fig. 4D* we can conclude that the modified models resulted in similar values, at least compared to the differences observed when comparing the original model versions. This can be explained by non-stomatal resistance (R_{cut} , R_{inc} , and R_{soil}), since with implementation of $f(\theta)$, R_{st} has the same value in both modified models.

Mészáros *et al.* (2009) carried out a sensitivity analysis of a multiplicative dry deposition model and found that soil moisture content is one of the most influential parameters in the model. This explains why the introduction of soil moisture stress parameterization in the DEPAC-Baldocchi model had such a dramatic effect on model results. However, as indicated by measurements, soil moisture was not a driving factor for ozone deposition at this site in the measurement period. This suggests that model constraints do not reflect real environmental circumstances, i.e., model results agree with measured ozone fluxes, but the model fails to explain short-term variability of ozone deposition, which led to a decrease in correlation between half-hourly measured and modeled ozone fluxes. The use of soil moisture content data representative for the whole root zone when available should improve model results.

4. Conclusion

In this study, ecosystem-atmosphere ozone fluxes are simulated using three widely used deposition models. Our model validation results showed worse model performance during daytime when stomatal activity is higher, which suggests that modeling problems are especially related to the stomatal pathway ozone deposition. It was also shown that the ZHANG model is to be preferred under most circumstances, as it provided the best model-measurement agreement among the used models in hourly and daily time steps. Nevertheless, the most accurate long-term (monthly average) results were provided by the DEPAC-Wesely model. The inclusion of soil moisture stress in two models improved model accuracy, but the correlation remained low, suggesting that

there are other errors in the description of factors and their interactions regulating ozone deposition in the models.

In spite of their wide acceptance (*Brook et al.*, 1999; *Flemming and Stern*, 2007), the multiplicative models used in this study have not been calibrated for some important land cover types, e.g., none of the above models have been calibrated for evergreen forests. In studies where these models are applied on large spatial scales, continents, and countries (*Manders et al.*, 2012; *van Loon et al.*, 2007; *Smyth et al.*, 2009), this can bias the results over these land uses, leading to spatially varying uncertainty in the estimations, which should be considered when interpreting results from chemical transport models. According to our results, even if we minimize input data errors using measured driving data when available, model results diverge when validated for a randomly selected geographical location and land use type. This suggests, that the lack of calibration inhibits the reliable use of these models in case of ecosystem types other than they have been calibrated for, and hence, their practicality in large scale studies, where models are used over several ecosystems, might be questionable and their results should be interpreted carefully.

Acknowledgement: The authors would like to thank *Prof. Russell Monson* and the Niwot Ridge AmeriFlux site for access to their data. Present article was published in the frame of the project TÁMOP-4.2.2.A-11/1/KONV-2012-0064. The project is realized with the support of the European Union, with the co-funding of the European Social Fund. This research was funded by the TÁMOP/SROP-4.2.2.C-11/1/KONV-2012-0005 Scholarship (Well-being in the Information Society) Grant.

The authors declare that there is no conflict of interests regarding the publication of this paper.

Appendix

Appendix 1: Formulas used in the model to describe the resistance network.

Zhang model	DEPAC model
$R_a = \frac{1}{\kappa \cdot u^*} \left[0.74 \cdot \ln \left(\frac{z_r}{z_0} \right) - \psi_h \right]$	$R_a = \frac{1}{\kappa \cdot u^*} \left[\ln \left(\frac{z_r}{z_0} \right) - \psi_h \right]$
$R_b = 1.31 \cdot \frac{5}{u^*}$	
$R_{st} = \frac{1}{G_{st}(PAR) \cdot f(T) \cdot f(vpd) \cdot f(\psi) \cdot 0.637}$	<p>Baldocchi</p> $R_{st} = \frac{1}{G_{st}(PAR) \cdot f(T) \cdot f(vpd) \cdot f(\theta) \cdot 0.637}$ <p>Wesely</p> $R_{st} = 1,571 \cdot R_i \cdot \frac{400}{T \cdot (40 - T)} \cdot \left(1 + \left(\frac{200}{SR + 0.1} \right)^2 \right)$
if solar elevation < 0: $R_{st} = 12500 \text{ [sm}^{-1}\text{]}$	
$R_{mes} = 0 \text{ [sm}^{-1}\text{]}$	
$R_{cut} = \frac{4000}{u^* \cdot LAI^{0.25} \cdot e^{0.03RH}}$ <p>if $T < -1^\circ\text{C}$: $R_{cut} = R_{cut} \cdot e^{0.2(-1-T)}$</p>	$R_{cut} = 1000 \text{ [sm}^{-1}\text{]}$
$R_{inc} = \frac{100 \cdot LAI^{0.25}}{(u^*)^2}$	$R_{inc} = 8 \cdot h \cdot \frac{LAI}{u^*}$
$R_{soil} = 200 \text{ [sm}^{-1}\text{]}$ <p>if $T < -1^\circ\text{C}$: $R_{soil} = R_{soil} \cdot e^{0.2(-1-T)}$</p>	$R_{soil} = 100 \text{ [sm}^{-1}\text{]}$ <p>if $T < 0^\circ\text{C}$: $R_{soil} = 2000 \text{ [sm}^{-1}\text{]}$</p>
$G_{st}(PAR) = \frac{LAI_s}{r_{st}(PAR_s)} + \frac{LAI_{sh}}{r_{st}(PAR_{sh})}$	$G_{st}(PAR) = \frac{LAI}{250 \cdot (1 + 25 / PAR_{measured})}$
$r_{st}(PAR_x) = 250 \cdot (1 + 25 / PAR_x)$	$R_i = \begin{cases} 130 \text{ [sm}^{-1}\text{]} & \text{summer} \\ 250 \text{ [sm}^{-1}\text{]} & \text{autumn} \\ 400 \text{ [sm}^{-1}\text{]} & \text{winter} \\ 250 \text{ [sm}^{-1}\text{]} & \text{spring} \end{cases}$
$f(VPD) = 1 - b_{VPD} \cdot (e_s - e)$	

$f(T) = \frac{T - T_{\min}}{T_{opt} - T_{\min}} \cdot \left(\frac{T_{\max} - T}{T_{\max} - T_{opt}} \right)^{b_T}$ <p style="text-align: right;">, Baldocchi et al., 1987</p>	
$b_T = \frac{T_{\max} - T_{opt}}{T_{\max} - T_{\min}}$ <p style="text-align: right;">, Baldocchi et al., 1987</p>	
$f(\psi) = \begin{cases} 1 & \text{if } \psi > \psi_{c1} \\ \max\left(\frac{\psi - \psi_{c2}}{\psi_{c1} - \psi_{c2}}, 0.05\right) & \text{if } \psi_{c2} < \psi \leq \psi_{c1} \\ 0.05 & \text{if } \psi \leq \psi_{c2} \end{cases}$ <p>$f(\theta) = 1$</p> <p>$\psi = -0.72 - 0.0013SR$</p>	
<p>unstable</p> $\Phi_h = 0.74 \cdot \ln \left[\frac{1 + \left(1 - \left(9 \cdot \frac{z_r}{L} \right) \right)^{0.25}}{2} \right]$	<p>unstable</p> $\Phi_h = \exp \left[0.598 + 0.39 \cdot \ln \left(-\frac{z_r}{L} \right) - 0.09 \cdot \left(\ln \left(-\frac{z_r}{L} \right) \right)^2 \right]$
<p>stable</p> $\Phi_h = -4.7 \frac{z_r}{L}$	<p>stable</p> $\Phi_h = -5 \frac{z_r}{L}$
<p>neutral</p> $\Phi_h = 0$	

Appendix 2: Nomenclature for Appendix 1.

ψ_{c1}, ψ_{c2}	specify leaf-water-potential dependency parameters [MPa]
Φ_h	dimensionless stability function
b_{VPD}	vpd constant [kPa^{-1}],
e, e_s	ambient and saturation water vapor pressure [kPa], respectively
G_{st}	unstressed stomatal conductance [m s^{-1}]
κ	Karman constant (0.41)
L	Monin-Obukhov length (calculation method is not detailed here) [m]
PAR_s/PAR_{sh}	PAR received by sunlit and shaded leaves, respectively [W m^{-2}]
R_i	minimum bulk canopy stomatal resistances for water vapor [s m^{-1}]
r_{st}	unstressed leaf stomatal resistance [s m^{-1}]
$T_{min}, T_{max}, T_{opt}$	minimum, maximum and optimum T for stomatal opening, respectively ($-5\text{ }^\circ\text{C}$, $40\text{ }^\circ\text{C}$ and $15\text{ }^\circ\text{C}$)
z_r	reference height [m]

References

- Anav, A., Menut, L., Khvorostyanov, D., and Viovy, N., 2011: Impact of tropospheric ozone on the Euro-Mediterranean vegetation. *Glob. Change Biol.* 17, 2342–2359. <https://doi.org/10.1111/j.1365-2486.2010.02387.x>
- Ashmore, M.R., 2005: Assessing the future global impacts of ozone on vegetation. *Plant Cell Environ.* 28, 949–964. <https://doi.org/10.1111/j.1365-3040.2005.01341.x>
- Baldocchi, D.D., Hicks, B.B., and Camara, P., 1987: A canopy stomatal resistance model for gaseous deposition to vegetated surfaces. *Atmos. Environ.* 21, 91–101. [https://doi.org/10.1016/0004-6981\(87\)90274-5](https://doi.org/10.1016/0004-6981(87)90274-5)
- Ball, J.T., Woodrow, I.E., and Berry, J.A., 1987: A model predicting stomatal conductance and its contribution to the control of photosynthesis under different environmental conditions, In (ed.: J. Biggens) Progress in Photosynthesis Research, IV. Martinus Nijhoff, Dordrecht, 221–224. https://doi.org/10.1007/978-94-017-0519-6_48
- Bates, L.M. and Hall, A.E., 1981: Stomatal Closure with Soil-Water Depletion No Associated with Changes in Bulk Leaf Water Status. *Oecologia* 50, 62–65. <https://doi.org/10.1007/BF00378794>
- Bey, I., Jacob, D.J., Yantosca, R.M., Logan, J.A., Field, B., Fiore, A.M., Li, Q., Liu, H., Mickley, L.J., and Schultz, M., 2001: Global modeling of tropospheric chemistry with assimilated meteorology: Model description and evaluation. *J. Geophys. Res.* 106, 23073–23095. <https://doi.org/10.1029/2001JD000807>
- Birkeland, P.W., Shroba, R.R., Burns, S.F., Price, A.B., and Tonkin, P.J., 2003: Integrating soils and geomorphology in mountains—an example from Front Range Colorado. *Geomorphology* 55, 329–344 [https://doi.org/10.1016/S0169-555X\(03\)00148-X](https://doi.org/10.1016/S0169-555X(03)00148-X)
- Brook, J.R., Zhang, L., Li, Y., and Johnson, D., 1999: Description and evaluation of a model of deposition velocities for routine estimates of dry deposition over North America. Part II: review of past measurements and model results. *Atmos. Environ.* 33, 5053–5070. [https://doi.org/10.1016/S1352-2310\(99\)00251-4](https://doi.org/10.1016/S1352-2310(99)00251-4)

- Büker, P., Emberson, L.D., Ashmore, M.R., Cambridge, H.M., Jacobs, C.M.J., Massman, W.J., Müller, J., Nikolov, N., Novak, K., Oksanen, E., Schaub, M., and de la Torre, D., 2007: Comparison of different stomatal conductance algorithms for ozone flux modelling. *Environ. Pollut.* 146, 726–735. <https://doi.org/10.1016/j.envpol.2006.04.007>
- Büker, P., Morrissey, T., Briolat, A., Falk, R., Simpson, D., Tuovinen, J.-P., Alonso, R., Barth, S., Baumgarten, M., Grulke, N., Karlsson, P. E., King, J., Lagergren, F., Matyssek, R., Nunn, A., Ogaya, R., Peñuelas, J., Rhea, L., Schaub, and M., Uddling, 2012: DO3SE modelling of soil moisture to determine ozone flux to forest trees. *Atmos. Chem. Phys.* 12, 5537–5562. <https://doi.org/10.5194/acp-12-5537-2012>
- Chamberlain, A.C., 1967: Transport of Lycopodium Spores and Other Small Particles to Rough Surfaces. Proceedings of the Royal Society of London, Series A, Mathematical and Physical Sciences 296, 45–70. <https://doi.org/10.1098/rspa.1967.0005>
- Chang J.C. and Hanna, S.R., 2004: Air quality model performance evaluation. *Meteorol. Atmos. Phys.* 87, 167–196. <https://doi.org/10.1007/s00703-003-0070-7>
- Cho, S., Makar, P. A., Lee, W. S., Herage, T., Liggio, J., Li, S. M., Wiens, B., and Graham, L., 2009: Evaluation of a unified regional air-quality modeling system (AURAMS) using PrAIRie2005 field study data: The effects of emissions data accuracy on particle sulphate predictions. *Atmos. Environ.* 43, 1864–1877. <https://doi.org/10.1016/j.atmosenv.2008.12.048>
- Emery, C., Jung, J., Downey, N., Johnson, J., Jimenez, M., Yarwood, G., and Morris, R., 2012: Regional and global modeling estimates of policy relevant background ozone over the United States. *Atmos. Environ.* 47, 206–217. <https://doi.org/10.1016/j.atmosenv.2011.11.012>
- Erismann, J., Van Pul, A., and Wyers, P., 1994: Parameterization of surface resistance for the quantification of atmospheric deposition of acidifying pollutants and ozone. *Atmos. Environ.* 28, 2595–2607. [https://doi.org/10.1016/1352-2310\(94\)90433-2](https://doi.org/10.1016/1352-2310(94)90433-2)
- Falge, E., Baldocchi, D., Olson, R., Anthoni, P., Aubinet, Marc, Bernhofer, C., Burba, G., Ceulemans, R., Clement, R., Dolman, H., Granier, A., Gross, P., Grunwald, T., Hollinger, D., Jensen, No., Katul, G., Keronen, P., Kowalski, A., Lai, Ct., Law, Be., Meyers, T., Moncrieff, H., Moors, E., Munger, Jw., Pilegaard, K., Rannik, U., Rebmann, C., Suyker, A., Tenhunen, J., Tu, K., Verma, S., Vesala, T., Wilson, K., and Wofsy, S., 2001: Gap filling strategies for defensible annual sums of net ecosystem exchange. *Agr. Forest Meteorol.* 107, 43–69. [https://doi.org/10.1016/S0168-1923\(00\)00225-2](https://doi.org/10.1016/S0168-1923(00)00225-2)
- Falge, E., Reth, S., Brüggemann, N., Butterbach-Bahl, K., Goldberg, V., Oltchev, A., Schaaf, S., Spindler, G., Stiller, B., Queck, R., Köstner, B., and Bernhofer, C., 2005: Comparison of surface energy exchange models with eddy flux data in forest and grassland ecosystems of Germany. *Ecol. Model.* 188, 174–216. <https://doi.org/10.1016/j.ecolmodel.2005.01.057>
- Fares, S., Vargas, R., Detto, M., Goldstein, A., Karlik, J., Paoletti, E., and Vitale, M., 2013: Tropospheric ozone reduces carbon assimilation in trees: estimates from analysis of continuous flux measurements. *Glob. Change Biol.* 19, 2427–2443. <https://doi.org/10.1111/gcb.12222>
- Flemming, J. and Stern, R., 2007: Testing model accuracy measures according to the EU directives – examples using the chemical transport model REM-CALGRID. *Atmos. Environ.* 41, 9206–9216. <https://doi.org/10.1016/j.atmosenv.2007.07.050>
- Fowler, D., Amann, M., Anderson, R., Ashmore, M., Cox, P., Depledge, M., Derwent, D., Grennfelt, P., Hewitt, N., Hov, O., Jenkin, M., Kelly, F., Liss, P., Pilling, M., Pyle, J., Slingo, J., and Stevenson, D., 2008: Ground-level ozone in the 21st century: future trends, impacts and policy implications. Royal Society Policy Document 15/08, London: The Royal Society.
- Global Soil Data Task Group. Global Gridded Surfaces of Selected Soil Characteristics (IGBP-DIS). Data set. Available on-line [<http://www.daac.ornl.gov>] from Oak Ridge National Laboratory Distributed Active Archive Center, Oak Ridge, Tennessee, U.S.A. <https://doi.org/10.3334/ORNLDAAAC/569>
- Gollan, T., Passioura, J.B., and Munns, R., 1986: Soil-Water Status Affects the Stomatal Conductance of Fully Turgid Wheat and Sunflower Leaves. *Aust. J. Plant Physiol.* 13, 459–464. <https://doi.org/10.1071/PP9860459>
- Grell, G.A., Peckham, S.E., Schmitz R., S.A., McKeen, Frost, G., Skamarock, W.C., and Eder, B., 2005: Fully coupled 'online' chemistry in the WRF model. *Atmos. Environ.* 39, 6957–6976.

- Grünhage, L. and Haenel, H.-D., 2008: PLATIN PLant-ATmosphere Interaction model. *Landbauforschung* 319, 85.
- Harmens, H., and Mills, G., 2012: Ozone pollution: Impacts on carbon sequestration in Europe. ICP Vegetation Programme Coordination Centre. CEH Bangor, UK, ISBN: 978-1-906698-31-7.
- Hicks, B.B., 1982: In: Critical assessment document on acid deposition, Chapter VII, Dry deposition, ATDL Contribution file 81/24, Atmospheric Turbulence and Diffusion Laboratory, NOAA, Oak Ridge, Tennessee, USA.
- Hurley, P., 2008: TAPM V4. Part 1: Technical Description. *CSIRO Marine Atmos. Res. Paper* 25, 59.
- Jarvis, P.G. 1976: The interpretation of the variations in leaf water potential and stomatal conductance found in canopies in the field. *Philos. T. Roy. Soc. B* 273, 593–610.
<https://doi.org/10.1098/rstb.1976.0035>
- Karnosky, D.F., Pregitzer, K.S., and Zak, D.R., 2005: Scaling ozone responses of forest trees to the ecosystem level in a changing climate. *Plant Cell Environ.* 28, 965–981.
<https://doi.org/10.1111/j.1365-3040.2005.01362.x>
- Karnosky, D.F., Zak, D.R., Pregitzer, K.S., and Awmack, C.S., 2003: Tropospheric O₃ moderates responses of temperate hardwood forests to elevated CO₂: a synthesis of molecular to ecosystem results from the Aspen FACE project. *Funct. Ecol.* 17, 289–304.
<https://doi.org/10.1046/j.1365-2435.2003.00733.x>
- Kirtman, B., Power, S.B., JAdedoyin, A., Boer, G.J., Bojariu, R., Camilloni, I., Doblas-Reyes, F.J., Fiore, A.M., Kimoto, M., Meehl, G.A., Prather, M. Sarr, A., Schär, C., Sutton, R., van Oldenborgh, G.J., Vecchi, G., Wang, H.J., 2013: Near-term Climate Change: Projections and Predictability. In: Stocker, T.F., Qin, D., Plattner, G.-K., Tignor, M., Allen, S.K., Boschung, J., Nauels, A., Xia, Y., Bex, V., and Midgley, P.M. (eds.), 2013: Climate Change 2013: The Physical Science Basis. Contribution of Working Group I to the Fifth Assessment Report of the Intergovernmental Panel on Climate Change. Cambridge University Press, Cambridge, United Kingdom and New York, NY, USA.
- Klingberg, J., Engardt, M., Uddling, J., Karlsson, P., and Pleijel, H., 2011: Ozone risk for vegetation in the future climate of Europe based on stomatal ozone uptake calculations. *Tellus A* 63, 174–187.
<https://doi.org/10.1111/j.1600-0870.2010.00465.x>
- Kvalevåg, M.M. and G., Myhre, 2013: The effect of carbon-nitrogen coupling on the reduced land carbon sink caused by tropospheric ozone. *Geophys. Res. Lett.* 40, 3227–3231.
<https://doi.org/10.1002/grl.50572>
- Landsman, W.B., 1993: In Astronomical Data Analysis Software and Systems II. In (eds.: Hanisch, R.J., Brissenden, R.J.V., and Barnes, J.), A.S.P. Conference Series, 52, 246.
- Lombardozzi, D., Levis, S., Bonan, G., and Sparks, J.P., 2012: Predicting photosynthesis and transpiration responses to ozone: decoupling modelled photosynthesis and stomatal conductance. *Biogeosciences* 9, 3113–3130. <https://doi.org/10.5194/bg-9-3113-2012>
- Loreto, F. and Fares, S., 2007: Is Ozone Flux Inside Leaves Only a Damage Indicator? Clues from Volatile Isoprenoid Studies. *Plant Physiol.* 143, 1096–1100.
<https://doi.org/10.1104/pp.106.091892>
- Manders, A., van Meijgaard, E., Mues, A., Kranenburg, R., van Ulft, L.H., and Schaap, M., 2012: The impact of differences in large-scale circulation output from climate models on the regional modeling of ozone and PM. *Atmos. Chem. Phys.* 12, 9441–9458.
<https://doi.org/10.5194/acp-12-9441-2012>
- Menut, L., Bessagnet, B., Khvorostyanov, D., Beekmann, M., Blond, N., Colette, A., Coll, I., Curci, G., Foret, G., Hodzic, A., Mailler, S., Meleux, F., Monge, J.-L., Pison, I., Siour, G., Turquety, S., Valari, M., Vautard, R., and Vivanco, M.G., 2013: CHIMERE 2013: a model for regional atmospheric composition modeling. *Geosci. Model Dev.* 6, 981–1028.
<https://doi.org/10.5194/gmd-6-981-2013>
- Mészáros, R., Szinyei, D., Vincze, C., Lagzi, I., Turányi, T., Haszpra, L., and Tomlin, A.S., 2009: Effect of the soil wetness state on the stomatal ozone fluxes over Hungary. *Int. J. Environ. Pollut.* 36, 180–194. <https://doi.org/10.1504/IJEP.2009.021825>
- Meyers T.P. and Baldocchi, D.D., 1988: A comparison of models for deriving dry deposition fluxes of O₃ and SO₂ to a forest canopy. *Tellus B* 40, 270–284.
<https://doi.org/10.3402/tellusb.v40i4.15916>

- Misson, L., Panek, J.A. and Goldstein, A.H., 2004: A comparison of three approaches to modeling leaf gas exchange in annually drought-stressed ponderosa pine forests. *Tree Physiol.* 24, 529–541. <https://doi.org/10.1093/treephys/24.5.529>
- Monson, R.K., Turnipseed, A.A., Sparks, J.P., Harley, P.C., Scott-Denton, L.E., Sparks, K.L., and Huxman, T.E., 2002: Carbon sequestration in a high-elevation subalpine forest. *Glob. Change Biol.* 8, 1–20. <https://doi.org/10.1046/j.1365-2486.2002.00480.x>
- Moussiopoulos N. and Douros, I., 2005: Efficient calculation of urban scale air pollutant dispersion and transformation using the OFIS model within the framework of CityDelta. *Int. J. Environ. Pollut.* 24, 64–74. <https://doi.org/10.1504/IJEP.2005.007385>
- Neter, J., Wasserman, W., and Whitmore, G.A., 1988: Applied statistics. Allyn and Bacon, Inc., 3rd edition, 1006.
- New, M., Lister, D., Hulme, M., and Makin, I., 2002: A high-resolution data set of surface climate over global land areas. *Climate Res.* 21, 1–25. <https://doi.org/10.3354/cr021001>
- Niyogi, D.S., Raman, S., and Alapaty, K., 1998: Comparison of Four Different Stomatal Resistance Schemes Using FIFE Data. Part II: Analysis of Terrestrial Biospheric–Atmospheric Interactions. *J. Appl. Meteor.* 37, 1301–1320. [https://doi.org/10.1175/1520-0450\(1998\)037<1301:COFDSR>2.0.CO;2](https://doi.org/10.1175/1520-0450(1998)037<1301:COFDSR>2.0.CO;2)
- Padro, J., den Hartog, G., and Neumann, H.H., 1991: An investigation of the ADOM dry deposition module using summertime O₃ measurements above a deciduous forest. *Atmos. Environ.* 25, 1689–1704. [https://doi.org/10.1016/0960-1686\(91\)90027-5](https://doi.org/10.1016/0960-1686(91)90027-5)
- Pan, Y., Birdsey, R.A., Fang, J., Houghton, R., Kauppi, P.E., Kurz, W.A., Phillips, O.L., Shvidenko, A., Lewis, S.L., Canadell, J.G., Ciais, P., Jackson, R.B., Pacala, S., McGuire, A.D., Piao, S., Rautiainen, A., Sitch, S., and Hayes, D., 2011: A Large and Persistent Carbon Sink in the World's Forests. *Science* 333, 6045, 988–993. <https://doi.org/10.1126/science.1201609>
- Pereira, A.R., 2004: The Priestley–Taylor parameter and the decoupling factor for estimating reference evapotranspiration. *Agr. Forest Meteorol.* 125, 305–313. <https://doi.org/10.1016/j.agrformet.2004.04.002>
- Pio, C.A., Feliciano, M.S., Vermeulen, A.T., and Sousa, E.C., 2000: Seasonal variability of ozone dry deposition under southern European climate conditions, in Portugal. *Atmos. Environ.* 34, 195–205. [https://doi.org/10.1016/S1352-2310\(99\)00276-9](https://doi.org/10.1016/S1352-2310(99)00276-9)
- Schaap, M., Timmermans, R.M.A., Sauter, F.J., Roemer, M., Velders, G.J.M., Boersen, G.A.C., Beck, J.P., and Builtjes, P.J.H., 2008: The LOTOS–EUROS model: description, validation and latest developments. *Int. J. Environ. Pollut.* 32, 270–290. <https://doi.org/10.1504/IJEP.2008.017106>
- Schütz, H.-U., 2005: Pocket gopher – Actor under the stage. Studies on Niwot Ridge, Colorado Front Range, U.S.A. In: (eds.: Broll, G., Keplin, B.), Mountain Ecosystems: Studies in Treeline Ecology, Springer-Verlag, Berlin Heidelberg https://doi.org/10.1007/3-540-27365-4_6
- Simpson, D., Benedictow, A., and Berge, H., 2012: The EMEP MSC-W chemical transport model – technical description. *Atmos. Chem. Phys.* 12, 7825–7865. <https://doi.org/10.5194/acp-12-7825-2012>
- Sitch, S., Cox, P.M., Collins W.J., and Huntingford, C., 2007: Indirect radiative forcing of climate change through ozone effects on the land-carbon sink. *Nature* 448, 791–794. <https://doi.org/10.1038/nature06059>
- Smyth, S.C., Jiang, W., Roth, H., Moran, M.D., Makar, P.A., Yang, F., Bouchet, V., and Landry, H., 2009: A comparative performance evaluation of the AURAMS and CMAQ air-quality systems. *Atmos. Environ.* 43, 1059–1070. <https://doi.org/10.1016/j.atmosenv.2008.11.027>
- Stern, R., 2009: *Das chemische Transportmodell REM-CALGRID*. Model description. FU Berlin, 28. Available: www.geo.fu-berlin.de/met/ag/trumf/RCG/RCG-Beschreibung.pdf?1373749582
- Stern, R., Builtjes, P., Schaap, M., Timmermans, R., Vautard, R., Hodzic, A., Memmesheimer, M., Feldmann, H., Renner, E., Wolke, R., and Kerschbaumer, A., 2008: A model inter-comparison study focussing on episodes with elevated PM₁₀ concentrations. *Atmos. Environ.* 42, 4567–4588. <https://doi.org/10.1016/j.atmosenv.2008.01.068>
- Tang, H., Pang, J., Zhang, G., Takigawa, M., Liu, G., Zhu, J., and Kobayashi, K., 2014: Mapping ozone risks for rice in China for years 2000 and 2020 with flux-based and exposure-based doses. *Atmos. Environ.* 86, 74–83. <https://doi.org/10.1016/j.atmosenv.2013.11.078>

- Tuovinen, J.-P., 2009: Ozone flux modelling for risk assessment: status and research needs. *iForest – Biogeosci. Forestry* 2, 34–37. Online available: www.sisef.it/forest/show.php?id=485
- Turnipseed, A.A., Anderson, D.E., Blanken, P.D., Baugh, W., and Monson, R.K., 2003: Airflows and turbulent flux measurements in mountainous terrain. Part 1. Canopy and local effects. *Agr. Forest Meteorol.* 119, 1–21. [https://doi.org/10.1016/S0168-1923\(03\)00136-9](https://doi.org/10.1016/S0168-1923(03)00136-9)
- Turnipseed, A.A., Blanken, P.D., Anderson, D.E., and Monson, R.K., 2002: Energy budget above a high-elevation subalpine forest in complex topography. *Agr. Forest Meteorol.* 110, 177–201. [https://doi.org/10.1016/S0168-1923\(01\)00290-8](https://doi.org/10.1016/S0168-1923(01)00290-8)
- Turnipseed, A.A., Burns, S.P., Moore, D.J.P., Hu, J., Guenther, A.B., and Monson, R.K., 2009: Controls over ozone deposition to a high elevation subalpine forest. *Agr. Forest Meteorol.* 149, 1447–1459. <https://doi.org/10.1016/j.agrformet.2009.04.001>
- Uddling, J., Hall, M., Wallin, G., and Karlsson, P.E., 2005: Measuring and modelling stomatal conductance and photosynthesis in mature birch in Sweden. *Agri. Forest Meteorol.* 132, 115–131. <https://doi.org/10.1016/j.agrformet.2005.07.004>
- Van Loon, M., Vautard, R., Schaap, M., Bergström, R., Bessagnet, B., Brandt, J., Builtjes, P.J.H., Christensen, J.H., Cuvelier, K., Graf, A., Jonson, J.E., Krol, M., Langner, J., Roberts, P., Rouil, L., Stern, R., Tarrasón, L., Thunis, P., Vignati, E., White, L., and Wind, P., 2007: Evaluation of long-term ozone simulations from seven regional air quality models and their ensemble. *Atmos. Environ.* 41, 2083–2097. <https://doi.org/10.1016/j.atmosenv.2006.10.073>
- Van Wijk, M.T., Dekker, S.C., Bouten, W., Bosveld, F.C., Kohsiek, W., Kramer, K., and Mohren, G.M.J., 2000: Modeling daily gas exchange of a Douglas-fir forest: comparison of three stomatal conductance models with and without a soil water stress function. *Tree Physiol.* 20, 115–122. <https://doi.org/10.1093/treephys/20.2.115>
- Vautard, R., Builtjes, P.H.J., Thunis, P., Cuvelier, K., Bedogni, M., Bessagnet, B., Honoré, C., Moussiopoulos, N., Pirovano G., Schaap, M., Stern, R., Tarrason, L., and Van Loon, M., 2007: Evaluation and intercomparison of Ozone and PM10 simulations by several chemistry transport models over four European cities within the CityDelta project. *Atmos. Environ.* 41, 173–188. <https://doi.org/10.1016/j.atmosenv.2006.07.039>
- Wesely, M., 1989: Parameterization of surface resistance to gaseous dry deposition in regional-scale, numerical models. *Atmos. Environ.* 23, 1293–1304. [https://doi.org/10.1016/0004-6981\(89\)90153-4](https://doi.org/10.1016/0004-6981(89)90153-4)
- Wesely, M.L. and Hicks, B.B., 1977: Some factors that effect the deposition rates of sulfur dioxide and similiar gases on vegetation. *J. Air Pollut. Control Assoc.* 27, 1110–1116. <https://doi.org/10.1080/00022470.1977.10470534>
- World Meteorological Organization, 2008: Guide to meteorological instruments and methods of observation, Geneva, Switzerland: Secretariat of the World Meteorological Organization.
- Wu, Z., Wang, X., Chen, F., Turnipseed, A.A., Guenther, A.B., Niyogi D., Charusombat, U., Xia, B., Munger, J.W. and Alapaty, K., 2011: Evaluating the calculated dry deposition velocities of reactive nitrogen oxides and ozone from two community models over a temperate deciduous forest. *Atmos. Environ.* 45, 2663–2674. <https://doi.org/10.1016/j.atmosenv.2011.02.063>
- Zhang, L., Brook, J.R., and Vet, R., 2003: A revised parameterization for gaseous dry deposition. *Atmos. Chem. Phys.* 3, 2067–2082. <https://doi.org/10.5194/acp-3-2067-2003>
- Zhang, L., Moran, M.D., Makar, P.A., Brook, J.R., and Gong, S., 2002: Modelling gaseous dry deposition in AURAMS: a unified regional air-quality modelling system. *Atmos. Environ.* 36, 537–560. [https://doi.org/10.1016/S1352-2310\(01\)00447-2](https://doi.org/10.1016/S1352-2310(01)00447-2)