

# Twelve type II-P supernovae seen with the eyes of *Spitzer*

T. Szalai and J. Vinkó

Department of Optics and Quantum Electronics, University of Szeged, Dóm tér 9., Szeged H-6720, Hungary  
e-mail: [szaszi;vinko]@titan.physx.u-szeged.hu

Received .; accepted ..

## ABSTRACT

**Context.** Core-collapse supernovae (CC SNe), especially those of type II-plateau (II-P), are thought to be important contributors to cosmic dust production. The most obvious indicator of newly-formed and/or pre-existing dust is the time-dependent mid-infrared (MIR) excess coming from the environment of SNe. In the past few years several CC SNe were monitored by the Spitzer Space Telescope in the nebular phase, hundreds of days after explosion. On the other hand, only a few of these objects have been analyzed and published to date.

**Aims.** Our goal was to collect publicly available, previously unpublished measurements on type II-P (or peculiar IIP) SNe from the Spitzer database. The most important aspect was to find SNe observed with the Infrared Array Camera (IRAC) on at least two epochs. The temporal changes of the observed fluxes may be indicative of the underlying supernova, while spectral energy distribution (SED) fitting to the fluxes in different IRAC channels may reveal the physical parameters of the mid-IR radiation, which is presumably caused by warm dust.

**Methods.** The IRS spectra were extracted and calibrated with SPICE, while photometric SEDs were assembled using IRAF and MOPEX. Calculated SEDs from observed fluxes were fit with simple dust models to obtain basic information on the dust presumed as the source of MIR radiation.

**Results.** We found twelve SNe that satisfied the criterion above, observed at late-time epochs (typically after +300 days). In three cases we could not identify any point source at the SN position on late-time IRAC images. We found two SNe, 2005ad and 2005af, which likely have newly formed dust in their environment, while in the other seven cases the observed MIR flux may originate from pre-existing circumstellar or interstellar dust. Our results support the previous observational conclusions that warm new dust in the environment of SNe contributes only marginally to the cosmic dust content.

**Key words.** supernovae: general – supernovae: individual – dust, extinction – infrared: stars

## 1. Introduction

According to theoretical and observational studies during the past four decades, dust grains may be relevant components of the circumstellar matter (CSM) in the environment of core-collapse supernovae (CC SNe), which are the last stages of the life cycles of massive ( $M \geq 8 M_{\odot}$ ) stars. However, while the possibility of dust formation around CC SNe was first raised more than 40 years ago (Cernuschi et al., 1967; Hoyle & Wickramasinghe, 1970), there are still many open questions in this topic. In the local Universe, intense mass-loss processes of asymptotic giant branch (AGB) stars are thought to be the primary sources of dust. At the same time, the large observable amount of dust in high-redshift galaxies is hard to explain with AGB stars, especially because their formational timescale is longer than the age of these distant galaxies (there are some detailed reviews about this topic, see e. g. Dwek & Cherchneff, 2011; Gall et al., 2011).

This is the point where CC SNe become relevant as major sources of dust in the early Universe. The lifetimes of their progenitors are usually shorter than  $\sim 1$  Gyr (there are dust-rich high- $z$  galaxies with this age, see e. g. Maiolino et al., 2004; Dwek et al., 2007). The classical models of dust production rates of CC SNe (Kozasa et al., 1989; Todini & Ferrara, 2001; Nozawa et al., 2003; Morgan & Edmunds, 2003) all support this theory, predicting very similar masses ( $0.1-1 M_{\odot}$ ) of newly formed dust. In more recent studies Bianchi & Schneider (2007); Nozawa et al. (2007); Kozasa et al. (2009); Silvia et al. (2010) also presented similar results.

An important conclusion of the latter papers is that the amount and the basic properties of the dust formed in the ejecta depend strongly on the type of the progenitor, especially the thickness of its outer H and/or He layers. As Kozasa et al. (2009) showed, a thicker outer envelope results in a lower expansion velocity and higher gas density in the deeper layers that contain the condensable elements (C, O, Mg, Al, Si). Therefore, larger ( $\geq 0.03 \mu\text{m}$ ) grains are able to form. This in turn means a larger initial dust mass and also a higher survival rate of the grains. This rate is also increased by the delayed arrival of the reverse shock at the dust-forming region (because of the lower gas density in the shocked region). Based on these theoretical expectations, type II-P SNe are the best candidates for dust formation among CC SNe. Calculations of dust production efficiencies (Gall et al., 2011) also show that the mass range of  $8-20 M_{\odot}$  (which is thought to be the typical progenitor mass range of II-P SNe) is the most important for all SNe.

However, grain formation in the expanding and cooling ejecta is not the only way to find dust around CC SNe. If there is a relatively dense CSM around the progenitor (as it is in type II<sub>n</sub> SNe), it has probably been formed via mass-loss processes from the progenitor. This pre-existing matter also contains dust grains and may also permit grain condensation interacting with the forward shock (see more details e. g. in Fox et al., 2010, 2011).

Although the results of different models seem to be concordant, observations of CC SNe in the local Universe do not support the prediction of the intensive dust production in these objects. Optical and mid-infrared analysis of the famous SN

1987A in the Large Magellanic Cloud (LMC) revealed  $\sim 10^{-4} M_{\odot}$  of newly formed dust in the ejecta a few hundred days after explosion (see e. g. Danziger et al., 1989, 1991; Lucy et al., 1989, 1991; Roche et al., 1993; Wooden et al., 1993), which is orders of magnitude lower than the value predicted by theoretical studies. Similar results were found in other CC SNe studied in the past two decades based primarily on the mid-IR data of the *Spitzer Space Telescope*, hereafter *Spitzer*. None of these objects were unambiguously found to have more than  $0.01 M_{\odot}$  dust in their environment (see Section 4 for more details).

This controversy has been tried to be resolved in different ways. There is a widespread agreement that theoretical models are not perfect, and there are both micro- and macro-physical effects connected with dust formation that are not understood (see e. g. Cherchneff & Dwek, 2010; Fallest et al., 2011). Circumstellar dust may form optically thick clumps (Lucy et al., 1989), resulting in a dust mass higher by an order of magnitude in numerical calculations (Sugerman et al., 2006; Ercolano et al., 2007; Fabbri et al., 2011), but it is still not a satisfying explanation. There is also a possibility that the missing dust mass is hidden in the form of cold ( $\lesssim 50$  K) grains, whose thermal radiation is mostly invisible for *Spitzer's* instruments. This cold dust should stay mainly in the SN ejecta several years after explosion, in the so-called transitional phase (Sugerman et al., 2012; Tanaka et al., 2012; Temim et al., 2012a,b), or in older supernova remnants (SNRs). Some of the nearby SNRs were observed at mid-IR, far-IR, and submillimeter (sub-mm) wavelengths, but the inferred dust masses vary on a large scale (from  $10^{-4}$  to  $1 M_{\odot}$ ), sometimes even for the same object (see the review of Gall et al., 2011). Recently, observations from the *Herschel Space Observatory* (hereafter *Herschel*) are expected to give reassuring answers. The published results suggest relatively large dust masses:  $0.08 M_{\odot}$  in Cas A (Barlow et al., 2010),  $0.1$ - $10 M_{\odot}$  in N49 in the LMC (Otsuka et al., 2010), and  $0.4$ - $0.7 M_{\odot}$  in SN 1987A (Matsuura et al., 2011); although new measurements on SN 1987A made with the Atacama Pathfinder EXperiment (APEX) at sub-mm wavelengths do not support the presence of such a large amount of dust (Lakicevic et al., 2012).

There are also some other ideas, but they are not supported by any convincing observational evidence. The observed low dust production rates of CC SNe could be compensated with a top-heavy initial mass function (IMF), which might be a characteristic of some early galaxies (e. g. Bromm et al., 2002; Tumlinson, 2006; Michalowski et al., 2010). It is also possible that pair-instability supernovae (PISNe), the assumed fate of stars with progenitor masses of  $140$ - $260 M_{\odot}$  (Heger et al., 2003), could be efficient dust producers in the first galaxies (Nozawa et al., 2003; Gall et al., 2011), but there are still no strong evidence for the existence of these objects. Some authors argue that depending on star-formation history, AGB stars may be significant dust sources in galaxies younger than  $1$  Gyr (Valiante et al., 2009; Dwek & Cherchneff, 2011). There is another interesting idea about possible grain condensation in quasar winds (Elvis et al., 2002). Beyond these ideas, more calculations suggest significant grain growth in the ISM, which may be an acceptable explanation of both the low dust production rates of SNe and the high dust content of distant galaxies (Draine, 2003, 2009; Michalowski et al., 2010; Mattsson & Andersen, 2012; Mattsson et al., 2012).

To get closer to the mystery of the origin of cosmic dust, it is necessary to have a large amount of high-quality observational data. Up to now, there are only  $20$ - $25$  SNe for which we have quantitative pieces of information about their dust content;

see e. g. Fox et al. (2011), Gall et al. (2011), Szalai et al. (2011), and Section 4 for details. Regarding the type II-P SNe, there are less than ten objects with detailed analyses, and we know quite a few examples without detectable dust content. Fox et al. (2011) published the results of a survey to detect MIR excess (the most obvious evidence of warm dust) in the environment of type II<sub>n</sub> SNe. They found late-time emission in ten objects from their sample of  $69$  SNe and concluded that the II<sub>n</sub> subclass represents the largest part of dust-containing SNe (it should be noted that the authors carried out this project during the warm mission of *Spitzer*, so they were able to use only the  $3.6$  and  $4.5 \mu\text{m}$  channels supplemented by optical and near-IR photometry and spectroscopy).

Motivated partly by the work of Fox et al. (2011), our goal is to perform such analyses for type II-P SNe that are thought to be the best candidates for producing newly formed dust. We collect, reduce, and analyze unpublished measurements on CC SNe belonging to the II-P subclass, found in the public *Spitzer* database. In Section 2 we show the steps of data reduction and present the extracted photometric and spectroscopic data. We present observed spectral energy distributions (SEDs) of the studied SNe, and compare them with different dust models (Section 3). We note that although the properties of the cold ISM are better constrained by far-IR and/or sub-mm data, the low angular resolution of the available instruments prevent measurements of extragalactic SNe. The *Spitzer* data we applied in this paper probe only the warm ( $T \sim 200$  -  $1000$  K) dust in the environment of extragalactic SNe. Thus, our study focuses on the presence/absence of warm dust and its physical properties. We discuss the results of the SED fitting in Section 3.2. Finally, we summarize our results and conclusions, and give a brief discussion on the role of type II-P SNe in cosmic dust production.

## 2. Observations and data reduction

We queried the public *Spitzer* database to find type II-P SNe observed with the Infrared Array Camera (IRAC) on at least two epochs. We found  $12$  SNe satisfying this criterion. We also collected observations obtained by *Spitzer's* Multiband Imaging Spectrometer (MIPS) and Infrared Spectrograph (IRS) instruments (not only the spectra but also the broad-band photometric data recorded in peak-up imaging mode, PUI). In addition, we also checked the literature for any other observational data obtained around the same epoch as the *Spitzer* measurements.

### 2.1. Supernova sample observed by *Spitzer*

**SN 2003J** was discovered in NGC 4157 on 2003 January 11.3 UT (dates are in UT thereafter) by Kushida et al. (2003) ( $\sim 16.7$  mag, unfiltered). Ayani et al. (2003) classified 2003J as a normal type-II SN. Using the infrared map of Schlegel et al. (1998), the calculated value of galactic interstellar reddening is  $E(B-V)_{gal} = 0.021$  mag. The estimated distance ( $D$ ) to the host galaxy (based on surface brightness fluctuations) is  $14.7$  Mpc (Tonry et al., 2001).

**SN 2003hn** was discovered in NGC 1448 on 2003 August 25.7 by Evans et al. (2003) ( $V \sim 14.4$  mag). Preliminary spectroscopic analysis by Salvo et al. (2003) showed that 2003hn was a type II-P supernova. Detailed analysis based on optical and near-infrared photometry and optical spectroscopy was carried out by Krisciunas et al. (2009), while Jones et al. (2009) and Olivares et al. (2010) also analyzed the data of SN 2003hn and of other type II-P SNe to obtain precise distances to the host galaxies. We adopt  $18.1$  Mpc as the distance of the SN

**Table 1.** Basic data of the supernovae

Name	RA (J2000)	DEC (J2000)	Galaxy	Date of explosion	MJD – 2 450 000	D (Mpc)	E(B–V) (mag)	References
SN 2003J	12:10:57.7	+50:28:31.8	NGC 4157	2003-01-11 <sup>†</sup>	2651 <sup>†</sup>	14.7	0.021 <sup>‡</sup>	1, 2
SN 2003hn	03:44:36.1	–44:37:49.0	NGC 1448	2003-08-07	2859	18.1	0.19	3, 4, 5
SN 2003ie	12:03:18.1	+44:31:36.8	NGC 4051	2003-08-16	2868	15.5	0.013 <sup>‡</sup>	1, 6, 7, 8
SN 2004A	16:43:01.9	+36:50:12.5	NGC 6207	2004-01-06	3011	20.3	0.06	9
SN 2005ad	02:28:29.4	–01:08:20.0	NGC 941	2005-02-06 <sup>†</sup>	3407 <sup>†</sup>	20.8	0.035 <sup>‡</sup>	1, 10
SN 2005af	13:04:44.1	–49:33:59.8	NGC 4945	2005-01-07	3379	3.9	0.183 <sup>‡</sup>	1, 11
SN 2005cs	13:29:52.8	+47:10:36.1	NGC 5194	2005-06-28	3550	8.4	0.04	12, 13, 14, 15
SN 2006bc	07:21:16.5	–68:59:57.3	NGC 2397	2006-03-24	3819	14.7	0.205 <sup>‡</sup>	1, 7, 16
SN 2006bp	11:53:55.7	+52:21:09.4	NGC 3953	2006-04-07	3833	17.5	0.400	17
SN 2006my	12:43:40.7	+16:23:14.1	NGC 4651	2006-07-26	3943	22.3	0.027 <sup>‡</sup>	1, 18, 19, 20
SN 2006ov	12:21:55.3	+04:29:16.7	NGC 4303	2006-08-16	3964	12.6	0.022 <sup>‡</sup>	1, 7, 19
SN 2007oc	22:56:41.8	–36:46:22.3	NGC 7418A	2007-11-03 <sup>†</sup>	4408 <sup>†</sup>	28.0	0.023 <sup>‡</sup>	1, 21

**References.** (1) Schlegel et al. (1998); (2) Tonry et al. (2001); (3) Jones et al. (2009); (4) Krisciunas et al. (2009); (5) Olivares et al. (2010); (6) Pierce & Tully (1988); (7) Smartt et al. (2009); (8) Harutyunyan et al. (2008); (9) Hendry et al. (2006); (10) Li et al. (2011); (11) Kotak et al. (2006); (12) Pastorello et al. (2006); (13) Baron et al. (2007); (14) Pastorello et al. (2009); (15) Vinkó et al. (2012); (16) Gallagher et al. (2012); (17) Dessart et al. (2008); (18) Solanes et al. (2002); (19) Li et al. (2007); (20) Maguire et al. (2010); (21) Gil de Paz et al. (2007).

**Notes.** <sup>†</sup> From date of discovery (date of explosion is unknown).

<sup>‡</sup> Galactic reddening.

(Krisciunas et al., 2009) and  $t_0 = \text{JD } 2\,452\,859$  as the moment of explosion (Jones et al., 2009), while we use  $E(B - V)_{\text{total}} = 0.19$  mag as the estimated reddening of the host galaxy (Olivares et al., 2010).

**SN 2003ie** was discovered in NGC 4051 on 2003 September 19.8 (Arbour & Boles, 2003) with an apparent brightness of  $\sim 15.0$  mag (unfiltered). Benetti et al. (2003) classified it as a type-II SN, while Harutyunyan et al. (2008) found similarities between some spectral features of SN 2003ie and the peculiar type II-P SNe 1998A and 1987A. Based on data on both the SN and its host galaxy (distance, metallicity, extinction) Smartt et al. (2009) gave  $25 M_{\odot}$  as an upper limit for its progenitor mass. For our studies we adopt  $D = 15.5$  Mpc (Pierce & Tully, 1988; Smartt et al., 2009),  $E(B - V)_{\text{gal}} = 0.013$  mag (Schlegel et al., 1998), and  $t_0 = 2\,452\,868$  (Harutyunyan et al., 2008).

**SN 2004A** was discovered in NGC 6207 on 2004 January 9.8 by the Japanese amateur astronomer K. Itagaki (see Nakano et al., 2004) with a brightness of  $\sim 15.7$  mag (unfiltered). A preliminary optical spectrum obtained by Kawakita et al. (2004) indicated that it was a type-II SN. Based on their detailed optical photometric and spectroscopic analysis, Hendry et al. (2006) found 2004A to be a classical type II-P SN with  $D = 20.3$  Mpc,  $E(B - V)_{\text{total}} = 0.06$  mag, and  $t_0 = 2\,453\,011$ . Maguire et al. (2010) also published optical photometric and spectroscopic data from the photospheric phase.

**SN 2005ad** was discovered in NGC 941 on 2005 February 6.4 by K. Itagaki on unfiltered CCD-images (see Nakano & Itagaki, 2005) with a brightness of  $\sim 17.4$  mag. The very blue continuum on early spectra (Morrell et al., 2005) indicated that 2005ad was discovered in a very early phase, but the exact value of  $t_0$  is still unknown. Lacking detailed studies, classification of 2005ad is difficult, but some authors (Smartt et al., 2009; Li et al., 2011) refer to it as a type II-P SN. We use the values of  $D = 20.8$  Mpc (Li et al., 2011) and  $E(B - V)_{\text{gal}} = 0.06$  mag (Schlegel et al., 1998).

**SN 2005af** appeared in the nearby galaxy NGC 4945 on 2005 February 8.2 with an apparent brightness of  $V = 12.8$  mag (Jacques & Pimentel, 2005). Spectroscopic analysis of

Filippenko & Foley (2005) showed that it was a normal type II-P event. Pereyra et al. (2006) obtained optical polarimetry during the photospheric and the early nebular phase, while Kotak et al. (2006) and Kotak (2008) reported mid-IR data from this period (see details below). From the latter study we adopt  $D = 3.9$  Mpc and  $t_0 = 2\,453\,379$ , and use  $E(B - V)_{\text{gal}} = 0.183$  mag for reddening (Schlegel et al., 1998).

**SN 2005cs** was discovered in the nearby, spectacular Whirlpool Galaxy (M51, NGC 5194) on 2005 June 28.9 by Kloehr et al. (2005). It was classified as a type-II SN by Modjaz et al. (2005). Because of its proximity, it was the target of many observing campaigns. Early-time optical photometry and spectroscopy were presented by Pastorello et al. (2006) and Dessart et al. (2008), while Brown et al. (2007) studied the SN using the *Swift* ultraviolet-optical and X-ray telescopes. SN 2005cs seems to belong to the subtype of low-luminosity,  $^{56}\text{Ni}$ -poor, low-velocity SNe II-P, as shown also by long-term studies of Tsvetkov et al. (2006) (optical photometry), Gnedin et al. (2007) (R-band photometry and polarimetry), and Pastorello et al. (2009) (optical and near-IR photometry, optical spectroscopy). Extensive studies of the first-year data and pre-explosion images resulted in a progenitor mass of  $7\text{--}13 M_{\odot}$  (Maund et al., 2005; Li et al., 2006; Takáts & Vinkó, 2006; Eldridge et al., 2007), while Utrobin & Chugai (2008) determined a significantly higher value ( $17\text{--}19 M_{\odot}$ ). In their more recent work Pastorello et al. (2009) concluded that the progenitor mass should be in the range of  $10\text{--}15 M_{\odot}$ . The distance to the host galaxy, determined via different methods, is scattered between  $5.9\text{--}9.4$  Mpc (Feldmeier et al., 1997; Pastorello et al., 2006; Takáts & Vinkó, 2006; Dessart et al., 2008). Recently, Vinkó et al. (2012) determined its mean value of  $8.4$  Mpc by combining the data of SNe 2005cs and 2011dh in the same galaxy. We adopt this latter value for  $D$  as well as  $t_0 = 2\,453\,550$  (Pastorello et al., 2006), and  $E(B - V)_{\text{total}} = 0.04$  mag (Baron et al., 2007; Dessart et al., 2008).

**SN 2006bc** was discovered in NGC 2397 by R. Martin (see Monard et al., 2006) on 2006 March 24.6; its apparent brightness was  $16.0$  mag (on an unfiltered CCD-image). Early spectra

clearly showed that it was a type-II SN (Patat et al., 2006), but due to the lack of long-term studies it remains unsolved whether it is a II-P or a II-L SN (Smartt et al., 2009; Otsuka et al., 2012). While Smartt et al. (2009) could not identify the progenitor of 2006bc on *HST* archive images, Otsuka et al. (2012) also used *HST* to obtain late-time optical photometry. Brown et al. (2009) also observed it with the *Swift* UVOT detector. Parallel to our work, Gallagher et al. (2012) carried out a complete optical and infrared analysis (see details below). The distance to the host galaxy,  $D = 14.7$  Mpc, is only estimated from its kinematic motion (Smartt et al., 2009). We also adopt  $E(B - V)_{gal} = 0.205$  mag (Schlegel et al., 1998), and  $t_0 = 2\,453\,819$  (Gallagher et al., 2012).

**SN 2006bp**, appearing in NGC 3953, was found by K. Itagaki (see Nakano & Itagaki, 2006a) on 2006 April, 9.6 (16.7 mag, unfiltered). Early spectroscopic (Quimby et al., 2006, 2007; Dessart et al., 2008) and photometric observations – in optical (Quimby et al., 2007; Dessart et al., 2008), UV and X-ray (Immler et al., 2007; Dessart et al., 2008; Brown et al., 2009) – showed that 2006bp was a classical type II-P SN, and it was discovered only a few hours after shock breakout, which is the earliest discovery among type II-P SNe. Adopting the results of Dessart et al. (2008), we used the data  $D = 17.5$  Mpc,  $E(B - V)_{total} = 0.400$  mag, and  $t_0 = 2\,453\,833$ .

**SN 2006my** was discovered in NGC 4651 by K. Itagaki (see Nakano & Itagaki, 2006b) on 2006 November 8.8 with an apparent unfiltered brightness of 15.3 mag, well past maximum light. Analyzing the first spectra after discovery, Stanishev & Nielsen (2006) classified it as a type II-P SN. Li et al. (2007) and Maguire et al. (2010) carried out optical photometric and spectroscopic observations both in the photospheric and in the early nebular phase. From optical spectropolarimetry, Chornock et al. (2010) showed strong late-time asphericities in the inner core of 2006my. Extended studies, based on the analysis of pre- and post-explosion images of *HST* and high-resolution ground-based telescopes, concluded that the progenitor of the SN should have been a red supergiant with a mass between 7–13  $M_{\odot}$  (Li et al., 2007; Leonard et al., 2008; Smartt et al., 2009; Crockett et al., 2011). Solanes et al. (2002) reported  $D = 22.3$  Mpc as the distance of the host galaxy; we used this value, as well as  $t_0 = 2\,453\,943$  as the moment of explosion (Maguire et al., 2010) and  $E(B - V)_{gal} = 0.027$  mag as galactic reddening (Schlegel et al., 1998).

**SN 2006ov**, appearing in NGC 4303, has many similarities with 2006my. It was also found by K. Itagaki (see Nakano & Itagaki, 2006c) on 2006 November 24.9. Its unfiltered apparent brightness was 14.9 mag at the moment of discovery. Similarly to 2006my, 2006ov was a type II-P SN discovered near the end of the plateau phase (Blondin et al., 2006; Li et al., 2007). It was also one of the three CC SNe in which Chornock et al. (2010) found late-time asphericity in the inner ejecta. Li et al. (2007) determined the mass of the progenitor as  $15^{+5}_{-3} M_{\odot}$ , but later works (Smartt et al., 2009; Crockett et al., 2011) gave 10  $M_{\odot}$  as an upper limit. We adopt  $D = 12.6$  Mpc (Smartt et al., 2009) and  $E(B - V)_{gal} = 0.022$  mag (Schlegel et al., 1998), while we estimated  $t_0 = 2\,453\,964$  based on the results of Li et al. (2007).

**SN 2007oc** was discovered in NGC 7418A on 2007 November 3.1 by the Chilean Automatic Supernova Search program (Pignata et al., 2007). Due to the lack of any published photometric or spectroscopic observations, the moment of explosion and its subtype remain unknown; it is mentioned in the ASIAGO Supernova Catalogue as a type II-P SN (Barbon et al., 2008). We adopted  $D = 28.0$  Mpc as the distance of the host

galaxy (Gil de Paz et al., 2007) and  $E(B - V)_{gal} = 0.023$  mag (Schlegel et al., 1998) as the galactic reddening.

## 2.2. Mid-infrared photometry with *Spitzer*

We collected and analyzed all available IRAC post-basic calibrated data (PBCD) on the 12 CC SNe listed above. The scale of those images is  $0.6''/\text{pixel}$ . In some cases, a clear identification of SN was not easy because of the faintness of the target in the vicinity of bright regions. We tried to apply the image-subtraction technique used successfully in some cases to analyze *Spitzer* data of SNe (Meikle et al., 2006, 2007; Kotak et al., 2009). We found pre-explosion images of the host galaxies for only two SNe (2005cs and 2006ov), and their quality was too poor for reliable image subtraction. We also generated some subtracted images using the latest frames as templates, but their applicability was also very limited. Finally, we were able to unambiguously identify a MIR point source in nine cases at the SN position, while in the cases of three SNe (2003hn, 2005cs, and 2006bc) we did not find any sign of a point source, either on the original images or on the subtracted image (however, as we mentioned before, there are some other recent results about SN 2006bc, see details in Section 4). For the nine detected SNe (Fig. 1) we carried out a detailed photometric analysis.

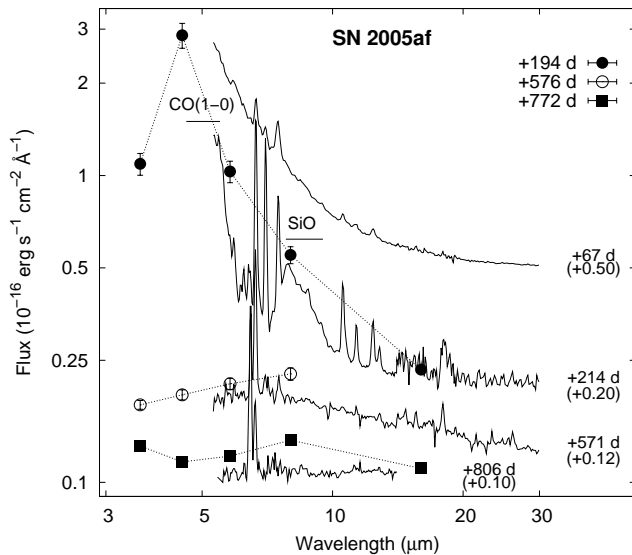
Originally, we planned to apply PSF-photometry using the DAOPHOT package of IRAF<sup>1</sup> to obtain more accurate results. Unfortunately, the bright background flux of the host galaxies, sometimes showing rapid spatial variations, and the lack of relatively bright point sources on the frames prevented us from applying this.

Therefore we carried out simple aperture photometry on the PBCD frames with the PHOT task of the IRAF software package. This was possible because the studied SNe – except of the three mentioned above – were clearly identifiable on IRAC images (see Fig. 1). We generally used an aperture radius of  $3.6''$  and a background annulus from  $3.6''$  to  $8.4''$  (3-3-7 configuration in native  $\sim 1.2''$  IRAC pixels), applied aperture corrections of 1.124, 1.127, 1.143, and 1.234 for the four IRAC channels (3.6, 4.5, 5.8, and  $8.0 \mu\text{m}$ ) as given in the IRAC Data Handbook (Reach et al., 2006). We chose a 2-2-6 configuration for SNe 2003J and 2007oc (aperture corrections: 1.213, 1.234, 1.379, and 1.584), and a 5-12-20 configuration on the images of the bright, nearby SN 2005af (aperture corrections: 1.049, 1.050, 1.058, and 1.068).

There is one object, 2005af, for which MIR data were partly analyzed and published before: Kotak et al. (2006) presented IRS spectra and also IRAC and PUI fluxes up to +433 days, while in Kotak (2008) there is a figure showing an IRS spectrum and IRAC measurements carried out at +571 days. To check the reliability of our reduction technique we also reduced these data and found a good agreement with the results of Kotak et al. (2006) and Kotak (2008). We also completed this dataset with the fluxes determined from the latest measurements found in the *Spitzer* database.

We also carried out aperture photometry using IRAF on late-time MIPS  $24.0 \mu\text{m}$  PBCD frames (image scale  $2.45''/\text{pixel}$ ) for SNe 2003J, 2003ie, 2005af, 2006bp, and 2006my. We used an aperture radius of  $3.5''$  and a background annulus from  $6''$  to  $8''$ , except for SN 2005af, for which we found the 5-5-12 configura-

<sup>1</sup> IRAF is distributed by the National Optical Astronomy Observatories, which are operated by the Association of Universities for Research in Astronomy, Inc., under cooperative agreement with the National Science Foundation.



**Fig. 2.** IRS spectra of SN 2005af. The spectra at different epochs are vertically shifted relative to each other by the amount indicated in the labels next to the spectra.

tion to be the best choice. For SNe 2005af and 2006my, the MIR point sources were also identifiable on available IRS PUI images. Their fluxes were measured using the MOsacker and Point source EXtractor (*MOPEX*<sup>2</sup>) software. All measured fluxes are listed in Table A.1.

### 2.3. Mid-infrared spectroscopy with IRS

We also downloaded the available IRS spectra of the SNe from the *Spitzer* database. Four spectra of SN 2005af – the first three have already been published by Kotak et al. (2006) and Kotak (2008) –, two spectra of SN 2004A, and a single spectrum of SNe 2003ie, 2005ad, 2005cs, 2006bp, and 2006ov were collected this way.

We analyzed the PBCD-frames of the spectroscopic data with the *SPitzer* IRS Custom Extraction software (*SPICE*<sup>3</sup>). Sky subtraction and bad pixel removal were performed using two exposures that contained the spectrum at different locations, which were then subtracted from each other. Order extraction, wavelength- and flux-calibration were performed by applying built-in templates within *SPICE*. Finally, the spectra from the first, second and third orders were combined into a single spectrum with the overlapping edges averaged. In a few cases the sky near the order edges was oversubtracted because of some excess fluxes close to the source, which resulted in spurious negative flux values in the extracted spectrum. These were filtered out using the fluxes in the same wavelength region that were extracted from the adjacent orders.

We found that the spectra of SNe 2005cs and 2006ov are too noisy for further analysis. For the other SNe the spectral and photometric fluxes agree reasonably well. We also compared the extracted spectra with the public data in the Cornell Atlas of

*Spitzer* IRS Sources<sup>4</sup> (CASSIS, Leboutteiller et al., 2011), and found them to be similar to each other.

The spectra of SN 2005af are shown in Figure 2. The three earliest spectra were already published by Kotak et al. (2006) and Kotak (2008). Our spectra agree well with theirs, which serves as a good test for checking our data reduction. In Figure 3 we present the extracted IRS spectra for the other SNe. Although detailed modeling of these spectra is beyond the scope of this paper, we identified spectral features of SiO, and the 1-0 vibrational transition of CO based on line identifications of Kotak et al. (2005) and Kotak et al. (2006). The SiO feature plays an important role in modeling the observed SEDs, while the CO 1-0 transition results in a flux excess at 4.5 micron (see Section 3).

## 3. Analysis

### 3.1. Mid-IR SEDs

Figure 4 shows the mid-IR SEDs of the SNe calculated from IRAC 3.6, 4.5, 5.8, and 8.0  $\mu\text{m}$  fluxes (plotted with available PUI 13.0-18.5  $\mu\text{m}$  and MIPS 24.0  $\mu\text{m}$  fluxes). The continuum fluxes of the reduced IRS spectra match the SED flux levels well.

As is seen in Fig. 4, IRAC fluxes of several SNe (2003J, 2004A, 2005ad, 2005af, 2007oc) show obvious variations in time, while others do not. Based on the analysis of other CC SNe, e. g., SN 2004et (Kotak et al., 2009) or SN 2004dj (Szalai et al., 2011; Meikle et al., 2011), this temporal evolution could be the sign of newly-formed dust grains in the ejecta, but there may be more effects that have to be taken into account to explain this phenomenon.

### 3.2. Fitting of dust models to MIR SEDs

Assuming that the radiation is purely thermal, the main source of mid-IR flux is most likely warm dust. To estimate the minimum amount of dust, we fit analytic dust models to the observed SEDs. Prior to fitting, the observed SED fluxes were dereddened using the galactic reddening law parametrized by Fitzpatrick & Massa (2007) assuming  $R_V = 3.1$  and adopting  $E(B - V)$  values as listed in Section 2.1.

As a first step we examined whether simple, pure blackbody (BB) emission might be consistent with the observed MIR SEDs. Although a pure BB model has little physical significance, we applied it to estimate the *minimum* radius of an optically thick dust sphere that fits the observed SEDs. From the minimum radii we calculated the corresponding velocities assuming homologous expansion (see Table 3). The typical velocities of type II-P SNe are 2-3000  $\text{km s}^{-1}$  for the inner ejecta where dust formation may take place. Therefore, for a larger minimum size it is not possible that the inner ejecta reach the calculated size of the BB. This means that in these cases the minimum radii of the optically thick dust spheres are too large and that consequently, most of the estimated dust mass cannot have originated from newly formed grains.

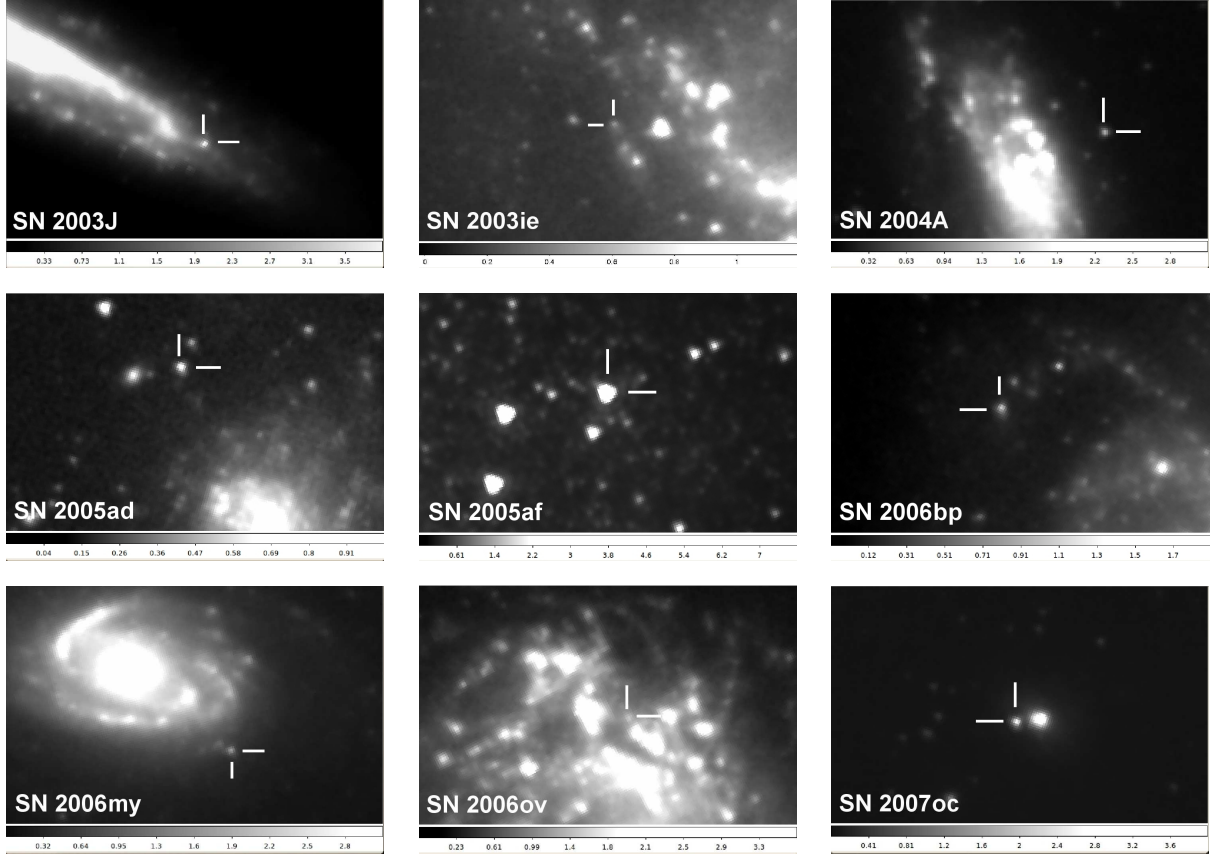
The analytic models were calculated using Eq.1 in Meikle et al. (2007) assuming a homogeneous (constant-density) dust distribution:

$$L_\nu = 2\pi^2 R^2 B_\nu(T) \left[ \tau_\nu^{-2} (2\tau_\nu^2 - 1 + (2\tau_\nu + 1) \exp(-2\tau_\nu)) \right], \quad (1)$$

<sup>4</sup> The Cornell Atlas of *Spitzer*/IRS Sources (CASSIS) is a product of the Infrared Science Center at Cornell University, supported by NASA and JPL.

<sup>2</sup> <http://ssc.spitzer.caltech.edu/dataanalysis/tools/mopex/>

<sup>3</sup> <http://ssc.spitzer.caltech.edu/dataanalysis/tools/spice/>



**Fig. 1.** Type II-P SNe on IRAC post-BCD  $4.5 \mu\text{m}$  images. The FOV is  $100'' \times 60''$ . North is up, and east is to the left.

**Table 2.** IRS observations of the SNe

Object	UT Date	MJD – 2 450 000	$t - t_{expl}$ (days)	ID	Proposal ID (PID)
SN 2003ie	2005-01-14	3385	517	r10557696	3248 (Meikle et al.)
SN 2004A	2004-08-27	3244	233	r10557952	3248 (Meikle et al.)
	2005-02-16	3417	406	r10558208	3248 (Meikle et al.)
SN 2005ad	2005-09-08	3621	215 <sup>†</sup>	r14466304	20256 (Meikle et al.)
SN 2005af	2005-03-17	3446	67	r13413376	237 (Van Dyk et al.)
	2005-08-11	3593	214	r14468096	20256 (Meikle et al.)
	2006-08-03	3950	571	r17969664	30292 (Meikle et al.)
	2007-03-25	4185	806	r17969920	30292 (Meikle et al.)
SN 2006bp	2008-01-18	4483	648	r23111936	40619 (Kotak et al.)

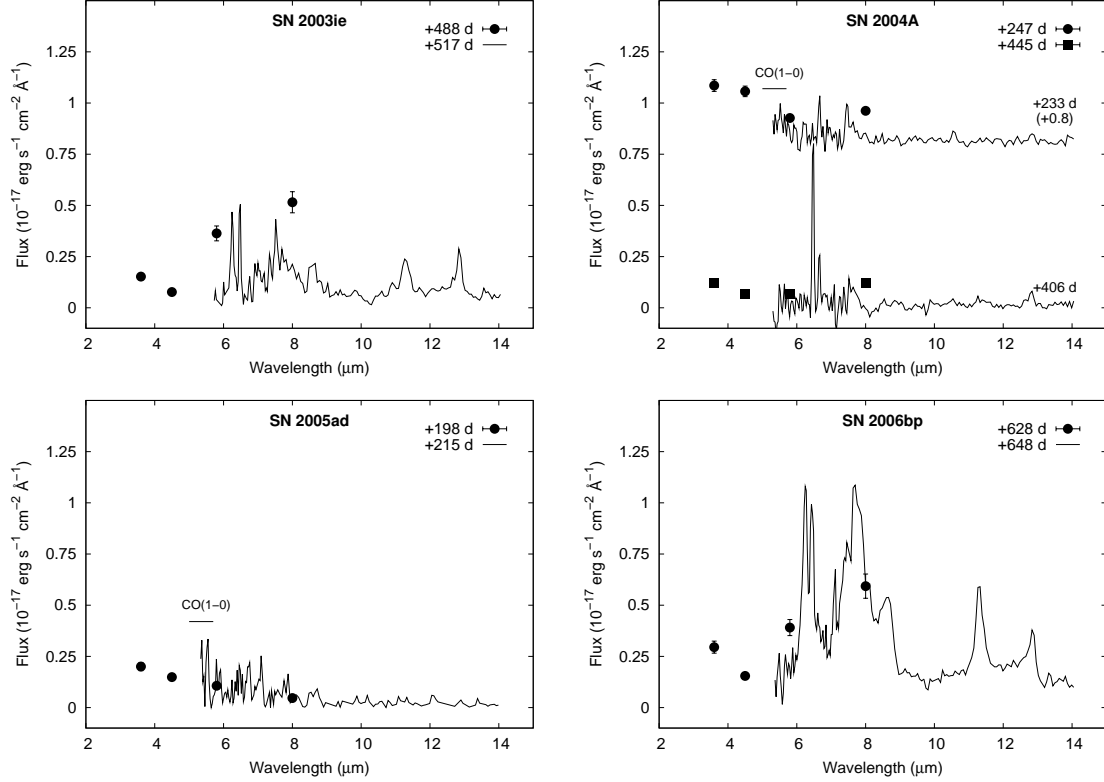
**Notes.** <sup>†</sup> From date of discovery.

where  $R$  is the radius of the dust sphere,  $B_\nu(T)$  is the Planck function,  $T$  is the temperature of the dust, and  $\tau_\nu$  is the optical depth at a given frequency. To estimate the dust optical depth, we adopted the power-law grain-size distribution of Mathis, Rumpf & Nordsieck (1977), hereafter MRN, assuming  $m = 3.5$  for the power-law index and grain sizes between  $a_{min} = 0.005 \mu\text{m}$  and  $a_{max} = 0.05 \mu\text{m}$ .  $\tau_\nu$  can then be calculated as

$$\tau_\nu = \frac{4}{3} \pi k \rho_{grain} \kappa_\nu R \frac{1}{4-m} \left[ a_{max}^{4-m} - a_{min}^{4-m} \right], \quad (2)$$

where  $\rho_{grain}$  is the density of dust grain material,  $k$  is the grain number-density scaling factor, and  $\kappa_\nu$  is the mass absorption coefficient. The dust is assumed to be distributed uniformly within a sphere.  $R$ ,  $T$ , and  $k$  were free parameters during the fitting.

First we calculated the dust models using amorphous carbon (AC) grains. Dust opacity values were taken from Colangeli et al. (1995), while the density of the dust grain material,  $\rho_{grain} = 1.85 \text{ g cm}^{-3}$ , was adopted from Rouleau & Martin (1991). Although we were able to successfully apply these models in most cases, finding adequate solutions for SNe 2005af and 2006my was possible only by assuming silicate dust (C-Si-PAH mixture, MRN-distribution,  $\rho_{grain} = 1.85 \text{ g cm}^{-3}$ , Weingartner & Draine, 2001). The IRS spectra of SN 2005af also show the signs of SiO (see Section 2 and Kotak et al., 2006); but there were no IRS spectra on SN 2006my in the database. On the other hand, the spectra of the other SNe (2003ie, 2004A, 2005ad, 2006bp) that can be fit well with AC models do not show obvious signs of SiO. The parameters of the best-fit ana-



**Fig. 3.** IRS spectra of SNe 2003ie, 2004A, 2005ad, and 2006bp. The spectra of SN 2004A are vertically shifted relative to each other by the amount indicated in the label next to the upper spectrum. Strong and wide emission features in the spectrum of SN 2006bp possibly emerge from nearby interstellar clouds.

lytic models (shown in Figure 5) are collected in Tables 4 and 5.

In a few cases we found that a single temperature model cannot describe the whole observed SED. This is similar to the result of Wooden et al. (1993), who showed that for SN 1987A a hot component ( $T \sim 5\text{--}10\,000$  K) may affect the continuum emission of the warm dust. This hot component is thought to be caused by an optically thick gas in the innermost part of the ejecta. The contribution of such a hot component can be significant at shorter IRAC wavelengths. The modeling of the hot component needs late-time optical or near-IR data taken simultaneously with the *Spitzer* observations. Because of the lack of such data for most of the SNe in our sample, we usually did not include the  $3.6\ \mu\text{m}$  (and sometimes also  $4.5\ \mu\text{m}$ ) fluxes while fitting the dust models. There are two exceptions for which we have found optical photometry obtained close to the IRAC measurements: SN 2004A at 247 days (Hendry et al., 2006), and SN 2006my at 205 days (Maguire et al., 2010). At these epochs we completed the observed SEDs with the optical data and added a hot component to our models (see the fittings in Figure 6, and the parameters in Table 6.).

Figure 5 shows that SNe 2004A, 2005ad, 2005af, and 2007oc show variable excess flux at  $4.5\ \mu\text{m}$  (in these cases we omitted the  $4.5\ \mu\text{m}$  fluxes from the fitting). The excess flux weakens with age, as the ejecta temperature decreases. This trend is also seen in the IRS spectra of SN 2005af (see Section 2 and Kotak et al., 2006). This may be due to the influence of the red wing of the 1-0 vibrational transition of CO at  $4.65\ \mu\text{m}$  (see also Kotak et al., 2005, 2006; Szalai et al., 2011). An alternative explanation for temporarily changing flux at  $4.5\ \mu\text{m}$  may

be the rapid destruction of stochastically heated grains. This effect becomes significant when the grain sizes are below  $0.003\ \mu\text{m}$  (Bocchio et al., 2012). However, as we mentioned above, in the cases studied here the grain sizes are thought to be more than  $0.005\ \mu\text{m}$  (see also Section 1, and Kozasa et al., 2009; Szalai et al., 2011). Therefore the rapid grain destruction process seems to be less significant around these young SNe than it might be in older SNRs.

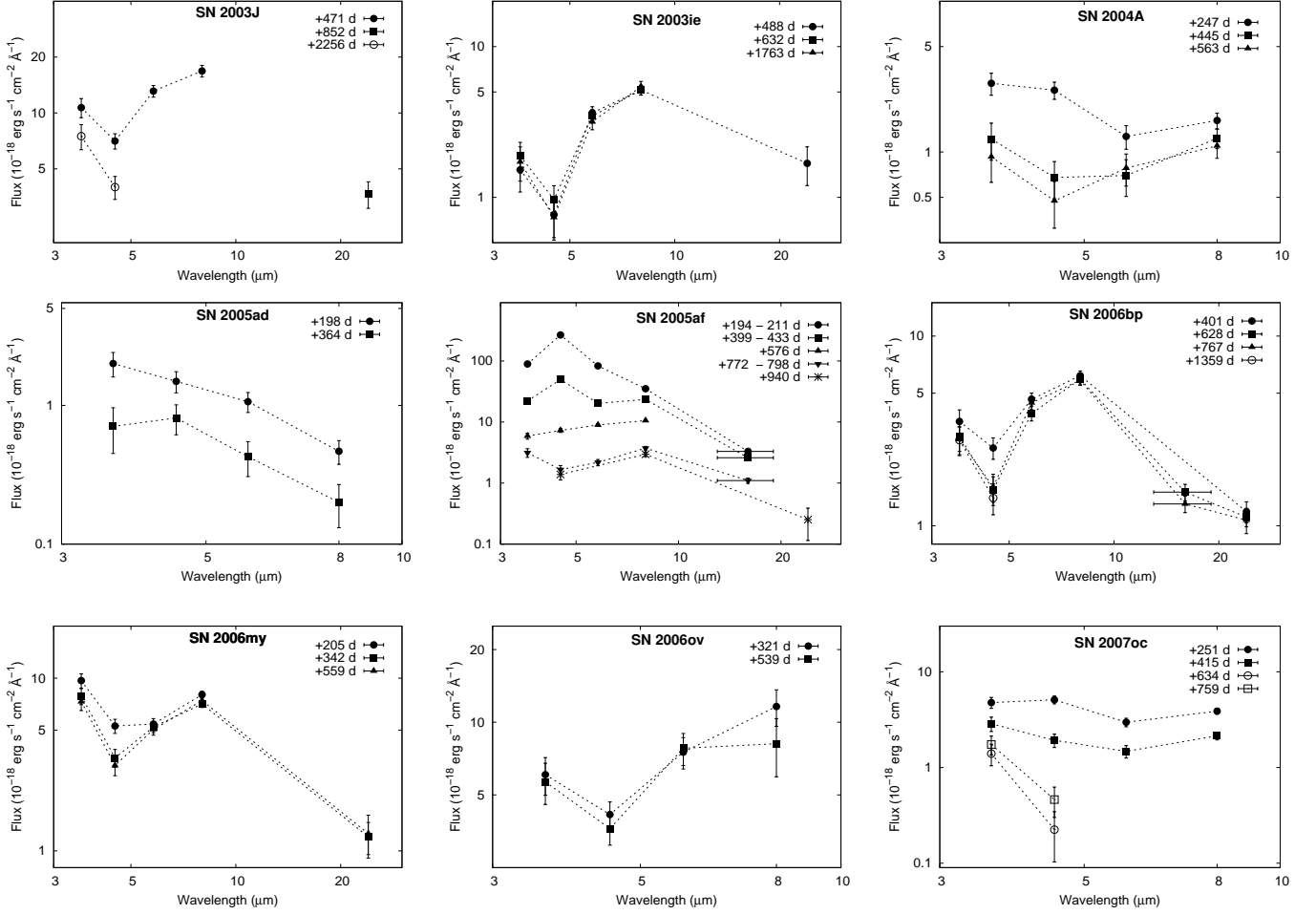
We also found that single-temperature models underestimate the fluxes at  $24\ \mu\text{m}$  when there are MIPS data taken contemporaneously with the IRAC measurements (SNe 2003ie, 2006bp, 2006my). In these cases we added a cold component ( $T \sim 100$  K) to our models, similar to Kotak et al. (2009) and Szalai et al. (2011), which resulted in a reasonably good fit to the whole observed SED. The parameters of the cold BBs are collected in Table 6.

The calculated dust masses for all SNe and all epochs are also collected in Table 4 and 5. Masses were determined using the formula

$$M_d = 4\pi R^2 \tau_\nu / 3\kappa_\nu \quad (3)$$

adopted from Lucy et al. (1989) and Meikle et al. (2007). It should be noted that these masses from analytic models are lower limits (Meikle et al., 2007), because of the implicit assumption that the dust cloud has the lowest possible optical depth. As mentioned before, more realistic dust masses can be obtained only from numerical models for the optically thick dust cloud.

To check this statement and the trustworthiness of our analytic model fitting, we generated some models with the



**Fig. 4.** Mid-IR SEDs of the nine CC SNe at different epochs. Open symbols denote IRAC warm mission data.

three-dimensional radiative-transfer code MOCASSIN 2.02.55. (Ercolano et al., 2003, 2005). This numerical code uses a ray-tracing technique, following the paths of photons emitted from a given source through a spherical shell containing a specified medium. The shell is mapped onto a Cartesian grid allowing light-matter interactions (absorption, re-emission, and scattering events) and to track energy packets until they leave the shell and contribute to the observed SED. It is applicable for reconstructing dust-enriched environments of CC SNe and to determine physical parameters such as grain-size distribution, composition, and mass of dust (see Sugerman et al., 2006; Ercolano et al., 2007; Fabbri et al., 2011; Szalai et al., 2011). The code handles different types of dust heating processes caused not only by photons but also by collisions of grains and electrons (B. Ercolano, personal comm.).

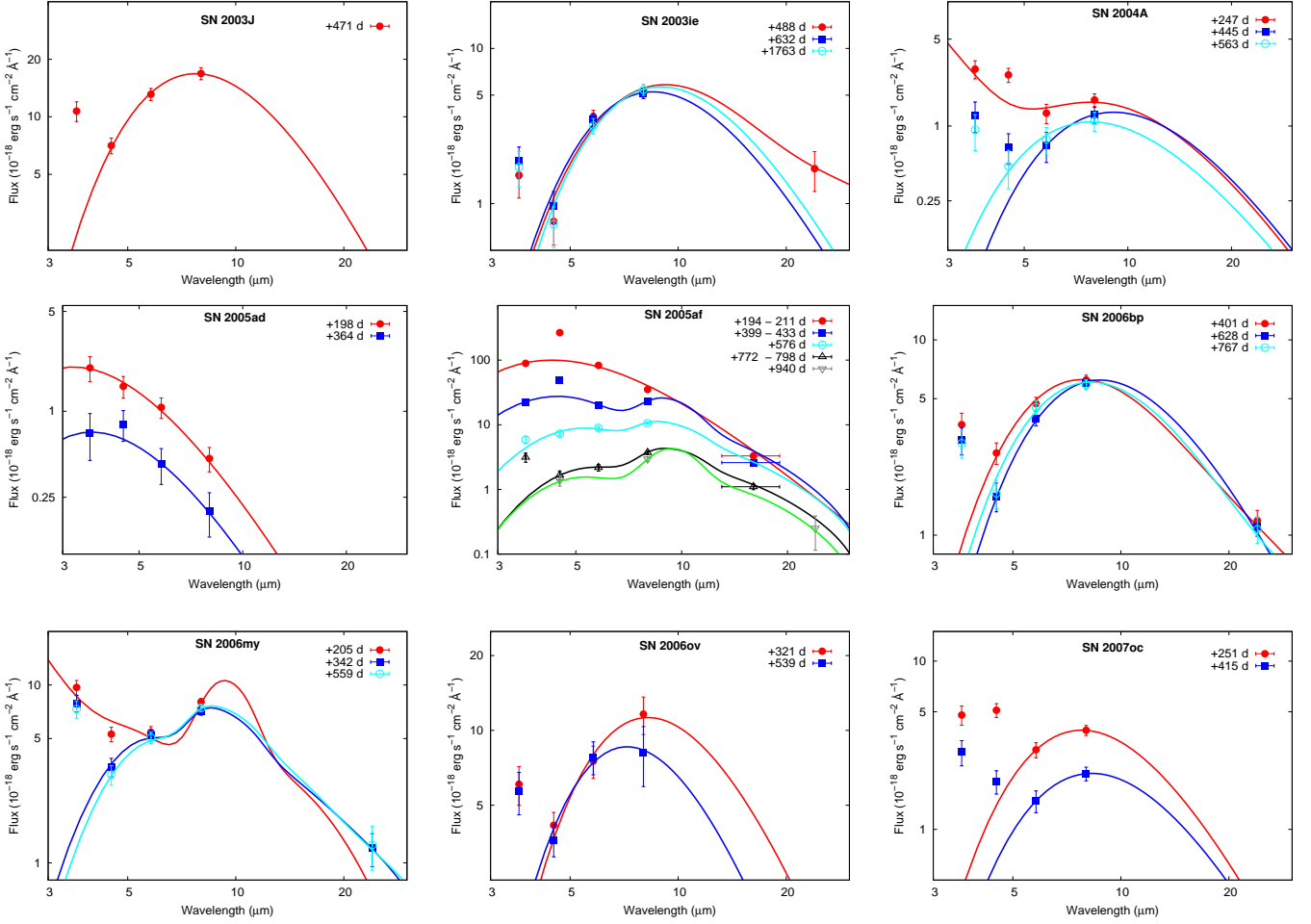
We chose SN 2005af as a test object (at 576 days), for which we could fit both AC and Si-containing dust models. For AC grain composition we used the built-in optical constants from Hanner (1988), while to fit also the flux at 8  $\mu\text{m}$  we found a 0.65:0.35 Si-AC mixture to be the best solution (built-in optical constants of astronomical silicate are taken from Laor & Draine, 1993). We applied the MRN grain-size distribution. The final results of numerical calculations are shown in Table 7, while we compare the best-fitting analytical and numerical models in Figure 7. The excess flux below 3  $\mu\text{m}$  in the MOCASSIN model comes from the assumed hot central source, which was absent in the analytical models.

Although the two methods are very different (the analytic models describe the thermal MIR radiation of the dust, while the calculations of MOCASSIN are based on more detailed radiative transfer), we were able to generate similar SEDs in the MIR region with similar dust shell sizes. For pure AC dust, dust mass derived with the numerical model is an order of magnitude higher than that derived with the analytical model, which is very similar to our earlier results on SN 2004dj (Szalai et al., 2011). Models for silicate dust are slightly different in numerical and in analytic models, and, to obtain the best fit, we had to apply larger grains ( $a = 0.1\text{-}1 \mu\text{m}$ , MRN distribution). Despite these differences, the calculated mass for the silicate dust shell is very close to the value given by the analytic model.

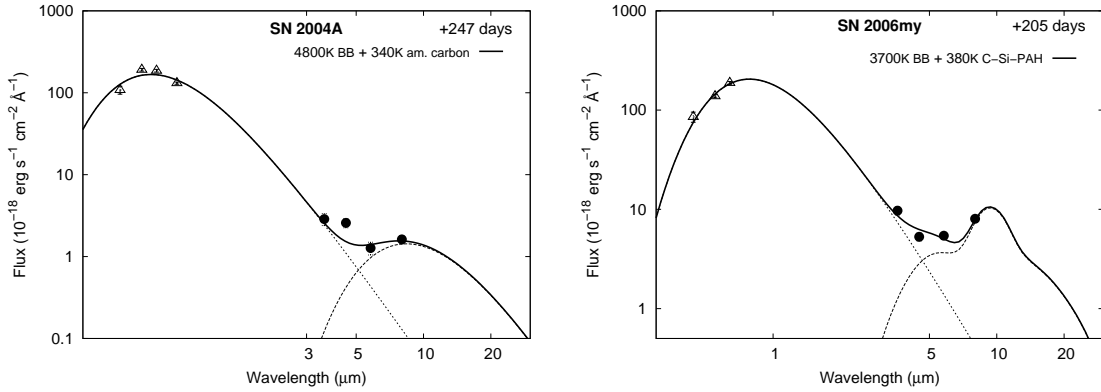
#### 4. Discussion

To understand the origin and heating mechanisms of dust in the environment of SNe, it is important to combine the MIR data with optical and/or near-IR measurements (see e. g. Kotak et al., 2009; Fox et al., 2010; Otsuka et al., 2010; Szalai et al., 2011; Meikle et al., 2011). Observations in X-ray and radio may also provide useful additional information about SN-CSM interactions. However, while *Spitzer* observations on the studied SNe were typically carried out in the nebular phase, there are only a very few additional late-time observations of these objects (see these cases above). Therefore, we can draw our conclusions based on mainly the MIR data analyzed in the previous Section.





**Fig. 5.** Best-fit analytic models on MIR SEDs of the SNe. The  $3.6 \mu\text{m}$  and sometimes the  $4.5 \mu\text{m}$  fluxes are usually not included in the fitting (see text). The fittings that contain hot and warm components for SN 2004A and SN 2006my are shown in Figure 6.



**Fig. 6.** Best-fit models for SN 2004A at 247 days (left) and for SN 2006my at 205 days (right) that contain a warm dust component and a hot blackbody (see text).

As mentioned before, there are three SNe in our sample (2003hn, 2005cs, and 2006bc) for which the available MIR data were not appropriate to resolve the point source at the position of the SN. The case of SN 2006bc is special, because there is a bright source (probably a surrounding H II region) very close to the position of the SN. One would need high-resolution data and more sophisticated methods to extract information on this SN (Otsuka et al., 2012). Parallel to our studies, Gallagher et al.

(2012) carried out a complete optical and infrared data analysis of SN 2006bc based not only on *Spitzer* observations but also *HST* and *Gemini South* data. They found  $M_{\text{dust}} \leq 2 \times 10^{-3} M_{\odot}$  newly formed dust in the ejecta, which is consistent with other similar cases.

The SEDs of the studied SNe and the derived parameters shown in Tables 3, 4, and 5 give guidelines and limits to the possible sources of the detected MIR radiation. We have the highest

**Table 7.** Parameters for the best-fit MOCASSIN models to SN 2005af SED at +576 days.

Composition of dust	$L_*$ ( $10^5 L_\odot$ )	$T_*$ (K)	$R_{in}$ ( $10^{16}$ cm)	$R_{out}$ ( $10^{16}$ cm)	$n_{dust}$ $10^{-6}$ cm $^{-3}$	$M_{dust}$ ( $10^{-5} M_\odot$ )
AC	3.4	7000	-	0.8	150 <sup>†</sup>	18.0
Si:AC (0.65:0.35)	16.9	8000	0.2	1.0	0.02 <sup>‡</sup>	11.0

**Notes.**  $T_*$  and  $L_*$  denote the temperature and the luminosity of the central illuminating blackbody source; the geometry of the dust cloud was assumed to be a spherical shell with inner and outer radii  $R_{in}$  and  $R_{out}$ .

<sup>†</sup> Homogeneous (constant-density) spatial distribution of grains

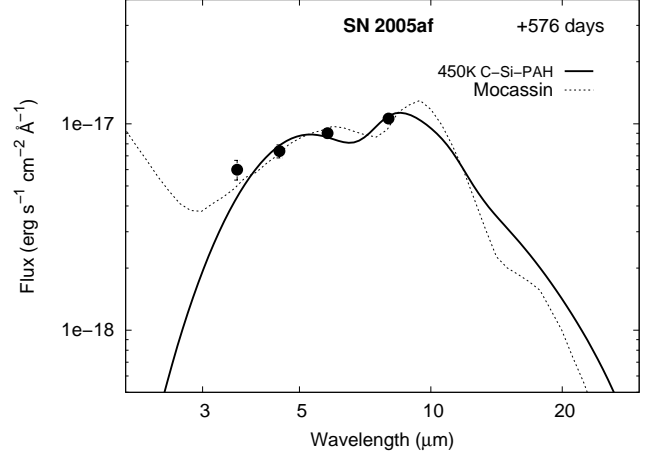
<sup>‡</sup>  $\rho \propto r^{-7}$  density profile for spatial distribution of grains

**Table 3.** Minimum radii and corresponding velocities determined from the best-fit BB-models to observed SEDs.

Object	Epoch (days)	$R_{BB}$ ( $10^{16}$ cm)	$v_{BB}$ km s $^{-1}$
SN 2003J	471 <sup>†</sup>	6.3	15 480
SN 2003ie	488	6.0	14 230
	632	4.9	8975
	1763	6.1	4005
SN 2004A	247	3.4	15 930
	445	3.8	9885
	563	2.2	4520
SN 2005ad	198 <sup>†</sup>	0.3	1755
	364 <sup>†</sup>	0.2	635
SN 2005af	194	0.8	4770
	399	0.4	1160
	576	0.6	1205
	772	0.8	1200
	940	0.6	740
SN 2006bp	401	4.5	12 990
	628	5.5	10 140
	767	5.1	7695
SN 2006my	205	3.8	21 455
	342	3.7	12 520
	559	4.2	8695
SN 2006ov	321	5.1	18 390
	539	3.4	7300
SN 2007oc	250 <sup>†</sup>	5.7	26 285
	415 <sup>†</sup>	4.9	13 665

**Notes.** <sup>†</sup> From date of discovery.

amount of data for SN 2005af, for which a sequence of MIR SEDs is available that shows a monotonically decreasing temperature (see Figure 4). This may be the sign of newly formed, cooling dust. It is also supported by the size of the dust sphere determined from the models: the calculated expansion velocities are lower than 1300 km s $^{-1}$  in the nebular phase, which is low enough to be compatible with the inner ejecta velocities of II-P SNe. This is clearly another argument that most of the dust may have been formed in the ejecta. The calculated dust masses ( $1\text{--}3 \times 10^{-4} M_\odot$ ) agree with the amount of SiO calculated by



**Fig. 7.** Best-fitting Si-containing analytical and numerical models for SN 2005af at +576 days (solid and dotted lines, respectively). The excess flux below 3  $\mu\text{m}$  in the MOCASSIN model is due to the assumed hot central source, which was absent from the analytic models.

Kotak et al. (2006) and with the results of Kotak (2008), and they are also similar to the values found in other SNe.

Another explanation for the observed behavior of MIR SEDs may be the thermal radiation of pre-existing dust in the CSM re-heated by the SN, i. e., the IR-echo (Bode & Evans, 1980; Dwek, 1983, 1985; Sugerman, 2003). We have very little information on the properties of the CSM around this SN. There are no published X-ray or radio measurements, and the relatively high value of the interstellar reddening ( $E(B - V)_{gal} = 0.183$  mag) is caused by the galactic ISM. However, based on Dwek (1983) and Meikle et al. (2006), the shapes of the MIR light curves should be rather flat if there is an IR echo, but the IRAC light curves of SN 2005af decline monotonically in time (see Figure 8). Therefore we conclude that an IR echo is a less probable source of MIR radiation during the observed interval. It is also possible that dust grains condense in a cool dense shell (CDS) that is generated between the forward and reverse shock waves during the interaction of the SN ejecta and the pre-existing CSM. This is usually invoked for type IIc SNe, but it was also taken into account in a few other cases to explain the presence of early or very late MIR-excess (Kotak et al., 2009; Andrews et al., 2010; Meikle et al., 2011). A CDS was also assumed to be the source of the cold dust component in the SEDs of II-P SNe (Szalai et al., 2011).

The shapes of the MIR light curves and the presence of SiO make SN 2005af very similar to the well-studied SN 2004et. In

**Table 4.** Parameters for the best-fit analytic amorphous carbon dust models to the warm components of SEDs.

Epoch (days)	$T_{\text{warm}}$ (K)	$R_{\text{warm}}$ ( $10^{16}$ cm)	$k$ ( $10^{-22}$ )	$M_{\text{dust}}$ ( $10^{-5} M_{\odot}$ )	$L_{\text{warm}}$ ( $10^{39}$ erg s $^{-1}$ )
SN 2003J					
471 <sup>†</sup>	370	6.4	54.5	710	48.8
SN 2003ie					
488 <sup>‡</sup>	310	6.2	60	700	22.2
632	300	10.1	4	200	16.9
1763	280	15.8	1.5	290	19.1
SN 2004A					
247 <sup>‡</sup>	340	3.4	100	160	8.5
445	310	3.9	67	200	8.1
563	370	2.2	350	180	6.2
SN 2005ad					
198 <sup>†</sup>	890	0.4	480	1.0	4.9
364 <sup>†</sup>	750	0.4	190	0.4	1.8
SN 2005af					
194	590	2.3	7.0	4.2	10.2
399	640	0.6	190	1.6	3.3
576	460	0.9	85	2.6	1.5
772	430	0.8	66	0.7	0.3
940	380	0.7	260	4.5	0.6
SN 2006bp					
401 <sup>‡</sup>	370	4.6	100	480	26.2
628	330	6.1	89	1000	29.3
767 <sup>‡</sup>	350	5.2	100	690	27.0
SN 2006my					
205 <sup>‡</sup>	470	3.8	110	88	19.3
342 <sup>‡</sup>	420	4.1	67	230	32.5
559 <sup>‡</sup>	410	4.3	93	370	34.3
SN 2006ov					
321	350	5.1	100	650	25.9
539	350	8.2	3.0	82	15.4
SN 2007oc					
250 <sup>†</sup>	340	8.9	9.0	310	37.8
415 <sup>†</sup>	340	5.5	45	370	23.5

**Notes.** <sup>†</sup> From date of discovery.

<sup>‡</sup> An additional (cold or hot) component was also fit (see details in Table 6 and in the text).

this SN the main source of the warm component is also identified as cooling, newly formed dust in the ejecta (Kotak et al., 2009). Unfortunately, there are no *Spitzer* measurements on SN 2005af at very late epochs, so we could not see whether there is also a rise in IRAC fluxes after +1000 days like in SN 2004et (Kotak et al., 2009; Fabbri et al., 2011).

There are fewer *Spitzer* data for the other eight SNe, and some of them were recorded during the warm mission (since the end of the cryogenic mission in 2009 only the IRAC 3.6 and 4.5  $\mu\text{m}$  channels have been usable). Nevertheless, we may also draw some conclusions for these SNe. Among them we found obvious

**Table 5.** Parameters for the best-fit analytic silicate dust models to the warm components of SEDs.

Epoch (days)	$T_{\text{warm}}$ (K)	$R_{\text{warm}}$ ( $10^{16}$ cm)	$k$ ( $10^{-22}$ )	$M_{\text{dust}}$ ( $10^{-5} M_{\odot}$ )	$L_{\text{warm}}$ ( $10^{39}$ erg s $^{-1}$ )
SN 2005af					
399	550	1.1	200	21	4.3
576	450	1.0	450	31	2.0
772	390	0.8	410	17	0.7
940	400	0.8	160	8.1	0.5
SN 2006my					
205 <sup>†</sup>	380	8.0	22	920	44.9
342 <sup>†</sup>	400	5.5	100	1300	33.8
559 <sup>†</sup>	380	6.2	100	1900	28.4

**Notes.** <sup>†</sup> An additional (cold or hot) component was also fit (see details in Table 6 and in the text).

**Table 6.** Parameters of the additional cold and hot blackbodies.

Object	Epoch (days)	$T$ (K)	$R$ ( $10^{16}$ cm)	$L$ ( $10^{39}$ erg s $^{-1}$ )
Cold component				
SN 2003ie	488	90	29.5	11.6
SN 2006bp	401	110	24.0	6.0
	767	80	42.0	5.1
SN 2006my	342	120	33.5	18.0
	559	90	76.0	28.6
Hot component				
SN 2004A	247	4800	0.045	76.1
SN 2006my	205	3700	0.105	146.3

MIR flux changes in four objects: SNe 2003J, 2004A, 2005ad, and 2007oc (we note that for SN 2003J there is only one complete IRAC measurement, the second one was made during the warm mission). From these, SN 2005ad is the only object for which calculated parameters may indicate dust formation with high probability, because between the two observed epochs the dust model temperature decreased from 890 K to 750 K. The calculated expansion velocities are even lower than for SN 2005af, and the calculated dust masses ( $\sim 10^{-5} M_{\odot}$ ) also agree with the values found in similar cases. Interestingly, for both SNe 2005af and 2005ad, the calculated radii of the dust sphere are roughly constant (or decline slightly) in the nebular phase in spite of the expected expansion. Kotak et al. (2009) found a similar effect in SN 2004et: their explanation was that the dust was contained within an optically thin cloud of optically thick dust clumps that cannot move outward because of the hotter, higher pressure interclump gas.

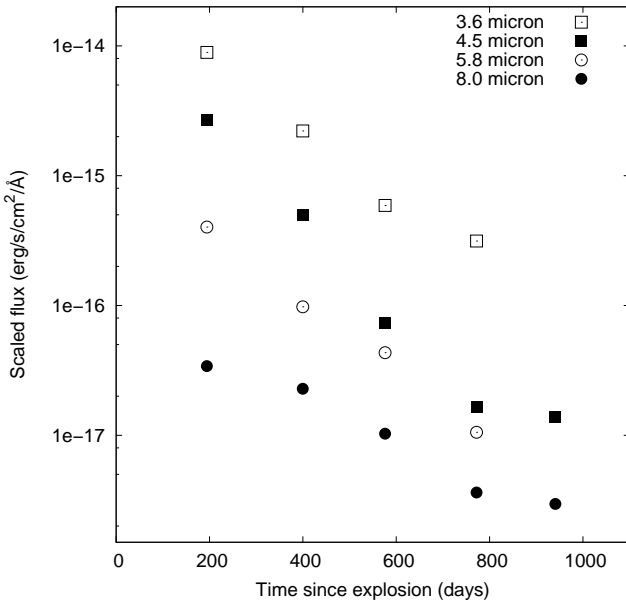
While the flux changes of SNe 2003J, 2004A, and 2007oc suggest that the observed MIR radiation is connected to the SN (at least partly), only a part of it may have been emitted by newly formed grains in the ejecta. The derived dust sphere radii indicate very high expansion velocities that are much higher than the inner ejecta velocities of type II-P SNe in the nebular phase. At

**Table 8.** List of type II-P supernovae with published *Spitzer* data. SNe typed with *italic* were analyzed by our group (this is only partly true for SNe 2004dj and 2005af).

Name	<i>Spitzer</i> data	Epochs	Detectable local dust	Dust mass ( $10^{-5} M_{\odot}$ )	References
SN 2002hh	IRAC, MIPS	590,684,758	Yes - IR echo	$\leq 3600$	1, 2
SN 2003gd	IRAC	496-499,670-681,1264	Yes - new, IR echo	10 – 2000	3, 4
<i>SN 2004dj</i>	IRAC, MIPS, IRS	98 – 1381	Yes - new, CDS,(maybe IR echo)	1 – 80	5, 6
SN 2004et	IRAC, MIPS, IRS	65 – 1240	Yes - new, IR echo	4 – 200	7, 8
<i>SN 2005ad</i> <sup>†</sup>	IRAC, IRS	198, 215, 364	Yes - new	0.5 – 1	<i>this work</i>
<i>SN 2005af</i>	IRAC, MIPS, IRS	194 – 940	Yes - new	8 – 21	9, 10, <i>this work</i>
SN 2006bc	IRAC, MIPS	537-540, 678-687, 753-775	Yes - new	$\leq 200$	11
SN 2007it	IRAC	351, 561, 718, 944	Yes - new	5 – 70	12
SN 2007od	IRAC, MIPS, IRS	300, 455-470, 667	Yes - new (maybe CDS)	17 – 19	13
<i>SN 2003J</i> <sup>†</sup>	IRAC, MIPS	471, 852, 2562	Yes, partly	$\leq 710$	<i>this work</i>
<i>SN 2004A</i>	IRAC, IRS	233-247, 406, 445, 563	Yes, partly	$\leq 200$	<i>this work</i>
<i>SN 2007oc</i> <sup>†</sup>	IRAC	251, 415, 634, 759	Yes, partly	$\leq 370$	<i>this work</i>
<i>SN 2003ie</i>	IRAC, MIPS, IRS	474-488, 517, 632, 1763	No	–	<i>this work</i>
<i>SN 2006bp</i>	IRAC, MIPS, IRS	401-421, 628-671, 768-771, 1361	No	–	<i>this work</i>
<i>SN 2006my</i>	IRAC, MIPS	205, 342-354, 559-568	No	–	<i>this work</i>
<i>SN 2006ov</i>	IRAC, IRS	321-343, 539	No	–	<i>this work</i>

**References.** (1) Barlow et al. (2005); (2) Meikle et al. (2006); (3) Sugerman et al. (2006); (4) Meikle et al. (2007); (5) Szalai et al. (2011); (6) Meikle et al. (2011); (7) Kotak et al. (2009); (8) Fabbri et al. (2011); (9) Kotak et al. (2006); (10) Kotak (2008); (11) Gallagher et al. (2012); (12) Andrews et al. (2011); (13) Andrews et al. (2010).

**Notes.** <sup>†</sup> From date of discovery.



**Fig. 8.** IRAC light curves of SN 2005af: 3.6  $\mu\text{m}$  (open squares), 4.5  $\mu\text{m}$  (filled squares), 5.4  $\mu\text{m}$  (open circles), 8.0  $\mu\text{m}$  (filled circles).

such large radii grain condensation is unlikely. SN 2004A shows changes in the dust temperature, and the calculated luminosities of the dust spheres are not much higher than for SNe 2005af and 2005ad, but the source of most of the MIR radiation may be pre-existing dust or the bulk of grains formed in a CDS. This may be even more valid for SNe 2003J and 2007oc.

For the remaining four SNe (2003ie, 2006bp, 2006my, 2006ov) there is no sign of real changes in the detected MIR fluxes. However, model fits to their SEDs suggest very high expansion velocities and much larger dust masses than for SNe 2005af and 2005ad (note that these values are still lower than the theoretically predicted dust masses). While this does not completely rule out that there is newly formed or pre-existing dust in the close environment of these SNe, the amount of dust should be smaller than the calculated values. We conclude that there are probably other sources of MIR radiation, e. g., dust and/or cold gas clouds within the host galaxies or in the line-of-sight of these SNe. For SN 2006bp, the high value of reddening,  $E(B-V)_{\text{total}} = 0.4$  mag, supports this idea. For the other three SNe the  $E(B-V)$  values are much lower but are estimated only from the galactic reddening map of Schlegel et al. (1998). We also note that the 3'' aperture radii used by IRAC photometry correspond to 20-35 pc at the distances of our SNe, which is 2-3 orders of magnitude larger than the regions that the SN ejecta or shock waves could achieve at the given epochs (it may be less valid for SN 2005af, which is much closer than the other SNe in the sample).

In Table 8 we show all type II-P SNe that have *Spitzer* data analyzed and published to date including the objects presented in this work. As the final list shows, we doubled the number of objects, which might serve as a basis for statistical studies on a larger sample. We separated SNe that have some amount of local dust from those where there is no unambiguous sign for dust. Similar tables about the dust formation statistics of SNe can be found for instance in Fox et al. (2011) and Gall et al. (2011).

## 5. Summary

We collected the public photometric and spectroscopic data of the *Spitzer Space Telescope* on 12 type II-P SNe. We found the

data of nine of these objects to be appropriate for a detailed study, which almost doubles the number of type II-P SNe with a detailed, published MIR data analysis. We fit the observed SEDs with simplified one- or two-component dust models. In SNe 2005ad and 2005af we found cooling temperatures and decreasing luminosities of the warm component that are similar to the values found in other SNe that are thought to have newly formed dust in their environment.

The calculated temperatures for the other SNe do not show strong temporal variation, while the derived luminosities and radii are too high to be compatible with local dust. Moreover, the calculated dust masses in these cases are orders of magnitude higher than the observed amount of dust around the well-studied SNe listed above. The large radius of the warm component may suggest pre-existing dust in these cases, making it unclear if there was new dust formed around these SNe. Nevertheless, theoretical models predict orders of magnitude more newly formed dust in CC SNe. Our conclusions support the previous observational results that warm new dust in the environment of SNe contributes only slightly to cosmic dust content.

At the same time, our study may help to acquire better statistics on the dust formation capabilities of type II-P SNe, and present some objects that may be interesting for additional observations at longer wavelengths. In a few years the SNe for which we concluded the presence of some local dust (2003J, 2004A, 2005ad, 2005af, 2007oc) may show some other signs of dust formation in the transition phase.

## Acknowledgments

We would like to express our thanks to the referee, A. P. Jones, for his valuable comments and suggestions, which helped us to improve the paper. We thank B. Ercolano for sending us her MOCASSIN code ver. 2.02.55, and for her extensive help in running it. We also thank L. Colangeli and V. Mennella for providing the electronic version of their table about mass-extinction coefficients of carbon grains. This work is supported by the Hungarian OTKA Grant K76816, by the European Union and is co-funded by the European Social Fund through the TÁMOP 4.2.2/B-10/1-2010-0012 grant.

## References

- Andrews, J. E., Gallagher, J. S., Clayton, G. C., et al. 2010, *ApJ*, 715, 541  
 Andrews, J. E., Sugerman, B. E. K., Clayton, G. C., et al. 2011, *ApJ*, 731, 47  
 Arbour, R., & Boles, T. 2003, *IAU Circ.*, 8205, 1  
 Ayani, K., Hashimoto, T., & Yamaoka H. 2003, *IAU Circ.*, 8048, 2  
 Barbon, R., Boundi, V., Cappellaro, E., & Turatto, M. 2008, *CDS/ADC Collection of Electronic Catalogues*, 1, 2024  
 Barlow, M. J., Sugerman, B. E. K., Fabbri, J., et al. 2005, *ApJ*, 627, L113  
 Barlow, M. J., Krause, O., Swinyard, B. M., et al. 2010, *A&A*, 518, L138  
 Baron, E., Branch, D., & Hauschildt, P. H. 2007, *ApJ*, 662, 1148  
 Benetti, S., Navasardyan, H., Pastorello, A., et al. 2003, *IAU Circ.*, 8207, 3  
 Bianchi, S., & Schneider, R. 2007, *MNRAS*, 378, 973  
 Blondin, S., Modjaz, M., Kirschner, R., et al. 2006, *Central Bureau Electronic Telegrams*, 757, 1  
 Bocchio, M., Micelotta, E. R., Gautier, A.-L., & Jones, A. P. 2012, *A&A*, 545, 124  
 Bode, M. F., & Evans, A. 1980, *MNRAS*, 193, 21  
 Bromm, V., Coppi, P. S., & Larson, R. B. 2002, *ApJ*, 564, 23  
 Brown, P. J., Dessart, L., Holland, S. T., et al. 2007, *ApJ*, 659, 1488  
 Brown, P. J., Holland, S. T., Immler, S., et al. 2009, *AJ*, 137, 4517  
 Cernuschi, F., Marsicano, F. R., & Codina, S. 1967, *Ann. d'Astrophys.*, 30, 1039  
 Cherchneff, I., & Dwek, E. 2010, *ApJ*, 713, 1  
 Chornock, R., Filippenko, A. V., Li, W., & Silverman, J. M. 2010, *ApJ*, 713, 1363  
 Colangeli, L., Mennella, V., Palumbo, P., et al. 1995, *A&AS*, 113, 561  
 Crockett, R. M., Smartt, S. J., Pastorello, A., et al. 2011, *MNRAS*, 410, 2767  
 Danziger, I. J., Gouiffes, C., Bouchet, P., & Lucy, L. B. 1989, *IAU Circ.*, 4746  
 Danziger, I. J., Lucy, L. B., Bouchet, P., & Gouiffes, C. 1991, in *The Tenth Santa Cruz Workshop in Astronomy and Astrophysics*, ed. S. E. Woosley (New York: Springer-Verlag), 69  
 Dessart, L., Blondin, S., Brown, P. J., et al. 2008, *ApJ*, 675, 644  
 Draine, B. T. 2003, *ARA&A*, 41, 241  
 Draine, B. T. 2009, in *Cosmic Dust - Near and Far*, ASP Conference Series, Vol. 414, ed. T. Henning, E. Grn, & J. Steinacker (San Francisco: Astronomical Society of the Pacific), 453  
 Dwek, E. 1983, *ApJ*, 274, 175  
 Dwek, E. 1985, *ApJ*, 297, 719  
 Dwek, E., & Cherchneff, I. 2011, *ApJ*, 727, 63  
 Dwek, E., Galliano, F., & Jones, A. P. 2007, *ApJ*, 662, 927  
 Eldridge, J. J., Mattila, S., & Smartt, S. J. 2007, *MNRAS*, 376L, 52  
 Elvis, M., Marengo, M., & Karovska, M. 2002, *ApJ*, 567, L107  
 Ercolano, B., Barlow, M. J., Storey, P. J., & Liu X.-W. 2003, *MNRAS*, 340, 1153  
 Ercolano, B., Barlow, M. J., & Storey, P. J. 2005, *MNRAS*, 362, 1038  
 Ercolano, B., Barlow, M. J., & Sugerman, B. E. K. 2007, *MNRAS*, 375, 753  
 Evans, R., Bock, G., Krisciunas, K., & Espinoza, J. 2003, *IAU Circ.*, 8186, 1  
 Fabbri, J., Otsuka, M., Barlow, M. J., et al. 2011, *MNRAS*, 418, 1285  
 Fallest, D. W., Nozawa, T., Nomoto, K., et al. 2011, *MNRAS*, 418, 571  
 Feldmeier, J. J., Ciardullo, R., & Jacoby, G. H. 1997, *ApJ*, 479, 231  
 Filippenko, A. V., & Foley, R. J. 2005, *IAU Circ.*, 8484  
 Fitzpatrick, E. L., & Massa, D. 2007, *ApJ*, 663, 320  
 Fox, O. D., Chevalier, R. A., Dwek, E., et al. 2010, *ApJ*, 725, 1768  
 Fox, O. D., Chevalier, R. A., Skrutskie, M. F., et al. 2011, *ApJ*, 741, 7  
 Gall, C., Andersen, A. C., & Hjorth, J. 2011, *A&A Rev.*, 19, 43  
 Gallagher, J. S., Sugerman, B. E. K., Clayton, G., et al. 2012, *ApJ*, 753, 109  
 Gil de Paz, A., Boissier, S., Madore, B. F., et al. 2007, *ApJS*, 173, 185  
 Gnedin, Yu. N., Larionov, V. M., Konstantinova, T. S., & Kopatskaya, E. N. 2007, *Astronomy Letters*, 11, 736  
 Hanner, M. S. 1988, *NASA Conf. Publ.*, 3004, 22  
 Harutyunyan, A. H., Pfahler, P., Pastorello, A., et al. 2008, *A&A*, 488, 383  
 Heger, A., Frer, C. L., Woosley, S. E., et al. 2003, *ApJ*, 591, 288  
 Hendry, M. A., Smartt, S. J., Crockett, R. M., et al. 2006, *MNRAS*, 369, 1303  
 Hoyle, F., & Wickramasinghe, N. C. 1970, *Nature*, 226, 2  
 Immler, S., Brown, P. J., Milne, P., et al. 2007, *ApJ*, 664, 435  
 Jacques, C., & Pimentel, E. 2005, *IAU Circ.*, 8482  
 Jones, M. I., Hamuy, M., Lira, P., et al. 2009, *ApJ*, 696, 1176  
 Kawakita, H., Kinugasa, K., Ayani, K., & Yamaoka, H. 2004, *IAU Circ.*, 8266, 2  
 Kloehr, W., Muendlein, R., Li, W., et al. 2005, *IAU Circ.*, 8553, 1  
 Kotak, R. 2008, in *Massive Stars as Cosmic Engines*, ed. F. Bresolin, P.A. Crowther & J. Puls, *Proceedings of the International Astronomical Union, IAU Symposium*, 250, 437  
 Kotak, R., Meikle, W. P. S., van Dyk, S. D., et al. 2005, *ApJ*, 628, L123  
 Kotak, R., Meikle, W. P. S., Pozzo, M., et al. 2006, *ApJ*, 651, L117  
 Kotak, R., Meikle, W. P. S., Farrah, D., et al. 2009, *ApJ*, 704, 306  
 Kozasa, T., Hasegawa, H., & Nomoto, K. 1989, *ApJ*, 344, 325  
 Kozasa, T., Nozawa, T., Tominaga, N., et al. 2009, in *Cosmic Dust - Near and Far*, ed. T. Henning, E. Grün, & J. Steinacker (San Francisco: ASP), ASP Conf. Ser., 414, 43  
 Krisciunas, K., Hamuy, M., Suntzeff, N. B., et al. 2009, *AJ*, 137, 34  
 Kushida, R., Nakano, S., Puckett, T., et al. 2003, *IAU Circ.*, 8048, 1  
 Lakicevic, M., van Loon, J. Th., Stanke, T., et al. 2012, *A&A*, 541, L1  
 Laor, A., & Draine, B. T. 1993, *ApJ*, 402, 441  
 Leboutteiler, V., Barry, D. J., Spoon, H. W. W., et al. 2011, *ApJS*, 196, 8  
 Leonard, D. C., Gal-Yam, A., Fox, D. B., et al. 2008, *PASP*, 120, 1259  
 Li, W., Van Dyk, S. D., Filippenko, A. V., et al. 2006, *ApJ*, 641, L1060  
 Li, W., Wang, X., Van Dyk, S. D., et al. 2007, *ApJ*, 661, 1013  
 Li, W., Leaman, J., Chornock, R., et al. 2011, *MNRAS*, 412, 1441  
 Lucy, L. B., Danziger, I. J., Gouiffes, C., & Bouchet, P. 1989, in *Structure and Dynamics of the Interstellar Medium*, ed. G. Tenorio-Tagle et al. (Berlin: Springer), 164  
 Lucy, L. B., Danziger, I. J., Gouiffes, C., & Bouchet, P. 1991, in *The Tenth Santa Cruz Workshop in Astronomy and Astrophysics*, ed. S. E. Woosley (New York: Springer-Verlag), 82  
 Maguire, K., di Carlo, E., Smartt, S. J., et al. 2010, *MNRAS*, 404, 981  
 Maiolino, R., Schneider, R., Oliva, E., et al. 2004, *Nature*, 431, 533  
 Mathis J.S., Rumpel W., & Nordsieck K.H. 1977, *ApJ*, 217, 425  
 Matsuura, M., Dwek, E., Meixner, M., et al. 2011, *Science*, 333, 1258  
 Mattsson, L., & Andersen, A. C. 2012, *MNRAS*, 423, 38  
 Mattsson, L., Andersen, A. C., & Munkhammar, J. D. 2012, *MNRAS*, 423, 26  
 Maund, J., Smartt, S. J., & Danziger, I. J. 2005, *MNRAS*, 364, L33  
 Meikle, W. P. S., Mattila, S., Gerardy, C. L., et al. 2006, *ApJ*, 649, 332  
 Meikle, W. P. S., Mattila, S., Pastorello, A., et al. 2007, *ApJ*, 665, 608  
 Meikle, W. P. S., Kotak, R., Farrah, D., et al. 2011, *ApJ*, 732, 109  
 Michalowski, M. J., Watson, D., & Hjorth, J. 2010, *ApJ*, 712, 942  
 Modjaz, M., Kirschner, R., Challis, P., & Hutchins, R. 2005, *IAU Circ.*, 8555, 1

- Monard, L. A. G., Martin, R., Ponticello, N. J., et al. 2006, IAU Circ., 8693, 1
- Morgan, H. L., & Edmunds, M. G. 2003, MNRAS, 343, 427
- Morrell, N., Hamuy, M., Folatelli, G., & Olivares, F. 2005, IAU Circ., 8482, 2
- Nakano, S., & Itagaki, K. 2005, IAU Circ., 8479
- Nakano, S., & Itagaki, K. 2006, IAU Circ., 8700, 4
- Nakano, S., & Itagaki, K. 2006, IAU Circ., 8773, 1
- Nakano, S., & Itagaki, K. 2006, Central Bureau Electronic Telegrams, 756
- Nakano, S., Itagaki, K., Kushida, R., & Kushida, Y. 2004, IAU Circ., 8265, 1
- Nozawa, T., Kozasa, T., Umeda, H., et al. 2003, ApJ, 598, 785
- Nozawa, T., Kozasa, T., Habe, A., et al., 2007, ApJ, 666, 955
- Olivares E., F., Hamuy, M., Pignata, G., et al. 2010, ApJ, 715 833
- Otsuka, M., van Loon, J. Th., Long, K. S., et al. 2010, A&A, 518, L139
- Otsuka, M., Meixner, M., Panagia, N., et al. 2012, ApJ, 744, 26
- Pastorello, A., Sauer, D., Taubenberger, S., et al. 2006, MNRAS, 370, 1752
- Pastorello, A., Valenti, S., Zampieri, L., et al. 2009, MNRAS, 394, 2266
- Patat, F., Baade, D., & Wang, L. 2006, Central Bureau Electronic Telegrams, 450, 1
- Pereyra, A., Magalhaes, A. M., Rodrigues, C. V., et al. 2006, A&A, 454, 827
- Pierce, M. J., & Tully, R. B. 1988, ApJ, 330, 579
- Pignata, G., Maza, J., Hamuy, M., et al. 2007, Central Bureau Electronic Telegrams, 1114, 1
- Quimby, R. M., Brown, P. J., Caldwell, J., & Rostopchin, S. 2006, Central Bureau Electronic Telegrams, 471, 1
- Quimby, R. M., Wheeler, J. C., Höflich, P., et al. 2007, ApJ, 666, 1093
- Reach, W. T., Surace, J. A., Glaccumet, W. J., et al. 2006, Infrared Array Camera Data Handbook, ver. 3.0 (Spitzer Science Center, California Institute of Technology, Pasadena, California 91125 USA)
- Roche, P. F., Aitken, D. K., & Smith, C. H. 1993, MNRAS, 261, 522
- Rouleau, F., & Martin, P.G. 1991, ApJ, 377, 526
- Salvo, M., Bessel, M., & Schmidt, B. 2003, IAU Circ., 8187
- Schlegel, D. J., Finkbeiner, D. P., & Davis, M. 1998, ApJ, 500, 525
- Silvia, D. W., Smith, B. D., & Schull, J. M. 2010, ApJ, 715, 1575
- Smartt, S. J., Eldridge, J. J., Crockett, R. M., & Maund, J. R. 2009, MNRAS, 395, 1409
- Solanes, J. M., Sanchis, T., Salvador-Solé, E., et al. 2002, AJ, 124, 2440
- Stanishev, V., & Nielsen, T. B. 2006, Central Bureau Electronic Telegrams, 737
- Sugerman, B. E. K. 2003, AJ, 126, 1939
- Sugerman, B. E. K., Ercolano, B., Barlow, M. J., et al. 2006, Science, 313, 196
- Sugerman, B. E. K., Andrews, J. E., Barlow, M. J., et al. 2012, ApJ, 749, 170
- Szalai, T., Vinkó, J., Balog, Z., et al. 2011, A&A, 527, A61
- Takáts, K., & Vinkó, J. 2006, MNRAS, 372, 1735
- Tanaka, M., Nozawa, T., Sakon, I., et al. 2012, ApJ, 749, 173
- Temim, T., Slane, P., Arendt, R. G., & Dwek, E. 2012, ApJ, 745, 46
- Temim, T., Sonnenborn, G., Dwek, E., et al. 2012, ApJ, 753, 72
- Todini, P., & Ferrara, A. 2001, MNRAS, 325, 726
- Tonry, J. L., Dressler, A., Blakeslee, J. P., et al. ApJ, 546, 681
- Tsvetkov, D. Yu., Volnova, A. A., Shulga, A., P., et al. 2006, A&A, 460, 769
- Tumlinson, J. 2006, ApJ, 694, 697
- Utrobin, V. P., & Chugai, N. N. 2008, A&A, 491, 507
- Valiante, R., Schneider, R., Bianchi, S., & Andersen, A. C. 2009, MNRAS, 397, 1661
- Vinkó, J., Takáts, K., Szalai, T., et al. 2012, A&A, 540, A93
- Weingartner, J.C., & Draine, B.T. 2001, ApJ, 548, 296
- Wooden, D. H., Rank, D. M., Bregman, J. D., et al. 1993, ApJS, 88, 477

## Appendix A: Photometry

**Table A.1.** *Spitzer* photometry for the clearly identifiable supernovae in our sample.

UT Date	MJD – 2 450 000	$t - t_{\text{expl}}$ (days)	Flux ( $10^{-20}$ erg s $^{-1}$ cm $^{-2}$ Å $^{-1}$ )					IRS PUI 13.0 - 18.5 $\mu$ m	MIPS 24 $\mu$ m
			3.6 $\mu$ m	IRAC		8.0 $\mu$ m			
			4.5 $\mu$ m	5.8 $\mu$ m					
SN 2003J									
2004-04-27 <sup>a</sup>	3123	471 <sup>†</sup>	1069(126)	706(67)	1311(95)	1684(121)	...	...	
2005-05-13 <sup>a</sup>	3503	852 <sup>†</sup>	...	...	...	...	...	366(59)	
2010-01-17 <sup>b</sup>	5214	2562 <sup>†</sup>	750(116)	398(56)	...	...	...	...	
SN 2003ie									
2004-12-03 <sup>c</sup>	3342	474	...	...	...	...	...	168(48)	
2004-12-17 <sup>d</sup>	3356	488	152(44)	77(23)	363(36)	515(38)	...	...	
2005-05-10 <sup>d</sup>	3500	632	188(44)	97(23)	346(34)	514(38)	...	...	
2008-06-14 <sup>f</sup>	4631	1763	172(44)	74(22)	317(36)	543(45)	...	...	
SN 2004A									
2004-09-10 <sup>d</sup>	3258	247	287(48)	257(34)	127(23)	162(19)	...	...	
2005-03-27 <sup>d</sup>	3456	445	122(34)	68(19)	70(19)	123(18)	...	...	
2005-07-23 <sup>e</sup>	3574	563	93(30)	47(16)	78(19)	110(19)	...	...	
SN 2005ad									
2005-08-23 <sup>e</sup>	3605	198 <sup>†</sup>	200(40)	149(26)	106(17)	47(9)	...	...	
2006-02-05 <sup>e</sup>	3771	364 <sup>†</sup>	71(26)	81(20)	43(12)	20(7)	...	...	
SN 2005af									
2005-07-22 <sup>e</sup>	3573	194	8912(243)	26 644(313)	8039(135)	3414(65)	...	...	
2005-08-08 <sup>e</sup>	3590	211	...	...	...	...	330(33)	...	
2006-02-12 <sup>e</sup>	3778	399	2213(121)	4960(135)	1955(67)	2283(54)	...	...	
2006-03-18 <sup>e</sup>	3812	433	...	...	...	...	260(26)	...	
2006-08-03 <sup>g</sup>	3950	571	...	...	...	...	340(34)	...	
2006-08-08 <sup>g</sup>	3955	576	590(66)	729(53)	867(47)	1028(37)	...	...	
2007-02-20 <sup>g</sup>	4151	772	314(51)	166(27)	211(26)	363(26)	...	...	
2007-03-18 <sup>g</sup>	4177	798	...	...	...	...	110(11)	...	
2007-07-16 <sup>h</sup>	4297	918	...	...	...	...	...	23(13)	
2007-07-24 <sup>h</sup>	4305	926	...	...	...	...	...	28(14)	
2007-08-07 <sup>h</sup>	4319	940	...	138(26)	...	296(25)	...	...	
SN 2006bp									
2007-05-14 <sup>i</sup>	4234	401	355(53)	257(33)	464(36)	618(37)	...	...	
2007-06-03 <sup>i</sup>	4254	421	...	...	...	...	...	119(15)	
2007-12-19 <sup>j</sup>	4453	620	...	...	...	...	150(15)	...	
2007-12-27 <sup>j</sup>	4461	628	295(49)	154(27)	391(34)	593(35)	...	...	
2008-02-07 <sup>j</sup>	4504	671	...	...	...	...	...	111(12)	
2008-05-13 <sup>j</sup>	4600	767	285(48)	160(27)	445(35)	585(36)	...	...	
2008-05-17 <sup>j</sup>	4604	771	...	...	...	...	...	107(16)	
2008-06-05 <sup>j</sup>	4622	789	...	...	...	...	130(13)	...	
2009-12-29 <sup>b</sup>	5194	1361	283(49)	140(26)	...	...	...	...	
SN 2006my									
2007-02-17 <sup>k</sup>	4148	205	967(91)	528(50)	542(41)	803(37)	...	...	
2007-07-03 <sup>j</sup>	4285	342	787(84)	345(41)	520(37)	708(33)	...	...	
2007-07-11 <sup>k</sup>	4292	349	...	...	...	...	...	101(25)	
2007-07-14 <sup>j</sup>	4295	352	...	...	...	...	...	126(25)	
2007-07-23 <sup>k</sup>	4304	361	...	...	...	...	...	133(25)	
2008-02-06 <sup>j</sup>	4502	559	731(82)	312(40)	504(37)	742(35)	...	...	
2008-02-15 <sup>j</sup>	4511	568	...	...	...	...	...	126(35)	
SN 2006ov									
2004-06-10 <sup>a</sup>	3166	-897	508(109)	356(53)	789(114)	822(214)	...	...	
2007-07-03 <sup>j</sup>	4284	321	606(108)	415(53)	752(112)	1162(200)	...	...	
2008-02-06 <sup>j</sup>	4502	539	567(110)	363(53)	780(118)	815(221)	...	...	
SN 2007oc									
2008-07-12 <sup>l</sup>	4659	251 <sup>†</sup>	477(62)	510(48)	297(30)	388(27)	...	...	
2008-12-23 <sup>l</sup>	4823	415 <sup>†</sup>	287(49)	192(31)	147(22)	214(20)	...	...	
2009-07-30 <sup>m</sup>	5042	634 <sup>†</sup>	140(36)	22(12)	...	...	...	...	
2009-12-02 <sup>m</sup>	5167	759 <sup>†</sup>	174(39)	46(16)	...	...	...	...	

**Notes.** <sup>a</sup>PID 69 Fazio et al.; <sup>b</sup>PID 61009 Freedman et al.; <sup>c</sup>PID 3124 Alexander et al.; <sup>d</sup>PID 3248 Meikle et al.; <sup>e</sup>PID 20256 Meikle et al.; <sup>f</sup>PID 484 Gorjian et al.; <sup>g</sup>PID 30292 Meikle et al.; <sup>h</sup>PID 40410 Rieke et al.; <sup>i</sup>PID 30496 Fisher et al.; <sup>j</sup>PID 40619 Kotak et al.; <sup>k</sup>PID 30945 Kenney et al.; <sup>l</sup>PID 50534 Andrews et al.; <sup>m</sup>PID 60071 Andrews et al.

<sup>†</sup> From date of discovery.