

# Non-switchers

# Switchers

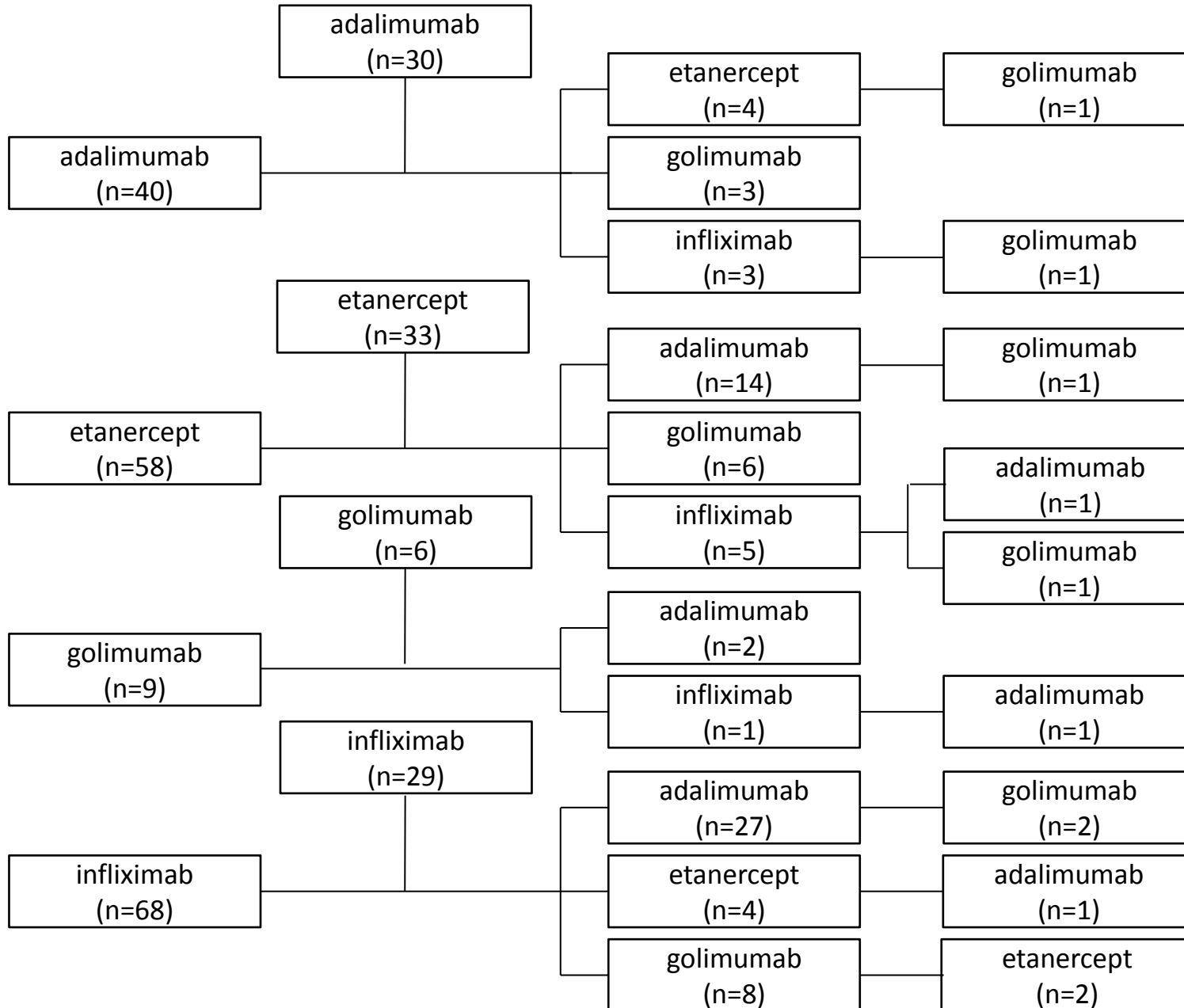


Figure 1.

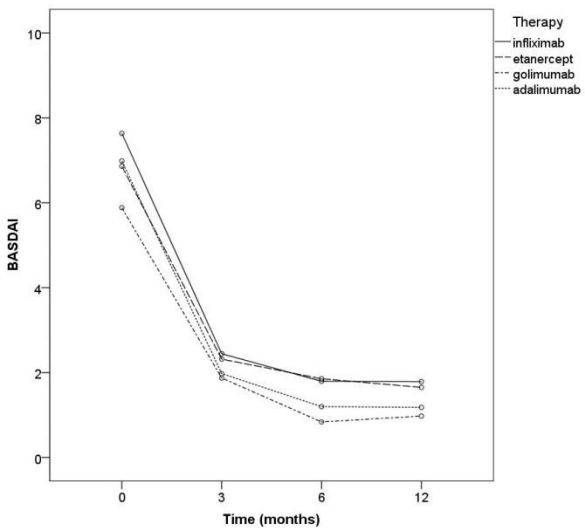
	<b>Non-switchers N=98</b>	<b>Switchers N=77</b>	<b>significance</b>
Age (mean±SD)	38.8±11.2	42.5±12.6	0.049
Women, n (%)	22 (22.4%)	20 (26.3%)	N.S.
Disease duration (mean±SD)	8.72±8.30	8.63±9.02	N.S.
BASDAI (mean±SD)	7.07±1.30	7.11±1.19	N.S.

Age: age of the patients at the beginning of first TNF inhibitor

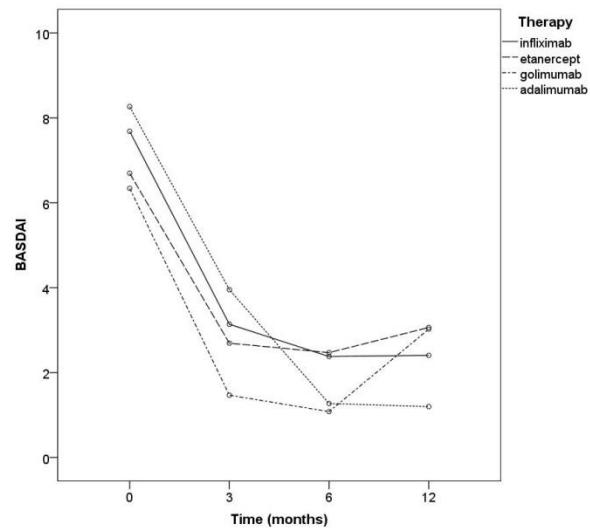
Disease duration: duration between the date of diagnosis and start of first TNF blocker

BASDAI: Bath Ankylosing Spondylitis Disease Activity Index

BASDAI values to first TNFi among non-switchers



BASDAI values to first TNFi among switchers



BASDAI values to second TNFi among switchers

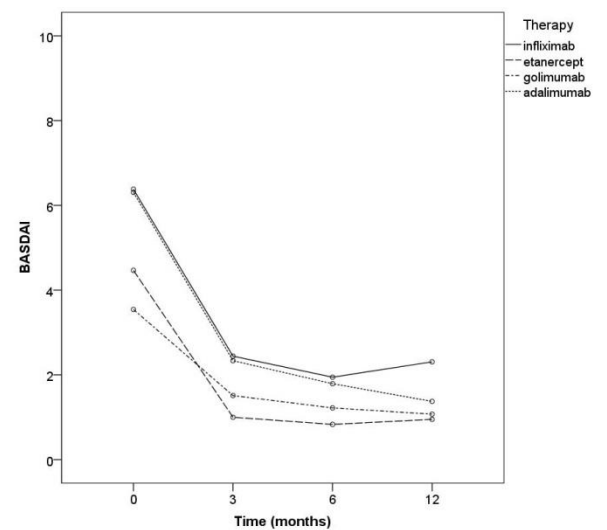


Figure 2.

**First choice treatment**

<b>Cause of switching</b>	adalimumab	etanercept	golimumab	infliximab	total
Inefficacy	7 (70.0%)	17 (68.0%)	2 (66.7%)	16 (41.0%)	42 (54.5%)
Side effect	1 (10.0%)	3 (12.0%)	1 (33.3%)	18 (46.2%)	23 (29.9%)
Patient's request	1 (10.0%)	0	0	5 (12.8%)	6 (7.8%)
Extra-articular manifestation	1 (10.0%)	5 (20.0%)	0	0	6 (7.8%)

Table 2.

Drug survival of first TNFi

Drug survival of second TNFi

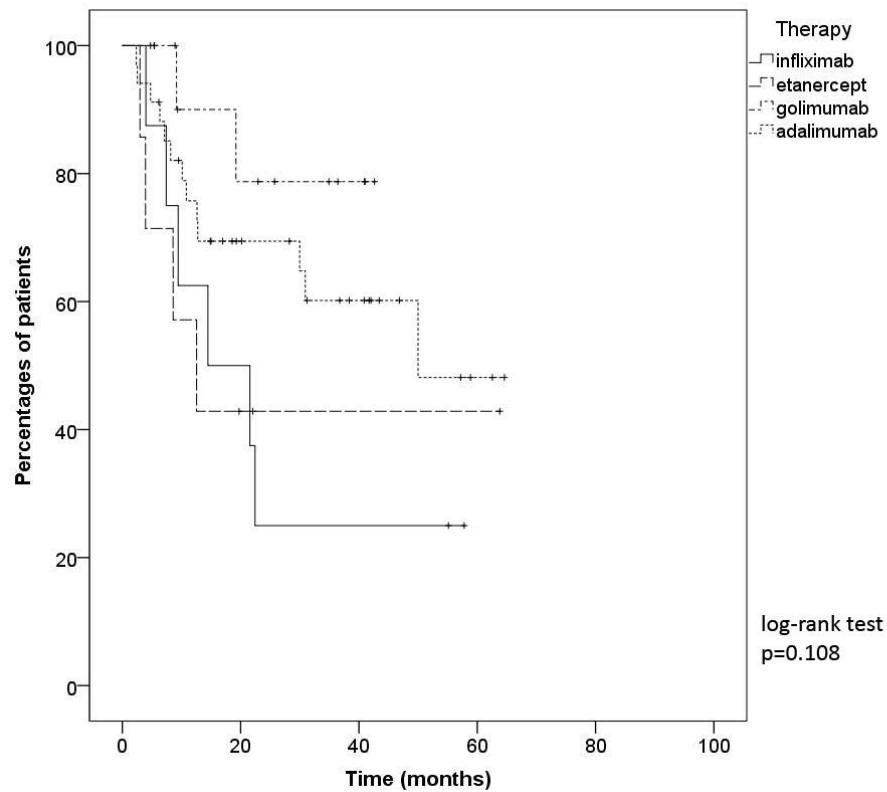
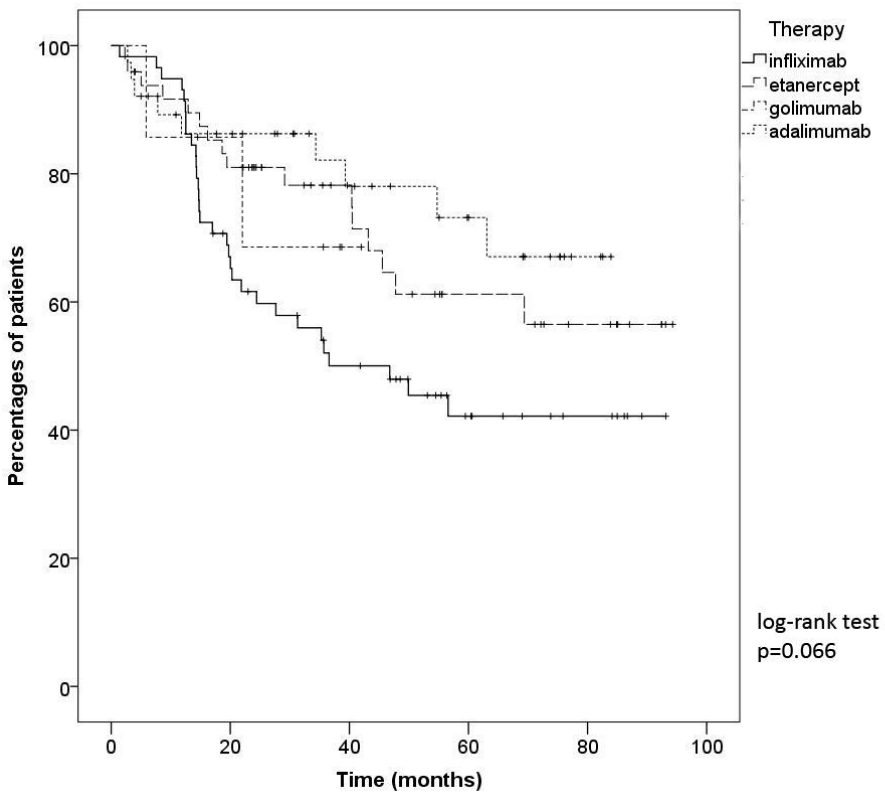


Figure 3.